

EXCITING CAREER OPPORTUNITY!

THE SOUTH DAKOTA LEGISLATIVE RESEARCH COUNCIL
IS RECRUITING FOR
CHIEF FISCAL AND PROGRAM ANALYST
\$92,770 - \$139,155 ANNUALLY

The Agency

The South Dakota Legislative Research Council (LRC) was established by the 1951 Legislature. All LRC staff positions are nonpartisan and at-will.

The LRC staff and their services are the backbone of the functions and activities of the South Dakota Legislature. Through the work of LRC staff, the Legislature is better able to operate and assert itself as an independent and effective branch of state government.

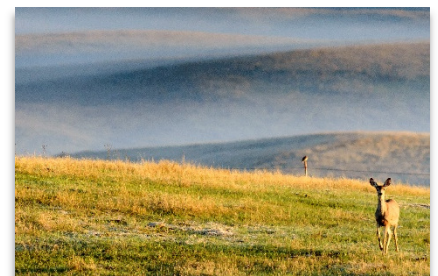
Services provided by the LRC include committee staffing, policy and legal research, drafting legislation, fiscal and budgetary analysis, information technology, administrative rules oversight, and program evaluations.



Pierre, South Dakota

Founded in 1880 on the Missouri River opposite Fort Pierre, Pierre (pronounced "Pier") is the geographic center of the state. Fort Pierre was named after Pierre Chouteau, Jr., an American fur trader of French origin. In addition to being the state capital, Pierre is the county seat of Hughes County.

Pierre has a population of 13,646 and a low cost of living and other favorable characteristics, such as 29% more college graduates, 26% higher median family income, 33% less violent crime over five years, and 7% higher public school ACT scores, and median owner-occupied home prices 16% below the U.S. average.



There are many outdoor and indoor recreational, cultural, and leisure activities for Pierre residents. The Oahe Family YMCA/Pierre Aquatic Center features a gym and an eight-lane, 25-yard indoor pool. Other pool features designed for

youth include a zero depth entrance, play equipment, a small slide, and many water spray devices. The 85-foot whitewater slide and one-meter diving board are also popular features.

Other area amenities include a seasonal outdoor pool, indoor skating venues, two 18-hole golf courses, and Hyde Stadium, which houses Pierre's American Legion Post 8 baseball team and the Pierre Trappers of the Expedition League, an eight-team, wooden bat summer league for college baseball players.

Pierre residents have access to year-round hunting, with a rich diversity of big and small game, and world-class fishing. The Pierre area's numerous lakes and ponds boast extraordinary freshwater fishing in every season. Abundant, well-managed populations of numerous species provide exciting fishing on hundreds of miles of shoreline on Lake Oahe and Lake Sharpe, which also offer unsurpassed boating opportunities. Smaller ponds and lakes dot the nearby prairies, and the Fort Pierre National Grassland offers excellent fishing from shore and small craft.

Compensation and Benefits

The Legislative Research Council offers an exceptional compensation and benefit program committed to employee well-being which includes:

- 10 paid holidays
- 15 days of vacation leave per year for new employees
- 14 days of sick leave per year
- Comp Time flexibility
- A generous employer-paid health insurance plan
- Employer paid \$25,000 basic life insurance with additional coverage available, including long and short-term disability plans, accidental death and dismemberment plans and long-term care insurance
- Best funded, most reliable and sustainable state defined-benefit retirement plan in the United States (the only state plan that is over 100% funded, as per Pew 2017 study)
- Flexible spending accounts (FSA)

Position Description

The Chief Fiscal & Program Analyst plans, organizes, and directs the fiscal analysis and program evaluation division of the LRC staff; supervises six Fiscal/Program Analysts; serves as the senior advisor to legislators and the LRC Director on fiscal matters; provides and coordinates staff support for the Joint Committee on Appropriations; drafts appropriation bills; coordinates program evaluations authorized by the Legislature's Executive Board; coordinates development of the LRC's statewide budget database with the LRC information technology division; participates as a member of the LRC senior staff management team; and performs other duties as assigned by the Director.



To Qualify

The ideal candidate would have a graduate degree in economics, statistics, mathematics, law, accounting, public policy, business or public administration, plus at least 10 years of experience in conducting fiscal analysis, program evaluations, or performance audits in a legislative setting, and some prior managerial or project management experience.

An acceptable candidate would have a bachelor's degree in economics, statistics, mathematics, law, accounting, public policy, business or public administration, or any closely related field, plus at least five years of experience in fiscal analysis, program evaluations, or performance audits.

While this position supervises staff who perform both fiscal analysis and program evaluations, no candidate is expected to have a background in both of these functions, and training will be provided in whichever area a candidate's background does not include.

Additional Information

Application Deadline: Monday, May 7, 2018

To apply for this position, please submit a resume, cover letter and any supporting documents to the Legislative Research Council:

E-Mail: Legis.Resume@sdlegislature.gov

Fax: 605-773-4576

Address:

Jason Hancock, Director
South Dakota Legislative Research Council
500 East Capitol Avenue
Pierre, SD 57501

