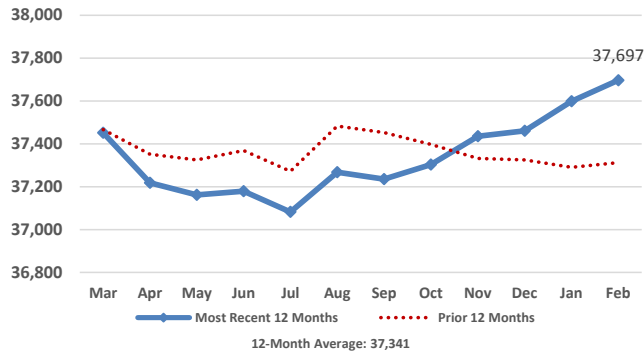


# Medical Services Data and Trends

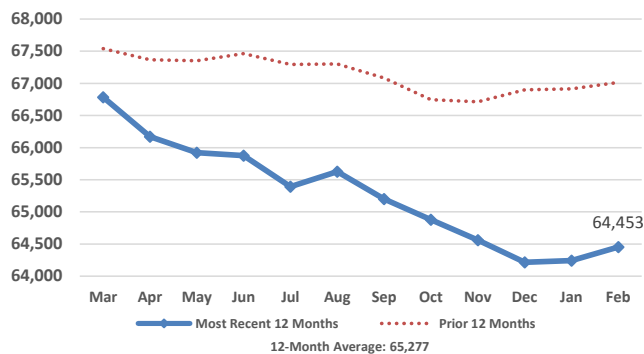
February 2018



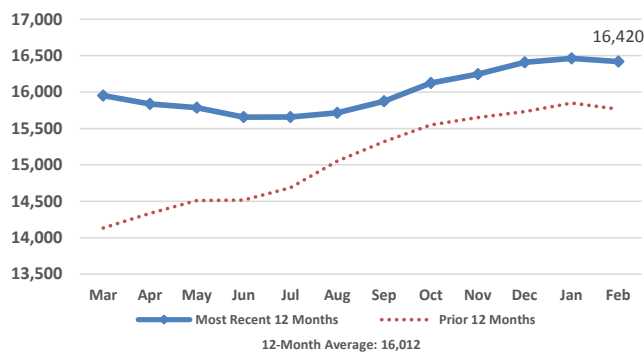
## Adult Medicaid Enrollment



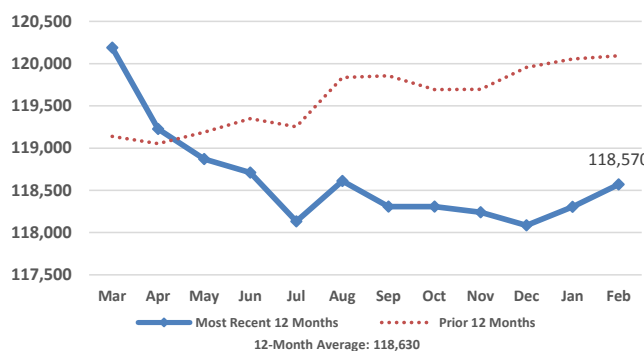
## Child Medicaid Enrollment



## CHIP Enrollment



## Total Medical Services Enrollment



## Monthly Enrollment Data

Eligibility Category	Enrollees	Monthly Change	Yearly Change
Aged/Blind Adults	7,241	(12)	183
Disabled Adults	16,546	(4)	213
Pregnant Women	1,031	(46)	(144)
Parents/Caretaker Relatives	12,879	160	133
Medicaid Children	64,453	209	(2,561)
CHIP Children	16,420	(43)	653
<b>Total Enrollees</b>	<b>118,570</b>	<b>264</b>	<b>(1,523)</b>

Children that moved from Medicaid to CHIP this month:

Children that moved from CHIP to Medicaid this month:

## Monthly Expenditure Data

	Medicaid	CHIP	Total
Enrollees	102,150	16,420	118,570
Recipients*	54,938	7,134	62,072
Recipients as % of Enrollees	54%	43%	52%
Expenditures**	\$72,625,090	\$2,632,801	\$75,257,891
Expenditures per Enrollee	\$711	\$160	\$635
Expenditures per Recipient	\$1,322	\$369	\$1,212

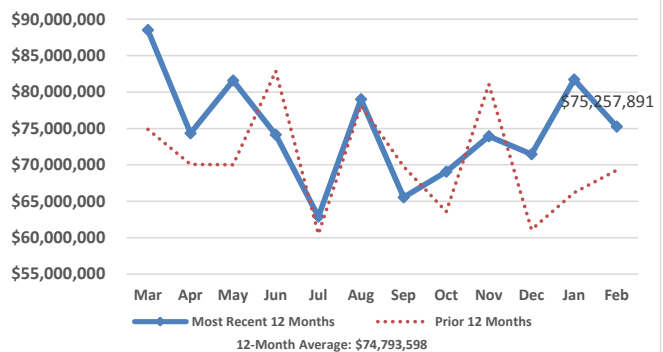
\*Recipient is an enrolled individual that had at least one medical service paid for during the month.

\*\* Does not include premiums for Medicare Part A, Part B, and Part D.

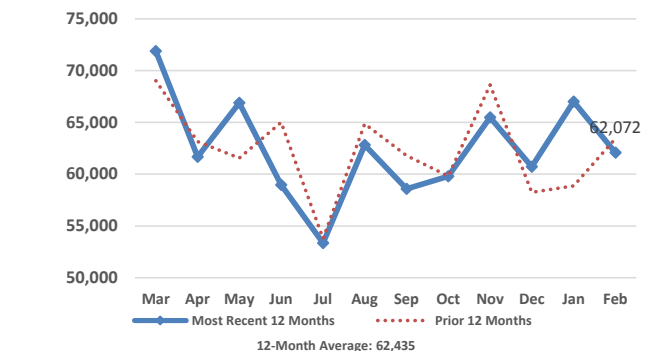
## Payments for Medicare Part A, B, & D Premiums

	Part A	Part B	Part D
Persons	1,346	17,778	12,367
Payment	\$547,662	\$2,381,031	\$1,821,252
Average Payment per Person	\$407	\$134	\$147

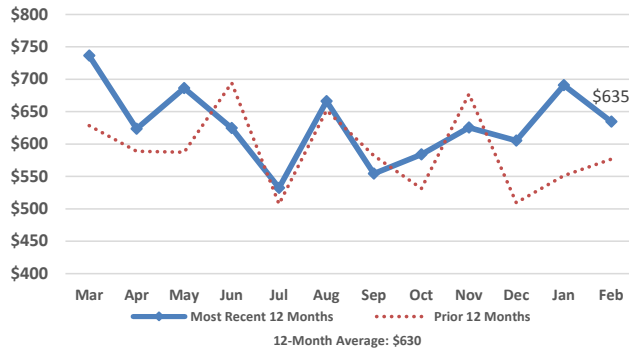
## Total Medical Services Expenditures



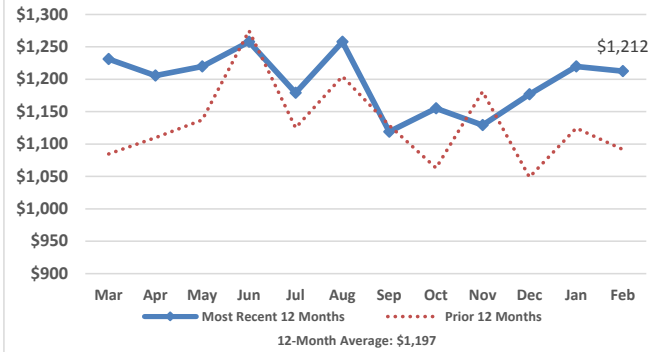
## Total Medical Services Recipients



### Total Expenditures per Enrollee



### Total Expenditures per Recipient



### Medicaid Budget

SFY	Enrollment	State	Federal	Total
2017 Actual	104,049	\$377,530,942	\$524,267,061	\$901,798,003
2018 Budget	106,173	\$391,069,891	\$609,462,158	\$1,000,532,049

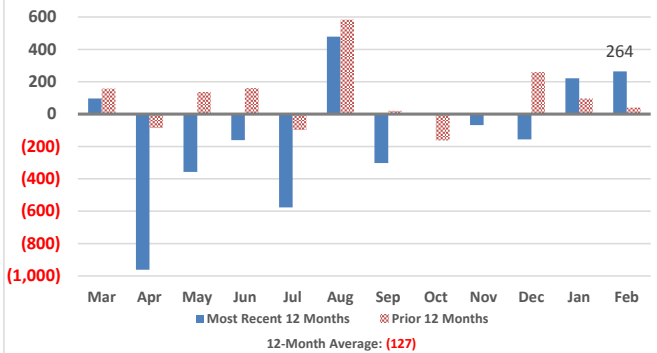
### CHIP Budget

SFY	Enrollment	State	Federal	Total
2017 Actual	15,570	\$2,700,989	\$27,441,048	\$30,142,037
2018 Budget	15,847	\$2,623,873	\$28,875,245	\$31,499,118

### Total Medical Services Budget

SFY	Enrollment	State	Federal	Total
2017 Actual	119,619	\$380,231,931	\$551,708,109	\$931,940,040
2018 Budget	122,020	\$393,693,764	\$638,337,403	\$1,032,031,167

### Change in Medical Services Enrollees



### Federal Medical Assistance Percentage

#### Regular FMAP

	SFY2016	SFY2017	SFY2018	SFY2019
Federal	51.61%	54.11%	55.24%	56.37%
State	48.39%	45.89%	44.76%	43.63%

#### CHIP FMAP

	SFY2016	SFY2017	SFY2018	SFY2019
Federal	83.39%	90.88%	91.67%	92.46%
State	16.61%	9.12%	8.33%	7.54%

### South Dakota Income Eligibility - Calendar Year 2018

	Parent/ Caretaker	Aged/Blind/ Disabled (Single)	Aged/Blind/ Disabled (Couple)	Pregnant Women	Child Medicaid	CHIP
%FPL:	57%	74%	83%	138%	182%	209%
1	\$6,920	\$8,820	X	\$16,753	\$22,095	\$25,373
2	\$9,382	X	\$13,236	\$22,715	\$29,957	\$34,401
3	\$11,845	X	X	\$28,676	\$37,820	\$43,430
4	\$14,307	X	X	\$34,638	\$45,682	\$52,459
5	\$16,769	X	X	\$40,600	\$53,544	\$61,488
6	\$19,232	X	X	\$46,561	\$61,407	\$70,517
7	\$21,694	X	X	\$52,523	\$69,269	\$79,545
8	\$24,157	X	X	\$58,484	\$77,132	\$88,574

### South Dakota Medical Services Expenditures and Enrollees

