

**Department of Corrections Performance Measures
Government Operations and Audit Committee
July 24, 2018**

Mission

The mission of the Department of Corrections is to protect the citizens of South Dakota by providing safe and secure facilities for juvenile and adult offenders committed to our custody by the courts, to provide effective community supervision to offenders upon their release and to utilize evidence-based practices to maximize opportunities for rehabilitation.

Vision

A national leader in corrections that enhances public safety by employing evidence based practices to maximize the rehabilitation of offenders.

Values

We value our staff as our greatest asset.

We value a safe environment for staff and offenders.

We value community support and collaboration.

We value public trust in the operation of our department.

We value the use of evidence based practices to maximize offender rehabilitation.

We value diversity and the respect for all individuals.

We value professionalism, teamwork and the highest standard of ethics.

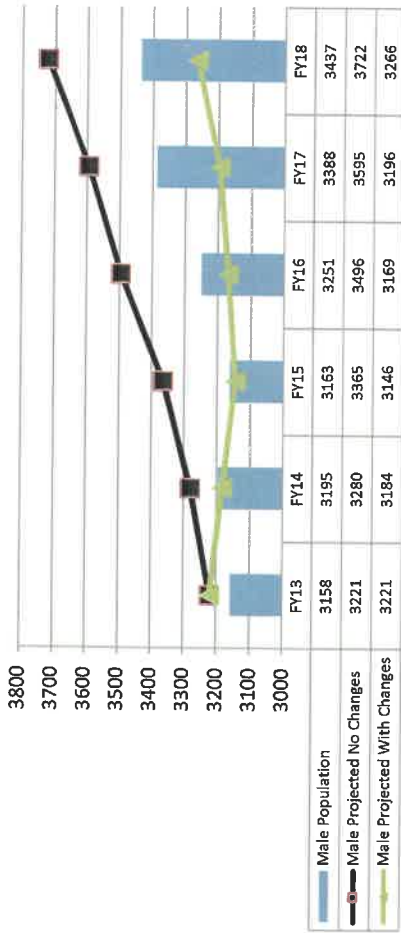
We value investment in our staff through training in sound correctional practice and through the provision of opportunities for development and career advancement.

Goals:

1. To protect the citizens of South Dakota by providing safe and secure facilities for offenders committed to our custody.
2. To provide effective community supervision to offenders upon their release.
3. To utilize evidence-based practices to maximize opportunities for rehabilitation.

Adult Performance Measures

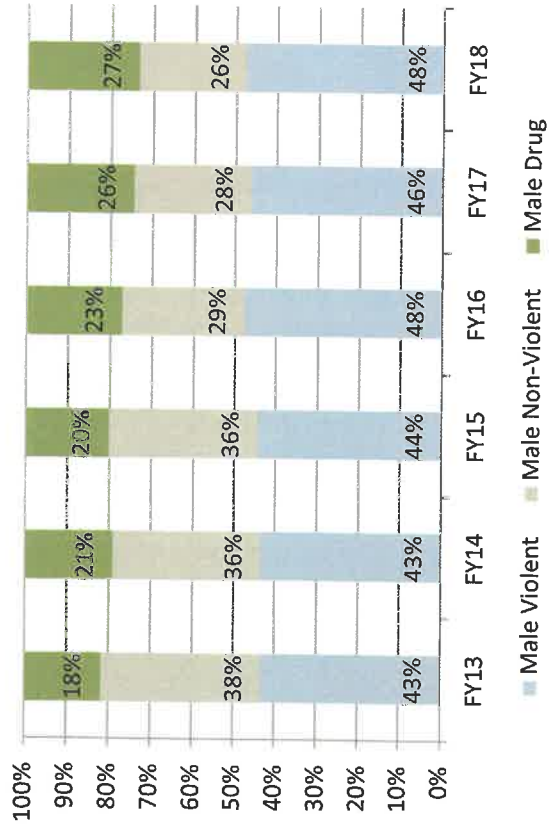
Male End Of Year Prison Population



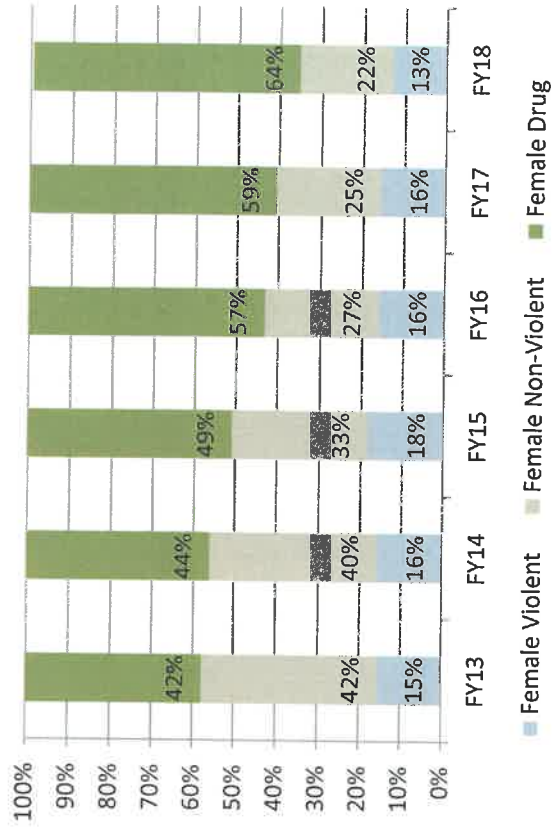
Female End Of Year Prison Population



Male Prison Composition

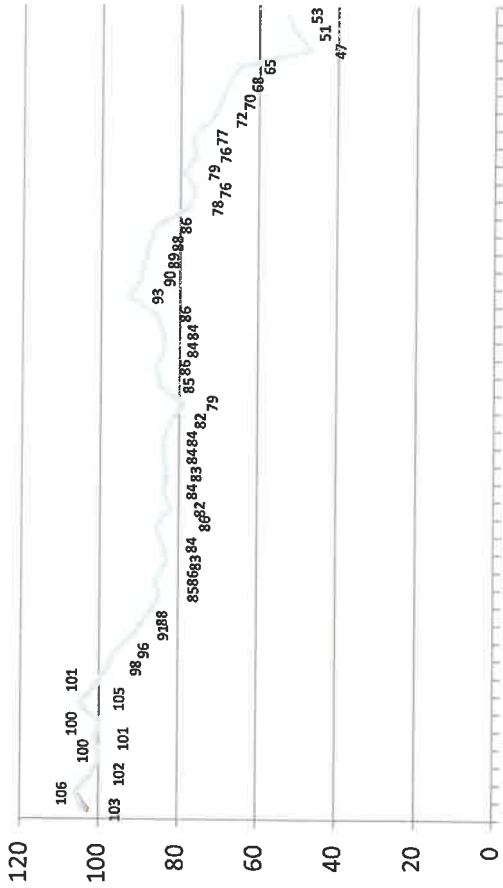


Female Prison Composition



Adult Performance Measures

Restrictive Housing Population, September 2014 to June 2018

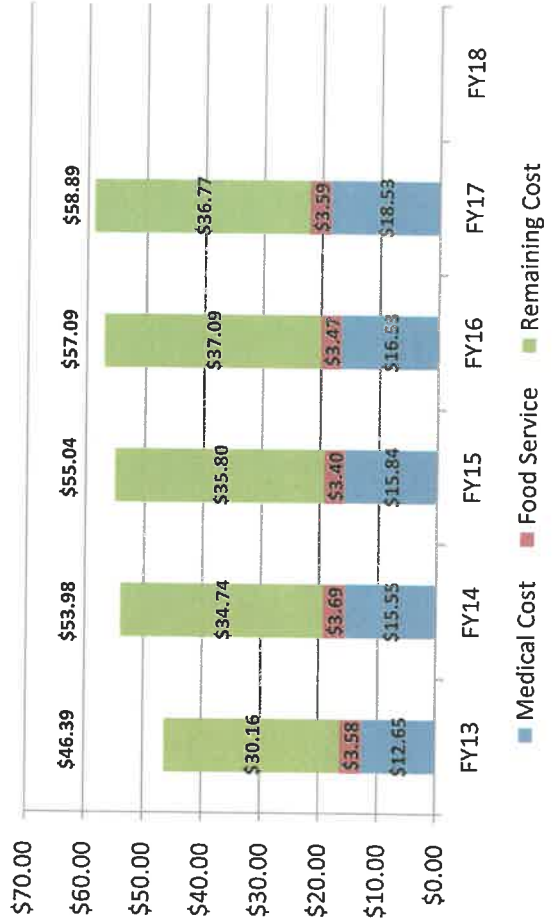


Safety Measure Rates

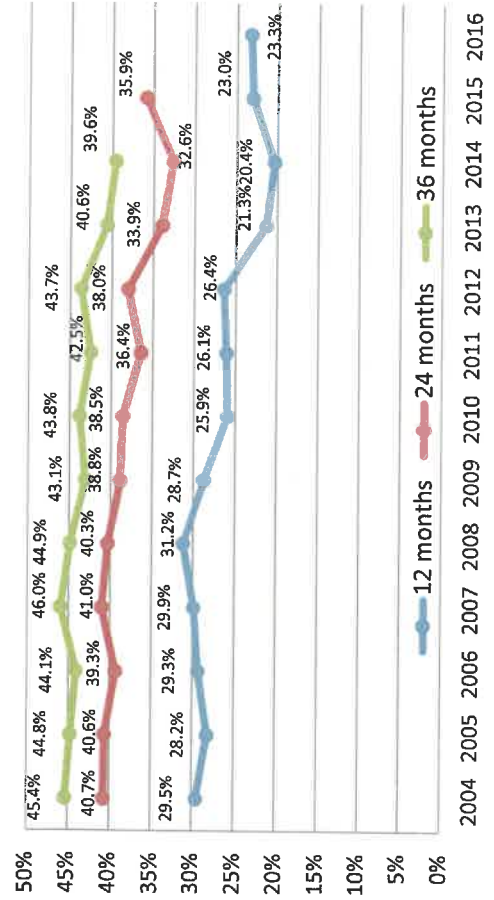


*Rates per 100,000

Adult Institutional Financial Costs Per Day

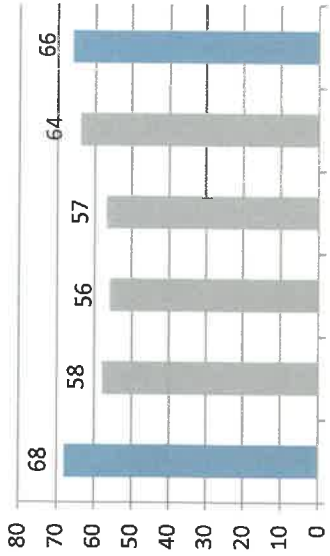


Recidivism

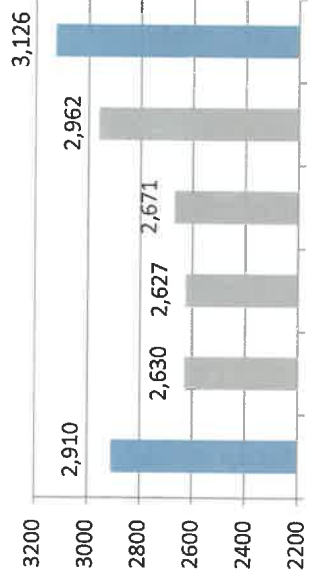


Parole Performance Measures

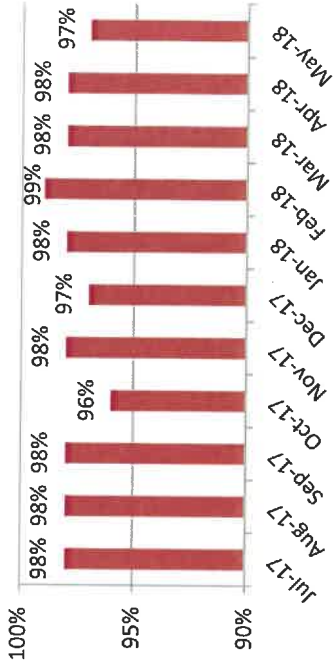
Average End Of Year Agent Caseload



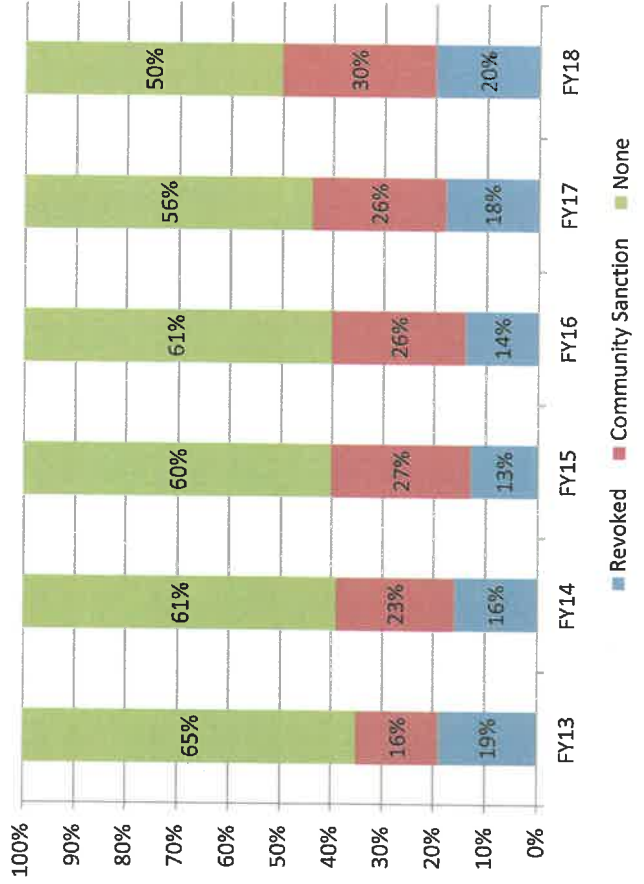
Parole End Of Year Population



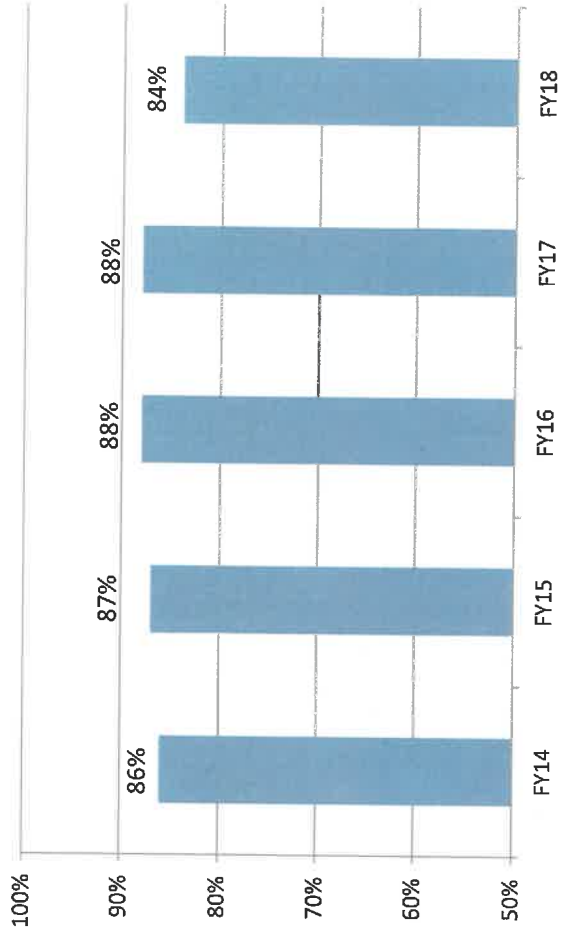
Parole Contact Standards



Graduated Sanctions - Parole

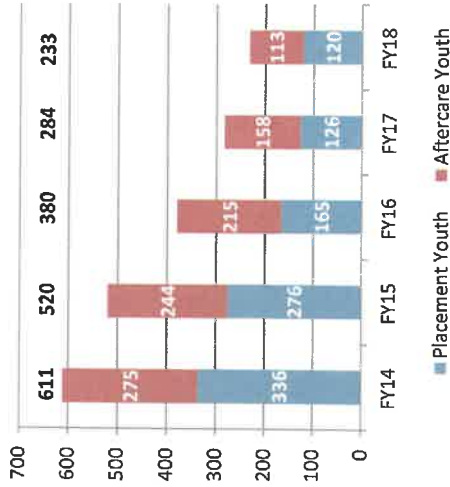


Percentage Of Eligible Parolees Awarded Credits

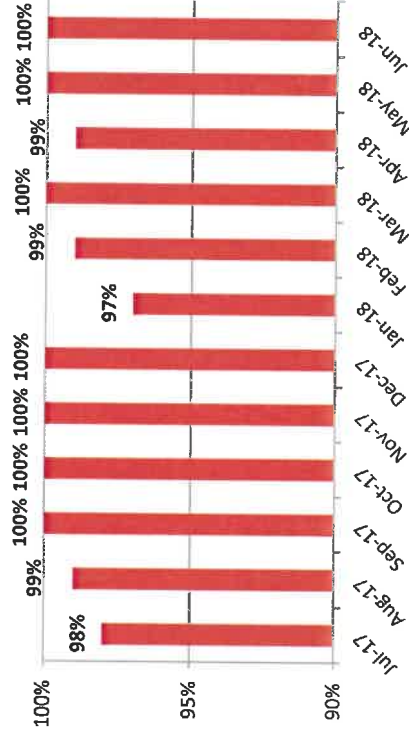


Juvenile Performance Measures

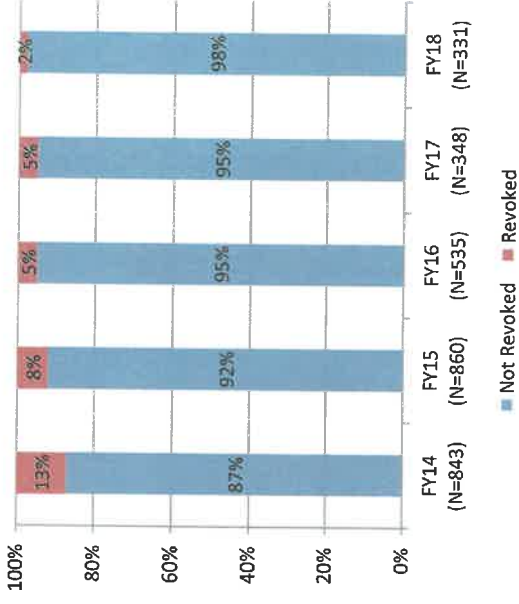
Youth Under DOC Jurisdiction



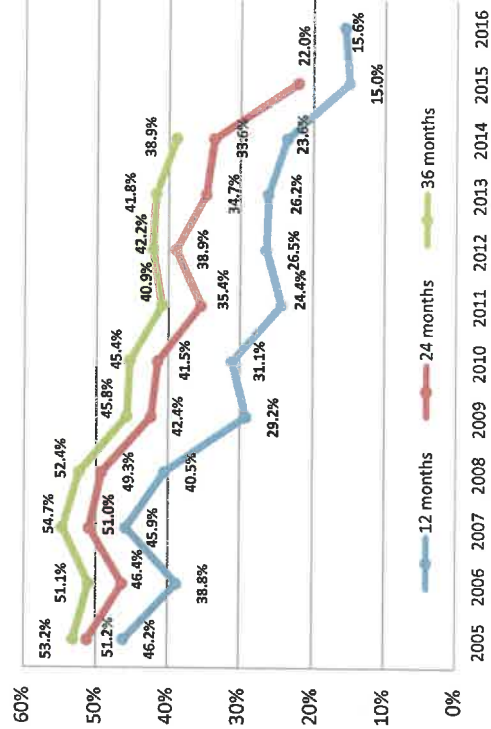
Contact Standards Overall Compliance



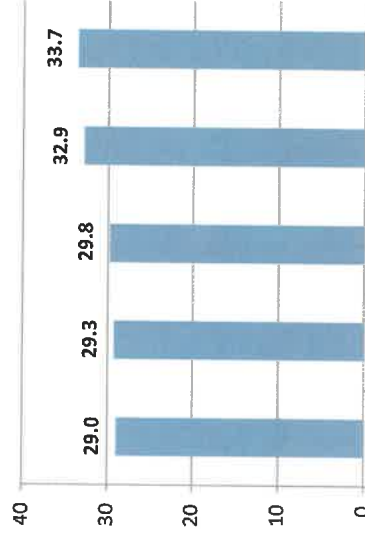
Aftercare Revocations



Total Recidivists from 2005-2016



Average Length of Commitment for Youth Discharged from DOC (Months)



Average Length of Stay in Residential Placement (Months)

