

# Statistical Comparison

The Eighty-Sixth Legislature

Spring 2011

Prepared By  
South Dakota Legislative Research Council

## ***FOREWORD***

Each year the Legislative Research Council receives information requests for miscellaneous facts and figures regarding the Legislature and its committees. This document compiles some of those miscellaneous facts and figures for the Eighty-sixth Legislature and compares them with previous Legislatures.

If anyone has any suggestions on additional information that might be included in this document, please forward your comments to the Legislative Research Council.

David Ortbahn and Marjorie Pirnat of the Legislative Research Council staff compiled and organized the data for this document.

# TABLE OF CONTENTS

## Page

### **2010 ELECTION RESULTS**

<b>THE 2010 ELECTION RESULTS.....</b>	<b>1</b>
Graph 1 Political Control of Senate, 1961-2011 .....	3
Graph 2 Political Control of House, 1961-2011 .....	3
Graph 3 Margins of Victory, Legislative Campaigns .....	4
Graph 4 Margins of Victory, Campaigns for Senate .....	4
Graph 5 Margins of Victory, Campaigns for House .....	5
Table A Legislative Turnover, 2000-2010 .....	6
Table B Number of Terms Served by Incumbent Legislators Not Returning to Legislature, 2001-2011 .....	7
Table C Political Control of South Dakota Governorship and Legislature, 1901-2011 .....	8

### **THE EIGHTY-SIXTH LEGISLATURE**

<b>THE EIGHTY-SIXTH LEGISLATURE.....</b>	<b>9</b>
<b>AGE.....</b>	<b>9</b>
Graph 6 Age of Legislators .....	9
Graph 7 Age of Senators .....	10
Graph 8 Age of Representatives .....	10
<b>GENDER.....</b>	<b>11</b>
Graph 9 Senators' Gender .....	11
Graph 10 Representatives' Gender .....	11
Table D Number of Women Legislators 1923-2011 .....	12
<b>EDUCATION.....</b>	<b>13</b>
Graph 11 Education of Legislators 2011-2012 .....	13
Graph 12 Education of Legislators .....	13
Graph 13 Education of Senators .....	14
Graph 14 Education of Representatives.....	14
<b>OCCUPATION .....</b>	<b>15</b>
Graph 15 Occupational Makeup of Senate.....	15
Graph 16 Occupational Makeup of House.....	16
<b>TENURE .....</b>	<b>16</b>
Graph 17 Legislator Tenure, All Legislators .....	17
Table E Prior Legislative Service of Senate Members .....	18
Graph 18 Legislator Tenure, in Senate .....	18
Table F Prior Legislative Service of House Members .....	19
Graph 19 Legislator Tenure, in House of Representatives.....	19

<b>PUBLIC SERVICE .....</b>	<b>20</b>
Graph 20 Other Public Offices Held, All Legislators .....	20
<b>LEGISLATIVE LEADERSHIP .....</b>	<b>21</b>

## ***LEGISLATIVE COMMITTEES***

<b>THE LEGISLATIVE COMMITTEES .....</b>	<b>23</b>
Table G Total Number of Bills and Resolutions Referred to Committees for Years 2002-2011 .....	24
Graph 21 2011 Distribution of Bills to Senate Committees .....	26
Graph 22 2011 Senate Committee Workload.....	26
Graph 23 2011 Distribution of Bills to House Committees .....	27
Graph 24 2011 House Committee Workload.....	27
Table H Number of Standing Legislative Committees each Session for Years 1891-2011 .....	28
Graph 25 Senate Committees - Number each Legislative Session .....	29
Graph 26 House Committees - Number each Legislative Session .....	29

## ***DISPOSITION OF BILLS AND RESOLUTIONS***

<b>2011 DISPOSITION OF BILLS AND RESOLUTIONS .....</b>	<b>31</b>
Table I Disposition of Senate Bills, 2011 .....	33
Graph 27 Disposition of Senate Bills, 2011 .....	33
Table J Disposition of House Bills, 2011 .....	34
Graph 28 Disposition of House Bills, 2011 .....	34
Graph 29 Disposition of Senate Bills, 2002-2011 .....	35
Graph 30 Disposition of House Bills, 2002-2011 .....	35
Table K Disposition of Senate Bills for Years 1890-2011 .....	36
Table L Disposition of House Bills for Years 1890-2011 .....	38
Graph 31 Disposition of Legislative Bills, 2002-2011 .....	40
Graph 32 Vetoes - 1982-2011 .....	40
Graph 33 Senate Joint Resolutions Introduced, 1982-2011 .....	41
Graph 34 House Joint Resolutions Introduced, 1982-2011 .....	41
Table M Disposition of all Legislative Bills for Years 1890-2011 .....	42
Table N Bills Vetoed by the Governor for Years 1890-2011 .....	44
Table O Disposition of Joint Resolutions for Years 1909-2011 .....	46
Graph 35 Senate Concurrent Resolutions Introduced, 1982-2011 .....	48
Graph 36 House Concurrent Resolutions Introduced, 1982-2011 .....	48
Graph 37 Senate Commemorations Adopted, 1989-2011 .....	49
Graph 38 House Commemorations Adopted, 1989-2011 .....	49
Table P Disposition of Concurrent Resolutions for Years 1921-2011 .....	50
Table Q Disposition of Commemorations for Years 1989-2011 .....	51

## ***SPECIAL SESSIONS***

<b>SPECIAL SESSIONS .....</b>	<b>53</b>
Table R Disposition of Total Bills for all Special Sessions .....	53
Table S Disposition of Senate Bills for all Special Sessions.....	54
Table T Disposition of House Bills for all Special Sessions.....	54
Table U Disposition of Resolutions and Commemorations for all Special Sessions.....	55

## ***GENERAL APPROPRIATIONS ACT***

Graph	39	General Appropriations Act - Funds Appropriated (FY 1993 - FY 2012).....	57
Graph	40	General Appropriations Act - Funds Appropriated (FY 2003 - FY 2012).....	57
Table	V	General Appropriations Act - General Funds Appropriated (FY 1891 - FY 1967).....	58
Table	W	General Appropriations Act - Funds Appropriated (FY 1968 - FY 2012).....	59



## **2010 ELECTION RESULTS**

There were 30 general election contests for House seats and 24 general election contests for the Senate in 2010. There were also nine primary election contests for the House and five primary election contests for the Senate. This compares to 35 House general election contests and 34 Senate general election contests and 20 House primary election contests and 11 Senate primary election contests in 2008. Ten legislative districts had full Democratic and Republican slates for the House in the 2010 general election, 21 less than in 2008. Of the 22 unfilled slates for the House, five were missing two Democratic candidates, three were missing two Republican candidates, nine were missing one Democratic candidate and five were missing one Republican candidate. There were 11 Senate races unopposed -- three Democrats were unopposed and eight Republicans were unopposed.

In the 2010 general election, the voters of the state elected 29 Republicans and six Democrats to the Senate and 50 Republicans, 19 Democrats, and one Independent to the House of Representatives. However, one Democratic senator-elect switched parties before the 2011 Legislature making the total in the Senate 30 Republicans and five Democrats. In comparison to the 2010 Legislature, the election resulted in a gain of nine seats by the Republicans in the Senate and a gain of four seats by the Republicans in the House of Representatives. Table C reviews the political control of the governorship and the Legislature since 1901. Graphs 1 and 2 show the political control of the House of Representatives and the Senate since 1957.

Twenty-two of the representatives were elected by five percent or less of the general election vote. Only one senator had a narrow victory margin of less than five percent. Twenty-two senators were unopposed or had victory margins of more than 26 percent. The margins of victory for 2010 are compared with previous elections in Graphs 3 to 5, inclusive.

The election in 2010 resulted in a total of 10 legislators being defeated for reelection -- five representatives and five senators. Among those defeated, Representative Gerald Lange had 18 years of legislative service; Representative Quinten Burg had 10 years of legislative

service. The average legislative tenure of senators defeated in a reelection bid was 4.4 years. The average legislative tenure of representatives defeated in a reelection bid was 6.8 years.

There were 13 senators and 22 representatives who did not run for their previous positions. Four of these senators were term limited and eight representatives could not run for the House of Representatives because of term limits. Of this group, two senators ran for the House of Representatives and both were elected. Ten representatives ran for the Senate; and all were elected. The tenure of the senators not running for reelection was 9.7 years. The average tenure of the representatives not running for reelection was 6.4 years.

The result was a net loss of 33 legislators from the 2010 session for a legislative turnover rate of 31 percent. This data is compared with similar data from previous election years in Table A. Table B compares 2010 with other post-election years as to the amount of legislative experience lost from the previous legislative term.

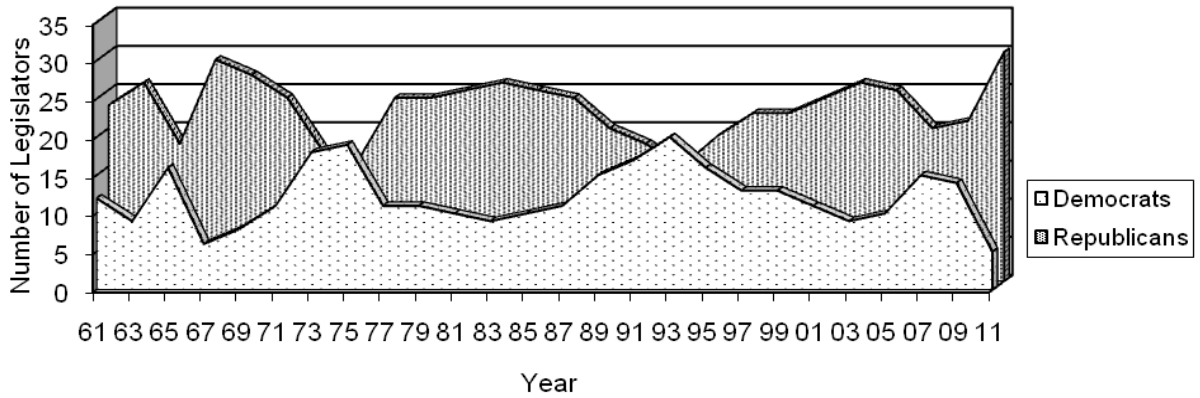
Those with at least four terms of legislative service not seeking reelection to the Senate were: Senator Tom Dempster, 8 years; Senator Dave Knudson, 8 years; Senator Gene Abdallah, 10 years; Senator Julie Bartling, 10 years; Senator Margaret Gillespie, 10 years; Senator Ben Nesselhuf, 10 years; Senator Jim Peterson, 10 years; Senator Gary Hanson, 12 years; Senator Scott Heidepriem, 12 years; and Senator Frank Kloucek, 20 years. Senators Abdallah, Dempster, Kloucek, and Knudson could not be reelected to the Senate because of term limits.

Those with at least four terms of legislative service not seeking reelection to the House of Representatives were: Representative Joni Cutler, 8 years; Representative Thomas Deadrick, 8 years; Representative Ed McLaughlin, 8 years; Representative Ryan Olson, 8 years; Representative Tim Rave, 8 years; Representative Tim Rounds, 8 years; Representative Bill Thompson, 8 years; Representative Bill Van Gerpen, 8 years; and Representative J.E. "Jim" Putnam, 23 years. Representatives Cutler, Deadrick, McLaughlin, Olson, Putnam, Rave, Rounds, and Thompson could not be reelected to the House of Representatives because of term limits.



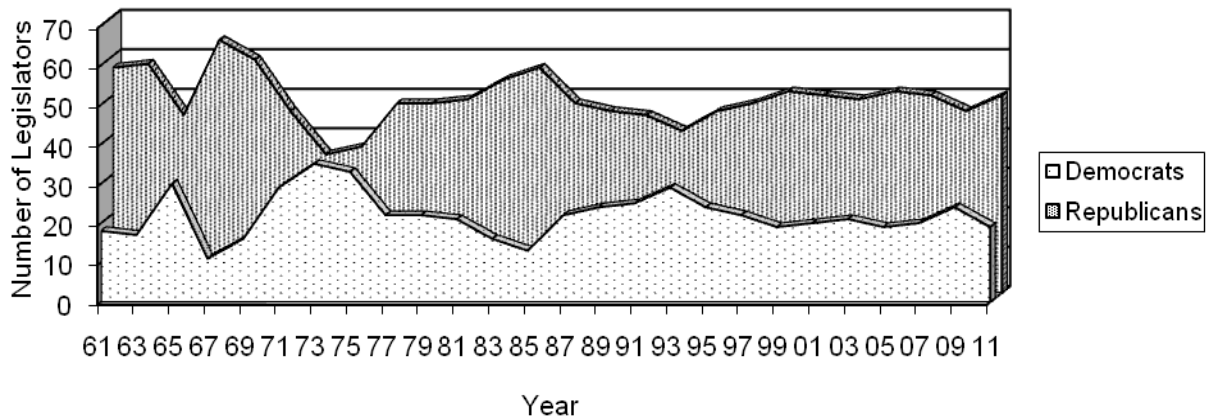
## GRAPH 1

### POLITICAL CONTROL OF SENATE 1961-2011



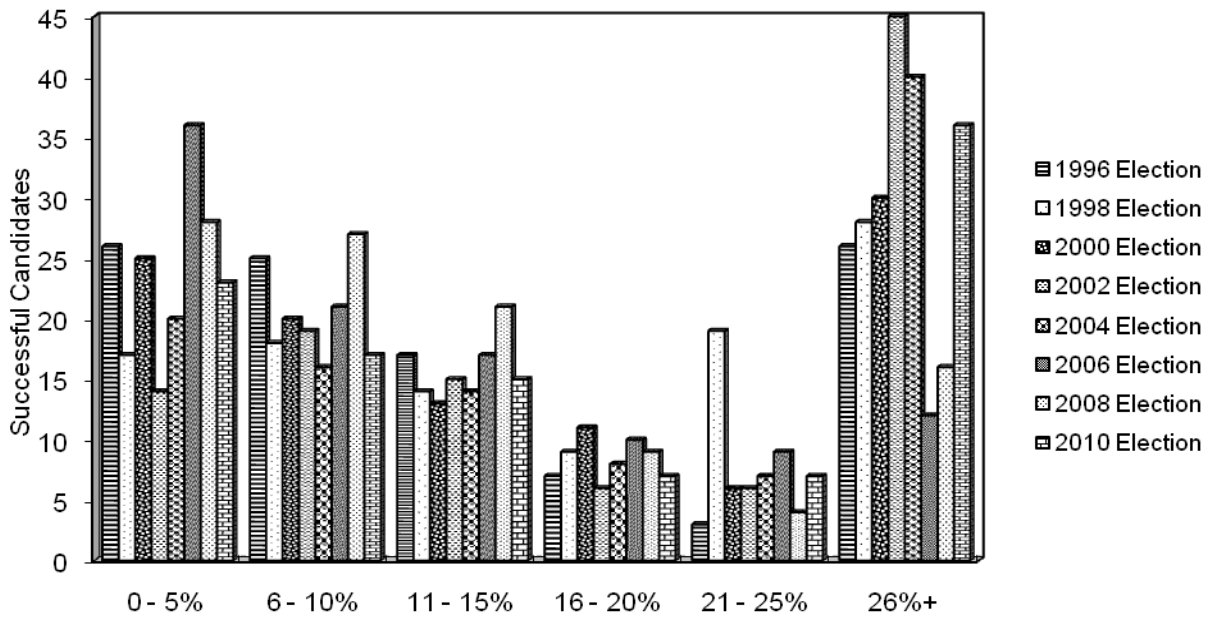
## GRAPH 2

### POLITICAL CONTROL OF HOUSE 1961-2011



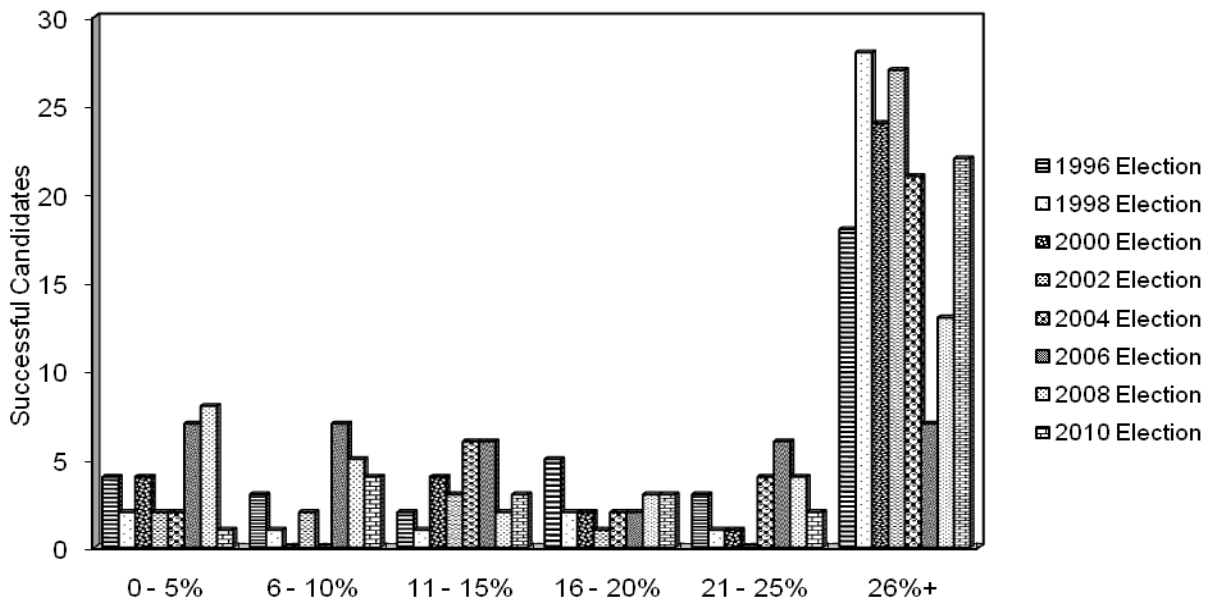
**GRAPH 3**

**MARGINS OF VICTORY**  
LEGISLATIVE CAMPAIGNS



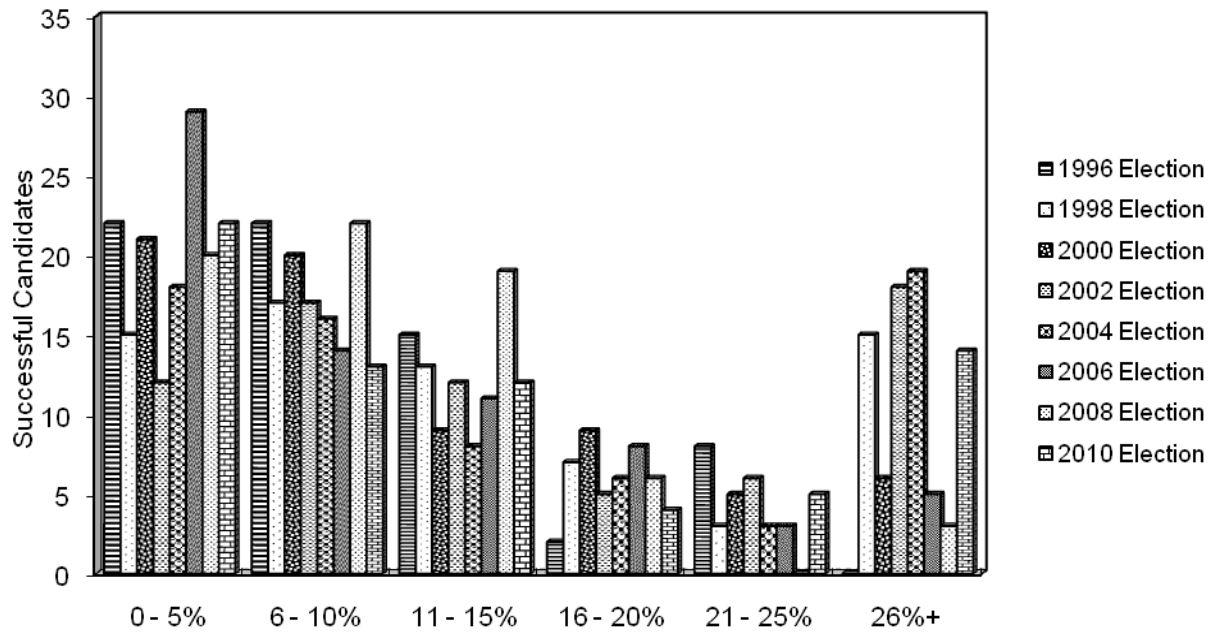
**GRAPH 4**

**MARGINS OF VICTORY**  
CAMPAIGNS FOR SENATE



## GRAPH 5

### MARGINS OF VICTORY CAMPAIGNS FOR HOUSE



**TABLE A**  
**LEGISLATIVE TURNOVER**

	<b>2000</b>	<b>2002</b>	<b>2004</b>	<b>2006</b>	<b>2008</b>	<b>2010</b>
<b><u>Senate</u></b>						
Number of senators not running for reelection	13	13	12	5	11	13
Average tenure in years of senators not running for reelection	13	9.6	11	11.6	11.5	9.7
Number of senators defeated in reelection bid	1	2	2	6	5	5
Average tenure in years of senators defeated in reelection bid	4	6	4	7.6	6	4.4
Total number of senators not returning	14	15	14	11	16	18
Average tenure of senators not returning	12.4	10	10	9.5	9.8	8.2
<b><u>House</u></b>						
Number of representatives not running for reelection to the House	29	20	19	15	32	22
Average tenure in years of representatives not running for reelection to the House	10.1	6.6	5.6	7.6	6.9	6.4
Number of representatives defeated in reelection bid	7	5	4	6	2	5
Average tenure in years of representatives defeated in reelection bid	2.6	3.2	2.3	5	11	6.8
Total number of representatives not returning to the House	36	25	23	21	34	27
Average tenure in years of representatives not returning to the House	8.6	5.9	5.0	6.9	7.1	6.5
<b><u>Total Legislature</u></b>						
Number of representatives elected to Senate	10	9	8	2	10	10
Number of senators elected to House	5	1	1	1	1	2
Total number of legislators not returning	35	30	28	29	39	33
<b>Percent of legislator turnover</b>	<b>33%</b>	<b>29%</b>	<b>27%</b>	<b>28%</b>	<b>37%</b>	<b>31%</b>

# TABLE B

## NUMBER OF TERMS SERVED BY INCUMBENT LEGISLATORS NOT RETURNING TO LEGISLATURE

### Senate

No. of Terms	2001	2003	2005	2007	2009	2011
1	0	1	1	0	3	1
2	1	1	0	1	1	4
3	0	2	2	3	0	2
4	4	5	5	1	2	3
5	4	3	1	3	3	5
6	2	0	2	1	3	2
7	0	0	1	0	1	0
8	0	2	1	2	2	0
9	0	0	0	0	1	0
10	1	0	0	0	0	1
11	0	0	1	0	0	0
12	1	1	0	0	0	0
13	0	0	0	0	0	0
14	0	0	0	0	0	0
15	<u>1</u>	<u>0</u>	<u>0</u>	<u>0</u>	<u>0</u>	<u>0</u>
	<b>14</b>	<b>15</b>	<b>14</b>	<b>11</b>	<b>16</b>	<b>18</b>

### House

No. of Terms	2001	2003	2005	2007	2009	2011
1	8	6	4	3	4	8
2	6	4	10	5	7	2
3	2	6	4	3	9	6
4	6	6	3	7	10	8
5	4	1	1	0	1	1
6	1	1	1	1	0	0
7	4	1	0	0	0	0
8	1	0	0	2	1	0
9	1	0	0	0	1	1
10	1	0	0	0	0	0
11	1	0	0	0	0	0
12	0	0	0	0	0	1
13	0	0	0	0	0	0
14	0	0	0	0	0	0
15	<u>0</u>	<u>0</u>	<u>0</u>	<u>0</u>	<u>1</u>	<u>0</u>
	<b>35</b>	<b>25</b>	<b>23</b>	<b>21</b>	<b>34</b>	<b>27</b>

**TABLE C**

**POLITICAL CONTROL OF S.D. GOVERNORSHIP & LEGISLATURE (1901-2011)**

GOVERNOR			SENATE			HOUSE		
YEAR	REP.	DEM.	REP.	DEM.	Others	REP.	DEM.	Others
1901	x		39	1	5	79	5	3
1903	x		41	3	1	76	6	5
1905	x		41	2	2	87	2	
1907	x		38	7		80	9	
1909	x		39	6		95	9	
1911	x		33	11	1	99	4	1
1913	x		33	11	1	88	14	1
1915	x		35	10		85	18	
1917	x		35	10		91	12	
1919	x		43	2		90	10	3
1921	x		44	1		94	4	5
1923	x		34	9	2	84	10	9
1925	x		34	10	1	85	11	7
1927		x	29	16		81	21	1
1929		x	33	12		83	20	
1931	x		31	14		79	24	
1933		x	16	29		33	70	
1935		x	14	31		40	63	
1937	x		22	23		66	37	
1939	x		30	5		62	13	
1941	x		31	4		65	10	
1943	x		31	4		69	6	
1945	x		35	0		72	3	
1947	x		35	0		71	4	
1949	x		27	8		64	11	
1951	x		29	6		66	9	
1953	x		35	0		73	2	
1955	x		29	6		57	18	
1957	x		18	17		48	27	
1959		x	15	20		43	32	
1961	x		23	12		57	18	
1963	x		26	9		58	17	
1965	x		18	16	1	45	30	
1967	x		29	6		64	11	
1969	x		27	8		59	16	
1971		x	24	11		46	29	
1973		x	17	18		35	35	
1975		x	16	19		37	33	
1977		x	24	11		48	22	
1979	x		24	11		48	22	
1981	x		25	10		49	21	
1983	x		26	9		54	16	
1985	x		25	10		57	13	
1987	x		24	11		48	22	
1988	x		25	10		48	22	
1989	x		20	15		46	24	
1991	x		18	17		45	25	
1993	x		15	20		42	28	
1995	x		19	16		46	24	
1997	x		22	13		48	22	
1999	x		22	13		51	19	
2001	x		24	11		50	20	
2003	x		26	9		49	21	
2005	x		25	10		51	19	
2007	x		20	15		50	20	
2009	x		21	14		46	24	
2011	x		30	5		50	19	1

# THE EIGHTY-SIXTH LEGISLATURE

## AGE

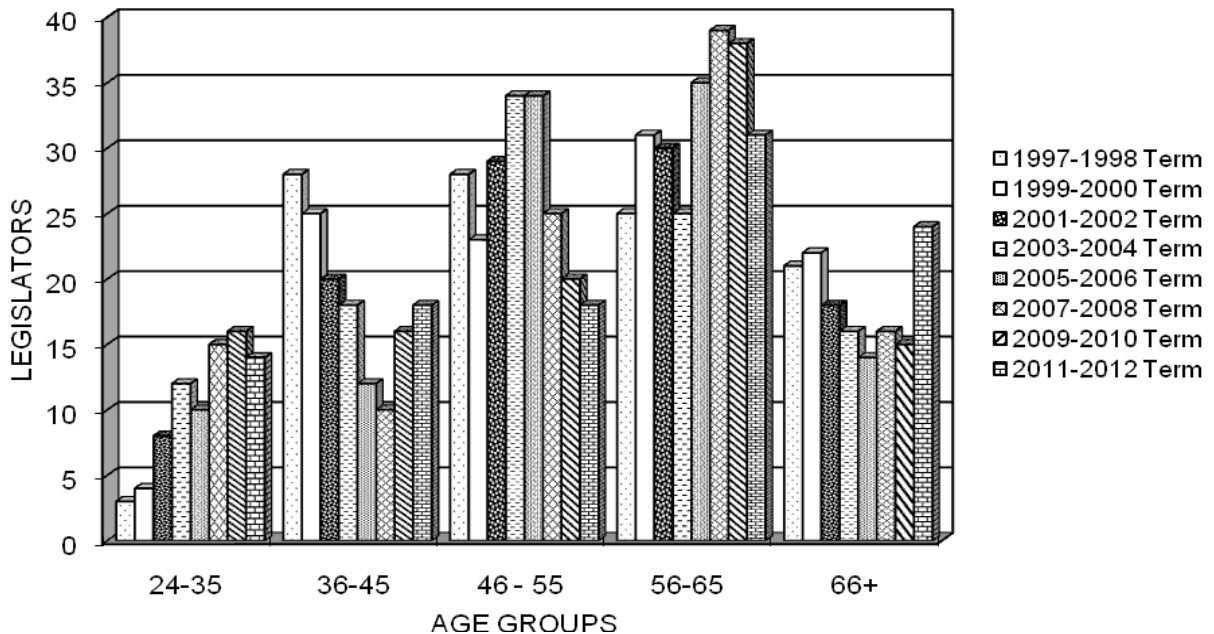
The age of legislators serving in the Eighty-sixth Legislature was slightly older than those legislators serving in the 2009-2010 legislative term. In 2011, 14 legislators (13.3%) were between twenty-four and thirty-five years of age; 18 legislators (17.1%) were thirty-six to forty-five; 18 legislators (17.1%) were forty-six to fifty-five; 31 legislators (29.5%) were fifty-six to sixty-five; and 24 legislators (22.9%) were sixty-six years of age or older.

By comparison, 16 legislators of the Eighty-fourth Legislature were between twenty-four and thirty-five years of age; 16 legislators were thirty-six to forty-five; 20 legislators were forty-six to fifty-five; 38 legislators were fifty-six to sixty-five; and 15 legislators were sixty-six years of age or older.

The Eighty-sixth Legislature is compared to previous legislative terms in Graphs 6 to 8.

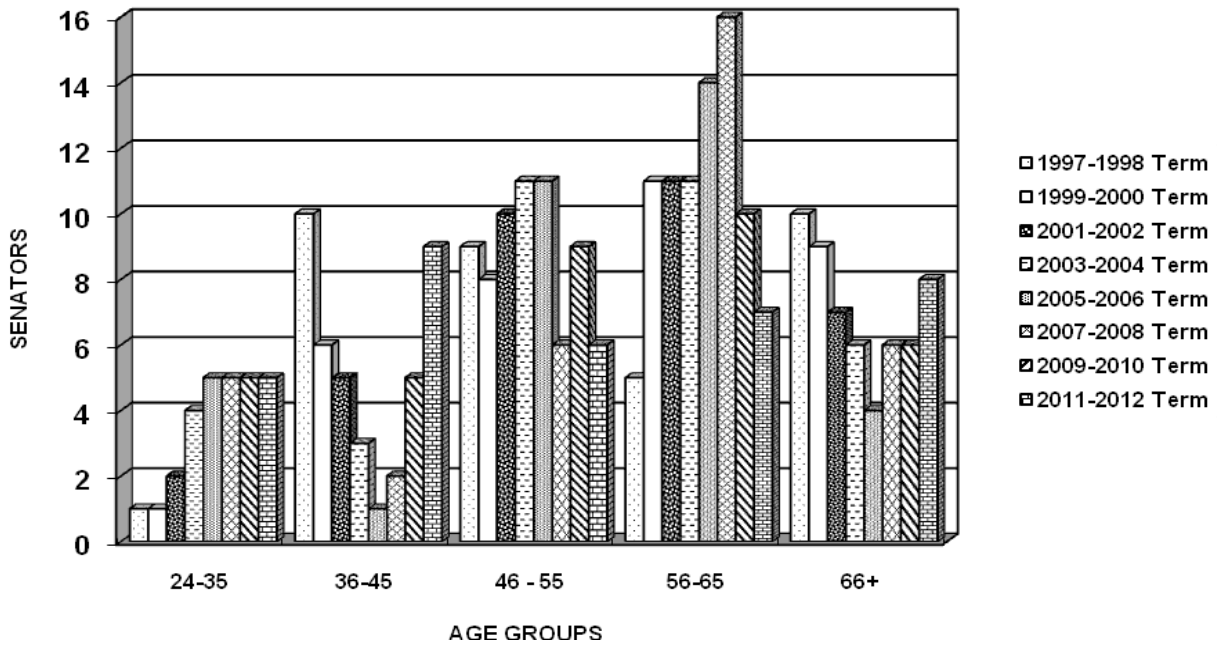
**GRAPH 6**

### AGE OF LEGISLATORS



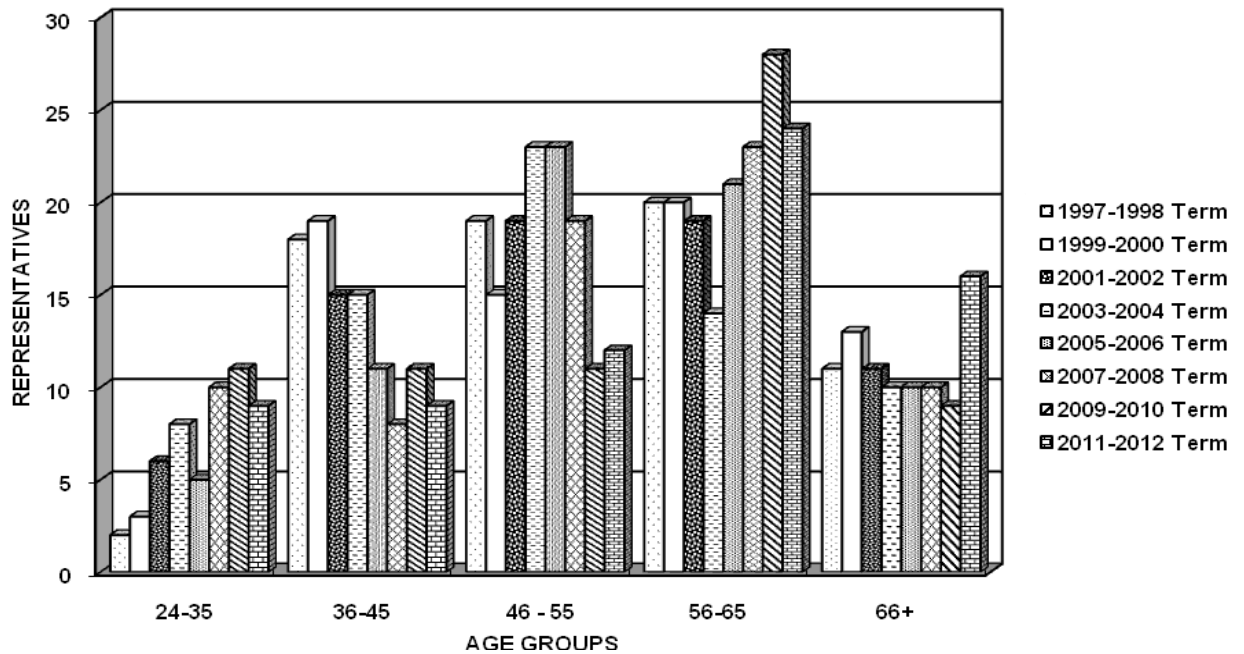
**GRAPH 7**

**AGE OF SENATORS**



**GRAPH 8**

**AGE OF REPRESENTATIVES**



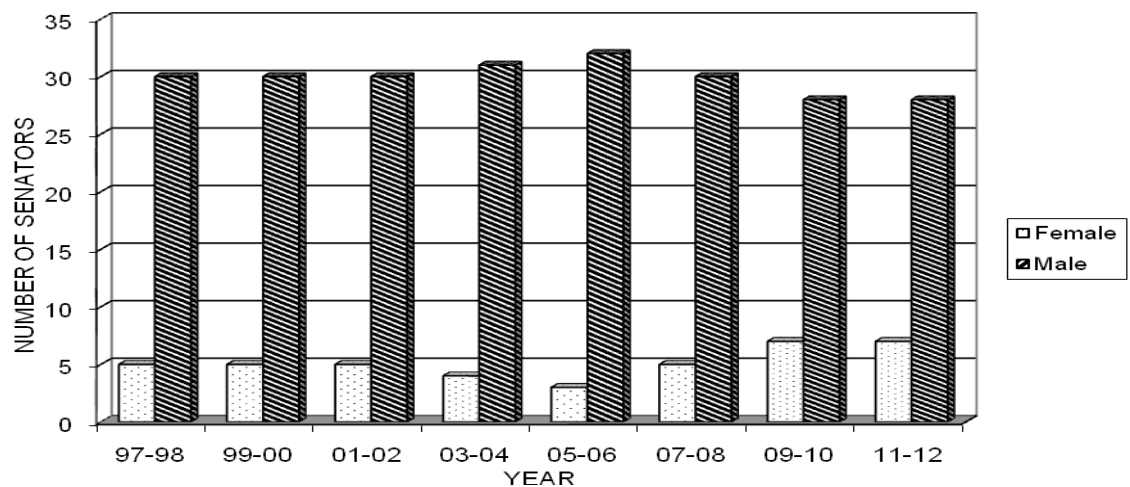


## GENDER

Twenty-one women were elected to serve in the 2011-2012 legislative term. This was the same number of women that had served in the 2010 Legislature. The 14 women representatives and seven women senators make up 20.0 percent of the total Legislature. Across the United States in 2011, 23.4 percent of the state lawmakers were women. Table D shows the number of women that have served in the Legislature since 1923.

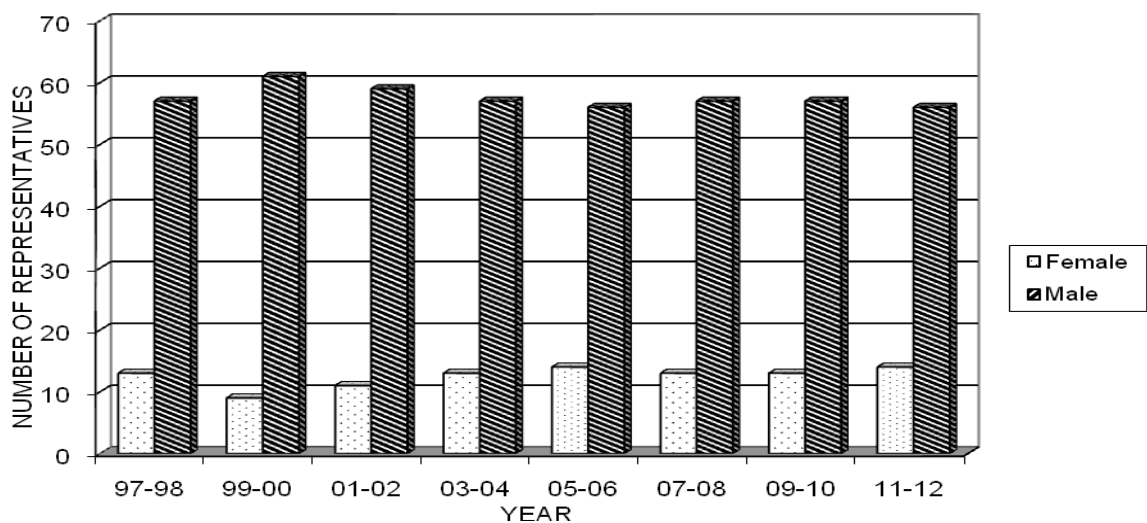
**GRAPH 9**

**SENATORS' GENDER**



**GRAPH 10**

**REPRESENTATIVES' GENDER**



**TABLE D**  
**NUMBER OF WOMEN LEGISLATORS**

<b>Year</b>	<b>House</b>	<b>Senate</b>
1923	1	0
1925	4	0
1927	1	0
1929	0	0
1931	0	0
1933	1	0
1935	0	0
1937	0	1
1939	1	0
1941	0	0
1943	0	0
1945	0	0
1947	0	0
1949	0	0
1951	1	0
1953	3	0
1955	2	0
1957	1	0
1959	2	0
1961	3	0
1963	2	0
1964	2	0
1965	3	0
1967-68	2	0
1969-70	2	0
1971-72	3	0
1973-74	4	1
1975-76	7	5
1977-78	8	2
1979-80	6	3
1981-82	8	3
1983-84	12	3
1985-86	11	4
1987	16	5
1988	17	5
1989	13	8
1990	13	7
1991-92	15	11
1993-94	14	7
1995	14	5
1996	14	6
1997-98	13	5
1999	9	5
2000	10	5
2001	11	5
2002	11	6
2003-04	13	4
2005-06	14	3
2007-08	13	5
2009	13	7
2010	14	7
2011	14	7

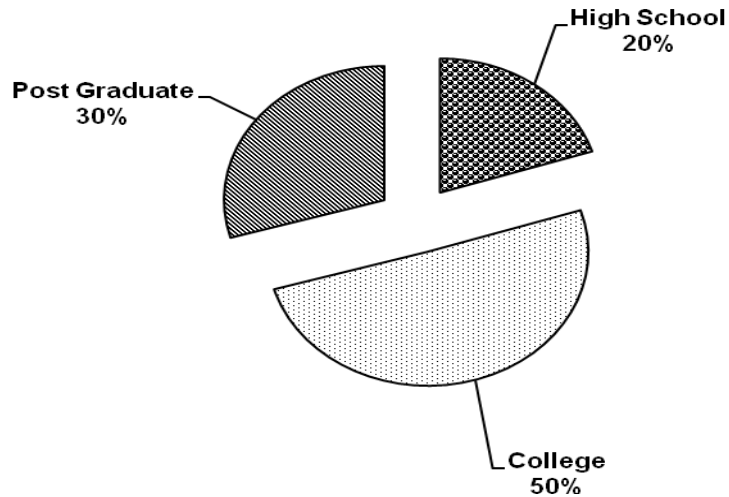
**NOTE:** First woman legislator: Representative Gladys Pyle (Beadle) (1923)  
First woman senator: Senator Jesse Saunders (Pennington) (1937)

## **EDUCATION**

The educational background of the Eighty-sixth Legislature is displayed and compared to previous legislative terms in the following graphs.

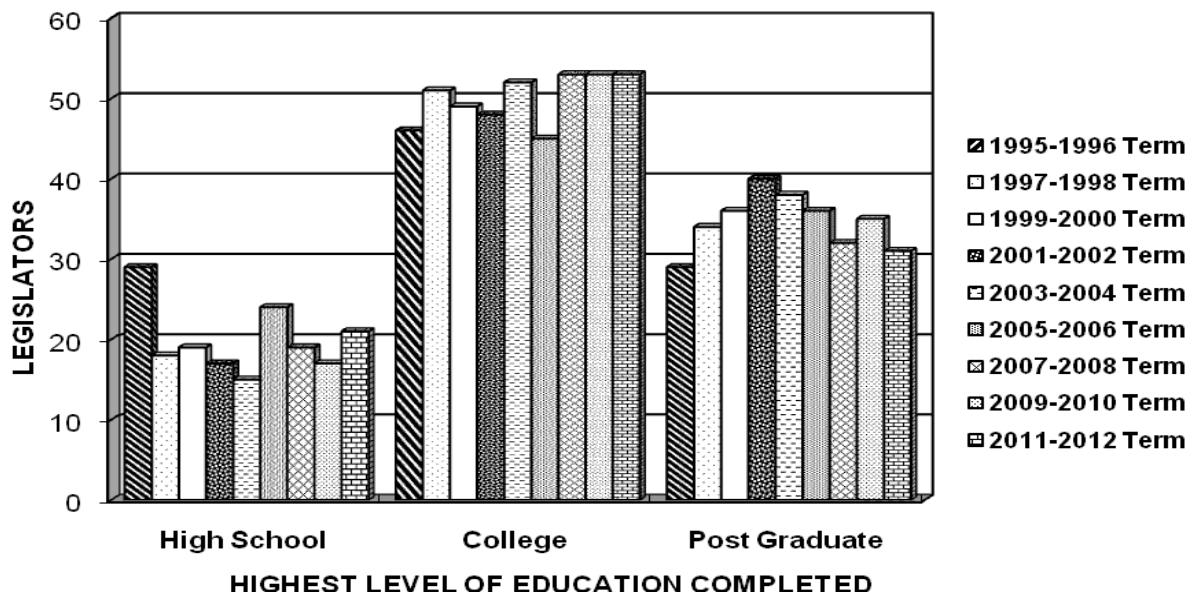
**GRAPH 11**

**EDUCATION OF LEGISLATORS  
2011-2012 TERM**



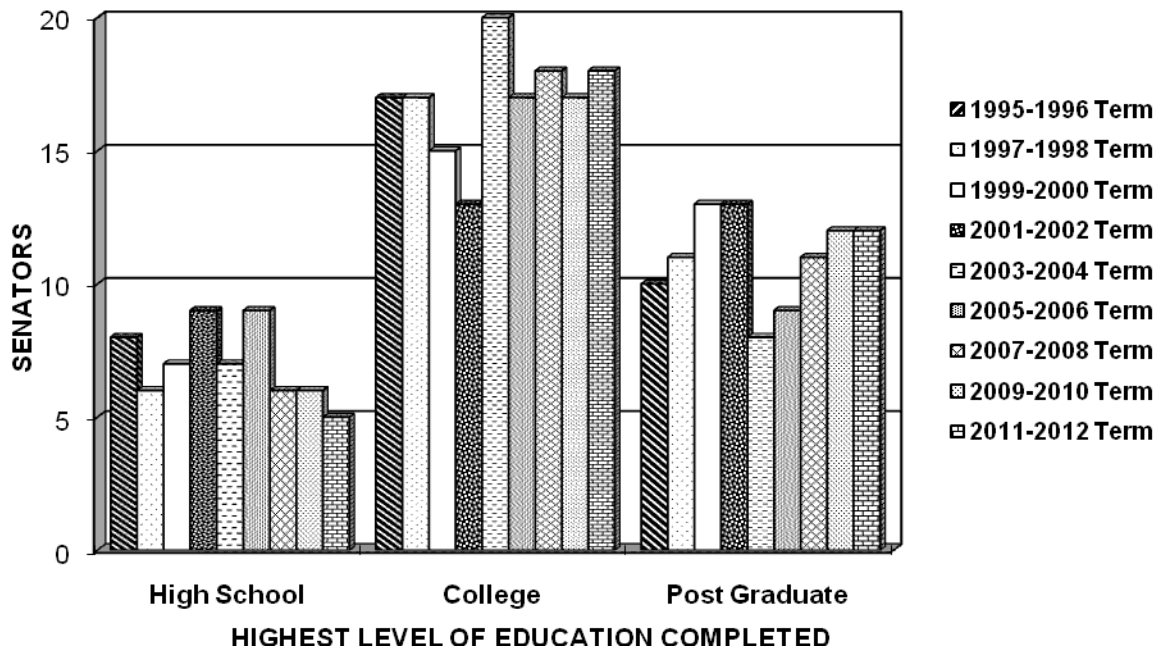
**GRAPH 12**

**EDUCATION OF LEGISLATORS**



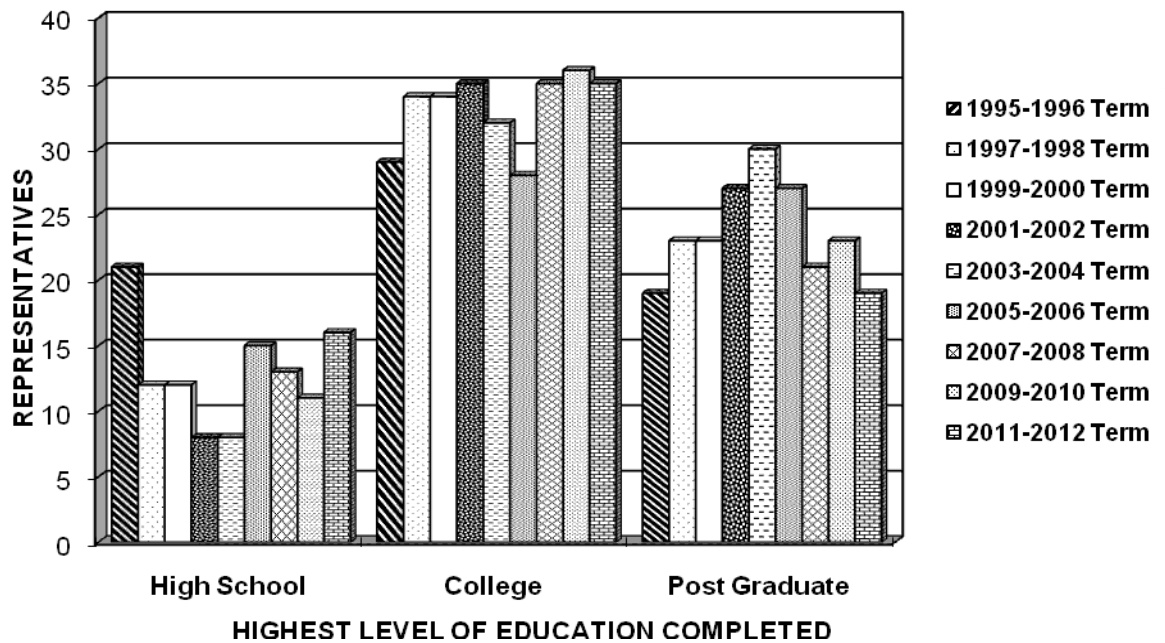
**GRAPH 13**

**EDUCATION OF SENATORS**



**GRAPH 14**

**EDUCATION OF REPRESENTATIVES**

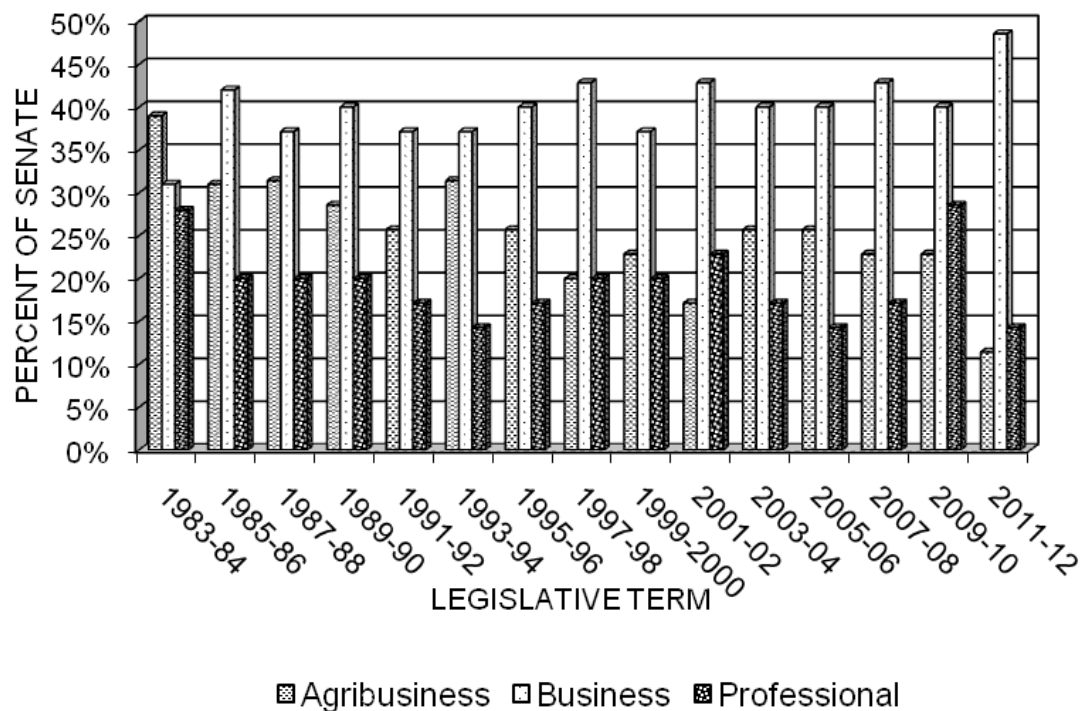


## OCCUPATION

Four senators in the 2011 Senate (11%) were engaged in farming, ranching, or other form of agribusiness. Seventeen (49%) of the senators were engaged in business and five (14%) of the senators were engaged in professions. Six of the senators (17%) were retired or semi-retired from their occupations. This occupational data is compared with previous years in Graph 15.

**GRAPH 15**

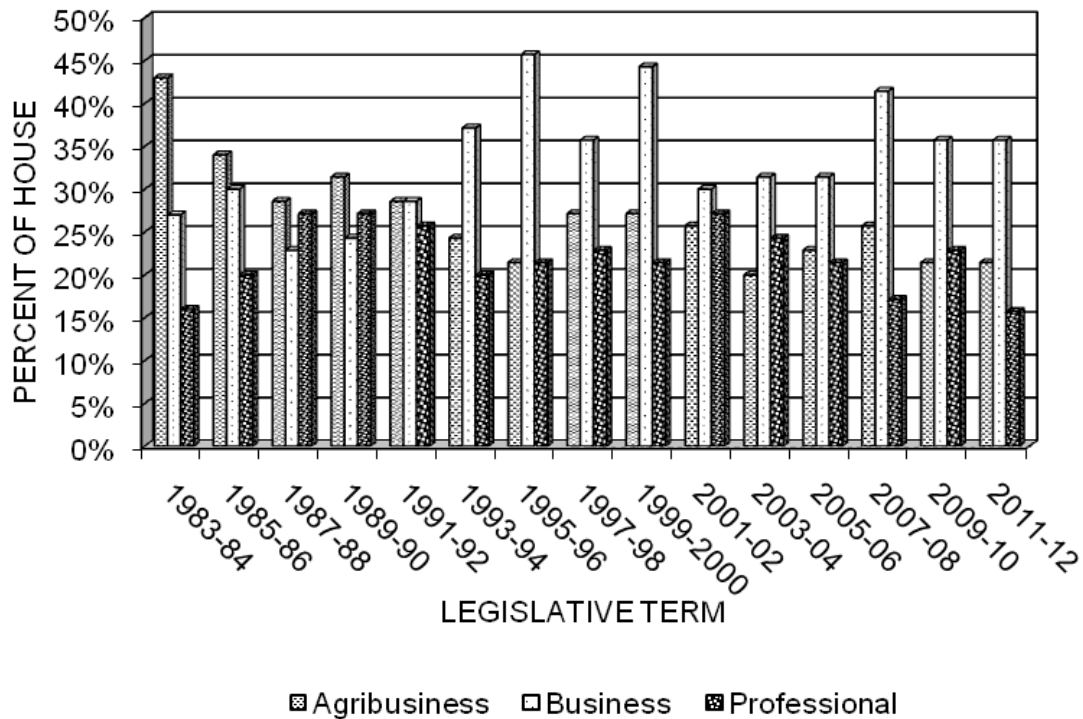
### **OCCUPATIONAL MAKEUP OF SENATE**



Twenty-five representatives in the 2011 House of Representatives (36%) were engaged in business. Fifteen of the representatives (21%) were farmers, ranchers, or otherwise involved in agribusiness. Eleven of the representatives (16%) were engaged in professions. Thirteen of the House members (19%) were retired or semi-retired from their occupations. The occupational data is compared with previous years in Graph 16.

**GRAPH 16**

**OCCUPATIONAL MAKEUP  
OF HOUSE**



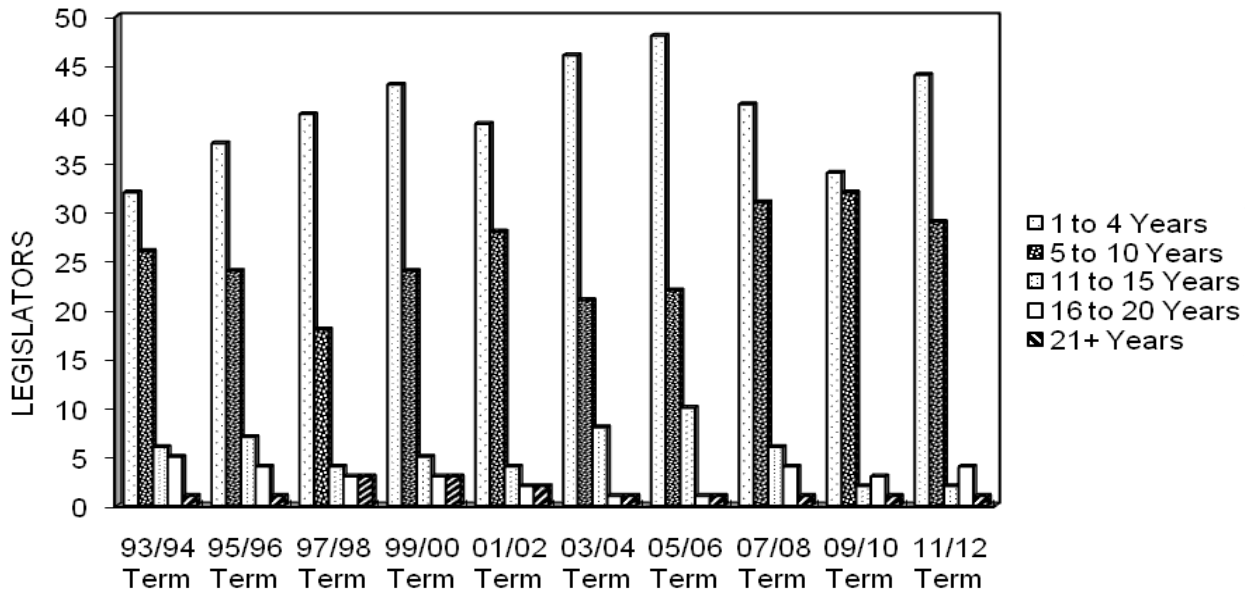
**TENURE**

The 2011 Senate included 18 new senators. Thirteen of the new members had previous legislative experience. Ten of these new Senate members were representatives in 2010. The new senators comprised 51 percent of the entire Senate membership.

The average length of legislative service prior to 2011 by all senators was 5.8 years. The Republicans had an average of 6.1 years of prior legislative service, and the Democrats' average prior legislative service was 4.4 years. The greatest length of prior legislative service by a senator was 23 years. This data is compared with data from previous legislative terms in Table E and Graph 18.

## GRAPH 17

### LEGISLATOR TENURE All Legislators



Twenty-seven new representatives served in the 2011 House of Representatives. For 20, it was their first experience as legislators. Seven had served in the Legislature in the past. Two of the new House members were senators in 2010. These new representatives comprised 39 percent of the entire House of Representatives membership. Twenty-two of the representatives were beginning their second term and 9 were beginning their third term.

The average length of prior legislative service of all House members was 3.7 years. The Democrats had an average of 5.4 years of prior legislative service and the Republicans' average prior legislative service was 3.1 years. The greatest length of prior legislative service by a representative was 20 years. This data is compared with data from previous legislative terms in Table F and Graph 19.

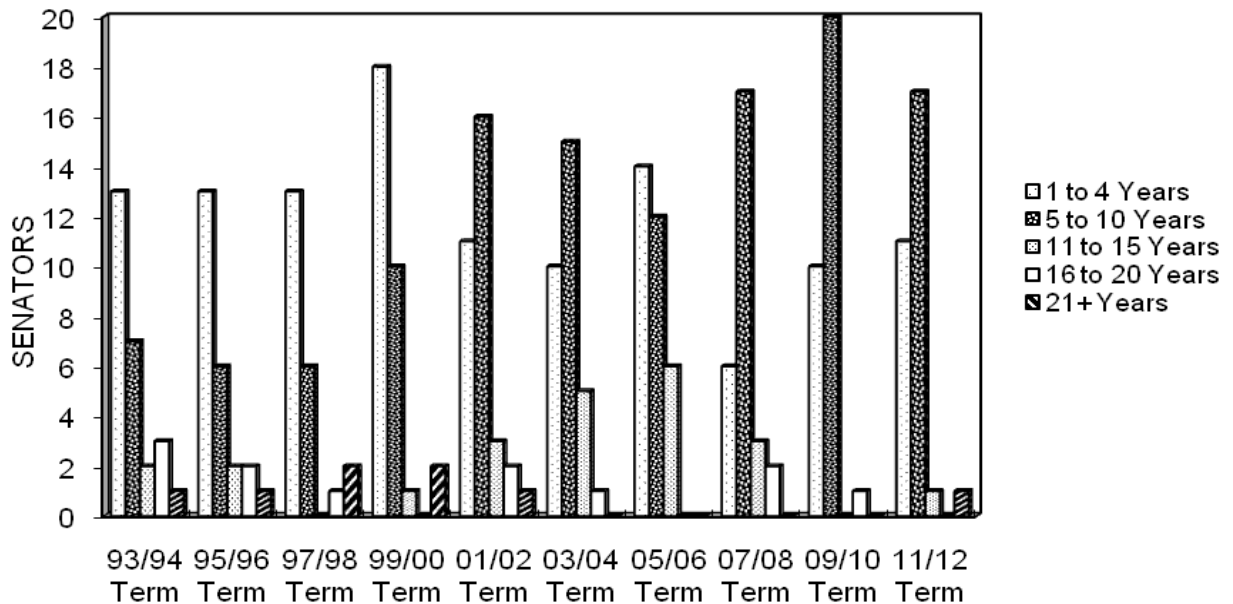
**TABLE E**

**PRIOR LEGISLATIVE SERVICE OF SENATE MEMBERS  
(in years)**

	1999-2000	2001-2002	2003-2004	2005-2006	2007-2008	2009-2010	2011-2012
Average prior legislative service per senator	7.7	7.4	6.5	6.3	6.2	5.7	5.8
Senate Democrats average prior legislative service	8.0	9.8	10.9	6.8	5.3	6.6	4.4
Senate Republicans average prior legislative service	7.5	6.2	4.9	6.1	6.8	5.0	6.1
Greatest length of prior legislative service	28	22	20	14	16	18	23

**GRAPH 18**

**LEGISLATOR TENURE  
in Senate**





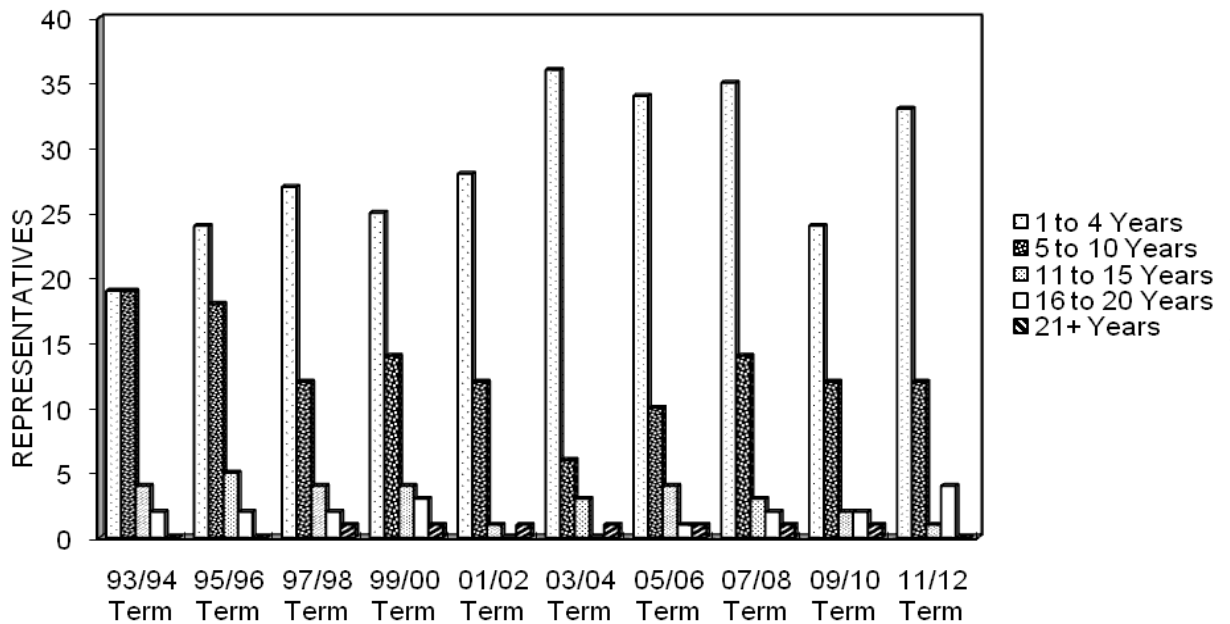
**TABLE F**

**PRIOR LEGISLATIVE SERVICE OF HOUSE MEMBERS  
(in years)**

	1999-2000	2001-2002	2003-2004	2005-2006	2007-2008	2009-2010	2011-2012
Average prior legislative service per representative	4.2	2.9	2.9	3.7	4.2	3.3	3.7
House Democrats average prior legislative service	6.1	3.1	3.0	4.5	5.3	3.3	5.4
House Republicans average prior legislative service	3.5	2.8	2.9	3.3	3.8	3.2	3.1
Greatest length of prior legislative service	26	22	24	26	28	21	20

**GRAPH 19**

**LEGISLATOR TENURE  
in House of Representatives**

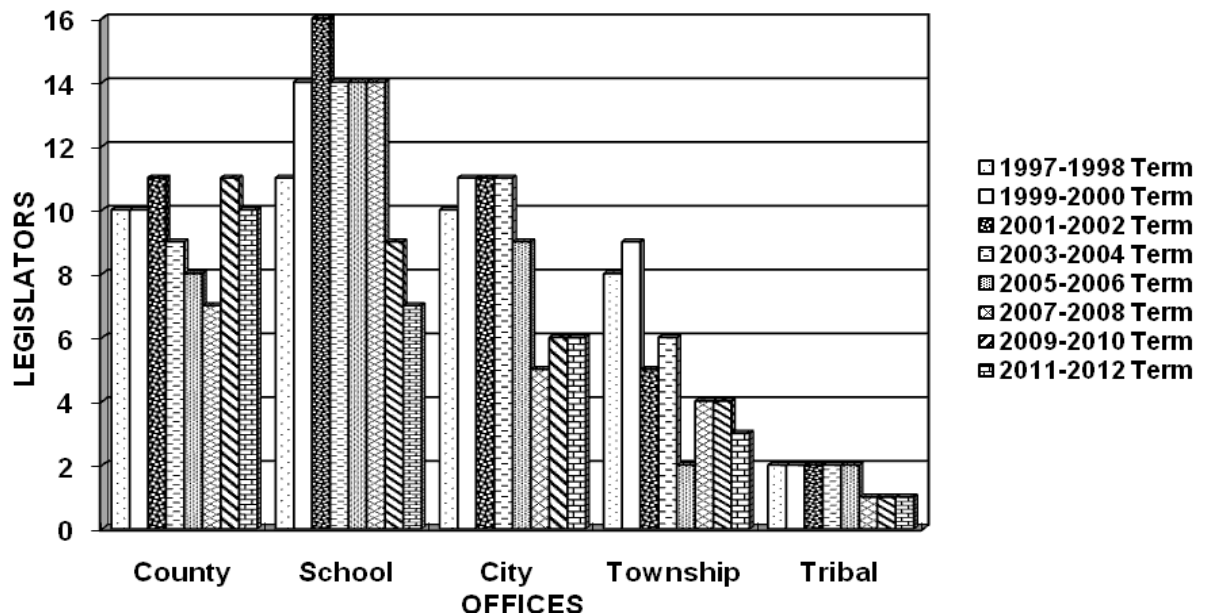


## **PUBLIC SERVICE**

In the 2011 Legislature, 25 members held at least one other public office before serving in the Legislature. Seven legislators had been school board members and ten legislators had held county positions. Six legislators had been city officials, three had been township officials, and one had held a tribal office. This data is compared with data from previous legislative terms in the following graph.

**GRAPH 20**

**OTHER PUBLIC OFFICES HELD  
ALL LEGISLATORS**



## THE SENATE

There was one change in membership from the 2010 election to the 2011 Senate. Senator-elect Eldon Nygaard switched from the Democratic Party to the Republican Party before the beginning of the 2011 Legislature.

### **Senate Leadership**

The **Senate** leadership for the Eighty-sixth Legislature was as follows:

**President:**

Lt. Governor Matt Michels, Yankton

**President Pro Tempore:**

Bob Gray, Pierre

**Majority Leader:**

Russell Olson, Wentworth

**Assistant Majority Leader:**

Corey Brown, Gettysburg

**Majority Whips:**

Shantel Krebs, Renner

Tim Rave, Baltic

Craig Tieszen, Rapid City

**Minority Leader:**

Jason Frerichs, Wilmot

**Assistant Minority Leader:**

Jim Hundstad, Bath

**Minority Whip:**

Jim Bradford, Pine Ridge

# THE HOUSE OF REPRESENTATIVES

## House of Representatives Leadership

The **House of Representatives** leadership for the Eighty-sixth Legislature was as follows:

**Speaker:**

Val Rausch, Big Stone City

**Speaker Pro Tempore:**

Brian Gosch, Rapid City

**Majority Leader:**

David Lust, Rapid City

**Assistant Majority Leader:**

Justin Cronin, Gettysburg

**Majority Whips:**

Charles Hoffman, Eureka

Nick Moser, Yankton

Jacqueline Sly, Rapid City

Hal Wick, Sioux Falls

**Minority Leader:**

Bernie Hunhoff, Yankton

**Assistant Minority Leader:**

Mitch Fargen, Flandreau

**Minority Whips:**

Susy Blake, Sioux Falls

Peggy Gibson, Huron

## THE LEGISLATIVE COMMITTEES

The 2011 Legislature was divided into 13 standing committees. There were a few changes from the 2010 Legislature. The membership of the Senate Appropriations Committee was increased from 7 to 9 and the membership of the Senate Taxation Committee was reduced from 9 to 7. The name of the Commerce Committee in both the Senate and the House of Representatives was changed to the Commerce and Energy Committee. The committees and their membership were as follows:

	<b>Senate</b>	<b>House</b>
1. Agriculture and Natural Resources	9	13
2. Appropriations	9	9
3. Commerce and Energy	7	13
4. Education	7	15
5. Government Operations and Audit	5	5
6. Health and Human Services	7	13
7. Judiciary	7	13
8. Legislative Procedure	7	7
9. Local Government	7	13
10. Retirement Laws	5	5
11. State Affairs	9	13
12. Taxation	7	15
13. Transportation	7	13

The workload of the various committees in 2011 and over the past 9 years is summarized in Table G on pages 24 and 25.

The number of standing committees each legislative session since 1891 is summarized in Table H on page 28.

**TABLE G****TOTAL NUMBER OF BILLS AND RESOLUTIONS REFERRED TO COMMITTEES FOR  
YEARS 2002 THROUGH 2011****SENATE**

<b>COMMITTEE</b>	<b>2002</b>	<b>2003</b>	<b>2004</b>	<b>2005</b>	<b>2006</b>	<b>2007</b>	<b>2008</b>	<b>2009</b>	<b>2010</b>	<b>2011</b>
<b>AGRICULTURE &amp; NATURAL RESOURCES</b>	19	33	26	33	29	38	32	29	23	18
<b>APPROPRIATIONS</b>	24	25	52	31	62	52	60	41	36	31
<b>COMMERCE &amp; ENERGY</b>	63	56	63	63	49	51	60	53	48	51
<b>EDUCATION</b>	28	30	27	42	38	46	49	37	34	32
<b>HEALTH &amp; HUMAN SERVICES</b>	17	27	33	29	23	44	24	30	24	28
<b>GOVERNMENT OPERATIONS &amp; AUDIT</b>	0	1	0	2	2	8	5	0	1	0
<b>JUDICIARY</b>	56	49	68	60	65	80	66	56	58	53
<b>LEGISLATIVE PROCEDURE</b>	0	0	0	0	1	0	0	0	0	0
<b>LOCAL GOVERNMENT</b>	28	42	27	38	24	33	20	28	30	45
<b>RETIREMENT LAWS</b>	4	5	10	5	7	0	7	2	4	3
<b>STATE AFFAIRS</b>	70	64	68	48	55	62	51	65	56	44
<b>TAXATION</b>	29	41	27	37	39	32	26	24	27	15
<b>TRANSPORTATION</b>	<u>23</u>	<u>24</u>	<u>33</u>	<u>32</u>	<u>24</u>	<u>19</u>	<u>30</u>	<u>28</u>	<u>28</u>	<u>19</u>
<b>TOTAL By Year</b>	361	397	434	420	418	465	430	393	369	339

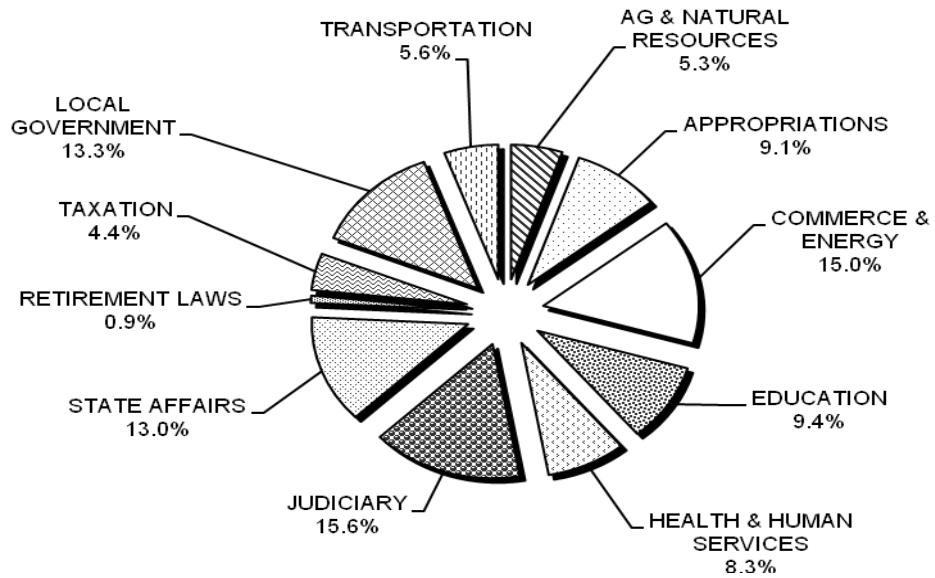
**TABLE G (continued)**

**HOUSE OF REPRESENTATIVES**

<b>COMMITTEE</b>	<b>2002</b>	<b>2003</b>	<b>2004</b>	<b>2005</b>	<b>2006</b>	<b>2007</b>	<b>2008</b>	<b>2009</b>	<b>2010</b>	<b>2011</b>
<b>AGRICULTURE &amp; NATURAL RESOURCES</b>	36	26	29	27	28	33	37	34	30	29
<b>APPROPRIATIONS</b>	24	23	44	39	50	55	55	49	43	42
<b>COMMERCE &amp; ENERGY</b>	60	54	55	50	48	54	67	73	51	50
<b>EDUCATION</b>	45	43	36	34	30	54	56	45	35	26
<b>HEALTH &amp; HUMAN SERVICES</b>	30	30	36	31	28	33	20	22	25	27
<b>GOVERNMENT OPERATIONS &amp; AUDIT</b>	0	2	0	3	2	5	6	0	1	0
<b>JUDICIARY</b>	57	55	75	64	66	90	75	70	65	66
<b>LEGISLATIVE PROCEDURE</b>	0	0	0	0	0	0	0	0	0	0
<b>LOCAL GOVERNMENT</b>	37	46	34	29	32	44	34	40	40	48
<b>RETIREMENT LAWS</b>	6	5	9	5	6	0	9	3	4	3
<b>STATE AFFAIRS</b>	70	83	77	62	53	57	67	68	65	68
<b>TAXATION</b>	39	39	35	40	35	30	22	34	37	22
<b>TRANSPORTATION</b>	<u>38</u>	<u>29</u>	<u>40</u>	<u>31</u>	<u>25</u>	<u>24</u>	<u>31</u>	<u>27</u>	<u>30</u>	<u>19</u>
<b>TOTAL By Year</b>	442	435	470	415	403	479	479	465	426	400

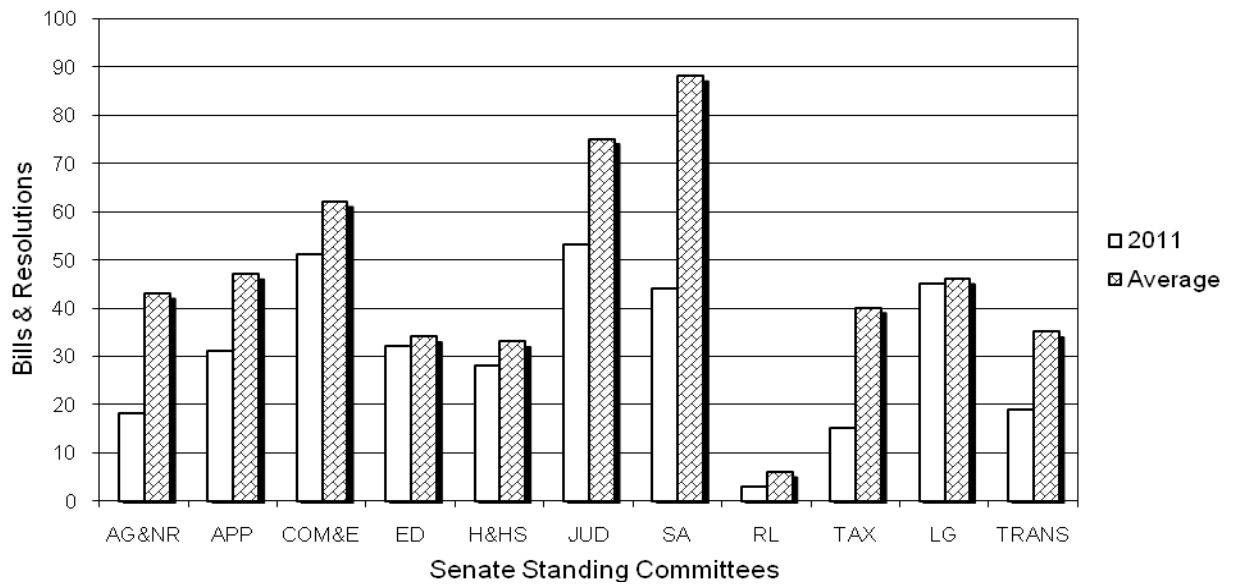
**GRAPH 21**

**2011 DISTRIBUTION OF BILLS  
To Senate Committees**



**GRAPH 22**

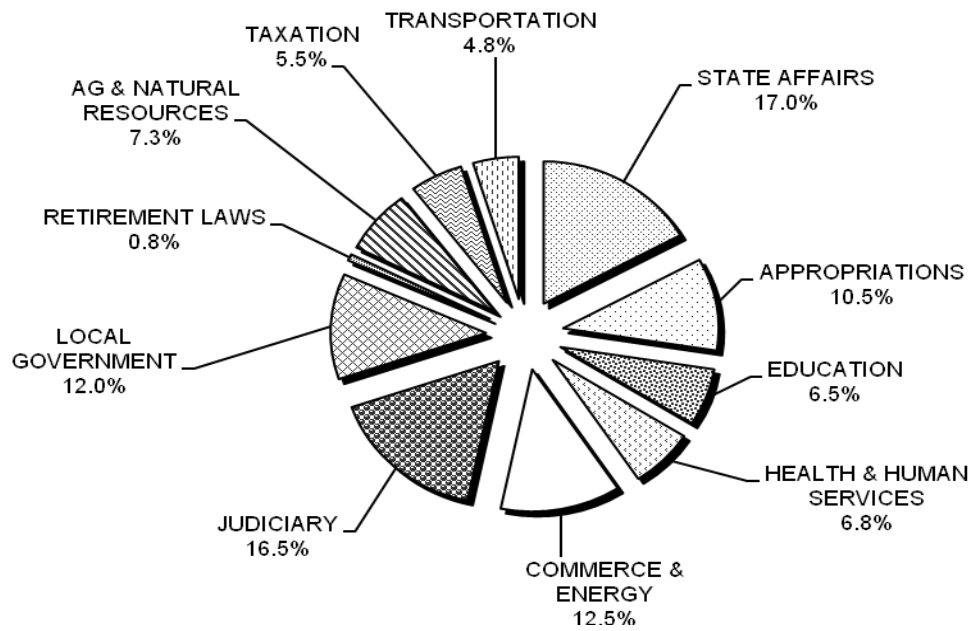
**2011 SENATE COMMITTEE WORKLOAD  
Compared to Average Year**





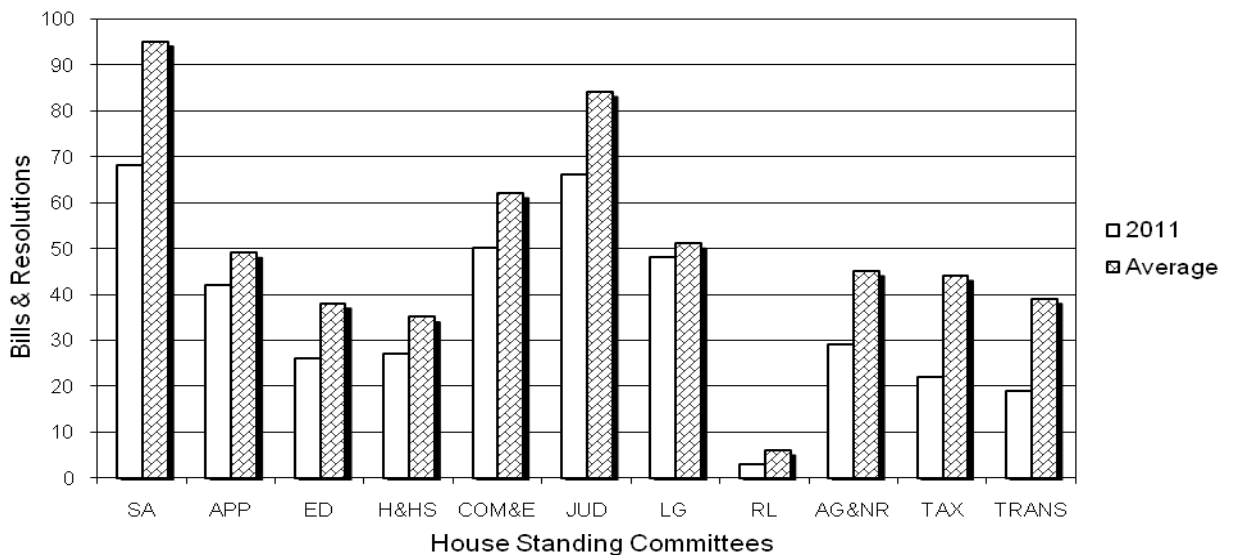
**GRAPH 23**

**2011 DISTRIBUTION OF BILLS  
To House Committees**



**GRAPH 24**

**2011 HOUSE COMMITTEE WORKLOAD  
Compared to Average Year**

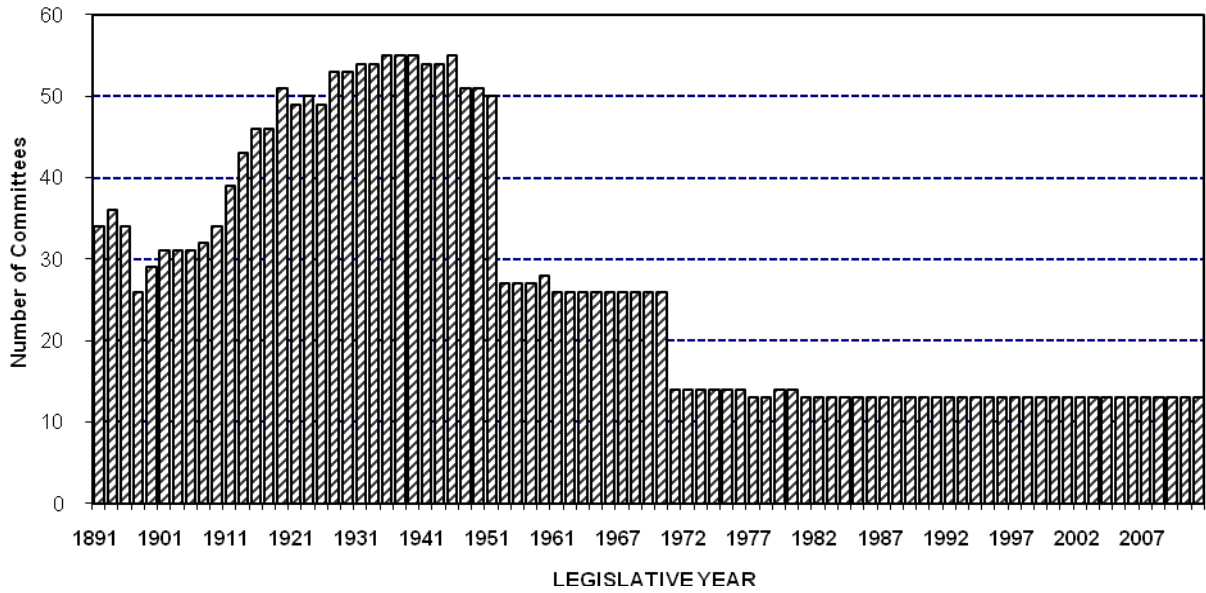


**TABLE H****NUMBER OF STANDING LEGISLATIVE COMMITTEES EACH SESSION  
FOR YEARS 1891 THROUGH 2011**

<b>YEAR</b>	<b>SENATE</b>	<b>HOUSE</b>	<b>YEAR</b>	<b>SENATE</b>	<b>HOUSE</b>
1891	34	34	1972	14	14
1893	36	32	1973	14	14
1895	34	35	1974	14	14
1897	26	33	1975	14	14
1899	29	33	1976	14	14
1901	31	38	1977	13	13
1903	31	39	1978	13	13
1905	31	42	1979	14	14
1907	32	42	1980	14	14
1909	34	43	1981	13	13
1911	39	47	1982	13	13
1913	43	50	1983	13	13
1915	46	49	1984	13	13
1917	46	50	1985	13	13
1919	51	51	1986	13	13
1921	49	55	1987	13	13
1923	50	54	1988	13	13
1925	49	56	1989	13	13
1927	53	56	1990	13	13
1929	53	59	1991	13	13
1931	54	59	1992	13	13
1933	54	59	1993	13	13
1935	55	59	1994	13	13
1937	55	59	1995	13	13
1939	55	58	1996	13	13
1941	54	58	1997	13	13
1943	54	54	1998	13	13
1945	55	55	1999	13	13
1947	51	51	2000	13	13
1949	51	51	2001	13	13
1951	50	51	2002	13	13
1953	27	51	2003	13	13
1955	27	50	2004	13	13
1957	27	50	2005	13	13
1959	28	50	2006	13	13
1961	26	27	2007	13	13
1963	26	25	2008	13	13
1964	26	25	2009	13	13
1965	26	26	2010	13	13
1966	26	27	2011	13	13
1967	26	27			
1968	26	27			
1969	26	27			
1970	26	27			
1971	14	14			

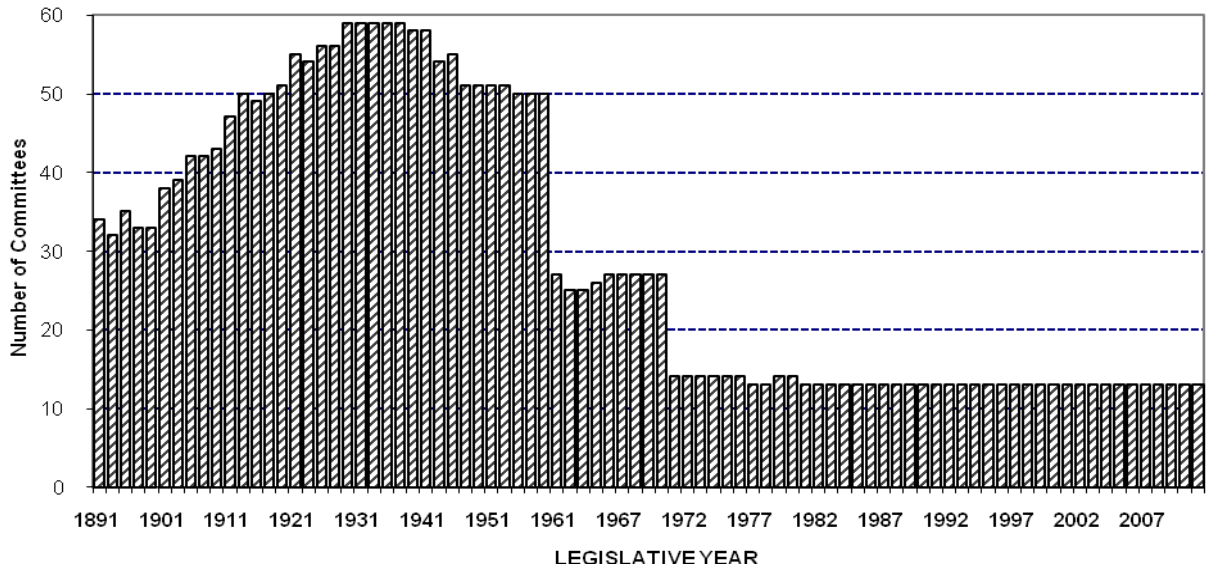
**GRAPH 25**

**SENATE COMMITTEES**  
Number Each Legislative Session



**GRAPH 26**

**HOUSE COMMITTEES**  
Number Each Legislative Session





## **2011 DISPOSITION OF BILLS AND RESOLUTIONS**

During the 2011 Legislative Session, 458 bills were introduced. This number was 16 fewer than in 2010 and was 135 fewer than the average number of bills previously introduced in a 40-day session. The highest number of bills ever introduced in a legislative session was in 1957 when 929 bills were introduced. The lowest number of bills ever introduced was 432 in 1964.

There were 202 Senate bills introduced. The number of Senate bills introduced was six more than in 2010 and was 54 fewer than the average number of Senate bills previously introduced in a 40-day session. The record for the highest number of Senate bills introduced in a legislative session is 405 which was set in 1913. The record for the fewest Senate bills was set in 2002 when only 187 Senate bills were introduced.

Two hundred fifty-six House bills were introduced. The number of House bills was 22 fewer than in 2010 and was 81 fewer than the average number of bills previously introduced in a 40-day session. The record for the highest number of House bills introduced in a legislative session occurred in 1957 when 576 were introduced. The fewest number of House bills ever introduced occurred in 1905 when only 212 were introduced.

Of all the bills introduced in 2011, 228 passed both houses of the Legislature and were delivered to the Governor. The Governor vetoed four bills and two of those vetoes were overridden by the Legislature. One bill was returned by the Governor for style and form changes. The Legislature did not approve the Governor's recommended changes to that bill and the bill was ultimately vetoed by the Governor. The 226 bills that became law were 105 fewer than the average number of bills previously enacted in a 40-day session and were 21 fewer than became law in 2010. The most bills ever enacted in a single session occurred in 1957 when 505 bills were enacted. The fewest bills were enacted in 1897 when only 104 bills became law.

In 2011, 49.3 percent of the bills introduced were enacted. This was below the previous average of 55.8 percent for a 40-day session. This was slightly lower than in 2010 when

50.7 percent was enacted. The highest percentage of bills ever enacted in a single session occurred in 1947 when 73.1 percent of that year's bills were enacted. The lowest percentage of bills ever enacted in a single session occurred in 1897 when only 18.6 percent of the bills were enacted. In 2011, 44.1 percent of the House bills introduced were enacted. This was lower than the previous average percentage of House bills enacted in a 40-day session of 56.0 percent. Also, 55.9 percent of the Senate bills introduced were enacted. This was slightly above the previous average percentage of Senate bills enacted in a 40-day session of 55.6 percent.

The number of bills vetoed in 2011 (4) was four fewer than the average number of bills vetoed each year. Only in the years 1933 and 1955 were no bills vetoed by the Governor. The most bills vetoed occurred in 1980 when 30 bills were vetoed.

The number of concurrent resolutions introduced in 2011 was 22. This was one fewer than was introduced in 2010. Fifteen of the concurrent resolutions introduced in 2011 were adopted.

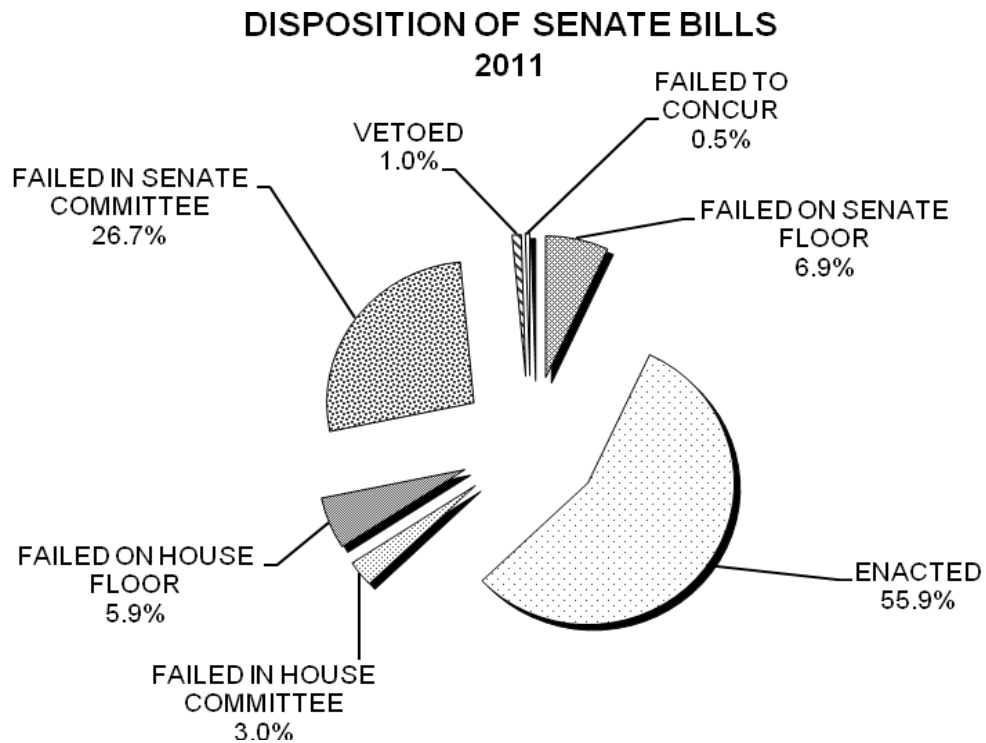
There were four House joint resolutions and one Senate joint resolution introduced in 2010. None of the joint resolutions were adopted. The number of joint resolutions introduced was eight fewer than introduced in 2010.

There were 53 House commemorations and 23 Senate commemorations introduced and approved in the 2011 Legislature. Since the Legislature started issuing commemorations in 1989, there has been an average of 20 Senate commemorations and 23 House commemorations each session.

**TABLE I**  
**DISPOSITION OF SENATE BILLS**  
**2011**

Failed in Senate committee	54
Failed on Senate floor	14
Failed in House committee	6
Failed on House floor	12
Failed to concur	1
Vetoed	2
Enacted	<u>113</u>
Total	202

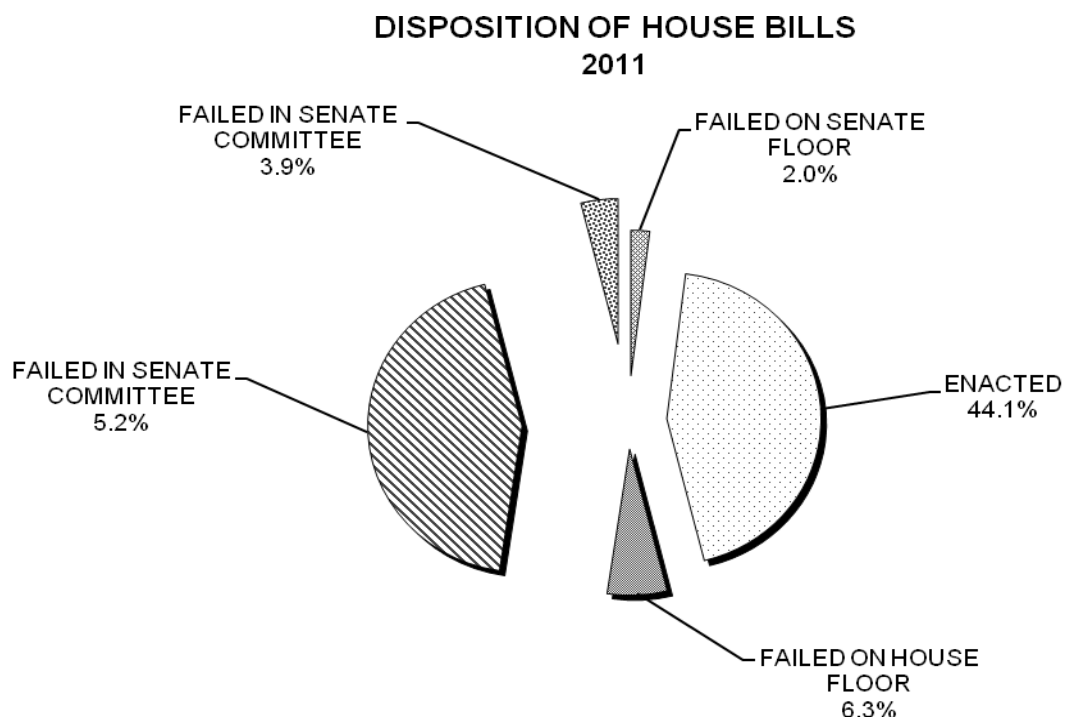
**GRAPH 27**



**TABLE J**  
**DISPOSITION OF HOUSE BILLS**  
**2011**

Failed in House committee	112
Failed on House floor	16
Failed in Senate committee	10
Failed on Senate floor	5
Failed to concur	0
Vetoed	0
Enacted	<u>113</u>
Total	256

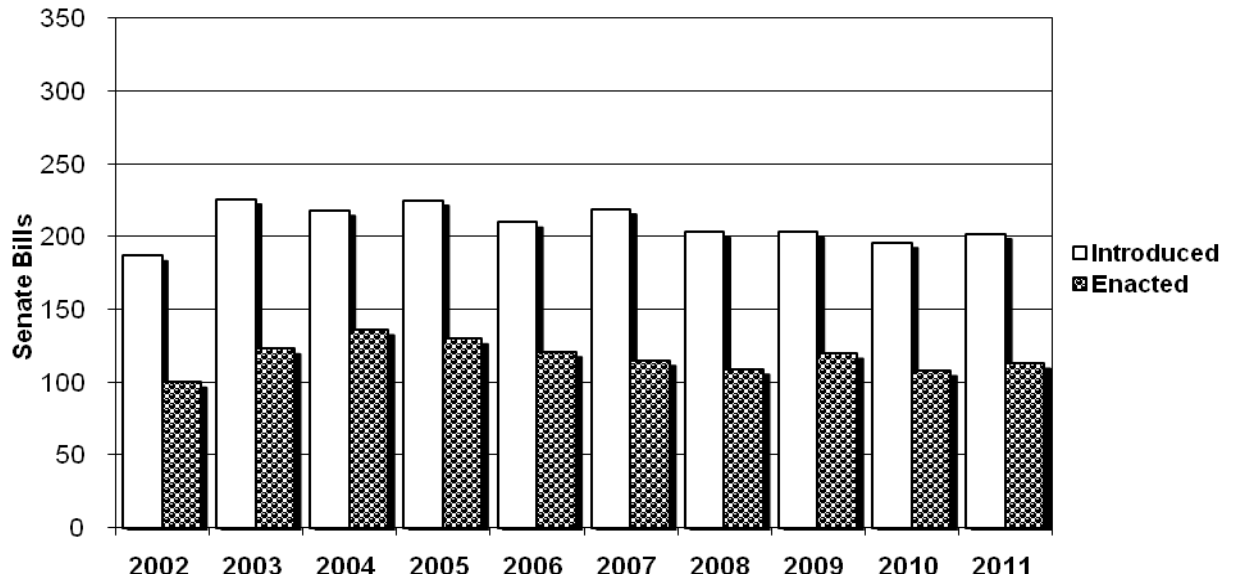
**GRAPH 28**





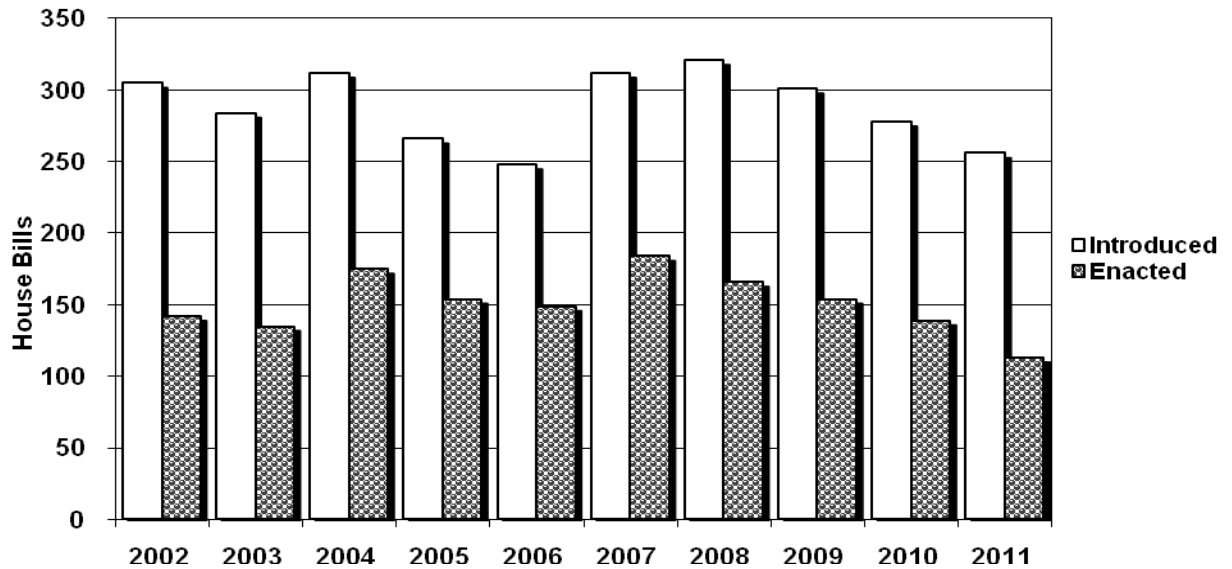
**GRAPH 29**

**DISPOSITION OF SENATE BILLS**  
2002-2011



**GRAPH 30**

**DISPOSITION OF HOUSE BILLS**  
2002-2011



**TABLE K**

**DISPOSITION OF SENATE BILLS FOR YEARS 1890 THROUGH 2011**

<b>Session</b>	<b>Introduced</b>	<b>Delivered</b>	<b>Enacted</b>	<b>Percent Enacted</b>
1890#	270	64	60	22.2%
1891#	263	66	64	24.3%
1893#	316	106	100	31.6%
1895#	370	79	74	20.0%
1897#	249	55	52	20.9%
1899#	299	74	66	22.1%
1901#	226	86	85	37.6%
1903#	233	103	99	42.5%
1905#	245	98	94	38.4%
1907#	291	120	119	40.9%
1909#	333	127	126	37.8%
1911#	322	113	110	34.2%
1913#	405	148	135	33.3%
1915#	318	153	151	47.5%
1917#	304	166	161	53.0%
1919#	275	197	195	70.9%
1921#	348	216	209	60.1%
1923#	335	153	151	42.5%
1925#	319	179	178	55.8%
1927#	268	106	101	37.7%
1929#	231	118	115	49.8%
1931#	241	129	128	53.1%
1933#	215	98	98	45.6%
1935#	222	119	117	52.7%
1937#	283	134	131	46.3%
1939#	322	126	124	38.5%
1941#	377	194	191	50.7%
1943#	235	154	151	64.3%
1945#	299	217	217	72.6%
1947#	267	215	214	80.1%
1949#	292	217	216	74.0%
1951#	326	234	232	71.2%
1953#	351	231	228	65.0%
1955#	393	221	221	56.2%
1957#	353	165	164	46.5%
1959#	386	204	199	51.6%
1961#	372	227	220	59.1%
1963**	371	222	218	58.8%
1964*	193	111	110	57.0%
1965**	251	132	131	52.2%
1966*	200	104	103	51.5%
1967**	256	141	140	54.7%
1968*	213	117	114	53.5%
1969**	240	125	121	50.4%
1970*	220	113	110	50.0%
1971**	250	120	115	46.0%
1972*	278	123	120	43.2%
1973**	239	117	117	49.0%
1974*	263	154	154	58.6%
1975**	333	176	175	52.6%
1976*	274	130	125	45.6%

**TABLE K (continued)**

<b>Session</b>	<b>Introduced</b>	<b>Delivered</b>	<b>Enacted</b>	<b>Percent Enacted</b>
1977**	291	151	149	51.2%
1978*	343	165	159	46.4%
1979**	272	161	155	57.0%
1980*	256	153	141	55.1%
1981***	248	146	136	54.8%
1982****	245	159	152	62.0%
1983***	257	162	159	61.9%
1984****	223	134	128	57.4%
1985***	311	189	186	59.8%
1986****	293	184	179	61.1%
1987***	285	160	152	53.3%
1988****	348	211	204	58.6%
1989***	328	196	194	59.1%
1990****	342	181	179	52.3%
1991***	268	167	163	60.8%
1992****	273	169	166	60.8%
1993***	312	176	173	55.4%
1994****	269	149	146	54.3%
1995***	242	124	120	49.6%
1996****	287	147	142	49.5%
1997***	272	153	149	54.8%
1998****	242	139	135	55.8%
1999***	252	125	119	47.2%
2000****	209	109	109	52.2%
2001***	255	137	132	51.8%
2002****	187	102	100	53.5%
2003***	226	125	123	54.4%
2004****	218	138	136	62.4%
2005***	225	132	130	57.8%
2006****	210	121	121	57.6%
2007***	219	118	115	52.5%
2008****	203	110	109	53.7%
2009***	203	120	120	59.1%
2010***	196	110	108	55.1%
2011***	202	115	113	55.9%

<b>Averages</b>	<b>Introduced</b>	<b>Delivered</b>	<b>Enacted</b>	<b>Percent Enacted</b>
# 60-Day Biennial	301	146	143	47.5%
** 45-Day Sessions	278	149	147	52.8%
* 30-Day Sessions	249	130	126	50.7%
*** 40-Day Sessions+	253	144	141	55.6%
**** 35-Day Sessions++	254	147	143	56.5%

+ Includes 39-day session in 1985, 1999, and 2010 and 38-day session in 2011

++ Includes 34-day session in 1998 and 2000

**TABLE L****DISPOSITION OF HOUSE BILLS FOR YEARS 1890 THROUGH 2011**

<b>Session</b>	<b>Introduced</b>	<b>Delivered</b>	<b>Enacted</b>	<b>Percent Enacted</b>
1890#	362	83	82	22.7%
1891#	307	50	48	15.6%
1893#	266	71	71	26.7%
1895#	352	92	90	25.6%
1897#	310	55	52	16.8%
1899#	272	63	60	22.1%
1901#	282	105	100	35.5%
1903#	297	125	124	41.8%
1905#	212	83	79	37.3%
1907#	303	132	130	42.9%
1909#	423	169	169	40.0%
1911#	416	164	154	37.0%
1913#	497	206	205	41.2%
1915#	398	148	144	36.2%
1917#	427	200	198	46.4%
1919#	281	168	168	59.8%
1921#	370	214	209	56.5%
1923#	334	160	159	47.6%
1925#	287	124	123	42.9%
1927#	271	129	122	45.0%
1929#	292	135	133	45.5%
1931#	328	144	141	43.0%
1933#	314	107	107	34.1%
1935#	225	93	91	40.4%
1937#	262	131	128	48.9%
1939#	318	173	171	53.8%
1941#	389	184	179	46.0%
1943#	248	168	166	66.9%
1945#	218	141	138	63.3%
1947#	310	212	208	67.1%
1949#	353	230	226	64.0%
1951#	365	239	237	64.9%
1953#	444	268	267	60.1%
1955#	422	221	221	52.4%
1957#	576	343	341	59.2%
1959#	526	268	260	49.4%
1961#	496	257	247	49.8%
1963**	469	253	252	53.7%
1964*	239	123	118	49.4%
1965**	399	186	182	45.6%
1966*	353	165	164	46.5%
1967**	394	218	214	54.3%
1968*	350	166	161	46.0%
1969**	394	171	167	42.4%
1970*	367	195	194	52.9%
1971**	380	193	188	49.5%
1972*	373	175	172	46.1%
1973**	410	238	237	57.8%
1974*	391	229	224	57.3%
1975**	342	175	172	50.3%
1976*	388	203	196	50.5%

**TABLE L (continued)**

<b>Session</b>	<b>Introduced</b>	<b>Delivered</b>	<b>Enacted</b>	<b>Percent Enacted</b>
1977**	448	270	260	58.0%
1978*	365	215	204	55.9%
1979**	343	201	191	55.7%
1980*	372	228	215	57.8%
1981***	383	245	237	61.9%
1982****	333	222	218	65.5%
1983***	368	239	228	62.0%
1984****	358	218	210	58.7%
1985***	373	213	207	55.5%
1986****	391	250	245	62.7%
1987***	371	238	235	63.3%
1988****	349	213	209	59.9%
1989***	433	256	256	59.1%
1990****	388	235	235	60.6%
1991***	417	258	254	60.9%
1992****	350	203	199	56.9%
1993***	356	212	206	57.9%
1994****	395	254	254	64.3%
1995***	360	185	178	49.4%
1996****	364	168	164	45.1%
1997***	285	159	151	53.0%
1998****	330	165	162	49.1%
1999***	304	142	141	46.4%
2000****	318	148	144	45.3%
2001***	298	166	160	53.7%
2002****	305	145	142	46.6%
2003***	284	136	135	47.5%
2004****	312	178	175	56.1%
2005***	266	158	154	57.9%
2006****	248	151	149	60.1%
2007***	312	186	184	59.0%
2008****	321	170	166	51.7%
2009***	301	155	154	51.2%
2010***	278	141	139	50.0%
2011***	256	113	113	44.1%

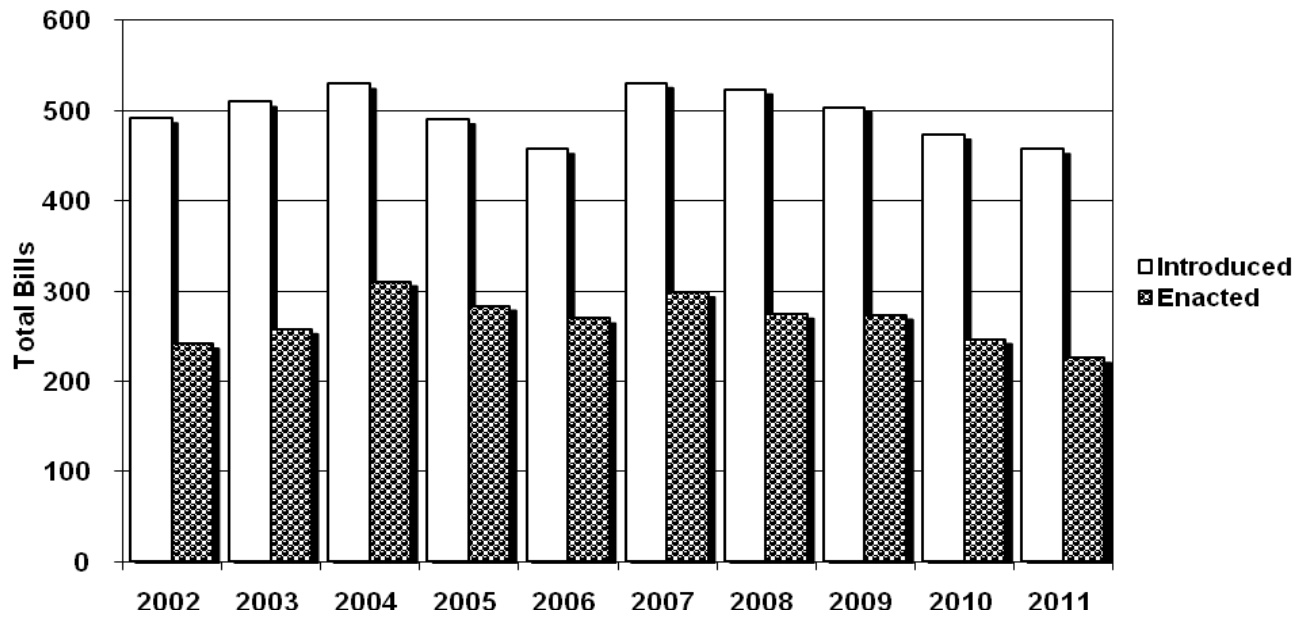
<b>Averages</b>	<b>Introduced</b>	<b>Delivered</b>	<b>Enacted</b>	<b>Percent Enacted</b>
# 60-Day Biennial	345	158	155	45.1%
** 45-Day Sessions	398	212	207	52.1%
* 30-Day Sessions	355	189	183	51.5%
*** 40-Day Sessions+	332	188	184	55.5%
**** 35-Day Sessions++	340	194	191	56.1%

+ Includes 39-day session in 1985, 1999, and 2010 and 38-day session in 2011

++ Includes 34-day session in 1998 and 2000

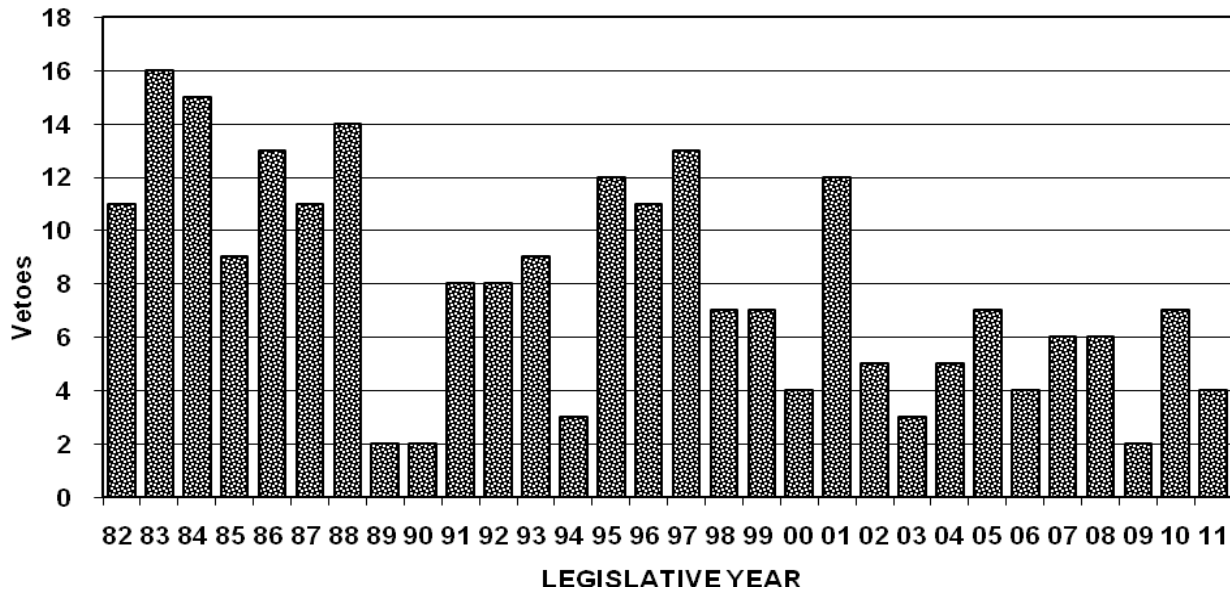
**GRAPH 31**

**DISPOSITION OF LEGISLATIVE BILLS**  
2002-2011



**GRAPH 32**

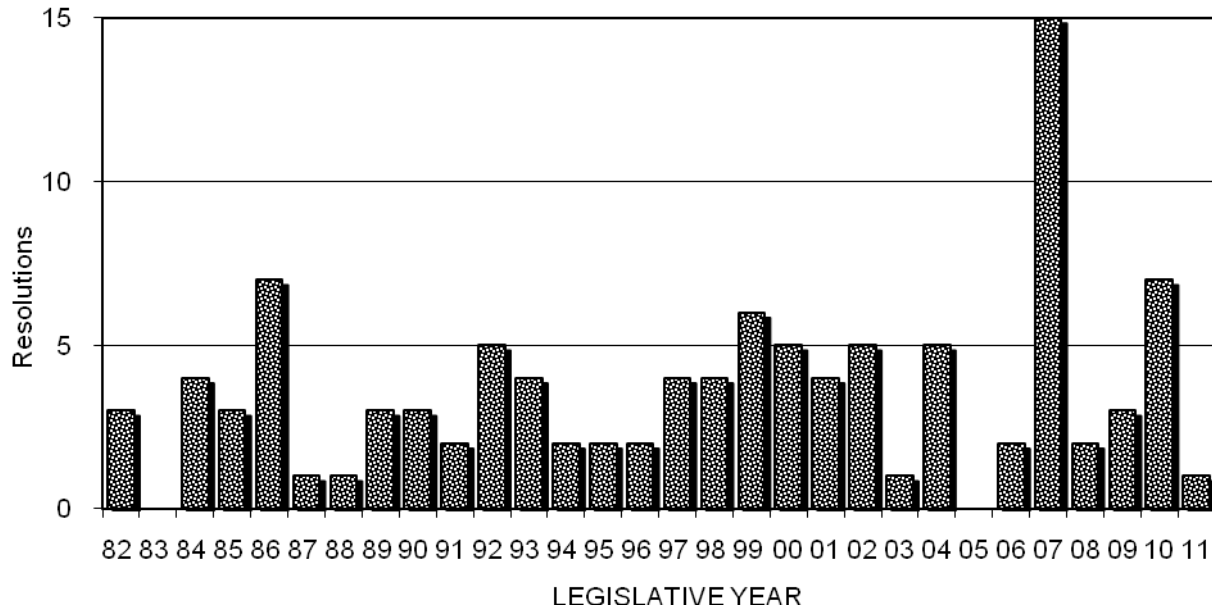
**VETOES**  
1982-2011



**GRAPH 33**

**SENATE JOINT RESOLUTIONS**

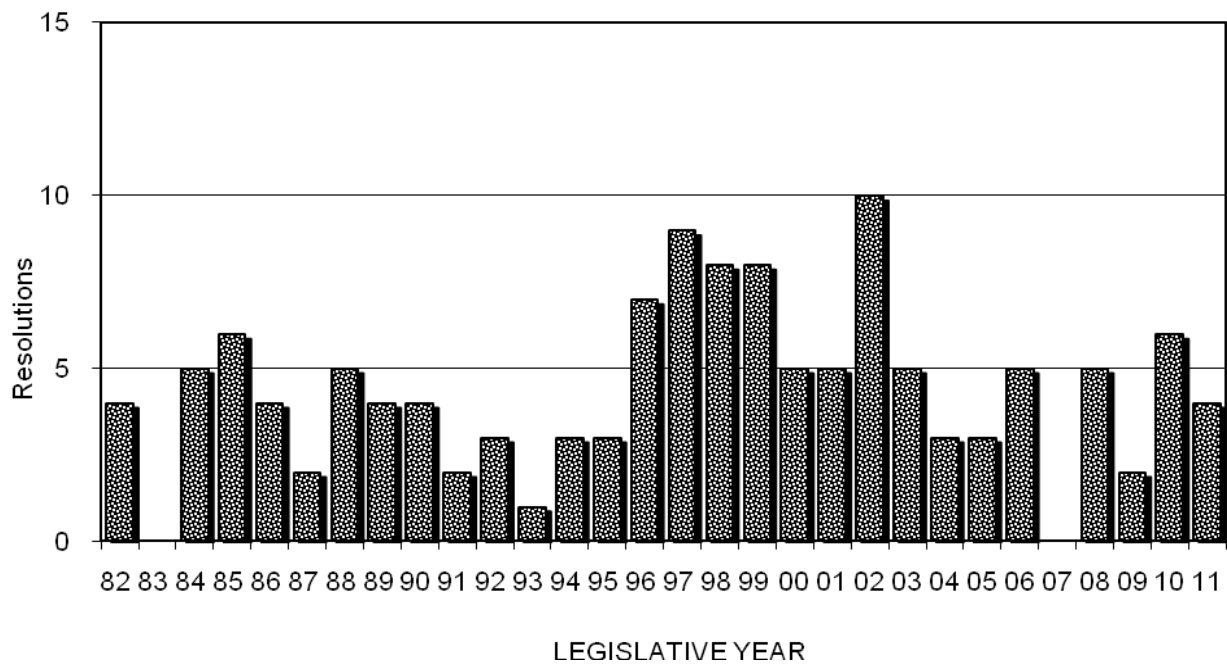
Introduced 1982-2011



**GRAPH 34**

**HOUSE JOINT RESOLUTIONS**

Introduced 1982-2011



**TABLE M****DISPOSITION OF ALL LEGISLATIVE BILLS FOR YEARS 1890 THROUGH 2011**

<b>Session</b>	<b>Introduced</b>	<b>Delivered</b>	<b>Vetoed<sup>a</sup></b>	<b>Enacted</b>	<b>Percent Enacted</b>
1890#	632	147	5	142	22.5%
1891#	570	116	4	112	19.6%
1893#	582	177	6	171	29.4%
1895#	722	171	7	164	22.7%
1897#	559	110	6	104	18.6%
1899#	571	137	11	126	22.1%
1901#	508	191	6 <sup>b</sup>	185	36.4%
1903#	530	228	5	223	42.1%
1905#	457	181	8	173	37.9%
1907#	594	252	3	249	41.9%
1909#	756	296	1	295	39.0%
1911#	738	277	13	264	35.8%
1913#	902	354	14	340	37.7%
1915#	716	301	6	295	41.2%
1917#	731	366	7	359	49.1%
1919#	556	365	2	363	65.3%
1921#	718	430	12	418	58.2%
1923#	669	313	3	310	46.3%
1925#	606	303	2	301	49.7%
1927#	539	235	12	223	41.4%
1929#	523	253	5	248	47.4%
1931#	569	273	4	269	47.3%
1933#	529	205	0	205	38.8%
1935#	447	212	4	208	46.5%
1937#	545	265	6	259	47.5%
1939#	640	299	4	295	46.1%
1941#	766	378	8	370	48.3%
1943#	483	322	5	317	65.6%
1945#	517	358	3	355	68.7%
1947#	577	427	5	422	73.1%
1949#	645	447	5	442	68.5%
1951#	691	473	4	469	67.9%
1953#	795	499	4	495	62.3%
1955#	815	442	0	442	54.2%
1957#	929	508	3	505	54.4%
1959#	912	472	13	459	50.3%
1961#	868	484	17 <sup>b</sup>	467	53.8%
1963**	840	475	5	470	56.0%
1964*	432	234	6	228	52.8%
1965**	650	318	5	313	48.2%
1966*	553	269	2	267	48.3%
1967**	650	359	6	354	54.5%
1968*	563	283	8	275	48.8%
1969**	634	296	8	288	45.4%
1970*	587	308	4	304	51.8%
1971**	630	313	10	303	48.1%
1972*	651	298	6	292	44.8%
1973**	649	355	1	354	54.6%
1974*	654	383	5	378	57.8%
1975**	675	351	4	347	51.4%
1976*	662	333	12	321	48.5%
1977**	739	421	28	409	55.4%



**TABLE M (continued)**

<b>Session</b>	<b>Introduced</b>	<b>Delivered</b>	<b>Vetoed<sup>a</sup></b>	<b>Enacted</b>	<b>Percent Enacted</b>
1978*	708	380	18	363	51.3%
1979**	615	362	18	346	56.3%
1980*	628	381	31 <sup>b</sup>	356	56.7%
1981***	631	391	20	373	59.1%
1982****	578	381	11	370	64.0%
1983***	625	401	16	387	61.9%
1984****	581	352	15	338	58.2%
1985***	684	402	9	393	57.5%
1986****	684	434	13	424	62.0%
1987***	656	398	11 <sup>b</sup>	387	59.0%
1988****	697	424	14	413	59.3%
1989***	761	452	2	450	59.1%
1990****	730	416	2	414	56.7%
1991***	685	425	8	417	60.9%
1992****	623	372	8	365	58.6%
1993***	668	388	9	379	56.7%
1994****	664	403	3	400	60.2%
1995***	602	309	12 <sup>b</sup>	298	49.5%
1996****	651	315	11	306	47.0%
1997***	557	312	13	300	53.9%
1998****	572	304	7	297	51.9%
1999***	556	267	7	260	46.8%
2000****	527	257	4	253	48.0%
2001***	553	303	12	292	52.8%
2002****	492	247	5	242	49.2%
2003***	510	261	3	258	50.6%
2004****	530	316	5 <sup>b</sup>	311	58.7%
2005***	491	290	7	284	57.8%
2006****	458	272	4	270	59.0%
2007***	531	304	6	299	56.3%
2008****	524	280	6	275	52.5%
2009***	504	275	2	274	54.4%
2010***	474	251	7	247	50.7%
2011***	458	228	4	226	49.3%

a - All bills vetoed, including those overridden, but doesn't include line item vetoes

b - Includes one bill returned for style and form changes but not approved by the Legislature

<b>Averages</b>	<b>Introduced</b>	<b>Delivered</b>	<b>Enacted</b>	<b>Percent Enacted</b>
# 60-Day Biennial	646	305	299	46.2%
** 45-Day Sessions	676	361	354	52.4%
* 30-Day Sessions	604	319	309	51.2%
*** 40-Day Sessions+	585	333	325	55.5%
**** 35-Day Sessions++	594	341	334	56.3%

+ Includes 39-day session in 1985, 1999, and 2010 and 38-day session in 2011

++ Includes 34-day session in 1998 and 2000

**TABLE N**

**BILLS VETOED BY THE GOVERNOR FOR YEARS 1890 THROUGH 2011**

<b>Session</b>	<b>Total Bills Vetoed<sup>a</sup></b>	<b>House Bills Vetoed</b>	<b>Senate Bills Vetoed</b>	<b>Veto Overridden<sup>b</sup></b>	<b>Line Items Vetoed in general Appropriations Bill</b>
1890	5	1	4	---	0
1891	4	2	2	---	0
1893	6	0	6	---	0
1895	7	2	5	---	0
1897	6	3	3	---	4
1899	11	3	8	---	3
1901	6 <sup>c</sup>	5 <sup>c</sup>	1	---	0
1903	5	1	4	---	0
1905	8	4	4	---	0
1907	3	2	1	---	0
1909	1	0	1	---	0
1911	13	10	3	---	0
1913	14	1	13	---	0
1915	6	4	2	---	4
1917	7	2	5	---	0
1919	2	0	2	---	0
1921	12	5	7	---	0
1923	3	1	2	---	0
1925	2	1	1	---	2 <sup>d</sup>
1927	12	7	5	---	16 <sup>d</sup>
1929	5	2	3	---	1
1931	4	3	1	---	0
1933	0	0	0	---	0
1935	4	2	2	---	0
1937	6	3	3	---	0
1939	4	2	2	---	0
1941	8	5	3	---	0
1943	5	2	3	---	0
1945	3	3	0	---	0
1947	5	4	1	---	0
1949	5	4	1	---	0
1951	4	2	2	---	0
1953	4	1	3	---	0
1955	0	0	0	---	0
1957	3	2	1	---	0
1959	13	8	5	---	0
1961	17 <sup>c</sup>	10 <sup>c</sup>	7	---	0
1963	5	1	4	0	0
1964	6	5	1	0	0
1965	5	4	1	0	0
1966	2	1	1	0	0
1967	6	4	2	0	0
1968	8	5	3	0	1
1969	8	4	4	0	0
1970	4	1	3	0	0
1971	10	5	5	0	2
1972	6	3	3	0	2
1973	1	1	0	0	0
1974	5	5	0	0	1
1975	4	3	1	0	0

**TABLE N (continued)**

<b>Session</b>	<b>Total Bills Vetoed<sup>a</sup></b>	<b>House Bills Vetoed</b>	<b>Senate Bills Vetoed</b>	<b>Veto Overrides<sup>b</sup></b>	<b>Line Items Vetoed in General Appropriations Bill</b>
1976	12	7	5	0	0
1977	28	17	11	16	0
1978	18	12	6	1	0
1979	18	11	7	2	0
1980	31 <sup>c</sup>	16 <sup>c</sup>	15	6	1
1981	20	8	12	2	0
1982	11	4	7	0	0
1983	16	12	4	2	0
1984	15	9	6	2 <sup>e</sup>	1
1985	9	6	3	0	0
1986	13	6	7	3	0
1987	11 <sup>c</sup>	3	8 <sup>c</sup>	0	0
1988	14	5	9	3	15
1989	2	0	2	0	0
1990	2	0	2	0	0
1991	8	4	4	0	0
1992	8	4	4	1	5
1993	9	6	3	0	0
1994	3	0	3	0	0
1995	12 <sup>c</sup>	7	5	1	0
1996	11	4	7	2	2
1997	13	9	4	1	0
1998	7	3	4	0	0
1999	7	1	6	1 <sup>f</sup>	0
2000	4	4	0	0	0 <sup>g</sup>
2001	12	7	5	1	0
2002	5	3	2	0	0
2003	3	1	2	1 <sup>h</sup>	2 <sup>g</sup>
2004	5 <sup>c</sup>	2	3 <sup>c</sup>	0	0
2005	7	5	2	1	2 <sup>g</sup>
2006	4	4	0	2	0 <sup>g</sup>
2007	6	3	3	1	0
2008	6	5	1	1	2
2009	2	2	0	1	0
2010	7	4	3	3	0
2011	4	2	2 <sup>c</sup>	2	0

a - Doesn't include line item vetoes of general appropriations bill

b - Data on veto overrides incomplete prior to 1963

c - Includes one bill returned for style and form changes but not approved by the Legislature

d - General appropriations bill not passed during regular session but was passed in a special legislative session held prior to the beginning of the fiscal year

e - Includes override of line item veto

f - Override of style and form veto

g - Doesn't include a line item veto of special appropriations bill

h - Override of line item veto of special appropriations bill

**TABLE 0**

**DISPOSITION OF JOINT RESOLUTIONS FOR YEARS 1909 THROUGH 2011**

<b>Session</b>	<b>House Joint Resolutions (Introduced) (Adopted)</b>		<b>Senate Joint Resolutions (Introduced) (Adopted)</b>	
1909	38	24	14	3
1911	16	3	25	10
1913	23	10	41	21
1915	20	8	9	4
1917	17	9	17	8
1919	5	0	6	3
1921	7	2	11	5
1923	9	2	9	2
1925	5	0	9	2
1927	3	0	7	0
1929	6	3	7	3
1931	11	2	6	0
1933	11	1	5	2
1935	11	3	8	3
1937	9	2	13	3
1939	15	4	11	1
1941	10	3	9	2
1943	7	1	2	1
1945	10	3	2	1
1947	8	4	4	1
1949	6	4	6	2
1951	2	1	4	3
1953	3	3	5	2
1955	5	1	8	1
1957	6	2	9	3
1959	8	3	13	3
1961	6	1	9	3
1963	8	1	6	3
1964	9	2	7	0
1965	8	1	7	1
1966	8	1	7	1
1967	11	0	9	2
1968	24	2	9	2
1969	7	3	6	0
1970	14	4	12	4
1971	5	1	7	1
1972	18	4	8	1
1973	2	0	3	1
1974	7	2	1	0
1975	5	1	6	3
1976	13	3	3	0
1977	20	14	5	0
1978	8	5	9	3
1979	6	1	5	3
1980	8	4	0	0
1981	4	0	5	0
1982	4	2	3	2
1983	0	0	0	0
1984	5	4	4	0
1985	6	4	3	1
1986	4	2	7	2
1987	2	1	1	0
1988	5	4	1	0

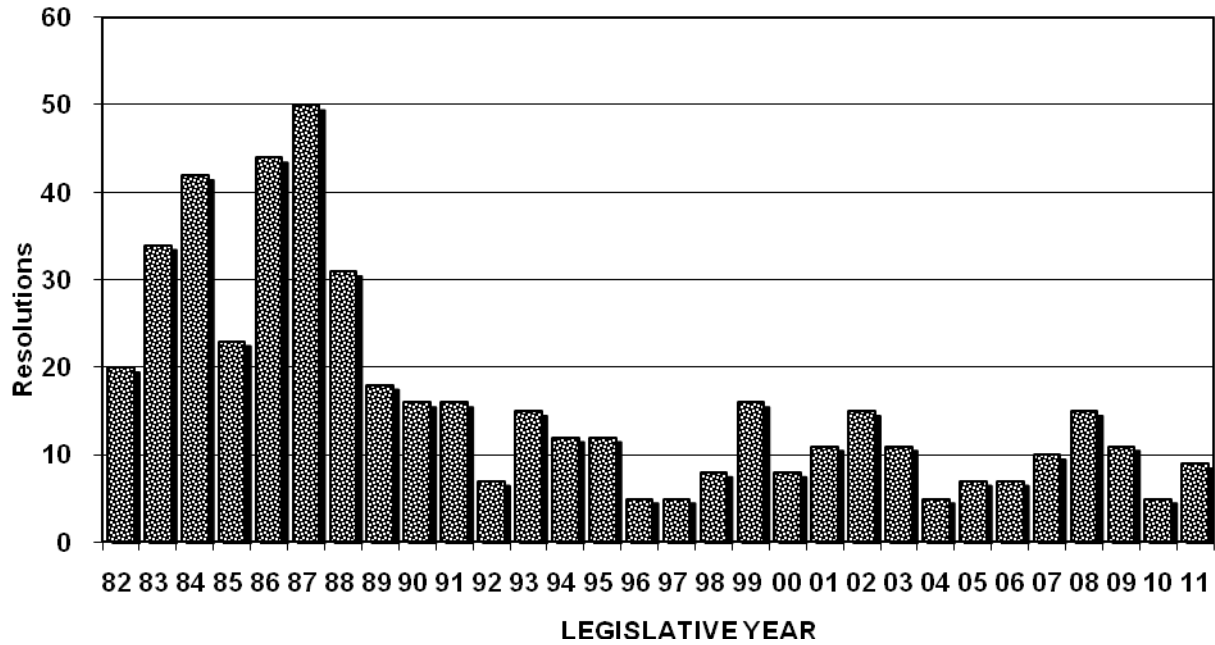
**TABLE O (continued)**

Session	House Joint Resolutions		Senate Joint Resolutions	
	(Introduced)	(Adopted)	(Introduced)	(Adopted)
1989	4	1	3	2
1990	4	3	3	1
1991	2	0	2	0
1992	3	0	5	0
1993	1	1	4	3
1994	3	1	2	0
1995	3	2	2	0
1996	7	1	2	1
1997	9	3	4	0
1998	8	2	4	1
1999	8	2	6	0
2000	5	0	5	1
2001	5	0	4	1
2002	10	3	5	0
2003	5	1	1	0
2004	3	1	5	0
2005	3	1	0	0
2006	5	1	2	0
2007	0	0	15	0
2008	5	3	2	1
2009	2	0	3	0
2010	6	1	7	1
2011	4	0	1	0

**GRAPH 35**

**SENATE CONCURRENT RESOLUTIONS**

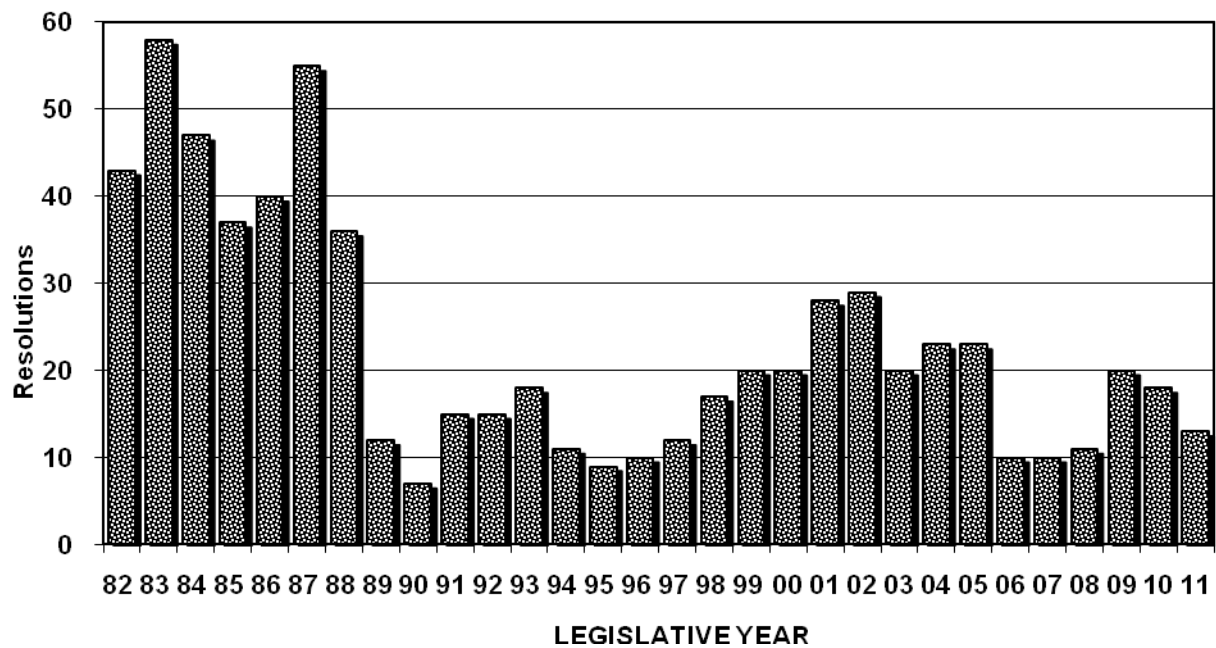
Introduced 1982-2011



**GRAPH 36**

**HOUSE CONCURRENT RESOLUTIONS**

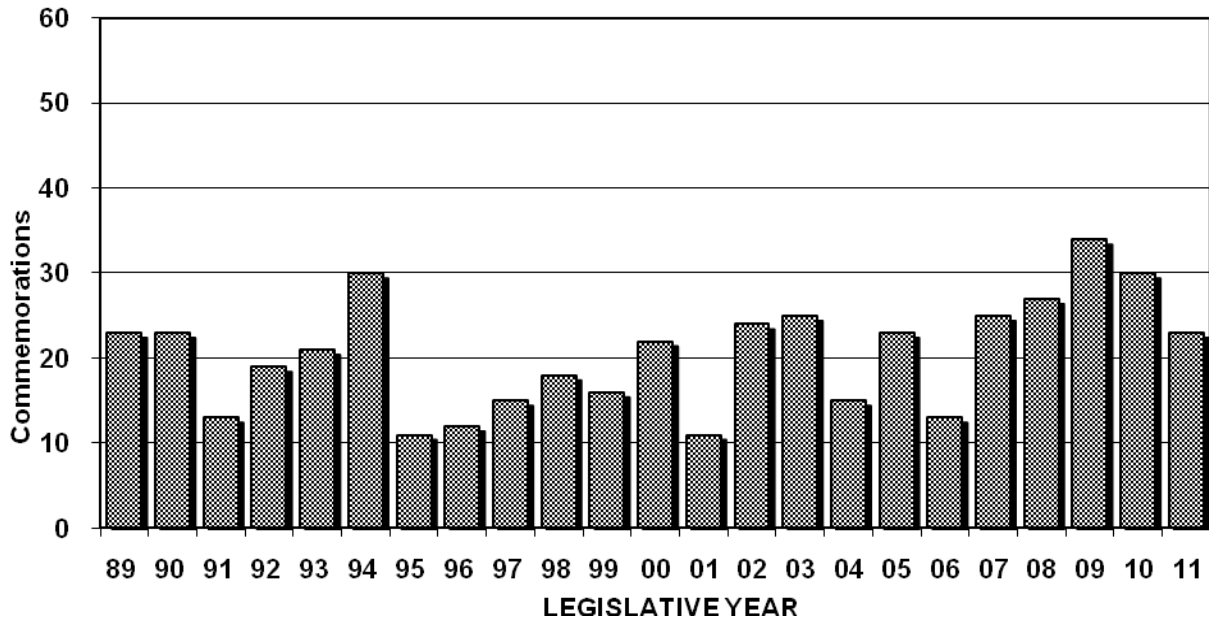
Introduced 1982-2011



**GRAPH 37**

**SENATE COMMEMORATIONS**

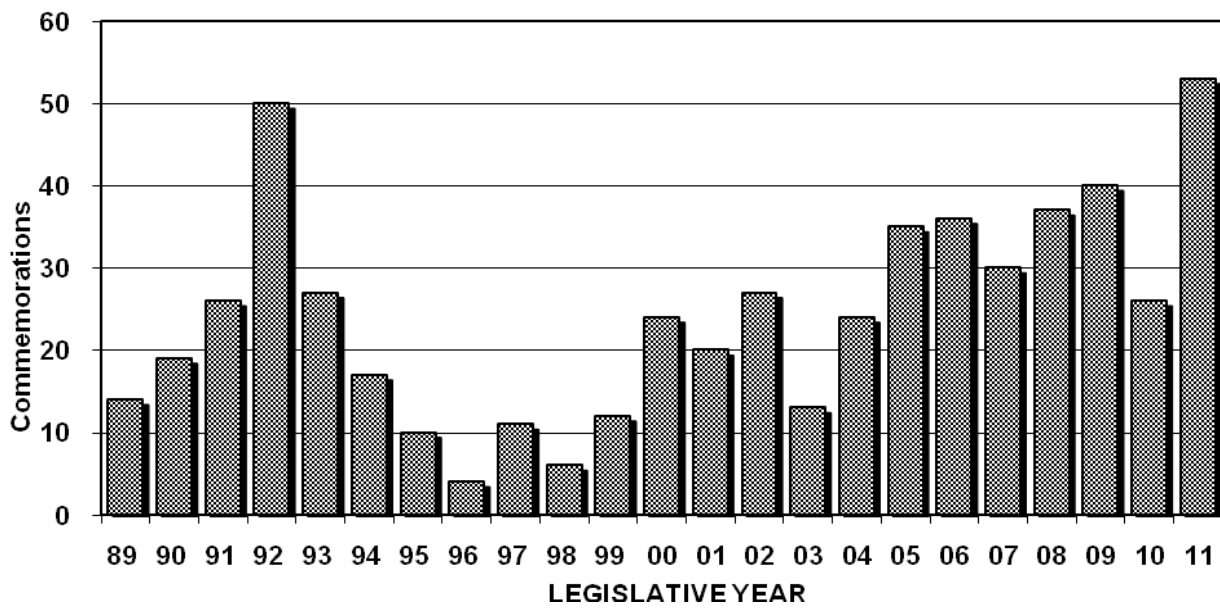
Adopted 1989-2011



**GRAPH 38**

**HOUSE COMMEMORATIONS**

Adopted 1989-2011



**TABLE P****DISPOSITION OF CONCURRENT RESOLUTIONS FOR YEARS 1921 THROUGH 2011**

<b>Session</b>	<b>House Concurrent Resolutions (Introduced) (Adopted)</b>		<b>Senate Concurrent Resolutions (Introduced) (Adopted)</b>	
1921	16	N/A	12	N/A
1923	29	10	29	10
1925	11	9	16	14
1927	4	4	23	14
1929	12	9	12	9
1931	23	9	20	15
1933	13	5	5	5
1935	16	8	12	5
1937	14	13	13	10
1939	15	12	12	9
1941	14	9	13	8
1943	9	6	12	6
1945	8	4	5	2
1947	7	6	7	6
1949	7	6	13	12
1951	13	11	15	8
1953	10	5	20	10
1955	13	1	6	2
1957	8	4	11	7
1959	9	2	15	2
1961	21	15	16	11
1963	18	12	14	9
1964	6	3	9	5
1965	26	15	13	8
1966	9	6	7	4
1967	12	10	17	13
1968	8	6	14	10
1969	24	18	11	8
1970	25	12	15	6
1971	30	23	17	11
1972	29	23	9	9
1973	33	28	9	6
1974	24	24	17	11
1975	20	17	20	15
1976	21	15	26	24
1977	21	18	18	15
1978	20	19	24	18
1979	19	17	27	22
1980	34	31	18	16
1981	33	28	31	28
1982	43	39	20	16
1983	58	56	34	27
1984	47	45	42	41
1985	37	33	23	21
1986	40	40	44	43
1987	55	52	50	46
1988	36	35	31	29
1989	12	9	18	15
1990	7	6	16	13
1991	15	12	16	12
1992	15	12	7	6
1993	18	15	15	8
1994	11	9	12	8



**TABLE P (continued)**

Session	House Concurrent Resolutions		Senate Concurrent Resolutions	
	(Introduced)	(Adopted)	(Introduced)	(Adopted)
1995	9	7	12	12
1996	10	7	5	1
1997	12	8	5	4
1998	17	13	8	5
1999	20	13	16	13
2000	20	15	8	6
2001	28	13	11	9
2002	29	20	15	15
2003	20	16	11	9
2004	23	17	5	3
2005	23	18	7	7
2006	10	10	7	5
2007	10	8	10	7
2008	11	11	15	11
2009	20	16	11	9
2010	18	14	5	5
2011	13	10	9	5

**TABLE Q****DISPOSITION OF COMMEMORATIONS FOR YEARS 1989 THROUGH 2011**

Session	House Commemorations		Senate Commemorations	
	(Introduced)	(Adopted)	(Introduced)	(Adopted)
1989	16	14	23	23
1990	19	19	23	23
1991	26	26	13	13
1992	50	50	19	19
1993	27	27	21	21
1994	17	17	30	30
1995	10	10	11	11
1996	4	4	12	12
1997	11	11	15	15
1998	6	6	18	18
1999	12	12	16	16
2000	24	24	22	22
2001	20	20	11	11
2002	27	27	24	24
2003	13	13	25	25
2004	24	24	15	15
2005	35	35	23	23
2006	36	36	13	13
2007	31	30	25	25
2008	37	37	27	27
2009	40	40	34	34
2010	26	26	30	30
2011	53	53	23	23



## SPECIAL SESSIONS

On October 15-17, 1889, the South Dakota Legislature met for the first time in Special Session to organize and elect officers. No bills or resolutions were addressed at that Special Session. Since then the Legislature has met in Special Session 23 times. The most recent Special Session was October 14, 2005. A summary of the number of bills, resolutions, and commemorations addressed by these Special Sessions follows.

**TABLE R**

### DISPOSITION OF TOTAL BILLS FOR ALL SPECIAL SESSIONS

<b>Session</b>	<b>Introduced</b>	<b>Delivered</b>	<b>Enacted</b>	<b>Percent Enacted</b>
February 8-11, 1916	6	3	3	50.0%
March 18-23, 1918	68	58	58	85.3%
December 2-4, 1919	0	0	0	-----
June 21-29, 1920	132	88	88*	66.7%
June 22-July 1, 1927	40	21	21	52.5%
July 31-August 5, 1933	59	20	20	33.9%
December 21-24, 1936	14	3	3	21.4%
July 10-12, 1944	7	5	5	71.4%
February 6-16, 1950	40	21	21	52.5%
May 18, 1981	5	1	1	20.0%
September 23-24, 1981	8	4	4	50.0%
May 2-3, 1984	2	1	1	50.0%
July 16, 1987	3	3	3	100.0%
October 3, 1991	6	2	2	33.3%
November 26, 1991	2	2	2	100.0%
May 25, 1993	5	4	4	80.0%
July 11-12, 1994	12	4	4	33.3%
September 9, 1994	25	18	16**	64.0%
April 14, 1997	2	1	1	50.0%
December 28-29, 2000	4	3	3	75.0%
October 23-24, 2001	2	2	2	100.0%
June 26-27, 2003	5	3	3	60.0%
October 14, 2005	<u>1</u>	<u>1</u>	<u>1</u>	<u>100.0%</u>
<b>TOTAL BILLS</b>	<b>448</b>	<b>268</b>	<b>266</b>	<b>59.4%</b>

\* line item veto

\*\* 2 vetoes and 2 line item vetoes

**TABLE S**  
**DISPOSITION OF SENATE BILLS FOR ALL SPECIAL SESSIONS**

<b>Session</b>	<b>Introduced</b>	<b>Delivered</b>	<b>Enacted</b>	<b>Percent Enacted</b>
February 8-11, 1916	2	2	2	100.0%
March 18-23, 1918	37	35	35	94.6%
December 2-4, 1919	0	0	0	-----
June 21-29, 1920	71	45	45*	63.4%
June 22-July 1, 1927	24	15	15	62.5%
July 31-August 5, 1933	22	9	9	40.9%
December 21-24, 1936	5	2	2	40.0%
July 10-12, 1944	4	3	3	75.0%
February 6-16, 1950	12	10	10	83.3%
May 18, 1981	2	1	1	50.0%
September 23-24, 1981	4	1	1	25.0%
May 2-3, 1984	1	1	1	100.0%
July 16, 1987	2	2	2	100.0%
October 3, 1991	3	2	2	66.7%
November 26, 1991	2	2	2	100.0%
May 25, 1993	3	3	3	100.0%
July 11-12, 1994	3	1	1	33.3%
September 9, 1994	22	18	16**	72.7%
April 14, 1997	1	0	0	0.0%
December 28-29, 2000	3	3	3	100.0%
October 23-24, 2001	1	1	1	100.0%
June 26-27, 2003	3	2	2	66.7%
October 14, 2005	0	0	0	----
	<u>227</u>	<u>158</u>	<u>156</u>	<u>68.7%</u>

**TABLE T**  
**DISPOSITION OF HOUSE BILLS FOR ALL SPECIAL SESSIONS**

<b>Session</b>	<b>Introduced</b>	<b>Delivered</b>	<b>Enacted</b>	<b>Percent Enacted</b>
February 8-11, 1916	4	1	1	25.0%
March 18-23, 1918	31	23	23	74.2%
December 2-4, 1919	0	0	0	-----
June 21-29, 1920	61	43	43	70.5%
June 22-July 1, 1927	16	6	6	37.5%
July 31-August 5, 1933	37	11	11	29.7%
December 21-24, 1936	9	1	1	11.1%
July 10-12, 1944	3	2	2	66.7%
February 6-16, 1950	28	11	11	39.3%
May 18, 1981	3	0	0	0.0%
September 23-24, 1981	4	3	3	75.0%
May 2-3, 1984	1	0	0	0.0%
July 16, 1987	1	1	1	100.0%
October 3, 1991	3	0	0	0.0%
November 26, 1991	0	0	0	-----
May 25, 1993	2	1	1	50.0%
July 11-12, 1994	9	3	3	33.3%
September 9, 1994	3	0	0	0.0%
April 14, 1997	1	1	1	100.0%
December 28-29, 2000	1	0	0	0.0%
October 23-24, 2001	1	1	1	100.0%
June 26-27, 2003	2	1	1	50.0%
October 14, 2005	1	1	1	100.0%
	<u>221</u>	<u>110</u>	<u>110</u>	<u>49.8%</u>
<b>TOTAL BILLS</b>	<b>448</b>	<b>268</b>	<b>266</b>	<b>59.4%</b>

\* line item veto

\*\* 2 vetoes and 2 line item vetoes

**TABLE U**

**DISPOSITION OF RESOLUTIONS AND COMMEMORATIONS FOR ALL SPECIAL SESSIONS**

<b>Session</b>	<b>House Joint Resolutions (Introduced) (Adopted)</b>		<b>Senate Joint Resolutions (Introduced) (Adopted)</b>	
February 8-11, 1916	1	0	2	0
March 18-23, 1918	2	2	7	6
December 2-4, 1919	1	1	0	0
June 21-29, 1920	2	1	3	2
June 22-July 1, 1927	0	0	1	1
July 31-August 5, 1933	2	0	0	0
December 21-24, 1936	1	0	0	0
July 10-12, 1944	0	0	0	0
February 6-16, 1950	0	0	1	1
May 18, 198	0	0	0	0
September 23-24, 1981	0	0	0	0
May 2-3, 1984	0	0	0	0
July 16, 1987	0	0	0	0
October 3, 1991	0	0	0	0
November 26, 1991	0	0	0	0
May 25, 1993	0	0	0	0
July 11-12, 1994	1	0	5	1
September 9, 1994	0	0	0	0
April 14, 1997	0	0	0	0
December 28-29, 2000	1	0	1	1
October 23-24, 2001	0	0	0	0
June 26-27, 2003	0	0	0	0
October 14, 2005	0	0	0	0

<b>Session</b>	<b>House Concurrent Resolutions (Introduced) (Adopted)</b>		<b>Senate Concurrent Resolutions (Introduced) (Adopted)</b>	
February 8-11, 1916	0	0	0	0
March 18-23, 1918	1	1	0	0
December 2-4, 1919	0	0	0	0
June 21-29, 1920	0	0	0	0
June 22-July 1, 1927	3	2	5	4
July 31-August 5, 1933	2	1	7	4
December 21-24, 1936	1	1	1	1
July 10-12, 1944	1	1	0	0
February 6-16, 1950	0	0	2	2
May 18, 198	0	0	1	0
September 23-24, 1981	0	0	0	0
May 2-3, 1984	0	0	0	0
July 16, 1987	0	0	1	0
October 3, 1991	0	0	0	0
November 26, 1991	0	0	0	0
May 25, 1993	1	1	1	1
July 11-12, 1994	1	0	2	0
September 9, 1994	0	0	0	0
April 14, 1997	0	0	2	2
December 28-29, 2000	0	0	0	0
October 23-24, 2001	0	0	0	0
June 26-27, 2003	0	0	0	0
October 14, 2005	0	0	0	0

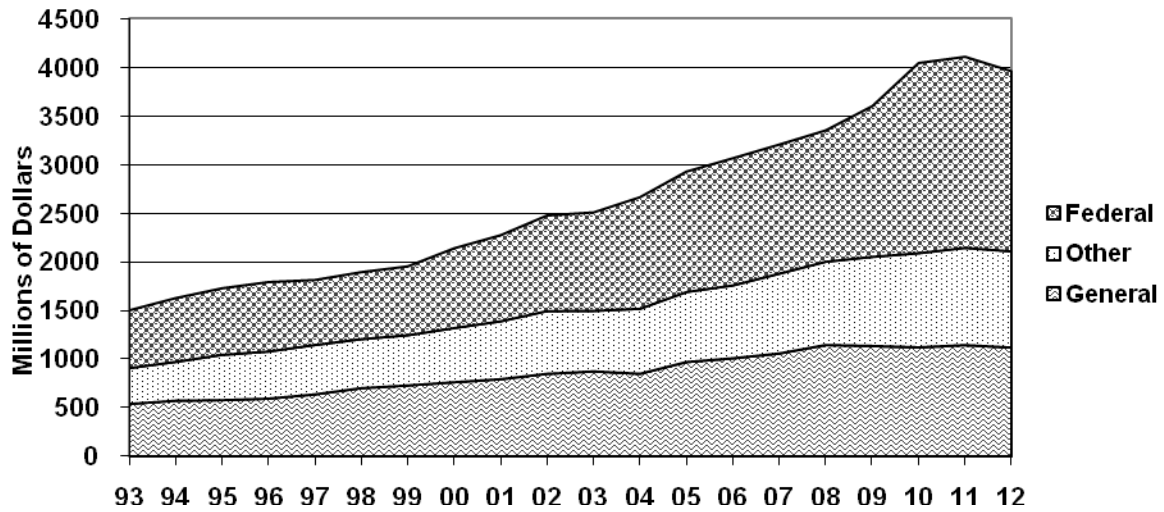
<b>Session</b>	<b>House Commemorations (Introduced) (Adopted)</b>		<b>Senate Commemorations (Introduced) (Adopted)</b>	
May 25, 1993	1	1	8	8



**GRAPH 39**

**GENERAL APPROPRIATIONS ACT**

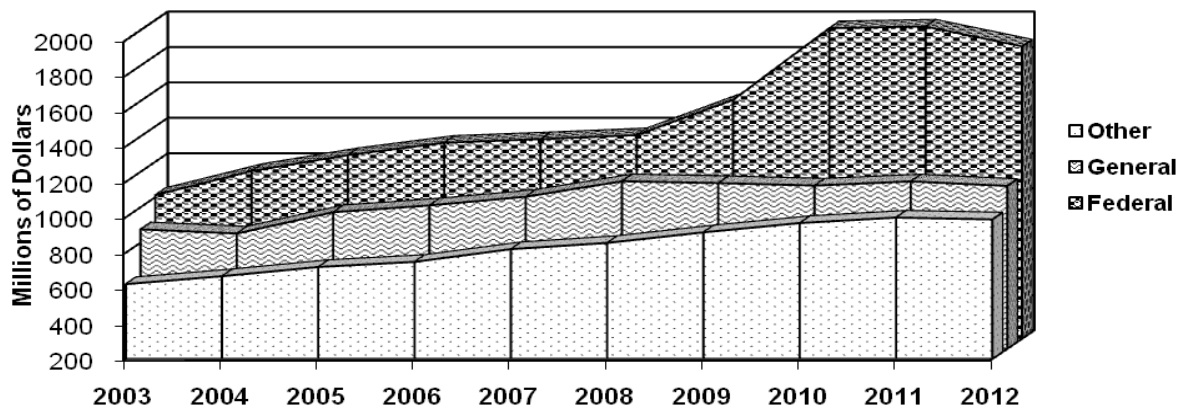
Funds Appropriated (FY1993-FY2012)



**GRAPH 40**

**GENERAL APPROPRIATIONS ACT**

Funds Appropriated (FY2003-FY2012)



## TABLE V

### GENERAL APPROPRIATIONS ACT GENERAL FUNDS APPROPRIATED (FY 1891-FY 1967)

<b>Fiscal Year</b>	<b>General Fund Appropriations</b>
-1891	\$ 438,708
1892-1893	745,059
1894-1895	834,469
1896-1897	744,262
1898-1899	763,882
1900-1901	879,650
1902-1903	1,017,170
1904-1905	1,265,450
1906-1907	1,050,575
1908-1909	1,639,344
1910-1911	1,906,314
1912-1913	2,199,597
1914-1915	2,753,410
1918-1919	3,400,300
1920-1921	5,100,976
1922-1923	6,394,929
1924-1925	7,110,522
1926-1927	7,953,925
1928-1929	6,776,270
1930-1931	7,290,854
1932-1933	6,851,843
1934-1935	5,044,013
1936-1937	5,102,501
1938-1939	5,596,817
1940-1941	5,670,070
1942-1943	6,039,180
1944-1945	7,020,940
1946-1947	7,901,170
1948-1949	10,335,475
1950-1951	14,440,615
1952-1953	17,972,740
1954-1955	21,479,406
1956-1957	24,924,600
1958-1959	33,163,627
1960-1961	33,594,102
1962-1963	40,889,600
1964-1965	49,588,678
1966-1967	108,858,642



**TABLE W**

**GENERAL APPROPRIATIONS ACT**  
**FUNDS APPROPRIATED (FY 1968-FY 2012)**

<b>Fiscal Year</b>	<b>General Funds</b>	<b>Other Funds</b>	<b>Federal Funds</b>	<b>Total</b>
1968	\$ 52,318,612	\$ 42,818,964	\$	\$ 95,137,576
1969	56,553,197	42,670,524		99,223,721
1970	75,377,063	49,483,418		124,860,481
1971	85,410,636	54,137,622		139,548,258
1972	100,987,933	46,774,067		147,762,000
1973	94,217,112	63,790,619		158,007,731
1974	105,404,780	71,055,716		176,460,496
1975	130,101,700	93,082,400		223,184,100
1976	148,747,700	125,828,300		274,576,000
1977	163,685,800	154,329,400		318,015,200
1978	153,862,799	111,177,955	191,925,281	456,966,035
1979	176,299,795	145,566,581	240,039,748	561,906,124
1980	147,504,470	170,063,909	253,637,640	571,206,019
1981	161,579,669	197,037,538	273,438,254	632,055,461
1982	172,055,756	208,445,374	324,559,669	705,060,799
1983	174,377,043	221,118,937	295,722,215	691,218,195
1984	178,149,248	222,855,037	308,617,414	709,621,699
1985	203,429,282	212,456,096	338,965,476	754,850,854
1986	218,843,480	223,998,297	377,829,496	820,671,273
1987	232,845,386	228,240,097	381,152,332	842,237,815
1988	235,122,964	238,721,107	396,346,231	870,190,302
1989	341,853,799	259,720,365	441,632,933	1,043,207,097
1990	400,539,825	300,891,200	456,939,983	1,158,371,008
1991	436,265,445	308,111,741	495,258,267	1,239,635,453
1992	497,950,803	340,385,723	549,288,025	1,387,624,551
1993	541,403,005	368,246,018	592,713,816	1,502,362,839
1994	574,337,802	399,060,914	655,065,237	1,628,463,953
1995	580,668,969	464,718,521	683,964,694	1,729,352,184
1996	596,260,942	483,608,506	713,544,777	1,793,414,225
1997	639,791,721	507,367,301	667,483,365	1,814,642,387
1998	703,876,993	502,892,326	688,495,268	1,895,264,587
1999	731,018,441	515,827,961	707,629,986	1,954,476,388
2000 <sup>b</sup>	764,532,081	556,321,464	819,370,030	2,140,223,575
2001 <sup>c</sup>	795,761,825	594,092,873	885,378,868	2,275,233,566
2002 <sup>d</sup>	850,885,481	644,360,962	982,560,790	2,477,807,233
2003	875,000,575	622,670,776	1,011,530,371	2,509,201,722
2004 <sup>e</sup>	851,277,150	667,333,054	1,146,903,515	2,665,513,719
2005 <sup>f</sup>	971,660,743	719,318,733	1,237,233,507	2,928,212,983
2006 <sup>g</sup>	1,009,980,027	748,493,050	1,307,008,887	3,065,481,964
2007 <sup>h</sup>	1,059,223,960	820,045,557	1,327,151,561	3,206,421,078
2008 <sup>i</sup>	1,146,522,479	855,452,511	1,349,933,464	3,351,908,454
2009 <sup>j</sup>	1,136,187,623	915,205,715	1,548,760,210	3,600,153,548
2010	1,127,819,469	938,670,146	1,853,072,976	3,919,562,591
2011	1,145,662,738	998,519,418	1,963,509,180	4,107,691,336
2012	1,120,088,080	988,027,568	1,851,059,794	3,959,175,442

<sup>a</sup>Includes federal funds in FY 1968 through FY 1977

<sup>b</sup>FY 2000 General Appropriations Act was amended by the 2000 Legislature to increase General Funds from \$750,858,528 to \$764,532,081, an increase of \$13,673,553.

<sup>c</sup>FY 2001 General Appropriations Act was amended by the 2001 Legislature to increase General Funds by \$1,351,120 from \$794,410,705 to \$795,761,825 and to increase Other Funds by \$2,600,000 from \$591,492,873 to \$594,092,873

<sup>d</sup>FY 2002 General Appropriations Act was amended by the 2002 Legislature to increase General Funds by \$1,487,000 from \$849,398,481 to \$850,885,481, to increase Other Funds by \$1,122,447 from \$643,238,515 to \$644,360,962, and to increase Federal Funds by \$587,000 from \$981,973,790 to \$982,560,790.

<sup>e</sup>FY 2004 General Appropriations Act was amended by the 2003 Legislature during its Special Session to increase appropriations by \$5,516,355 from all funds. This included \$500,000 from General Funds, \$500,000 from Other Funds, and \$4,515,355 from Federal Funds. The 2004 Legislature further amended the FY2004 General Appropriations Act by reducing appropriations by a net \$28,385,663 from all funds. This included a reduction of \$52,484,358 from General Funds and an increase of \$24,098,695 from Federal Funds.

<sup>f</sup>FY 2005 General Appropriations Act was amended by the 2005 Legislature by increasing appropriations by a net \$17,421,607 from all funds. This included \$633,125 from the General Funds, \$3,258,732 from Federal Funds, and \$13,529,750 from Other Funds. A total of \$3,105,043 from all funds was reappropriated from FY 2004 to FY 2005.

<sup>g</sup>FY 2006 General Appropriations Act was amended by the 2006 Legislature by increasing appropriations by \$9,562,768 from all funds. This included \$1,208,296 from General Funds, \$4,708,072 from Federal Funds, and \$3,646,400 from Other Funds.

<sup>h</sup>FY 2007 General Appropriations Act was amended by the 2007 Legislature by increasing appropriations by \$19,551,896 from all funds. This included \$1,114,638 from General Funds, \$2,017,458 from Federal Funds, and \$16,419,800 from Other Funds.

<sup>i</sup>FY 2008 General Appropriations Act was amended by the 2008 Legislature by increasing appropriations by \$11,824,064 from all funds. This included an increase of \$8,807,605 from General Funds, \$3,820,000 from Federal Funds, and a decrease of \$803,541 in Other Funds.

<sup>j</sup>FY 2009 General Appropriations Act was amended by the 2009 Legislature by increasing appropriations by \$51,445,062 from all funds. This included an increase of \$117,910,306 from federal stimulus funding, an increase of \$125,000 from non-stimulus federal funding; an increase of \$5,007,393 from Other Funds; and a decrease of \$71,597,637 from General Funds.

<sup>k</sup>FY2010 General Appropriations Act was amended in 2010 with an increase of \$124,278,690 from all funds. This included a decrease of \$5,515,119 from General Funds, an increase of \$100,921,999 from Federal Funds, and an increase of \$28,871,810 from Other Funds.

<sup>l</sup>FY 2011 General Appropriations Act was amended in 2011 with an increase of \$43,617,148 from all funds. This included a decrease 15,743,913 from General Funds, an increase of \$32,774,232 from Federal Funds, and an increase of \$26,586,829 from Other Funds.