

Statistical Comparison

The Eighty-Seventh Legislature

Spring 2012

Prepared By
South Dakota Legislative Research Council

FOREWORD

Each year the Legislative Research Council receives information requests for miscellaneous facts and figures regarding the Legislature and its committees. This document compiles some of those miscellaneous facts and figures for the Eighty-seventh Legislature and compares them with previous Legislatures.

If anyone has any suggestions on additional information that might be included in this document, please forward your comments to the Legislative Research Council.

David Ortbahn and Marjorie Pirnat of the Legislative Research Council staff compiled and organized the data for this document.

TABLE OF CONTENTS

Page

THE EIGHTY-SEVENTH LEGISLATURE

| | |
|--|---|
| The Senate | 1 |
| Senate Leadership | 1 |
| The House of Representatives | 2 |
| House of Representatives Leadership..... | 2 |
| Table A Number of Women Legislators (1923-2012)..... | 3 |
| Table B Political Control of South Dakota Governorship and Legislature (1901-2011)..... | 4 |

LEGISLATIVE COMMITTEES

| | |
|---|----|
| THE LEGISLATIVE COMMITTEES | 5 |
| Table C Total Number of Bills and Resolutions Referred to Committees for Years 2003-2012 | 6 |
| Graph 1 2012 Distribution of Bills to Senate Committees | 8 |
| Graph 2 2012 Senate Committee Workload..... | 8 |
| Graph 3 2012 Distribution of Bills to House Committees | 9 |
| Graph 4 2012 House Committee Workload..... | 9 |
| Table D Number of Standing Legislative Committees each Session for Years 1891-2012 | 10 |
| Graph 5 Senate Committees - Number each Legislative Session | 11 |
| Graph 6 House Committees - Number each Legislative Session | 11 |

DISPOSITION OF BILLS AND RESOLUTIONS

| | |
|---|----|
| 2012 DISPOSITION OF BILLS AND RESOLUTIONS | 13 |
| Table E Disposition of Senate Bills, 2012 | 15 |
| Graph 7 Disposition of Senate Bills, 2012 | 15 |
| Table F Disposition of House Bills, 2012 | 16 |
| Graph 8 Disposition of House Bills, 2012 | 16 |
| Graph 9 Disposition of Senate Bills, 2003-2012 | 17 |
| Graph 10 Disposition of House Bills, 2003-2012 | 17 |
| Table G Disposition of Senate Bills for Years 1890-2012..... | 18 |
| Table H Disposition of House Bills for Years 1890-2012..... | 20 |
| Graph 11 Disposition of Legislative Bills, 2003-2012..... | 22 |
| Graph 12 Vetoes - 1983-2012..... | 22 |
| Graph 13 Senate Joint Resolutions Introduced, 1983-2012 | 23 |
| Graph 14 House Joint Resolutions Introduced, 1983-2012 | 23 |
| Table I Disposition of all Legislative Bills for Years 1890-2012..... | 24 |
| Table J Bills Vetoed by the Governor for Years 1890-2012..... | 26 |
| Table K Disposition of Joint Resolutions for Years 1909-2012 | 28 |
| Graph 15 Senate Concurrent Resolutions Introduced, 1983-2012 | 30 |
| Graph 16 House Concurrent Resolutions Introduced, 1983-2012 | 30 |
| Graph 17 Senate Commemorations Adopted, 1989-2012..... | 31 |
| Graph 18 House Commemorations Adopted, 1989-2012..... | 31 |
| Table L Disposition of Concurrent Resolutions for Years 1921-2012 | 32 |
| Table M Disposition of Commemorations for Years 1989-2012 | 33 |

SPECIAL SESSIONS

| | |
|--|----|
| SPECIAL SESSIONS | 35 |
| Table N Disposition of Total Bills for all Special Sessions..... | 35 |
| Table O Disposition of Senate Bills for all Special Sessions..... | 36 |
| Table P Disposition of House Bills for all Special Sessions..... | 37 |
| Table Q Disposition of Resolutions and Commemorations for all Special Sessions..... | 38 |

GENERAL APPROPRIATIONS ACT

| | |
|---|----|
| Graph 19 General Appropriations Act - Funds Appropriated (FY 1994 - FY 2013)..... | 39 |
| Graph 20 General Appropriations Act - Funds Appropriated (FY 2004 - FY 2013)..... | 39 |
| Table R General Appropriations Act - General Funds Appropriated (FY 1891 - FY 1967)..... | 40 |
| Table S General Appropriations Act - Funds Appropriated (FY 1968 - FY 2013)..... | 41 |

THE SENATE

There was one change in membership from the 2011 to the 2012 Senate. Senator Cooper Garnos resigned his position on October 27, 2011. Senator Garnos had served in the Senate for five years and in the House of Representatives for eight years. Representative Kent Juhnke was appointed by Governor Dennis Daugaard to serve the remainder of Senator Garnos's term.

Senate Leadership

The **Senate** leadership for the Eighty-seventh Legislature was as follows:

President:

Lt. Governor, Matt Michels, Yankton

President Pro Tempore:

Bob Gray, Pierre

Majority Leader:

Russell Olson, Wentworth

Assistant Majority Leader:

Corey Brown, Gettysburg

Majority Whips:

Shantel Krebs, Renner

Tim Rave, Baltic

Craig Tieszen, Rapid City

Minority Leader:

Jason Frerichs, Wilmot

Assistant Minority Leader:

Jim Hundstad, Bath

Minority Whip:

Jim Bradford, Pine Ridge

THE HOUSE OF REPRESENTATIVES

There was one change in membership from the 2011 to the 2012 House of Representatives. Representative Kent Juhnke resigned his position on November 17, 2011, to accept an appointment to fill the vacancy caused by the resignation of Senator Cooper Garnos. Representative Juhnke had served in the House of Representatives for 11 years. David Scott was appointed by Governor Dennis Daugaard on November 17, 2011, to serve the remainder of Representative Juhnke's term.

House of Representatives Leadership

The **House of Representatives** leadership for the Eighty-seventh Legislature was as follows:

Speaker:

Val Rausch, Big Stone City

Speaker Pro Tempore:

Brian Gosch, Rapid City

Majority Leader:

David Lust, Rapid City

Assistant Majority Leader:

Justin Cronin, Gettysburg

Majority Whips:

Charles Hoffman, Eureka
Nick Moser, Yankton
Jacqueline Sly, Rapid City
Hal Wick, Sioux Falls

Minority Leader:

Bernie Hunhoff, Yankton

Assistant Minority Leader:

Mitch Fargen, Flandreau

Minority Whips:

Suzy Blake, Sioux Falls
Peggy Gibson, Huron

TABLE A
NUMBER OF WOMEN LEGISLATORS

| Year | House | Senate |
|-------------|--------------|---------------|
| 1923 | 1 | 0 |
| 1925 | 4 | 0 |
| 1927 | 1 | 0 |
| 1929 | 0 | 0 |
| 1931 | 0 | 0 |
| 1933 | 1 | 0 |
| 1935 | 0 | 0 |
| 1937 | 0 | 1 |
| 1939 | 1 | 0 |
| 1941 | 0 | 0 |
| 1943 | 0 | 0 |
| 1945 | 0 | 0 |
| 1947 | 0 | 0 |
| 1949 | 0 | 0 |
| 1951 | 1 | 0 |
| 1953 | 3 | 0 |
| 1955 | 2 | 0 |
| 1957 | 1 | 0 |
| 1959 | 2 | 0 |
| 1961 | 3 | 0 |
| 1963 | 2 | 0 |
| 1964 | 2 | 0 |
| 1965 | 3 | 0 |
| 1967-68 | 2 | 0 |
| 1969-70 | 2 | 0 |
| 1971-72 | 3 | 0 |
| 1973-74 | 4 | 1 |
| 1975-76 | 7 | 5 |
| 1977-78 | 8 | 2 |
| 1979-80 | 6 | 3 |
| 1981-82 | 8 | 3 |
| 1983-84 | 12 | 3 |
| 1985-86 | 11 | 4 |
| 1987 | 16 | 5 |
| 1988 | 17 | 5 |
| 1989 | 13 | 8 |
| 1990 | 13 | 7 |
| 1991-92 | 15 | 11 |
| 1993-94 | 14 | 7 |
| 1995 | 14 | 5 |
| 1996 | 14 | 6 |
| 1997-98 | 13 | 5 |
| 1999 | 9 | 5 |
| 2000 | 10 | 5 |
| 2001 | 11 | 5 |
| 2002 | 11 | 6 |
| 2003-04 | 13 | 4 |
| 2005-06 | 14 | 3 |
| 2007-08 | 13 | 5 |
| 2009 | 13 | 7 |
| 2010 | 14 | 7 |
| 2011-12 | 14 | 7 |

NOTE: *First woman legislator: Representative Gladys Pyle (Beadle) (1923)*
First woman senator: Senator Jesse Saunders (Pennington) (1937)

TABLE B

POLITICAL CONTROL OF S.D. GOVERNORSHIP & LEGISLATURE (1901-2011)

| YEAR | GOVERNOR | | SENATE | | | HOUSE | | |
|------|----------|------|--------|------|--------|-------|------|--------|
| | REP. | DEM. | REP. | DEM. | Others | REP. | DEM. | Others |
| 1901 | x | | 39 | 1 | 5 | 79 | 5 | 3 |
| 1903 | x | | 41 | 3 | 1 | 76 | 6 | 5 |
| 1905 | x | | 41 | 2 | 2 | 87 | 2 | |
| 1907 | x | | 38 | 7 | | 80 | 9 | |
| 1909 | x | | 39 | 6 | | 95 | 9 | |
| 1911 | x | | 33 | 11 | 1 | 99 | 4 | 1 |
| 1913 | x | | 33 | 11 | 1 | 88 | 14 | 1 |
| 1915 | x | | 35 | 10 | | 85 | 18 | |
| 1917 | x | | 35 | 10 | | 91 | 12 | |
| 1919 | x | | 43 | 2 | | 90 | 10 | 3 |
| 1921 | x | | 44 | 1 | | 94 | 4 | 5 |
| 1923 | x | | 34 | 9 | 2 | 84 | 10 | 9 |
| 1925 | x | | 34 | 10 | 1 | 85 | 11 | 7 |
| 1927 | | x | 29 | 16 | | 81 | 21 | 1 |
| 1929 | | x | 33 | 12 | | 83 | 20 | |
| 1931 | x | | 31 | 14 | | 79 | 24 | |
| 1933 | | x | 16 | 29 | | 33 | 70 | |
| 1935 | | x | 14 | 31 | | 40 | 63 | |
| 1937 | x | | 22 | 23 | | 66 | 37 | |
| 1939 | x | | 30 | 5 | | 62 | 13 | |
| 1941 | x | | 31 | 4 | | 65 | 10 | |
| 1943 | x | | 31 | 4 | | 69 | 6 | |
| 1945 | x | | 35 | 0 | | 72 | 3 | |
| 1947 | x | | 35 | 0 | | 71 | 4 | |
| 1949 | x | | 27 | 8 | | 64 | 11 | |
| 1951 | x | | 29 | 6 | | 66 | 9 | |
| 1953 | x | | 35 | 0 | | 73 | 2 | |
| 1955 | x | | 29 | 6 | | 57 | 18 | |
| 1957 | x | | 18 | 17 | | 48 | 27 | |
| 1959 | | x | 15 | 20 | | 43 | 32 | |
| 1961 | x | | 23 | 12 | | 57 | 18 | |
| 1963 | x | | 26 | 9 | | 58 | 17 | |
| 1965 | x | | 18 | 16 | 1 | 45 | 30 | |
| 1967 | x | | 29 | 6 | | 64 | 11 | |
| 1969 | x | | 27 | 8 | | 59 | 16 | |
| 1971 | | x | 24 | 11 | | 46 | 29 | |
| 1973 | | x | 17 | 18 | | 35 | 35 | |
| 1975 | | x | 16 | 19 | | 37 | 33 | |
| 1977 | | x | 24 | 11 | | 48 | 22 | |
| 1979 | x | | 24 | 11 | | 48 | 22 | |
| 1981 | x | | 25 | 10 | | 49 | 21 | |
| 1983 | x | | 26 | 9 | | 54 | 16 | |
| 1985 | x | | 25 | 10 | | 57 | 13 | |
| 1987 | x | | 24 | 11 | | 48 | 22 | |
| 1988 | x | | 25 | 10 | | 48 | 22 | |
| 1989 | x | | 20 | 15 | | 46 | 24 | |
| 1991 | x | | 18 | 17 | | 45 | 25 | |
| 1993 | x | | 15 | 20 | | 42 | 28 | |
| 1995 | x | | 19 | 16 | | 46 | 24 | |
| 1997 | x | | 22 | 13 | | 48 | 22 | |
| 1999 | x | | 22 | 13 | | 51 | 19 | |
| 2001 | x | | 24 | 11 | | 50 | 20 | |
| 2003 | x | | 26 | 9 | | 49 | 21 | |
| 2005 | x | | 25 | 10 | | 51 | 19 | |
| 2007 | x | | 20 | 15 | | 50 | 20 | |
| 2009 | x | | 21 | 14 | | 46 | 24 | |
| 2011 | x | | 30 | 5 | | 50 | 19 | 1 |

THE LEGISLATIVE COMMITTEES

The 2012 Legislature was divided into 13 standing committees. There were no changes from the 2011 Legislature. The committees and their membership were as follows:

| | Senate | House |
|--------------------------------------|---------------|--------------|
| 1. Agriculture and Natural Resources | 9 | 13 |
| 2. Appropriations | 7 | 9 |
| 3. Commerce | 7 | 13 |
| 4. Education | 7 | 15 |
| 5. Government Operations and Audit | 5 | 5 |
| 6. Health and Human Services | 7 | 13 |
| 7. Judiciary | 7 | 13 |
| 8. Legislative Procedure | 7 | 7 |
| 9. Local Government | 7 | 13 |
| 10. Retirement Laws | 5 | 5 |
| 11. State Affairs | 9 | 13 |
| 12. Taxation | 9 | 15 |
| 13. Transportation | 7 | 13 |

The workload of the various committees in 2012 and over the past 9 years is summarized in Table C on pages 6 and 7.

The number of standing committees each legislative session since 1891 is summarized in Table D on page 10.

TABLE C

**TOTAL NUMBER OF BILLS AND RESOLUTIONS REFERRED TO COMMITTEES FOR
YEARS 2003 THROUGH 2012**

SENATE

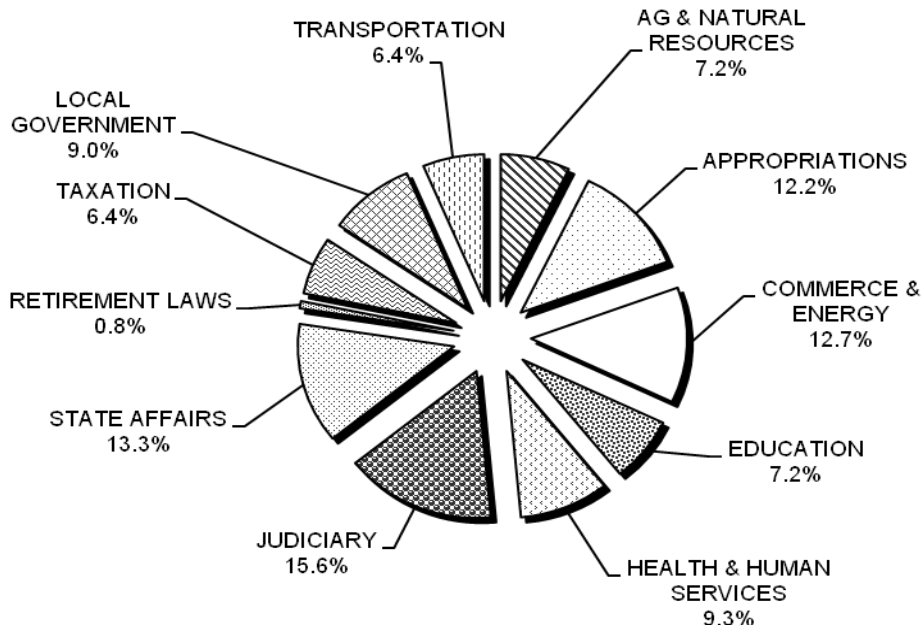
| COMMITTEE | 2003 | 2004 | 2005 | 2006 | 2007 | 2008 | 2009 | 2010 | 2011 | 2012 |
|--|-------------|-------------|-------------|-------------|-------------|-------------|-------------|-------------|-------------|-------------|
| AGRICULTURE & NATURAL RESOURCES | 33 | 26 | 33 | 29 | 38 | 32 | 29 | 23 | 18 | 27 |
| APPROPRIATIONS | 25 | 52 | 31 | 62 | 52 | 60 | 41 | 36 | 31 | 46 |
| COMMERCE | 56 | 63 | 63 | 49 | 51 | 60 | 53 | 48 | 51 | 48 |
| EDUCATION | 30 | 27 | 42 | 38 | 46 | 49 | 37 | 34 | 32 | 27 |
| HEALTH & HUMAN SERVICES | 27 | 33 | 29 | 23 | 44 | 24 | 30 | 24 | 28 | 35 |
| GOVERNMENT OPERATIONS & AUDIT | 1 | 0 | 2 | 2 | 8 | 5 | 0 | 1 | 0 | 0 |
| JUDICIARY | 49 | 68 | 60 | 65 | 80 | 66 | 56 | 58 | 53 | 59 |
| LEGISLATIVE PROCEDURE | 0 | 0 | 0 | 1 | 0 | 0 | 0 | 0 | 0 | 0 |
| LOCAL GOVERNMENT | 42 | 27 | 38 | 24 | 33 | 20 | 28 | 30 | 45 | 34 |
| RETIREMENT LAWS | 5 | 10 | 5 | 7 | 0 | 7 | 2 | 4 | 3 | 3 |
| STATE AFFAIRS | 64 | 68 | 48 | 55 | 62 | 51 | 65 | 56 | 44 | 50 |
| TAXATION | 41 | 27 | 37 | 39 | 32 | 26 | 24 | 27 | 15 | 24 |
| TRANSPORTATION | <u>24</u> | <u>33</u> | <u>32</u> | <u>24</u> | <u>19</u> | <u>30</u> | <u>28</u> | <u>28</u> | <u>19</u> | <u>24</u> |
| TOTAL By Year | 397 | 434 | 420 | 418 | 465 | 430 | 393 | 369 | 339 | 377 |

TABLE C (continued)**HOUSE OF REPRESENTATIVES**

| COMMITTEE | 2003 | 2004 | 2005 | 2006 | 2007 | 2008 | 2009 | 2010 | 2011 | 2012 |
|--|-------------|-------------|-------------|-------------|-------------|-------------|-------------|-------------|-------------|-------------|
| AGRICULTURE & NATURAL RESOURCES | 26 | 29 | 27 | 28 | 33 | 37 | 34 | 30 | 29 | 36 |
| APPROPRIATIONS | 23 | 44 | 39 | 50 | 55 | 55 | 49 | 43 | 42 | 50 |
| COMMERCE | 54 | 55 | 50 | 48 | 54 | 67 | 73 | 51 | 50 | 46 |
| EDUCATION | 43 | 36 | 34 | 30 | 54 | 56 | 45 | 35 | 26 | 27 |
| HEALTH & HUMAN SERVICES | 30 | 36 | 31 | 28 | 33 | 20 | 22 | 25 | 27 | 31 |
| GOVERNMENT OPERATIONS & AUDIT | 2 | 0 | 3 | 2 | 5 | 6 | 0 | 1 | 0 | 0 |
| JUDICIARY | 55 | 75 | 64 | 66 | 90 | 75 | 70 | 65 | 66 | 76 |
| LEGISLATIVE PROCEDURE | 0 | 0 | 0 | 0 | 0 | 0 | 0 | 0 | 0 | 0 |
| LOCAL GOVERNMENT | 46 | 34 | 29 | 32 | 44 | 34 | 40 | 40 | 48 | 38 |
| RETIREMENT LAWS | 5 | 9 | 5 | 6 | 0 | 9 | 3 | 4 | 3 | 3 |
| STATE AFFAIRS | 83 | 77 | 62 | 53 | 57 | 67 | 68 | 65 | 68 | 75 |
| TAXATION | 39 | 35 | 40 | 35 | 30 | 22 | 34 | 37 | 22 | 27 |
| TRANSPORTATION | <u>29</u> | <u>40</u> | <u>31</u> | <u>25</u> | <u>24</u> | <u>31</u> | <u>27</u> | <u>30</u> | <u>19</u> | <u>26</u> |
| TOTAL By Year | 435 | 470 | 415 | 403 | 479 | 479 | 465 | 426 | 400 | 435 |

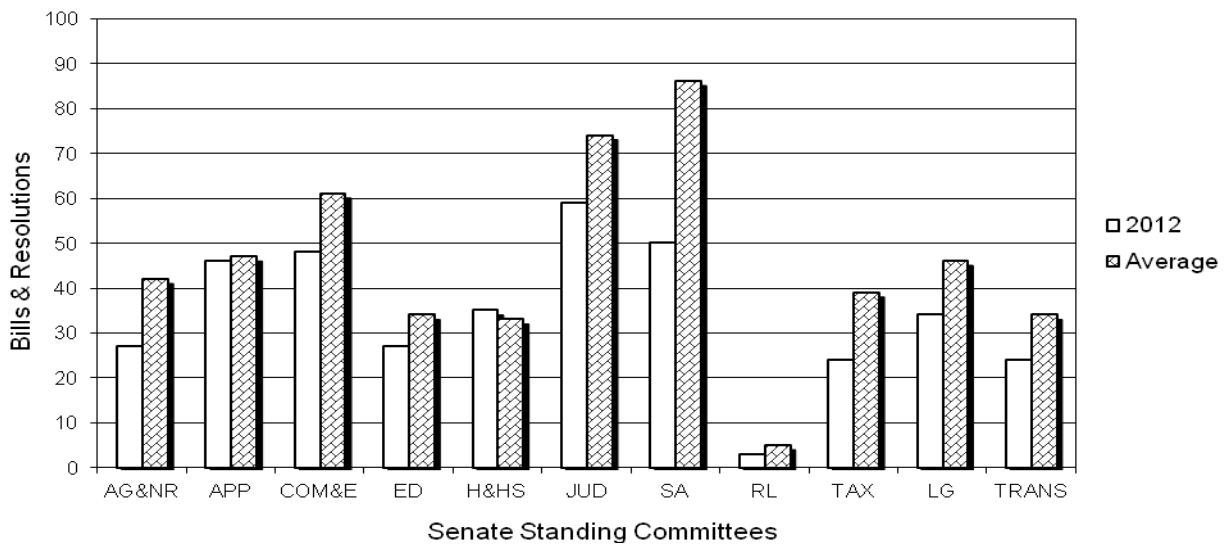
GRAPH 1

2012 DISTRIBUTION OF BILLS To Senate Committees



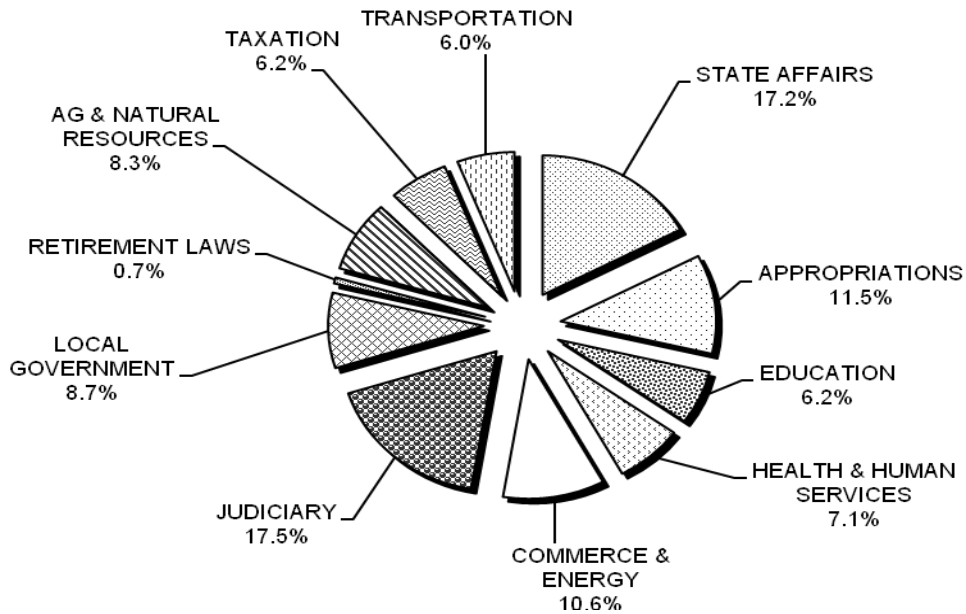
GRAPH 2

2012 SENATE COMMITTEE WORKLOAD Compared to Average Year



GRAPH 3

**2012 DISTRIBUTION OF BILLS
To House Committees**



GRAPH 4

**2012 HOUSE COMMITTEE WORKLOAD
Compared to Average Year**

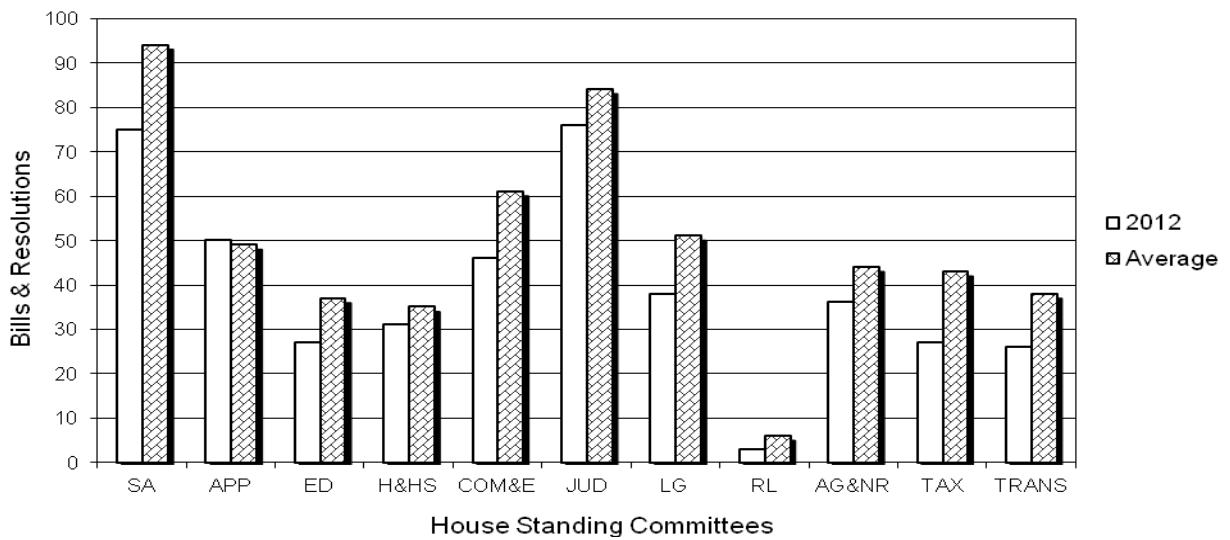


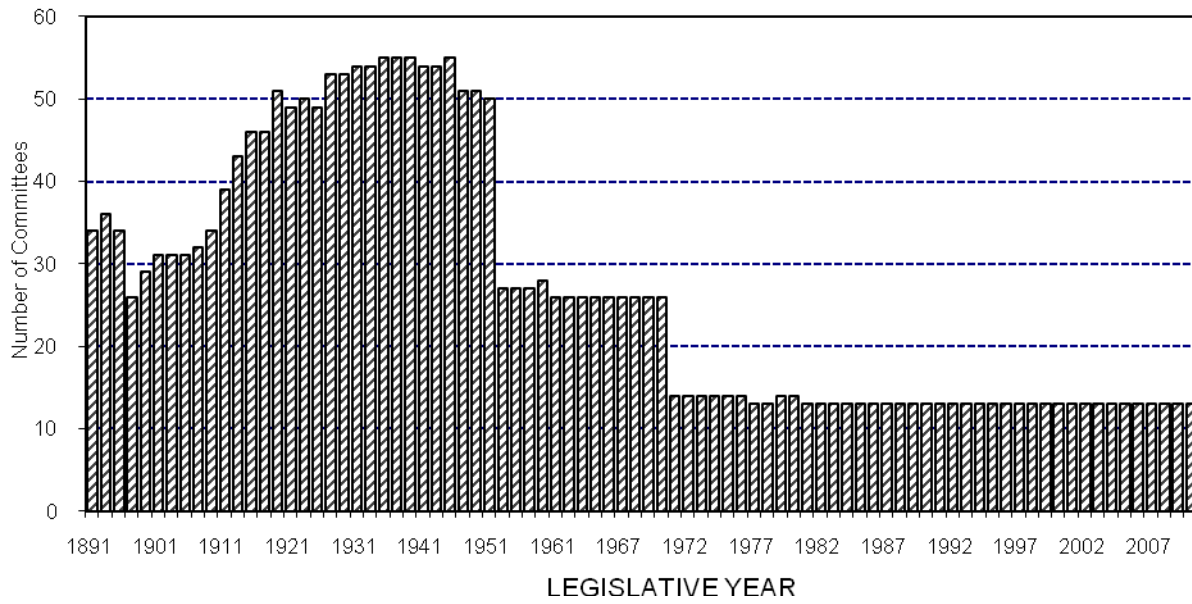
TABLE D

**NUMBER OF STANDING LEGISLATIVE COMMITTEES EACH SESSION
FOR YEARS 1891 THROUGH 2012**

| YEAR | SENATE | HOUSE | YEAR | SENATE | HOUSE |
|-------------|---------------|--------------|-------------|---------------|--------------|
| 1891 | 34 | 34 | 1972 | 14 | 14 |
| 1893 | 36 | 32 | 1973 | 14 | 14 |
| 1895 | 34 | 35 | 1974 | 14 | 14 |
| 1897 | 26 | 33 | 1975 | 14 | 14 |
| 1899 | 29 | 33 | 1976 | 14 | 14 |
| 1901 | 31 | 38 | 1977 | 13 | 13 |
| 1903 | 31 | 39 | 1978 | 13 | 13 |
| 1905 | 31 | 42 | 1979 | 14 | 14 |
| 1907 | 32 | 42 | 1980 | 14 | 14 |
| 1909 | 34 | 43 | 1981 | 13 | 13 |
| 1911 | 39 | 47 | 1982 | 13 | 13 |
| 1913 | 43 | 50 | 1983 | 13 | 13 |
| 1915 | 46 | 49 | 1984 | 13 | 13 |
| 1917 | 46 | 50 | 1985 | 13 | 13 |
| 1919 | 51 | 51 | 1986 | 13 | 13 |
| 1921 | 49 | 55 | 1987 | 13 | 13 |
| 1923 | 50 | 54 | 1988 | 13 | 13 |
| 1925 | 49 | 56 | 1989 | 13 | 13 |
| 1927 | 53 | 56 | 1990 | 13 | 13 |
| 1929 | 53 | 59 | 1991 | 13 | 13 |
| 1931 | 54 | 59 | 1992 | 13 | 13 |
| 1933 | 54 | 59 | 1993 | 13 | 13 |
| 1935 | 55 | 59 | 1994 | 13 | 13 |
| 1937 | 55 | 59 | 1995 | 13 | 13 |
| 1939 | 55 | 58 | 1996 | 13 | 13 |
| 1941 | 54 | 58 | 1997 | 13 | 13 |
| 1943 | 54 | 54 | 1998 | 13 | 13 |
| 1945 | 55 | 55 | 1999 | 13 | 13 |
| 1947 | 51 | 51 | 2000 | 13 | 13 |
| 1949 | 51 | 51 | 2001 | 13 | 13 |
| 1951 | 50 | 51 | 2002 | 13 | 13 |
| 1953 | 27 | 51 | 2003 | 13 | 13 |
| 1955 | 27 | 50 | 2004 | 13 | 13 |
| 1957 | 27 | 50 | 2005 | 13 | 13 |
| 1959 | 28 | 50 | 2006 | 13 | 13 |
| 1961 | 26 | 27 | 2007 | 13 | 13 |
| 1963 | 26 | 25 | 2008 | 13 | 13 |
| 1964 | 26 | 25 | 2009 | 13 | 13 |
| 1965 | 26 | 26 | 2010 | 13 | 13 |
| 1966 | 26 | 27 | 2011 | 13 | 13 |
| 1967 | 26 | 27 | 2012 | 13 | 13 |
| 1968 | 26 | 27 | | | |
| 1969 | 26 | 27 | | | |
| 1970 | 26 | 27 | | | |
| 1971 | 14 | 14 | | | |

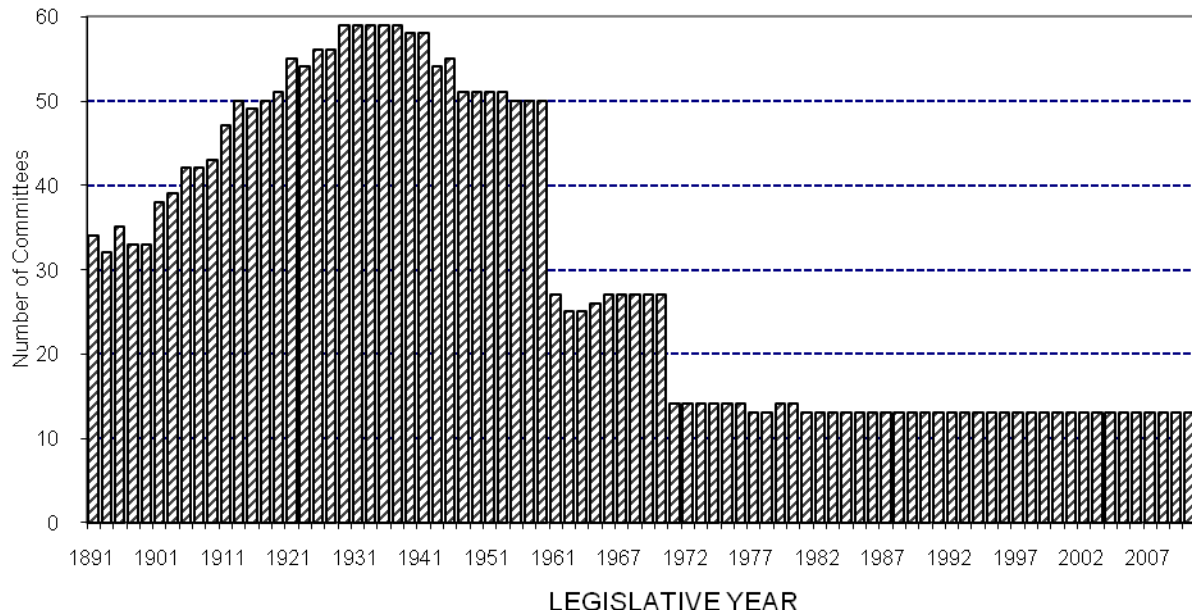
GRAPH 5

SENATE COMMITTEES Number Each Legislative Session



GRAPH 6

HOUSE COMMITTEES Number Each Legislative Session



2012 DISPOSITION OF BILLS AND RESOLUTIONS

During the 2012 Legislative Session, 471 bills were introduced. This number was 13 more than in 2011 and was 123 fewer than the average number of bills previously introduced in a 35-day session. The highest number of bills ever introduced in a legislative session was in 1957 when 929 bills were introduced. The lowest number of bills ever introduced was 432 in 1964.

There were 197 Senate bills introduced. The number of Senate bills introduced was five fewer than in 2011 and was 57 fewer than the average number of Senate bills previously introduced in a 35-day session. The record for the highest number of Senate bills introduced in a legislative session is 405 which was set in 1913. The record for the fewest Senate bills was set in 2002 when only 187 Senate bills were introduced.

Two hundred seventy-four House bills were introduced. The number of House bills was 18 more than in 2011 and was 66 fewer than the average number of bills previously introduced in a 35-day session. The record for the highest number of House bills introduced in a legislative session occurred in 1957 when 576 were introduced. The fewest number of House bills ever introduced occurred in 1905 when only 212 were introduced.

Of all the bills introduced in 2012, 256 passed both houses of the Legislature and were delivered to the Governor. The Governor vetoed four bills and one of those vetoes was overridden by the Legislature. One bill was returned by the Governor for style and form changes and those changes were approved by the Legislature. The Governor also issued a line item veto of a special appropriations bill and that veto was approved by the Legislature. The 253 bills that became law were 81 fewer than the average number of bills previously enacted in a 35-day session and were 27 more than became law in 2011. The most bills ever enacted in a single session occurred in 1957 when 505 bills were enacted. The fewest bills were enacted in 1897 when only 104 bills became law.

In 2012, 53.7 percent of the bills introduced were enacted. This was below the previous average of 56.3 percent for a 35-day session. This was slightly higher than in 2011 when 49.3 percent was enacted. The highest percentage of bills ever enacted in a single session

occurred in 1947 when 73.1 percent of that year's bills were enacted. The lowest percentage of bills ever enacted in a single session occurred in 1897 when only 18.6 percent of the bills were enacted. In 2012, 48.5 percent of the House bills introduced were enacted. This was lower than the previous average percentage of House bills enacted in a 35-day session of 56.1 percent. Also, 60.9 percent of the Senate bills introduced were enacted. This was slightly above the previous average percentage of Senate bills enacted in a 35-day session of 56.5 percent.

The number of bills vetoed in 2012 (4) was four fewer than the average number of bills vetoed each year. Only in the years 1933 and 1955 were no bills vetoed by the Governor. The most bills vetoed occurred in 1980 when 30 bills were vetoed.

The number of concurrent resolutions introduced in 2012 was 24. This was two more than was introduced in 2011. Eighteen of the concurrent resolutions introduced in 2012 were adopted.

There were ten House joint resolutions and no Senate joint resolutions introduced in 2011. Four of the House joint resolutions were adopted. The number of joint resolutions introduced was five more than introduced in 2011.

There were 64 House commemorations and 29 Senate commemorations introduced and approved in the 2012 Legislature. Since the Legislature started issuing commemorations in 1989, there has been an average of 21 Senate commemorations and 25 House commemorations each session.

TABLE E

**DISPOSITION OF SENATE BILLS
2012**

| | |
|----------------------------|------------|
| Failed in Senate committee | 53 |
| Failed on Senate floor | 10 |
| Failed in House committee | 7 |
| Failed on House floor | 3 |
| Failed to concur | 3 |
| Vetoed | 1 |
| Enacted | <u>120</u> |
| Total | 197 |

GRAPH 7

**DISPOSITION OF SENATE BILLS
2012**

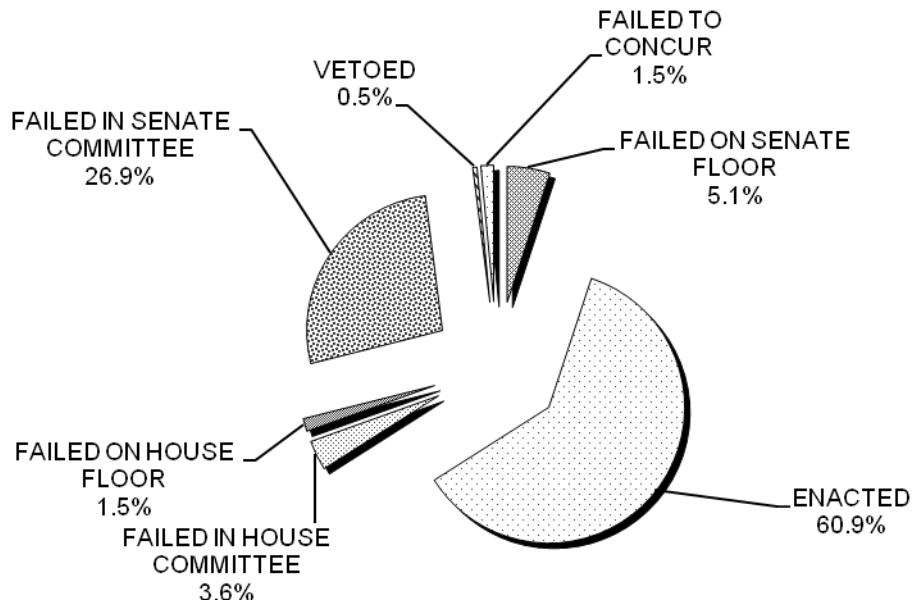
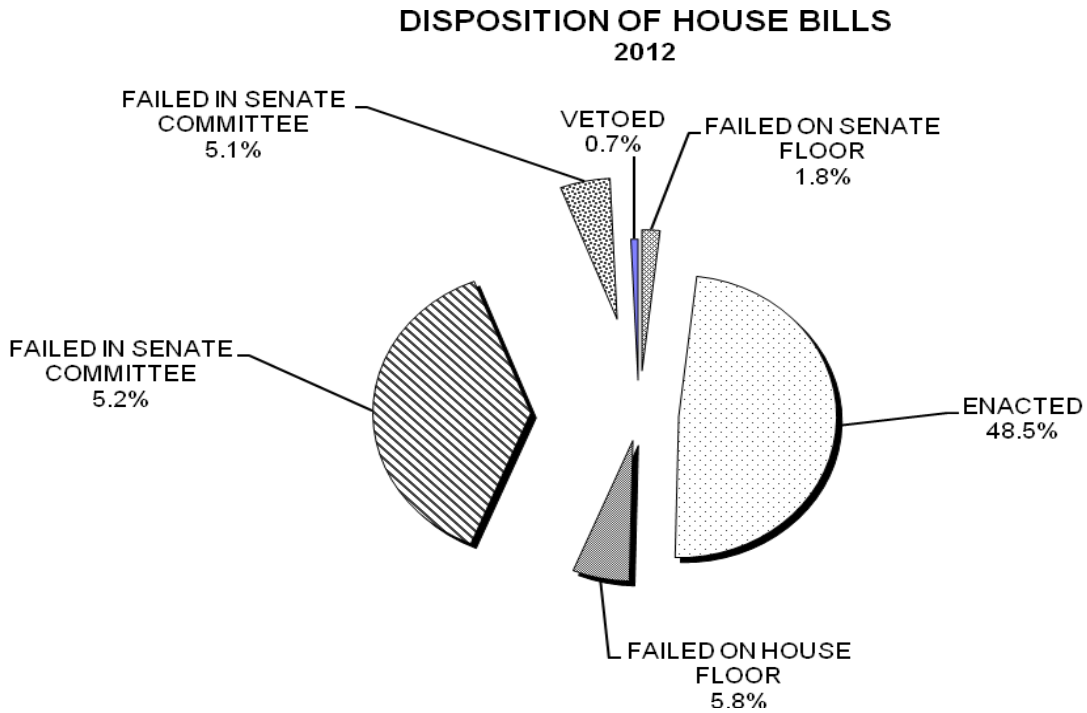


TABLE F
DISPOSITION OF HOUSE BILLS
2012

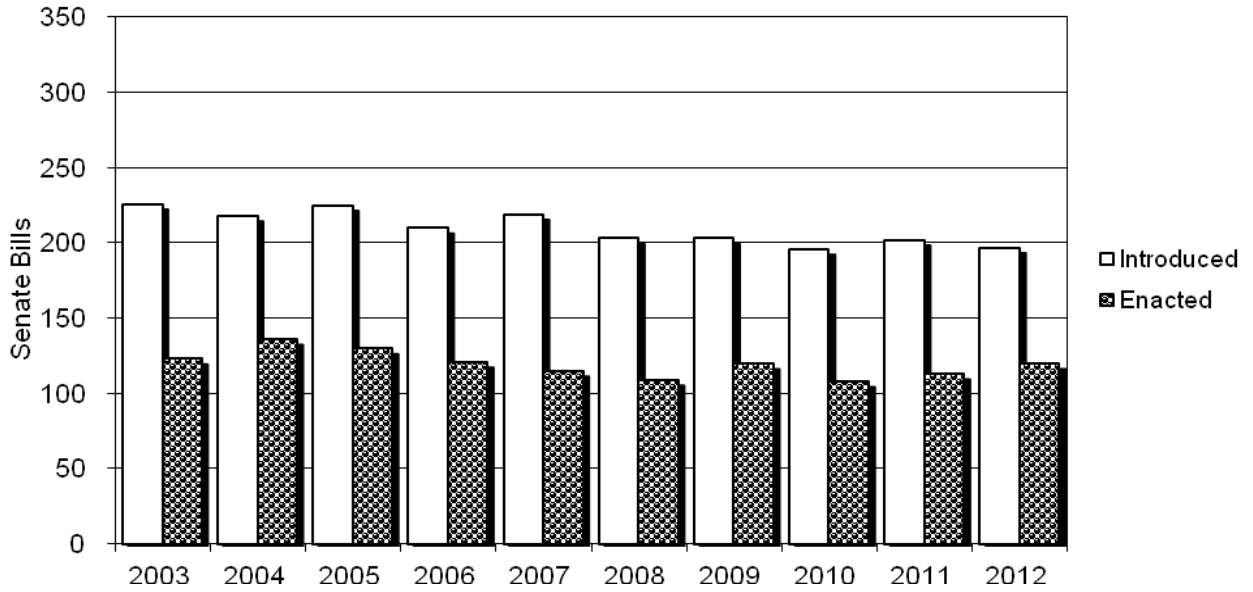
| | |
|----------------------------|------------|
| Failed in House committee | 104 |
| Failed on House floor | 16 |
| Failed in Senate committee | 14 |
| Failed on Senate floor | 5 |
| Failed to concur | 0 |
| Vetoed | 2 |
| Enacted | <u>133</u> |
| Total | 274 |

GRAPH 8



GRAPH 9

DISPOSITION OF SENATE BILLS 2003-2012



GRAPH 10

DISPOSITION OF HOUSE BILLS 2003-2012

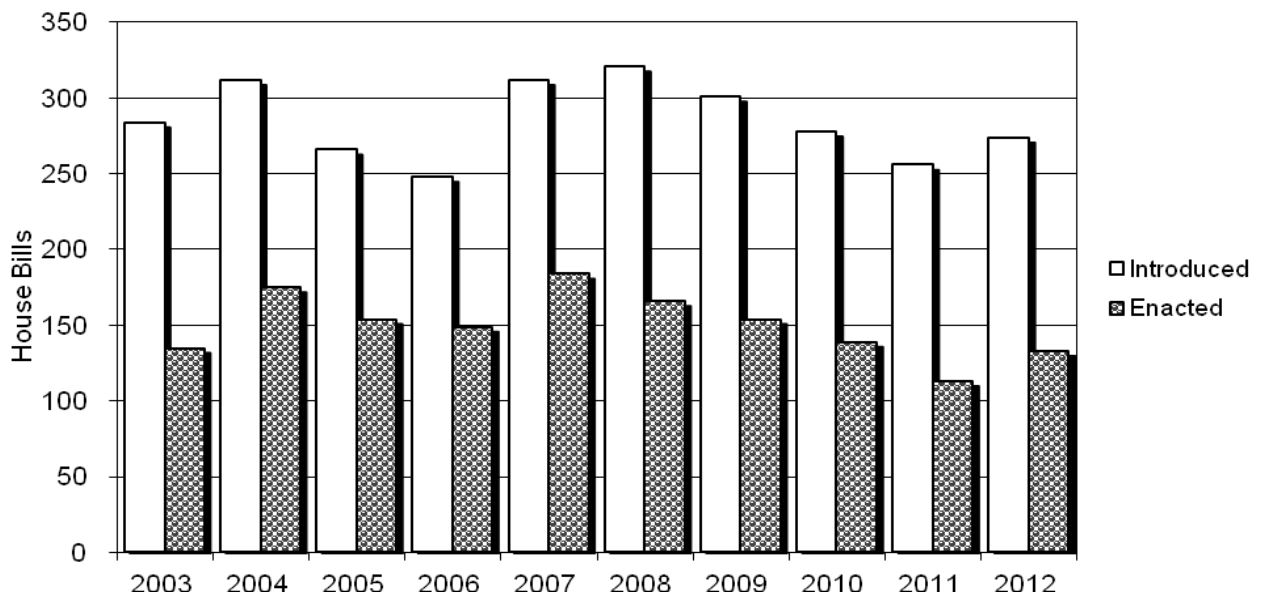


TABLE G

DISPOSITION OF SENATE BILLS FOR YEARS 1890 THROUGH 2012

| Session | Introduced | Delivered | Enacted | Percent Enacted |
|---------|------------|-----------|---------|-----------------|
| 1890# | 270 | 64 | 60 | 22.2% |
| 1891# | 263 | 66 | 64 | 24.3% |
| 1893# | 316 | 106 | 100 | 31.6% |
| 1895# | 370 | 79 | 74 | 20.0% |
| 1897# | 249 | 55 | 52 | 20.9% |
| 1899# | 299 | 74 | 66 | 22.1% |
| 1901# | 226 | 86 | 85 | 37.6% |
| 1903# | 233 | 103 | 99 | 42.5% |
| 1905# | 245 | 98 | 94 | 38.4% |
| 1907# | 291 | 120 | 119 | 40.9% |
| 1909# | 333 | 127 | 126 | 37.8% |
| 1911# | 322 | 113 | 110 | 34.2% |
| 1913# | 405 | 148 | 135 | 33.3% |
| 1915# | 318 | 153 | 151 | 47.5% |
| 1917# | 304 | 166 | 161 | 53.0% |
| 1919# | 275 | 197 | 195 | 70.9% |
| 1921# | 348 | 216 | 209 | 60.1% |
| 1923# | 335 | 153 | 151 | 42.5% |
| 1925# | 319 | 179 | 178 | 55.8% |
| 1927# | 268 | 106 | 101 | 37.7% |
| 1929# | 231 | 118 | 115 | 49.8% |
| 1931# | 241 | 129 | 128 | 53.1% |
| 1933# | 215 | 98 | 98 | 45.6% |
| 1935# | 222 | 119 | 117 | 52.7% |
| 1937# | 283 | 134 | 131 | 46.3% |
| 1939# | 322 | 126 | 124 | 38.5% |
| 1941# | 377 | 194 | 191 | 50.7% |
| 1943# | 235 | 154 | 151 | 64.3% |
| 1945# | 299 | 217 | 217 | 72.6% |
| 1947# | 267 | 215 | 214 | 80.1% |
| 1949# | 292 | 217 | 216 | 74.0% |
| 1951# | 326 | 234 | 232 | 71.2% |
| 1953# | 351 | 231 | 228 | 65.0% |
| 1955# | 393 | 221 | 221 | 56.2% |
| 1957# | 353 | 165 | 164 | 46.5% |
| 1959# | 386 | 204 | 199 | 51.6% |
| 1961# | 372 | 227 | 220 | 59.1% |
| 1963** | 371 | 222 | 218 | 58.8% |
| 1964* | 193 | 111 | 110 | 57.0% |
| 1965** | 251 | 132 | 131 | 52.2% |
| 1966* | 200 | 104 | 103 | 51.5% |
| 1967** | 256 | 141 | 140 | 54.7% |
| 1968* | 213 | 117 | 114 | 53.5% |
| 1969** | 240 | 125 | 121 | 50.4% |
| 1970* | 220 | 113 | 110 | 50.0% |
| 1971** | 250 | 120 | 115 | 46.0% |
| 1972* | 278 | 123 | 120 | 43.2% |
| 1973** | 239 | 117 | 117 | 49.0% |
| 1974* | 263 | 154 | 154 | 58.6% |
| 1975** | 333 | 176 | 175 | 52.6% |
| 1976* | 274 | 130 | 125 | 45.6% |

TABLE G (continued)

| Session | Introduced | Delivered | Enacted | Percent Enacted |
|----------------|-------------------|------------------|----------------|------------------------|
| 1977** | 291 | 151 | 149 | 51.2% |
| 1978* | 343 | 165 | 159 | 46.4% |
| 1979** | 272 | 161 | 155 | 57.0% |
| 1980* | 256 | 153 | 141 | 55.1% |
| 1981*** | 248 | 146 | 136 | 54.8% |
| 1982**** | 245 | 159 | 152 | 62.0% |
| 1983*** | 257 | 162 | 159 | 61.9% |
| 1984**** | 223 | 134 | 128 | 57.4% |
| 1985*** | 311 | 189 | 186 | 59.8% |
| 1986**** | 293 | 184 | 179 | 61.1% |
| 1987*** | 285 | 160 | 152 | 53.3% |
| 1988**** | 348 | 211 | 204 | 58.6% |
| 1989*** | 328 | 196 | 194 | 59.1% |
| 1990**** | 342 | 181 | 179 | 52.3% |
| 1991*** | 268 | 167 | 163 | 60.8% |
| 1992**** | 273 | 169 | 166 | 60.8% |
| 1993*** | 312 | 176 | 173 | 55.4% |
| 1994**** | 269 | 149 | 146 | 54.3% |
| 1995*** | 242 | 124 | 120 | 49.6% |
| 1996**** | 287 | 147 | 142 | 49.5% |
| 1997*** | 272 | 153 | 149 | 54.8% |
| 1998**** | 242 | 139 | 135 | 55.8% |
| 1999*** | 252 | 125 | 119 | 47.2% |
| 2000**** | 209 | 109 | 109 | 52.2% |
| 2001*** | 255 | 137 | 132 | 51.8% |
| 2002**** | 187 | 102 | 100 | 53.5% |
| 2003*** | 226 | 125 | 123 | 54.4% |
| 2004**** | 218 | 138 | 136 | 62.4% |
| 2005*** | 225 | 132 | 130 | 57.8% |
| 2006**** | 210 | 121 | 121 | 57.6% |
| 2007*** | 219 | 118 | 115 | 52.5% |
| 2008**** | 203 | 110 | 109 | 53.7% |
| 2009*** | 203 | 120 | 120 | 59.1% |
| 2010*** | 196 | 110 | 108 | 55.1% |
| 2011*** | 202 | 115 | 113 | 55.9% |
| 2012**** | 197 | 121 | 120 | 60.9% |

| Averages | Introduced | Delivered | Enacted | Percent Enacted |
|------------------------|-------------------|------------------|----------------|------------------------|
| # 60-Day Biennial | 301 | 146 | 143 | 47.5% |
| ** 45-Day Sessions | 278 | 149 | 147 | 52.8% |
| * 30-Day Sessions | 249 | 130 | 126 | 50.7% |
| *** 40-Day Sessions+ | 253 | 144 | 141 | 55.6% |
| **** 35-Day Sessions++ | 250 | 145 | 142 | 56.8% |

+ Includes 39-day session in 1985, 1999, and 2010 and 38-day session in 2011
 ++ Includes 34-day session in 1998 and 2000 and 33-day session in 2012

TABLE H

DISPOSITION OF HOUSE BILLS FOR YEARS 1890 THROUGH 2012

| Session | Introduced | Delivered | Enacted | Percent Enacted |
|---------|------------|-----------|---------|-----------------|
| 1890# | 362 | 83 | 82 | 22.7% |
| 1891# | 307 | 50 | 48 | 15.6% |
| 1893# | 266 | 71 | 71 | 26.7% |
| 1895# | 352 | 92 | 90 | 25.6% |
| 1897# | 310 | 55 | 52 | 16.8% |
| 1899# | 272 | 63 | 60 | 22.1% |
| 1901# | 282 | 105 | 100 | 35.5% |
| 1903# | 297 | 125 | 124 | 41.8% |
| 1905# | 212 | 83 | 79 | 37.3% |
| 1907# | 303 | 132 | 130 | 42.9% |
| 1909# | 423 | 169 | 169 | 40.0% |
| 1911# | 416 | 164 | 154 | 37.0% |
| 1913# | 497 | 206 | 205 | 41.2% |
| 1915# | 398 | 148 | 144 | 36.2% |
| 1917# | 427 | 200 | 198 | 46.4% |
| 1919# | 281 | 168 | 168 | 59.8% |
| 1921# | 370 | 214 | 209 | 56.5% |
| 1923# | 334 | 160 | 159 | 47.6% |
| 1925# | 287 | 124 | 123 | 42.9% |
| 1927# | 271 | 129 | 122 | 45.0% |
| 1929# | 292 | 135 | 133 | 45.5% |
| 1931# | 328 | 144 | 141 | 43.0% |
| 1933# | 314 | 107 | 107 | 34.1% |
| 1935# | 225 | 93 | 91 | 40.4% |
| 1937# | 262 | 131 | 128 | 48.9% |
| 1939# | 318 | 173 | 171 | 53.8% |
| 1941# | 389 | 184 | 179 | 46.0% |
| 1943# | 248 | 168 | 166 | 66.9% |
| 1945# | 218 | 141 | 138 | 63.3% |
| 1947# | 310 | 212 | 208 | 67.1% |
| 1949# | 353 | 230 | 226 | 64.0% |
| 1951# | 365 | 239 | 237 | 64.9% |
| 1953# | 444 | 268 | 267 | 60.1% |
| 1955# | 422 | 221 | 221 | 52.4% |
| 1957# | 576 | 343 | 341 | 59.2% |
| 1959# | 526 | 268 | 260 | 49.4% |
| 1961# | 496 | 257 | 247 | 49.8% |
| 1963** | 469 | 253 | 252 | 53.7% |
| 1964* | 239 | 123 | 118 | 49.4% |
| 1965** | 399 | 186 | 182 | 45.6% |
| 1966* | 353 | 165 | 164 | 46.5% |
| 1967** | 394 | 218 | 214 | 54.3% |
| 1968* | 350 | 166 | 161 | 46.0% |
| 1969** | 394 | 171 | 167 | 42.4% |
| 1970* | 367 | 195 | 194 | 52.9% |
| 1971** | 380 | 193 | 188 | 49.5% |
| 1972* | 373 | 175 | 172 | 46.1% |
| 1973** | 410 | 238 | 237 | 57.8% |
| 1974* | 391 | 229 | 224 | 57.3% |
| 1975** | 342 | 175 | 172 | 50.3% |
| 1976* | 388 | 203 | 196 | 50.5% |

TABLE H (continued)

| Session | Introduced | Delivered | Enacted | Percent Enacted |
|----------------|-------------------|------------------|----------------|------------------------|
| 1977** | 448 | 270 | 260 | 58.0% |
| 1978* | 365 | 215 | 204 | 55.9% |
| 1979** | 343 | 201 | 191 | 55.7% |
| 1980* | 372 | 228 | 215 | 57.8% |
| 1981*** | 383 | 245 | 237 | 61.9% |
| 1982**** | 333 | 222 | 218 | 65.5% |
| 1983*** | 368 | 239 | 228 | 62.0% |
| 1984**** | 358 | 218 | 210 | 58.7% |
| 1985*** | 373 | 213 | 207 | 55.5% |
| 1986**** | 391 | 250 | 245 | 62.7% |
| 1987*** | 371 | 238 | 235 | 63.3% |
| 1988**** | 349 | 213 | 209 | 59.9% |
| 1989*** | 433 | 256 | 256 | 59.1% |
| 1990**** | 388 | 235 | 235 | 60.6% |
| 1991*** | 417 | 258 | 254 | 60.9% |
| 1992**** | 350 | 203 | 199 | 56.9% |
| 1993*** | 356 | 212 | 206 | 57.9% |
| 1994**** | 395 | 254 | 254 | 64.3% |
| 1995*** | 360 | 185 | 178 | 49.4% |
| 1996**** | 364 | 168 | 164 | 45.1% |
| 1997*** | 285 | 159 | 151 | 53.0% |
| 1998**** | 330 | 165 | 162 | 49.1% |
| 1999*** | 304 | 142 | 141 | 46.4% |
| 2000**** | 318 | 148 | 144 | 45.3% |
| 2001*** | 298 | 166 | 160 | 53.7% |
| 2002**** | 305 | 145 | 142 | 46.6% |
| 2003*** | 284 | 136 | 135 | 47.5% |
| 2004**** | 312 | 178 | 175 | 56.1% |
| 2005*** | 266 | 158 | 154 | 57.9% |
| 2006**** | 248 | 151 | 149 | 60.1% |
| 2007*** | 312 | 186 | 184 | 59.0% |
| 2008**** | 321 | 170 | 166 | 51.7% |
| 2009*** | 301 | 155 | 154 | 51.2% |
| 2010*** | 278 | 141 | 139 | 50.0% |
| 2011*** | 256 | 113 | 113 | 44.1% |
| 2012**** | 274 | 135 | 133 | 48.5% |

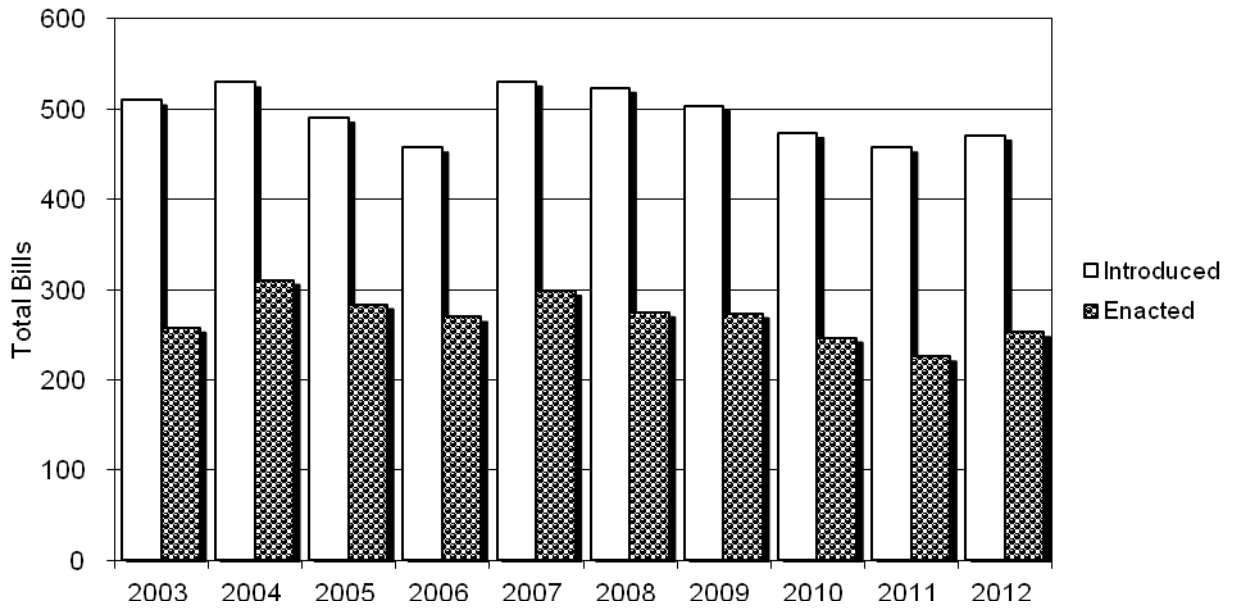
| Averages | Introduced | Delivered | Enacted | Percent Enacted |
|------------------------|-------------------|------------------|----------------|------------------------|
| # 60-Day Biennial | 345 | 158 | 155 | 45.1% |
| ** 45-Day Sessions | 398 | 212 | 207 | 52.1% |
| * 30-Day Sessions | 355 | 189 | 183 | 51.5% |
| *** 40-Day Sessions+ | 332 | 188 | 184 | 55.5% |
| **** 35-Day Sessions++ | 336 | 190 | 187 | 55.7% |

+ Includes 39-day session in 1985, 1999, and 2010 and 38-day session in 2011

++ Includes 34-day session in 1998 and 2000 and 33-day session in 2012

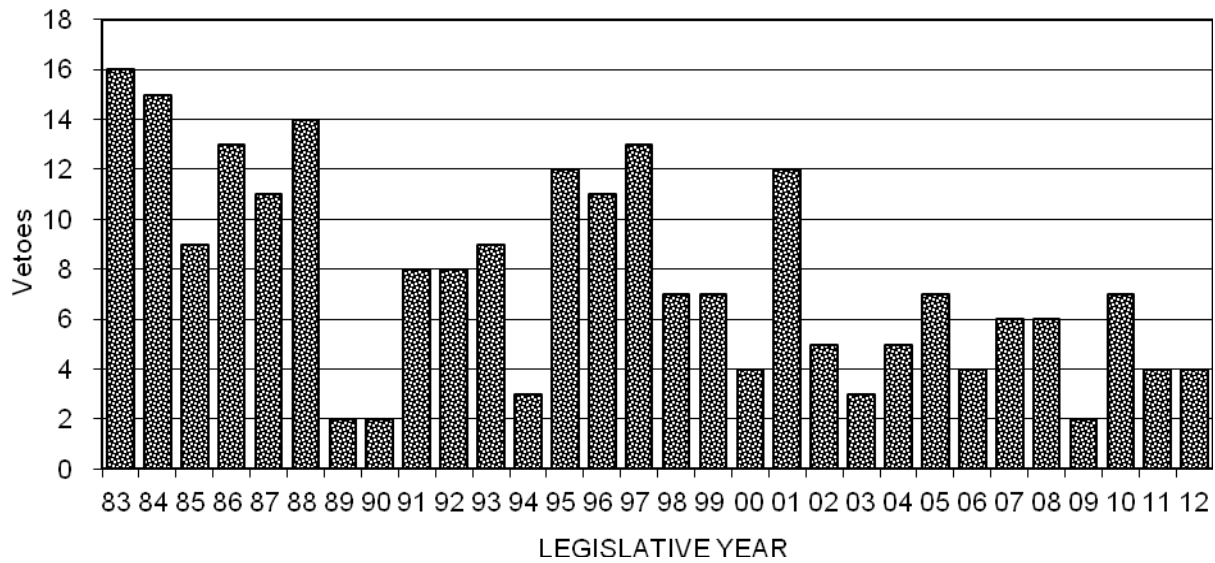
GRAPH 11

DISPOSITION OF LEGISLATIVE BILLS
2003-2012



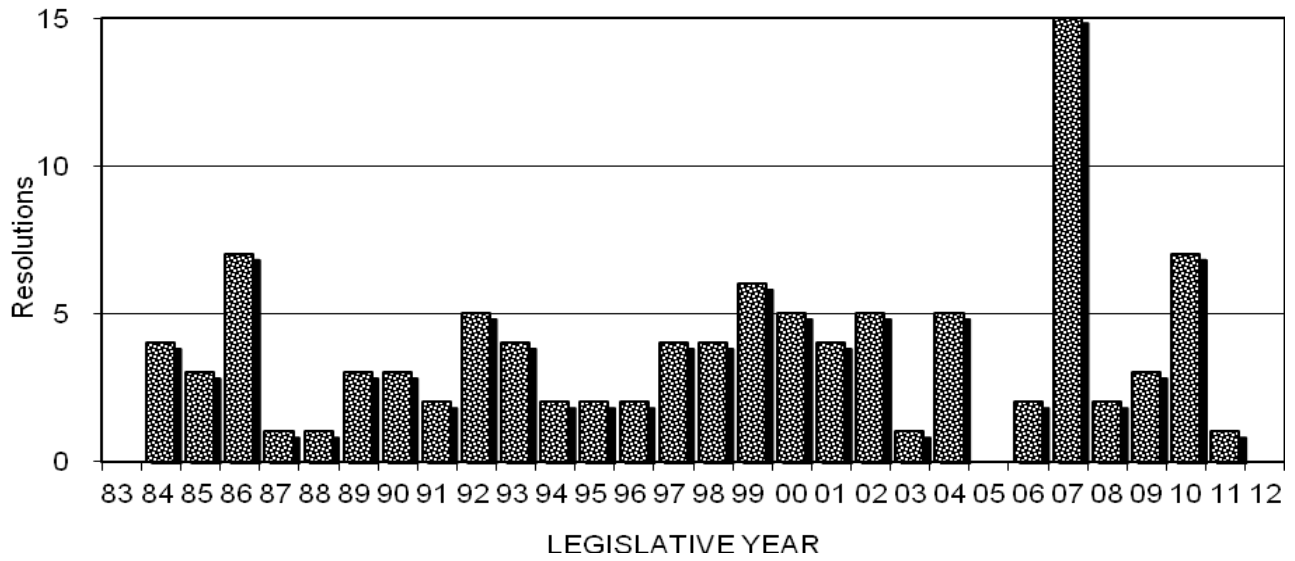
GRAPH 12

VETOES
1983-2012



GRAPH 13

SENATE JOINT RESOLUTIONS Introduced 1983-2012



GRAPH 14

HOUSE JOINT RESOLUTIONS Introduced 1983-2012

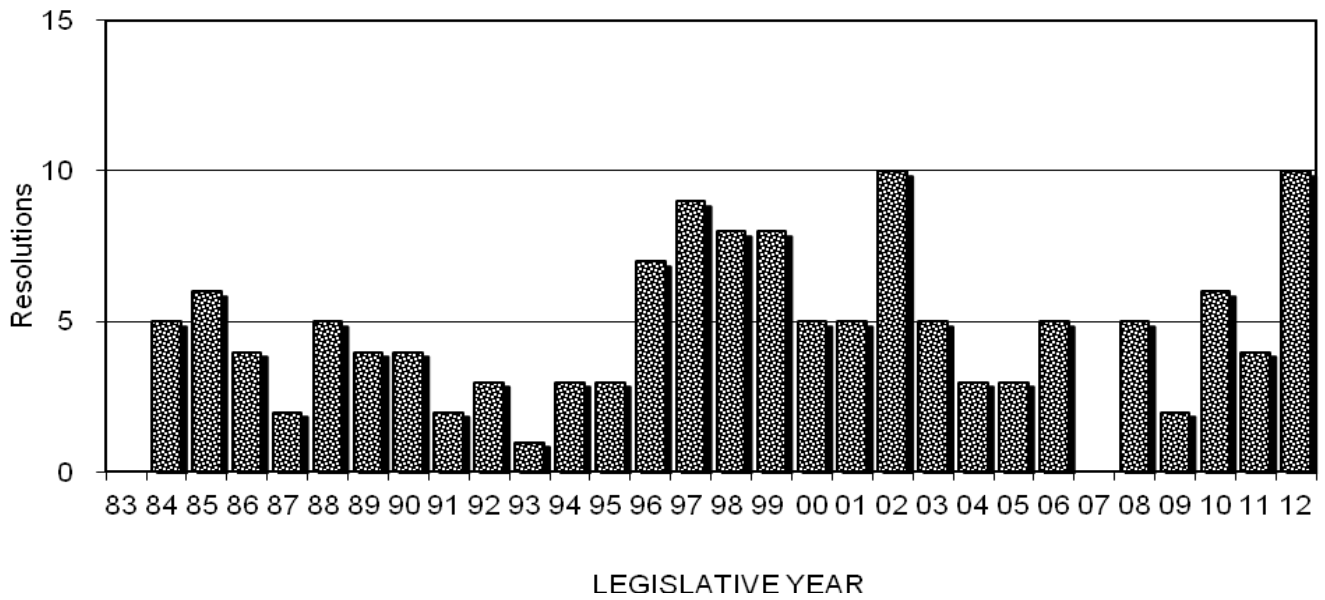


TABLE I

DISPOSITION OF ALL LEGISLATIVE BILLS FOR YEARS 1890 THROUGH 2012

| Session | Introduced | Delivered | Vetoed^a | Enacted | Percent Enacted |
|----------------|-------------------|------------------|---------------------------|----------------|------------------------|
| 1890# | 632 | 147 | 5 | 142 | 22.5% |
| 1891# | 570 | 116 | 4 | 112 | 19.6% |
| 1893# | 582 | 177 | 6 | 171 | 29.4% |
| 1895# | 722 | 171 | 7 | 164 | 22.7% |
| 1897# | 559 | 110 | 6 | 104 | 18.6% |
| 1899# | 571 | 137 | 11 | 126 | 22.1% |
| 1901# | 508 | 191 | 6 ^b | 185 | 36.4% |
| 1903# | 530 | 228 | 5 | 223 | 42.1% |
| 1905# | 457 | 181 | 8 | 173 | 37.9% |
| 1907# | 594 | 252 | 3 | 249 | 41.9% |
| 1909# | 756 | 296 | 1 | 295 | 39.0% |
| 1911# | 738 | 277 | 13 | 264 | 35.8% |
| 1913# | 902 | 354 | 14 | 340 | 37.7% |
| 1915# | 716 | 301 | 6 | 295 | 41.2% |
| 1917# | 731 | 366 | 7 | 359 | 49.1% |
| 1919# | 556 | 365 | 2 | 363 | 65.3% |
| 1921# | 718 | 430 | 12 | 418 | 58.2% |
| 1923# | 669 | 313 | 3 | 310 | 46.3% |
| 1925# | 606 | 303 | 2 | 301 | 49.7% |
| 1927# | 539 | 235 | 12 | 223 | 41.4% |
| 1929# | 523 | 253 | 5 | 248 | 47.4% |
| 1931# | 569 | 273 | 4 | 269 | 47.3% |
| 1933# | 529 | 205 | 0 | 205 | 38.8% |
| 1935# | 447 | 212 | 4 | 208 | 46.5% |
| 1937# | 545 | 265 | 6 | 259 | 47.5% |
| 1939# | 640 | 299 | 4 | 295 | 46.1% |
| 1941# | 766 | 378 | 8 | 370 | 48.3% |
| 1943# | 483 | 322 | 5 | 317 | 65.6% |
| 1945# | 517 | 358 | 3 | 355 | 68.7% |
| 1947# | 577 | 427 | 5 | 422 | 73.1% |
| 1949# | 645 | 447 | 5 | 442 | 68.5% |
| 1951# | 691 | 473 | 4 | 469 | 67.9% |
| 1953# | 795 | 499 | 4 | 495 | 62.3% |
| 1955# | 815 | 442 | 0 | 442 | 54.2% |
| 1957# | 929 | 508 | 3 | 505 | 54.4% |
| 1959# | 912 | 472 | 13 | 459 | 50.3% |
| 1961# | 868 | 484 | 17 ^b | 467 | 53.8% |
| 1963** | 840 | 475 | 5 | 470 | 56.0% |
| 1964* | 432 | 234 | 6 | 228 | 52.8% |
| 1965** | 650 | 318 | 5 | 313 | 48.2% |
| 1966* | 553 | 269 | 2 | 267 | 48.3% |
| 1967** | 650 | 359 | 6 | 354 | 54.5% |
| 1968* | 563 | 283 | 8 | 275 | 48.8% |
| 1969** | 634 | 296 | 8 | 288 | 45.4% |
| 1970* | 587 | 308 | 4 | 304 | 51.8% |
| 1971** | 630 | 313 | 10 | 303 | 48.1% |
| 1972* | 651 | 298 | 6 | 292 | 44.8% |
| 1973** | 649 | 355 | 1 | 354 | 54.6% |
| 1974* | 654 | 383 | 5 | 378 | 57.8% |
| 1975** | 675 | 351 | 4 | 347 | 51.4% |
| 1976* | 662 | 333 | 12 | 321 | 48.5% |
| 1977** | 739 | 421 | 28 | 409 | 55.4% |

TABLE I (continued)

| Session | Introduced | Delivered | Vetoed^a | Enacted | Percent Enacted |
|----------------|-------------------|------------------|---------------------------|----------------|------------------------|
| 1978* | 708 | 380 | 18 | 363 | 51.3% |
| 1979** | 615 | 362 | 18 | 346 | 56.3% |
| 1980* | 628 | 381 | 31 ^b | 356 | 56.7% |
| 1981*** | 631 | 391 | 20 | 373 | 59.1% |
| 1982**** | 578 | 381 | 11 | 370 | 64.0% |
| 1983*** | 625 | 401 | 16 | 387 | 61.9% |
| 1984**** | 581 | 352 | 15 | 338 | 58.2% |
| 1985*** | 684 | 402 | 9 | 393 | 57.5% |
| 1986**** | 684 | 434 | 13 | 424 | 62.0% |
| 1987*** | 656 | 398 | 11 ^b | 387 | 59.0% |
| 1988**** | 697 | 424 | 14 | 413 | 59.3% |
| 1989*** | 761 | 452 | 2 | 450 | 59.1% |
| 1990**** | 730 | 416 | 2 | 414 | 56.7% |
| 1991*** | 685 | 425 | 8 | 417 | 60.9% |
| 1992**** | 623 | 372 | 8 | 365 | 58.6% |
| 1993*** | 668 | 388 | 9 | 379 | 56.7% |
| 1994**** | 664 | 403 | 3 | 400 | 60.2% |
| 1995*** | 602 | 309 | 12 ^b | 298 | 49.5% |
| 1996**** | 651 | 315 | 11 | 306 | 47.0% |
| 1997*** | 557 | 312 | 13 | 300 | 53.9% |
| 1998**** | 572 | 304 | 7 | 297 | 51.9% |
| 1999*** | 556 | 267 | 7 | 260 | 46.8% |
| 2000**** | 527 | 257 | 4 | 253 | 48.0% |
| 2001*** | 553 | 303 | 12 | 292 | 52.8% |
| 2002**** | 492 | 247 | 5 | 242 | 49.2% |
| 2003*** | 510 | 261 | 3 | 258 | 50.6% |
| 2004**** | 530 | 316 | 5 ^b | 311 | 58.7% |
| 2005*** | 491 | 290 | 7 | 284 | 57.8% |
| 2006**** | 458 | 272 | 4 | 270 | 59.0% |
| 2007*** | 531 | 304 | 5 | 299 | 56.3% |
| 2008**** | 524 | 280 | 5 | 275 | 52.5% |
| 2009*** | 504 | 275 | 1 | 274 | 54.4% |
| 2010*** | 474 | 251 | 7 | 247 | 50.7% |
| 2011*** | 458 | 228 | 4 | 226 | 49.3% |
| 2012**** | 471 | 256 | 4 | 253 | 53.7% |

a - All bills vetoed, including those overridden, but doesn't include line item vetoes

b - Includes one bill returned for style and form changes but not approved by the Legislature

| Averages | Introduced | Delivered | Enacted | Percent Enacted |
|------------------------|-------------------|------------------|----------------|------------------------|
| # 60-Day Biennial | 646 | 305 | 299 | 46.2% |
| ** 45-Day Sessions | 676 | 361 | 354 | 52.4% |
| * 30-Day Sessions | 604 | 319 | 309 | 51.2% |
| *** 40-Day Sessions+ | 585 | 333 | 325 | 55.5% |
| **** 35-Day Sessions++ | 585 | 335 | 329 | 56.1% |

+ Includes 39-day session in 1985, 1999, and 2010 and 38-day session in 2011

++ Includes 34-day session in 1998 and 2000 and 33-day session in 2012

TABLE J

BILLS VETOED BY THE GOVERNOR FOR YEARS 1890 THROUGH 2012

| Session | Total Bills Vetoed^a | House Bills Vetoed | Senate Bills Vetoed | Veto Overridden^b | Line Items Vetoed in general Appropriations Bill |
|----------------|---------------------------------------|---------------------------|----------------------------|------------------------------------|---|
| 1890 | 5 | 1 | 4 | --- | 0 |
| 1891 | 4 | 2 | 2 | --- | 0 |
| 1893 | 6 | 0 | 6 | --- | 0 |
| 1895 | 7 | 2 | 5 | --- | 0 |
| 1897 | 6 | 3 | 3 | --- | 4 |
| 1899 | 11 | 3 | 8 | --- | 3 |
| 1901 | 6 ^c | 5 ^c | 1 | --- | 0 |
| 1903 | 5 | 1 | 4 | --- | 0 |
| 1905 | 8 | 4 | 4 | --- | 0 |
| 1907 | 3 | 2 | 1 | --- | 0 |
| 1909 | 1 | 0 | 1 | --- | 0 |
| 1911 | 13 | 10 | 3 | --- | 0 |
| 1913 | 14 | 1 | 13 | --- | 0 |
| 1915 | 6 | 4 | 2 | --- | 4 |
| 1917 | 7 | 2 | 5 | --- | 0 |
| 1919 | 2 | 0 | 2 | --- | 0 |
| 1921 | 12 | 5 | 7 | --- | 0 |
| 1923 | 3 | 1 | 2 | --- | 0 |
| 1925 | 2 | 1 | 1 | --- | 2 ^d |
| 1927 | 12 | 7 | 5 | --- | 16 ^d |
| 1929 | 5 | 2 | 3 | --- | 1 |
| 1931 | 4 | 3 | 1 | --- | 0 |
| 1933 | 0 | 0 | 0 | --- | 0 |
| 1935 | 4 | 2 | 2 | --- | 0 |
| 1937 | 6 | 3 | 3 | --- | 0 |
| 1939 | 4 | 2 | 2 | --- | 0 |
| 1941 | 8 | 5 | 3 | --- | 0 |
| 1943 | 5 | 2 | 3 | --- | 0 |
| 1945 | 3 | 3 | 0 | --- | 0 |
| 1947 | 5 | 4 | 1 | --- | 0 |
| 1949 | 5 | 4 | 1 | --- | 0 |
| 1951 | 4 | 2 | 2 | --- | 0 |
| 1953 | 4 | 1 | 3 | --- | 0 |
| 1955 | 0 | 0 | 0 | --- | 0 |
| 1957 | 3 | 2 | 1 | --- | 0 |
| 1959 | 13 | 8 | 5 | --- | 0 |
| 1961 | 17 ^c | 10 ^c | 7 | --- | 0 |
| 1963 | 5 | 1 | 4 | 0 | 0 |
| 1964 | 6 | 5 | 1 | 0 | 0 |
| 1965 | 5 | 4 | 1 | 0 | 0 |
| 1966 | 2 | 1 | 1 | 0 | 0 |
| 1967 | 6 | 4 | 2 | 0 | 0 |
| 1968 | 8 | 5 | 3 | 0 | 1 |
| 1969 | 8 | 4 | 4 | 0 | 0 |
| 1970 | 4 | 1 | 3 | 0 | 0 |
| 1971 | 10 | 5 | 5 | 0 | 2 |
| 1972 | 6 | 3 | 3 | 0 | 2 |
| 1973 | 1 | 1 | 0 | 0 | 0 |
| 1974 | 5 | 5 | 0 | 0 | 1 |
| 1975 | 4 | 3 | 1 | 0 | 0 |

TABLE J (continued)

| Session | Total Bills Vetoed^a | House Bills Vetoed | Senate Bills Vetoed | Veto Overridden^b | Line Items Vetoed in General Appropriations Bill |
|----------------|---------------------------------------|---------------------------|----------------------------|------------------------------------|---|
| 1976 | 12 | 7 | 5 | 0 | 0 |
| 1977 | 28 | 17 | 11 | 16 | 0 |
| 1978 | 18 | 12 | 6 | 1 | 0 |
| 1979 | 18 | 11 | 7 | 2 | 0 |
| 1980 | 31 ^c | 16 ^c | 15 | 6 | 1 |
| 1981 | 20 | 8 | 12 | 2 | 0 |
| 1982 | 11 | 4 | 7 | 0 | 0 |
| 1983 | 16 | 12 | 4 | 2 | 0 |
| 1984 | 15 | 9 | 6 | 2 ^e | 1 |
| 1985 | 9 | 6 | 3 | 0 | 0 |
| 1986 | 13 | 6 | 7 | 3 | 0 |
| 1987 | 11 ^c | 3 | 8 ^c | 0 | 0 |
| 1988 | 14 | 5 | 9 | 3 | 15 |
| 1989 | 2 | 0 | 2 | 0 | 0 |
| 1990 | 2 | 0 | 2 | 0 | 0 |
| 1991 | 8 | 4 | 4 | 0 | 0 |
| 1992 | 8 | 4 | 4 | 1 | 5 |
| 1993 | 9 | 6 | 3 | 0 | 0 |
| 1994 | 3 | 0 | 3 | 0 | 0 |
| 1995 | 12 ^c | 7 | 5 | 1 | 0 |
| 1996 | 11 | 4 | 7 | 2 | 2 |
| 1997 | 13 | 9 | 4 | 1 | 0 |
| 1998 | 7 | 3 | 4 | 0 | 0 |
| 1999 | 7 | 1 | 6 | 1 ^f | 0 |
| 2000 | 4 | 4 | 0 | 0 | 0 ^g |
| 2001 | 12 | 7 | 5 | 1 | 0 |
| 2002 | 5 | 3 | 2 | 0 | 0 |
| 2003 | 3 | 1 | 2 | 1 ^h | 2 ^g |
| 2004 | 5 ^c | 2 | 3 ^c | 0 | 0 |
| 2005 | 7 | 5 | 2 | 1 | 2 ^g |
| 2006 | 4 | 4 | 0 | 2 | 0 ^g |
| 2007 | 6 | 3 | 3 | 1 | 0 |
| 2008 | 6 | 5 | 1 | 1 | 2 |
| 2009 | 2 | 2 | 0 | 1 | 0 |
| 2010 | 7 | 4 | 3 | 3 | 0 |
| 2011 | 4 | 2 | 2 ^c | 2 | 0 |
| 2012 | 4 | 3 | 1 | 1 | 0 ^g |

a - Doesn't include line item vetoes of general appropriations bill

b - Data on veto overrides incomplete prior to 1963

c - Includes one bill returned for style and form changes but not approved by the Legislature

d - General appropriations bill not passed during regular session but was passed in a special legislative session held prior to the beginning of the fiscal year

e - Includes override of line item veto

f - Override of style and form veto

g - Doesn't include a line item veto of special appropriations bill

h - Override of line item veto of special appropriations bill

TABLE K

DISPOSITION OF JOINT RESOLUTIONS FOR YEARS 1909 THROUGH 2012

| Session | House Joint Resolutions | | Senate Joint Resolutions | |
|---------|-------------------------|-----------|--------------------------|-----------|
| | (Introduced) | (Adopted) | (Introduced) | (Adopted) |
| 1909 | 38 | 24 | 14 | 3 |
| 1911 | 16 | 3 | 25 | 10 |
| 1913 | 23 | 10 | 41 | 21 |
| 1915 | 20 | 8 | 9 | 4 |
| 1917 | 17 | 9 | 17 | 8 |
| 1919 | 5 | 0 | 6 | 3 |
| 1921 | 7 | 2 | 11 | 5 |
| 1923 | 9 | 2 | 9 | 2 |
| 1925 | 5 | 0 | 9 | 2 |
| 1927 | 3 | 0 | 7 | 0 |
| 1929 | 6 | 3 | 7 | 3 |
| 1931 | 11 | 2 | 6 | 0 |
| 1933 | 11 | 1 | 5 | 2 |
| 1935 | 11 | 3 | 8 | 3 |
| 1937 | 9 | 2 | 13 | 3 |
| 1939 | 15 | 4 | 11 | 1 |
| 1941 | 10 | 3 | 9 | 2 |
| 1943 | 7 | 1 | 2 | 1 |
| 1945 | 10 | 3 | 2 | 1 |
| 1947 | 8 | 4 | 4 | 1 |
| 1949 | 6 | 4 | 6 | 2 |
| 1951 | 2 | 1 | 4 | 3 |
| 1953 | 3 | 3 | 5 | 2 |
| 1955 | 5 | 1 | 8 | 1 |
| 1957 | 6 | 2 | 9 | 3 |
| 1959 | 8 | 3 | 13 | 3 |
| 1961 | 6 | 1 | 9 | 3 |
| 1963 | 8 | 1 | 6 | 3 |
| 1964 | 9 | 2 | 7 | 0 |
| 1965 | 8 | 1 | 7 | 1 |
| 1966 | 8 | 1 | 7 | 1 |
| 1967 | 11 | 0 | 9 | 2 |
| 1968 | 24 | 2 | 9 | 2 |
| 1969 | 7 | 3 | 6 | 0 |
| 1970 | 14 | 4 | 12 | 4 |
| 1971 | 5 | 1 | 7 | 1 |
| 1972 | 18 | 4 | 8 | 1 |
| 1973 | 2 | 0 | 3 | 1 |
| 1974 | 7 | 2 | 1 | 0 |
| 1975 | 5 | 1 | 6 | 3 |
| 1976 | 13 | 3 | 3 | 0 |
| 1977 | 20 | 14 | 5 | 0 |
| 1978 | 8 | 5 | 9 | 3 |
| 1979 | 6 | 1 | 5 | 3 |
| 1980 | 8 | 4 | 0 | 0 |
| 1981 | 4 | 0 | 5 | 0 |
| 1982 | 4 | 2 | 3 | 2 |
| 1983 | 0 | 0 | 0 | 0 |
| 1984 | 5 | 4 | 4 | 0 |
| 1985 | 6 | 4 | 3 | 1 |
| 1986 | 4 | 2 | 7 | 2 |
| 1987 | 2 | 1 | 1 | 0 |
| 1988 | 5 | 4 | 1 | 0 |

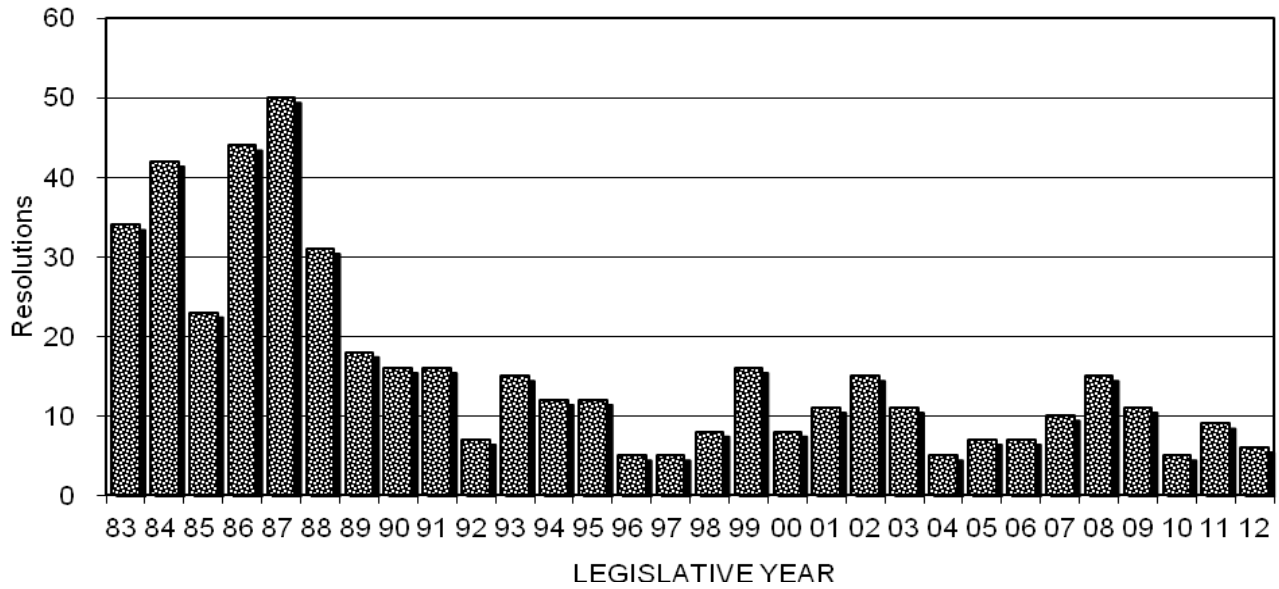
TABLE K (continued)

| Session | House Joint Resolutions | | Senate Joint Resolutions | |
|---------|-------------------------|-----------|--------------------------|-----------|
| | (Introduced) | (Adopted) | (Introduced) | (Adopted) |
| 1989 | 4 | 1 | 3 | 2 |
| 1990 | 4 | 3 | 3 | 1 |
| 1991 | 2 | 0 | 2 | 0 |
| 1992 | 3 | 0 | 5 | 0 |
| 1993 | 1 | 1 | 4 | 3 |
| 1994 | 3 | 1 | 2 | 0 |
| 1995 | 3 | 2 | 2 | 0 |
| 1996 | 7 | 1 | 2 | 1 |
| 1997 | 9 | 3 | 4 | 0 |
| 1998 | 8 | 2 | 4 | 1 |
| 1999 | 8 | 2 | 6 | 0 |
| 2000 | 5 | 0 | 5 | 1 |
| 2001 | 5 | 0 | 4 | 1 |
| 2002 | 10 | 3 | 5 | 0 |
| 2003 | 5 | 1 | 1 | 0 |
| 2004 | 3 | 1 | 5 | 0 |
| 2005 | 3 | 1 | 0 | 0 |
| 2006 | 5 | 1 | 2 | 0 |
| 2007 | 0 | 0 | 15 | 0 |
| 2008 | 5 | 3 | 2 | 1 |
| 2009 | 2 | 0 | 3 | 0 |
| 2010 | 6 | 1 | 7 | 1 |
| 2011 | 4 | 0 | 1 | 0 |
| 2012 | 10 | 4 | 0 | 0 |

GRAPH 15

SENATE CONCURRENT RESOLUTIONS

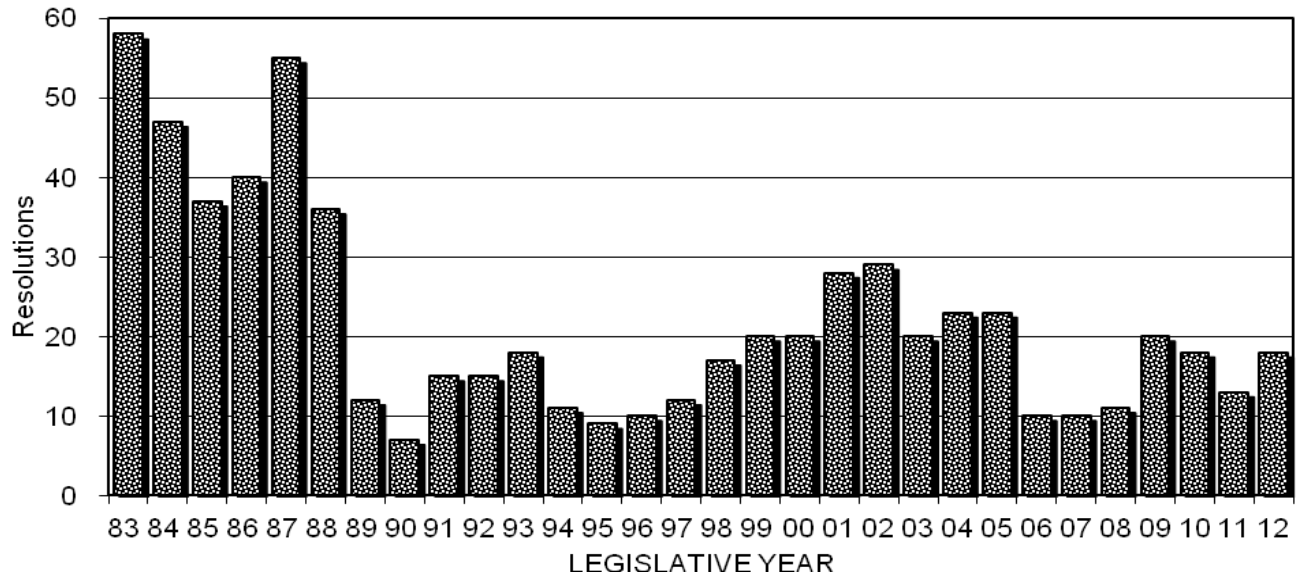
Introduced 1983-2012



GRAPH 16

HOUSE CONCURRENT RESOLUTIONS

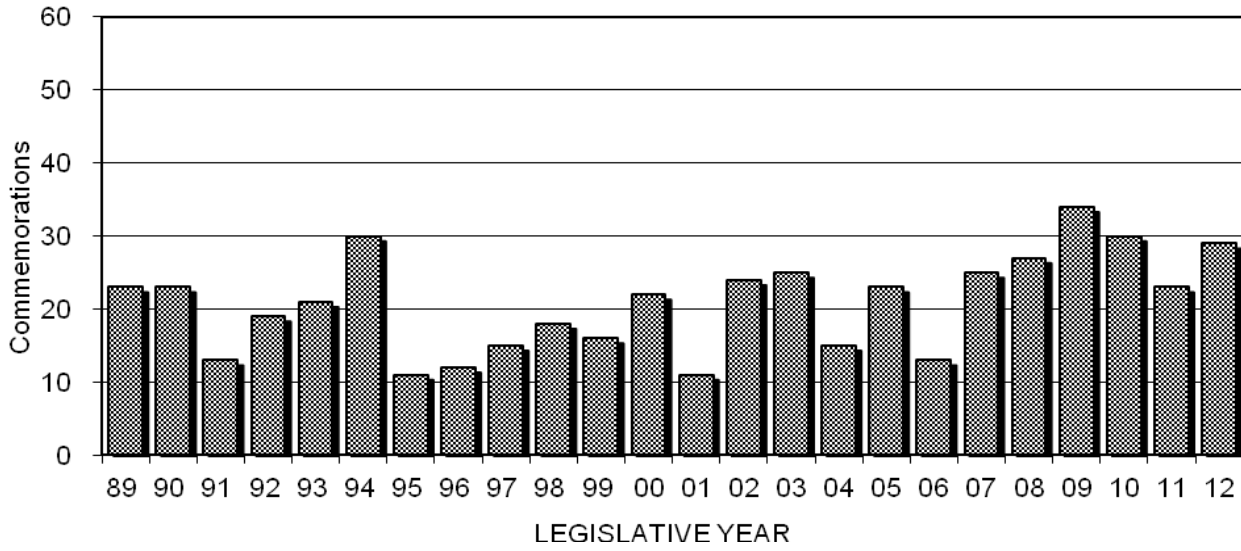
Introduced 1983-2012



GRAPH 17

SENATE COMMEMORATIONS

Adopted 1989-2012



GRAPH 18

HOUSE COMMEMORATIONS

Adopted 1989-2012

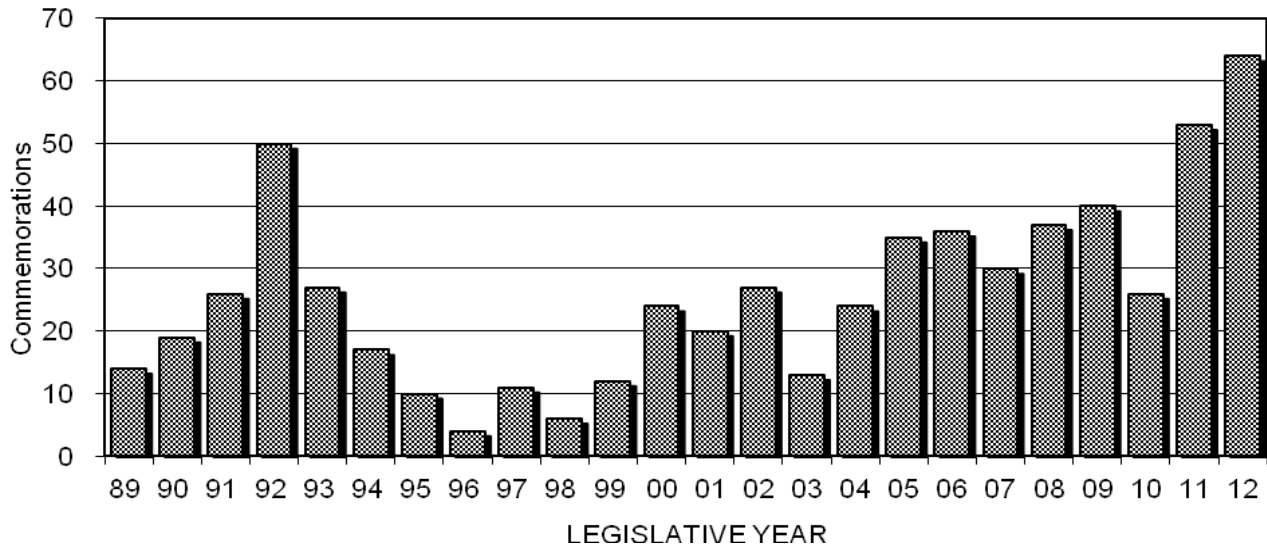


TABLE L

DISPOSITION OF CONCURRENT RESOLUTIONS FOR YEARS 1921 THROUGH 2012

| Session | House Concurrent Resolutions (Introduced) (Adopted) | | Senate Concurrent Resolutions (Introduced) (Adopted) | |
|---------|--|-----|---|-----|
| 1921 | 16 | N/A | 12 | N/A |
| 1923 | 29 | 10 | 29 | 10 |
| 1925 | 11 | 9 | 16 | 14 |
| 1927 | 4 | 4 | 23 | 14 |
| 1929 | 12 | 9 | 12 | 9 |
| 1931 | 23 | 9 | 20 | 15 |
| 1933 | 13 | 5 | 5 | 5 |
| 1935 | 16 | 8 | 12 | 5 |
| 1937 | 14 | 13 | 13 | 10 |
| 1939 | 15 | 12 | 12 | 9 |
| 1941 | 14 | 9 | 13 | 8 |
| 1943 | 9 | 6 | 12 | 6 |
| 1945 | 8 | 4 | 5 | 2 |
| 1947 | 7 | 6 | 7 | 6 |
| 1949 | 7 | 6 | 13 | 12 |
| 1951 | 13 | 11 | 15 | 8 |
| 1953 | 10 | 5 | 20 | 10 |
| 1955 | 13 | 1 | 6 | 2 |
| 1957 | 8 | 4 | 11 | 7 |
| 1959 | 9 | 2 | 15 | 2 |
| 1961 | 21 | 15 | 16 | 11 |
| 1963 | 18 | 12 | 14 | 9 |
| 1964 | 6 | 3 | 9 | 5 |
| 1965 | 26 | 15 | 13 | 8 |
| 1966 | 9 | 6 | 7 | 4 |
| 1967 | 12 | 10 | 17 | 13 |
| 1968 | 8 | 6 | 14 | 10 |
| 1969 | 24 | 18 | 11 | 8 |
| 1970 | 25 | 12 | 15 | 6 |
| 1971 | 30 | 23 | 17 | 11 |
| 1972 | 29 | 23 | 9 | 9 |
| 1973 | 33 | 28 | 9 | 6 |
| 1974 | 24 | 24 | 17 | 11 |
| 1975 | 20 | 17 | 20 | 15 |
| 1976 | 21 | 15 | 26 | 24 |
| 1977 | 21 | 18 | 18 | 15 |
| 1978 | 20 | 19 | 24 | 18 |
| 1979 | 19 | 17 | 27 | 22 |
| 1980 | 34 | 31 | 18 | 16 |
| 1981 | 33 | 28 | 31 | 28 |
| 1982 | 43 | 39 | 20 | 16 |
| 1983 | 58 | 56 | 34 | 27 |
| 1984 | 47 | 45 | 42 | 41 |
| 1985 | 37 | 33 | 23 | 21 |
| 1986 | 40 | 40 | 44 | 43 |
| 1987 | 55 | 52 | 50 | 46 |
| 1988 | 36 | 35 | 31 | 29 |
| 1989 | 12 | 9 | 18 | 15 |
| 1990 | 7 | 6 | 16 | 13 |
| 1991 | 15 | 12 | 16 | 12 |
| 1992 | 15 | 12 | 7 | 6 |
| 1993 | 18 | 15 | 15 | 8 |
| 1994 | 11 | 9 | 12 | 8 |

TABLE L (continued)

| Session | House Concurrent Resolutions (Introduced) (Adopted) | | Senate Concurrent Resolutions (Introduced) (Adopted) | |
|---------|--|----|---|----|
| | 1995 | 9 | 7 | 12 |
| 1996 | 10 | 7 | 5 | 1 |
| 1997 | 12 | 8 | 5 | 4 |
| 1998 | 17 | 13 | 8 | 5 |
| 1999 | 20 | 13 | 16 | 13 |
| 2000 | 20 | 15 | 8 | 6 |
| 2001 | 28 | 13 | 11 | 9 |
| 2002 | 29 | 20 | 15 | 15 |
| 2003 | 20 | 16 | 11 | 9 |
| 2004 | 23 | 17 | 5 | 3 |
| 2005 | 23 | 18 | 7 | 7 |
| 2006 | 10 | 10 | 7 | 5 |
| 2007 | 10 | 8 | 10 | 7 |
| 2008 | 11 | 11 | 15 | 11 |
| 2009 | 20 | 16 | 11 | 9 |
| 2010 | 18 | 14 | 5 | 5 |
| 2011 | 13 | 10 | 9 | 5 |
| 2012 | 18 | 12 | 6 | 6 |

TABLE M**DISPOSITION OF COMMEMORATIONS FOR YEARS 1989 THROUGH 2012**

| Session | House Commemorations (Introduced) (Adopted) | | Senate Commemorations (Introduced) (Adopted) | |
|---------|--|----|---|----|
| | 1989 | 16 | 14 | 23 |
| 1990 | 19 | 19 | 23 | 23 |
| 1991 | 26 | 26 | 13 | 13 |
| 1992 | 50 | 50 | 19 | 19 |
| 1993 | 27 | 27 | 21 | 21 |
| 1994 | 17 | 17 | 30 | 30 |
| 1995 | 10 | 10 | 11 | 11 |
| 1996 | 4 | 4 | 12 | 12 |
| 1997 | 11 | 11 | 15 | 15 |
| 1998 | 6 | 6 | 18 | 18 |
| 1999 | 12 | 12 | 16 | 16 |
| 2000 | 24 | 24 | 22 | 22 |
| 2001 | 20 | 20 | 11 | 11 |
| 2002 | 27 | 27 | 24 | 24 |
| 2003 | 13 | 13 | 25 | 25 |
| 2004 | 24 | 24 | 15 | 15 |
| 2005 | 35 | 35 | 23 | 23 |
| 2006 | 36 | 36 | 13 | 13 |
| 2007 | 31 | 30 | 25 | 25 |
| 2008 | 37 | 37 | 27 | 27 |
| 2009 | 40 | 40 | 34 | 34 |
| 2010 | 26 | 26 | 30 | 30 |
| 2011 | 53 | 53 | 23 | 23 |
| 2012 | 64 | 64 | 29 | 29 |

SPECIAL SESSIONS

On October 15-17, 1889, the South Dakota Legislature met for the first time in Special Session to organize and elect officers. No bills or resolutions were addressed at that Special Session. Since then the Legislature has met in Special Session 24 times. The most recent Special Session was October 24, 2011. A summary of the number of bills, resolutions, and commemorations addressed by these Special Sessions follows.

TABLE N
DISPOSITION OF TOTAL BILLS FOR ALL SPECIAL SESSIONS

| Session | Introduced | Delivered | Enacted | Percent Enacted |
|------------------------|-------------------|------------------|----------------|------------------------|
| February 8-11, 1916 | 6 | 3 | 3 | 50.0% |
| March 18-23, 1918 | 68 | 58 | 58 | 85.3% |
| December 2-4, 1919 | 0 | 0 | 0 | ----- |
| June 21-29, 1920 | 132 | 88 | 88* | 66.7% |
| June 22-July 1, 1927 | 40 | 21 | 21 | 52.5% |
| July 31-August 5, 1933 | 59 | 20 | 20 | 33.9% |
| December 21-24, 1936 | 14 | 3 | 3 | 21.4% |
| July 10-12, 1944 | 7 | 5 | 5 | 71.4% |
| February 6-16, 1950 | 40 | 21 | 21 | 52.5% |
| May 18, 1981 | 5 | 1 | 1 | 20.0% |
| September 23-24, 1981 | 8 | 4 | 4 | 50.0% |
| May 2-3, 1984 | 2 | 1 | 1 | 50.0% |
| July 16, 1987 | 3 | 3 | 3 | 100.0% |
| October 3, 1991 | 6 | 2 | 2 | 33.3% |
| November 26, 1991 | 2 | 2 | 2 | 100.0% |
| May 25, 1993 | 5 | 4 | 4 | 80.0% |
| July 11-12, 1994 | 12 | 4 | 4 | 33.3% |
| September 9, 1994 | 25 | 18 | 16** | 64.0% |
| April 14, 1997 | 2 | 1 | 1 | 50.0% |
| December 28-29, 2000 | 4 | 3 | 3 | 75.0% |
| October 23-24, 2001 | 2 | 2 | 2 | 100.0% |
| June 26-27, 2003 | 5 | 3 | 3 | 60.0% |
| October 14, 2005 | 1 | 1 | 1 | 100.0% |
| October 24, 2011 | <u>2</u> | <u>2</u> | <u>2</u> | <u>100.0%</u> |
| TOTAL BILLS | 450 | 270 | 268 | 59.6% |

* line item veto

** 2 vetoes and 2 line item vetoes

TABLE 0**DISPOSITION OF SENATE BILLS FOR ALL SPECIAL SESSIONS**

| Session | Introduced | Delivered | Enacted | Percent Enacted |
|------------------------|-------------------|------------------|----------------|------------------------|
| February 8-11, 1916 | 2 | 2 | 2 | 100.0% |
| March 18-23, 1918 | 37 | 35 | 35 | 94.6% |
| December 2-4, 1919 | 0 | 0 | 0 | ----- |
| June 21-29, 1920 | 71 | 45 | 45* | 63.4% |
| June 22-July 1, 1927 | 24 | 15 | 15 | 62.5% |
| July 31-August 5, 1933 | 22 | 9 | 9 | 40.9% |
| December 21-24, 1936 | 5 | 2 | 2 | 40.0% |
| July 10-12, 1944 | 4 | 3 | 3 | 75.0% |
| February 6-16, 1950 | 12 | 10 | 10 | 83.3% |
| May 18, 1981 | 2 | 1 | 1 | 50.0% |
| September 23-24, 1981 | 4 | 1 | 1 | 25.0% |
| May 2-3, 1984 | 1 | 1 | 1 | 100.0% |
| July 16, 1987 | 2 | 2 | 2 | 100.0% |
| October 3, 1991 | 3 | 2 | 2 | 66.7% |
| November 26, 1991 | 2 | 2 | 2 | 100.0% |
| May 25, 1993 | 3 | 3 | 3 | 100.0% |
| July 11-12, 1994 | 3 | 1 | 1 | 33.3% |
| September 9, 1994 | 22 | 18 | 16** | 72.7% |
| April 14, 1997 | 1 | 0 | 0 | 0.0% |
| December 28-29, 2000 | 3 | 3 | 3 | 100.0% |
| October 23-24, 2001 | 1 | 1 | 1 | 100.0% |
| June 26-27, 2003 | 3 | 2 | 2 | 66.7% |
| October 14, 2005 | 0 | 0 | 0 | ----- |
| October 24, 2011 | 0 | 0 | 0 | ----- |
| | <u>227</u> | <u>158</u> | <u>156</u> | <u>68.7%</u> |

TABLE P

DISPOSITION OF HOUSE BILLS FOR ALL SPECIAL SESSIONS

| Session | Introduced | Delivered | Enacted | Percent Enacted |
|------------------------|-------------------|------------------|----------------|------------------------|
| February 8-11, 1916 | 4 | 1 | 1 | 25.0% |
| March 18-23, 1918 | 31 | 23 | 23 | 74.2% |
| December 2-4, 1919 | 0 | 0 | 0 | ----- |
| June 21-29, 1920 | 61 | 43 | 43 | 70.5% |
| June 22-July 1, 1927 | 16 | 6 | 6 | 37.5% |
| July 31-August 5, 1933 | 37 | 11 | 11 | 29.7% |
| December 21-24, 1936 | 9 | 1 | 1 | 11.1% |
| July 10-12, 1944 | 3 | 2 | 2 | 66.7% |
| February 6-16, 1950 | 28 | 11 | 11 | 39.3% |
| May 18, 1981 | 3 | 0 | 0 | 0.0% |
| September 23-24, 1981 | 4 | 3 | 3 | 75.0% |
| May 2-3, 1984 | 1 | 0 | 0 | 0.0% |
| July 16, 1987 | 1 | 1 | 1 | 100.0% |
| October 3, 1991 | 3 | 0 | 0 | 0.0% |
| November 26, 1991 | 0 | 0 | 0 | ----- |
| May 25, 1993 | 2 | 1 | 1 | 50.0% |
| July 11-12, 1994 | 9 | 3 | 3 | 33.3% |
| September 9, 1994 | 3 | 0 | 0 | 0.0% |
| April 14, 1997 | 1 | 1 | 1 | 100.0% |
| December 28-29, 2000 | 1 | 0 | 0 | 0.0% |
| October 23-24, 2001 | 1 | 1 | 1 | 100.0% |
| June 26-27, 2003 | 2 | 1 | 1 | 50.0% |
| October 14, 2005 | 1 | 1 | 1 | 100.0% |
| October 24, 2011 | <u>2</u> | <u>2</u> | <u>2</u> | <u>100.0%</u> |
| | 223 | 112 | 112 | 50.2% |
| TOTAL BILLS | 450 | 270 | 268 | 59.6% |

* line item veto

** 2 vetoes and 2 line item vetoes

TABLE Q

DISPOSITION OF RESOLUTIONS AND COMMEMORATIONS FOR ALL SPECIAL SESSIONS

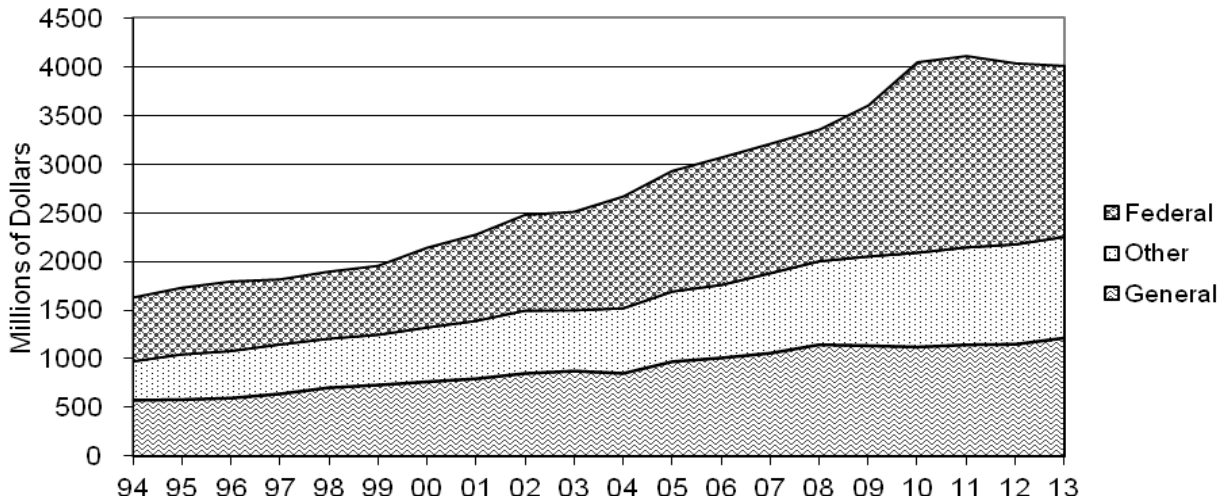
| Session | House Joint Resolutions | | Senate Joint Resolutions | |
|------------------------|--------------------------------|------------------|---------------------------------|------------------|
| | (Introduced) | (Adopted) | (Introduced) | (Adopted) |
| February 8-11, 1916 | 1 | 0 | 2 | 0 |
| March 18-23, 1918 | 2 | 2 | 7 | 6 |
| December 2-4, 1919 | 1 | 1 | 0 | 0 |
| June 21-29, 1920 | 2 | 1 | 3 | 2 |
| June 22-July 1, 1927 | 0 | 0 | 1 | 1 |
| July 31-August 5, 1933 | 2 | 0 | 0 | 0 |
| December 21-24, 1936 | 1 | 0 | 0 | 0 |
| July 10-12, 1944 | 0 | 0 | 0 | 0 |
| February 6-16, 1950 | 0 | 0 | 1 | 1 |
| May 18, 1981 | 0 | 0 | 0 | 0 |
| September 23-24, 1981 | 0 | 0 | 0 | 0 |
| May 2-3, 1984 | 0 | 0 | 0 | 0 |
| July 16, 1987 | 0 | 0 | 0 | 0 |
| October 3, 1991 | 0 | 0 | 0 | 0 |
| November 26, 1991 | 0 | 0 | 0 | 0 |
| May 25, 1993 | 0 | 0 | 0 | 0 |
| July 11-12, 1994 | 1 | 0 | 5 | 1 |
| September 9, 1994 | 0 | 0 | 0 | 0 |
| April 14, 1997 | 0 | 0 | 0 | 0 |
| December 28-29, 2000 | 1 | 0 | 1 | 1 |
| October 23-24, 2001 | 0 | 0 | 0 | 0 |
| June 26-27, 2003 | 0 | 0 | 0 | 0 |
| October 14, 2005 | 0 | 0 | 0 | 0 |
| October 24, 2011 | 0 | 0 | 0 | 0 |

| Session | House Concurrent Resolutions | | Senate Concurrent Resolutions | |
|------------------------|-------------------------------------|------------------|--------------------------------------|------------------|
| | (Introduced) | (Adopted) | (Introduced) | (Adopted) |
| February 8-11, 1916 | 0 | 0 | 0 | 0 |
| March 18-23, 1918 | 1 | 1 | 0 | 0 |
| December 2-4, 1919 | 0 | 0 | 0 | 0 |
| June 21-29, 1920 | 0 | 0 | 0 | 0 |
| June 22-July 1, 1927 | 3 | 2 | 5 | 4 |
| July 31-August 5, 1933 | 2 | 1 | 7 | 4 |
| December 21-24, 1936 | 1 | 1 | 1 | 1 |
| July 10-12, 1944 | 1 | 1 | 0 | 0 |
| February 6-16, 1950 | 0 | 0 | 2 | 2 |
| May 18, 1981 | 0 | 0 | 1 | 0 |
| September 23-24, 1981 | 0 | 0 | 0 | 0 |
| May 2-3, 1984 | 0 | 0 | 0 | 0 |
| July 16, 1987 | 0 | 0 | 1 | 0 |
| October 3, 1991 | 0 | 0 | 0 | 0 |
| November 26, 1991 | 0 | 0 | 0 | 0 |
| May 25, 1993 | 1 | 1 | 1 | 1 |
| July 11-12, 1994 | 1 | 0 | 2 | 0 |
| September 9, 1994 | 0 | 0 | 0 | 0 |
| April 14, 1997 | 0 | 0 | 2 | 2 |
| December 28-29, 2000 | 0 | 0 | 0 | 0 |
| October 23-24, 2001 | 0 | 0 | 0 | 0 |
| June 26-27, 2003 | 0 | 0 | 0 | 0 |
| October 14, 2005 | 0 | 0 | 0 | 0 |
| October 24, 2011 | 0 | 0 | 0 | 0 |

| Session | House Commemorations | | Senate Commemorations | |
|----------------|-----------------------------|------------------|------------------------------|------------------|
| | (Introduced) | (Adopted) | (Introduced) | (Adopted) |
| May 25, 1993 | 1 | 1 | 8 | 8 |

GRAPH 19

GENERAL APPROPRIATIONS ACT Funds Appropriated (FY1994-FY2013)



GRAPH 20

GENERAL APPROPRIATIONS ACT Funds Appropriated (FY2004-FY2013)

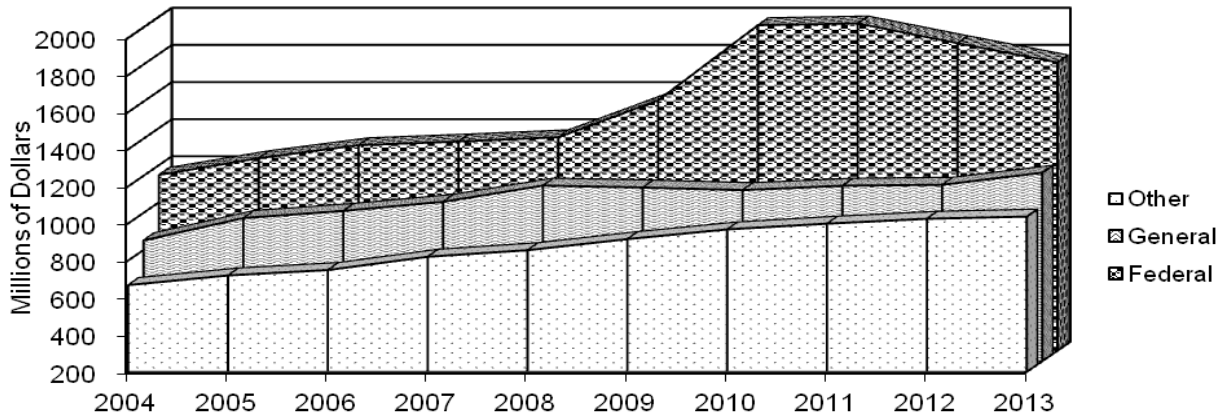


TABLE R

GENERAL APPROPRIATIONS ACT GENERAL FUNDS APPROPRIATED (FY 1891-FY 1967)

| Fiscal Year | General Fund Appropriations |
|--------------------|--|
| -1891 | \$ 438,708 |
| 1892-1893 | 745,059 |
| 1894-1895 | 834,469 |
| 1896-1897 | 744,262 |
| 1898-1899 | 763,882 |
| 1900-1901 | 879,650 |
| 1902-1903 | 1,017,170 |
| 1904-1905 | 1,265,450 |
| 1906-1907 | 1,050,575 |
| 1908-1909 | 1,639,344 |
| 1910-1911 | 1,906,314 |
| 1912-1913 | 2,199,597 |
| 1914-1915 | 2,753,410 |
| 1918-1919 | 3,400,300 |
| 1920-1921 | 5,100,976 |
| 1922-1923 | 6,394,929 |
| 1924-1925 | 7,110,522 |
| 1926-1927 | 7,953,925 |
| 1928-1929 | 6,776,270 |
| 1930-1931 | 7,290,854 |
| 1932-1933 | 6,851,843 |
| 1934-1935 | 5,044,013 |
| 1936-1937 | 5,102,501 |
| 1938-1939 | 5,596,817 |
| 1940-1941 | 5,670,070 |
| 1942-1943 | 6,039,180 |
| 1944-1945 | 7,020,940 |
| 1946-1947 | 7,901,170 |
| 1948-1949 | 10,335,475 |
| 1950-1951 | 14,440,615 |
| 1952-1953 | 17,972,740 |
| 1954-1955 | 21,479,406 |
| 1956-1957 | 24,924,600 |
| 1958-1959 | 33,163,627 |
| 1960-1961 | 33,594,102 |
| 1962-1963 | 40,889,600 |
| 1964-1965 | 49,588,678 |
| 1966-1967 | 108,858,642 |

TABLE S

**GENERAL APPROPRIATIONS ACT
FUNDS APPROPRIATED (FY 1968-FY 2013)**

| <i>Fiscal Year</i> | <i>General Funds</i> | <i>Other Funds^a</i> | <i>Federal Funds</i> | <i>Total</i> |
|--------------------|----------------------|--------------------------------|----------------------|---------------|
| 1968 | \$ 52,318,612 | \$ 42,818,964 | \$ | \$ 95,137,576 |
| 1969 | 56,553,197 | 42,670,524 | | 99,223,721 |
| 1970 | 75,377,063 | 49,483,418 | | 124,860,481 |
| 1971 | 85,410,636 | 54,137,622 | | 139,548,258 |
| 1972 | 100,987,933 | 46,774,067 | | 147,762,000 |
| 1973 | 94,217,112 | 63,790,619 | | 158,007,731 |
| 1974 | 105,404,780 | 71,055,716 | | 176,460,496 |
| 1975 | 130,101,700 | 93,082,400 | | 223,184,100 |
| 1976 | 148,747,700 | 125,828,300 | | 274,576,000 |
| 1977 | 163,685,800 | 154,329,400 | | 318,015,200 |
| 1978 | 153,862,799 | 111,177,955 | 191,925,281 | 456,966,035 |
| 1979 | 176,299,795 | 145,566,581 | 240,039,748 | 561,906,124 |
| 1980 | 147,504,470 | 170,063,909 | 253,637,640 | 571,206,019 |
| 1981 | 161,579,669 | 197,037,538 | 273,438,254 | 632,055,461 |
| 1982 | 172,055,756 | 208,445,374 | 324,559,669 | 705,060,799 |
| 1983 | 174,377,043 | 221,118,937 | 295,722,215 | 691,218,195 |
| 1984 | 178,149,248 | 222,855,037 | 308,617,414 | 709,621,699 |
| 1985 | 203,429,282 | 212,456,096 | 338,965,476 | 754,850,854 |
| 1986 | 218,843,480 | 223,998,297 | 377,829,496 | 820,671,273 |
| 1987 | 232,845,386 | 228,240,097 | 381,152,332 | 842,237,815 |
| 1988 | 235,122,964 | 238,721,107 | 396,346,231 | 870,190,302 |
| 1989 | 341,853,799 | 259,720,365 | 441,632,933 | 1,043,207,097 |
| 1990 | 400,539,825 | 300,891,200 | 456,939,983 | 1,158,371,008 |
| 1991 | 436,265,445 | 308,111,741 | 495,258,267 | 1,239,635,453 |
| 1992 | 497,950,803 | 340,385,723 | 549,288,025 | 1,387,624,551 |
| 1993 | 541,403,005 | 368,246,018 | 592,713,816 | 1,502,362,839 |
| 1994 | 574,337,802 | 399,060,914 | 655,065,237 | 1,628,463,953 |
| 1995 | 580,668,969 | 464,718,521 | 683,964,694 | 1,729,352,184 |
| 1996 | 596,260,942 | 483,608,506 | 713,544,777 | 1,793,414,225 |
| 1997 | 639,791,721 | 507,367,301 | 667,483,365 | 1,814,642,387 |
| 1998 | 703,876,993 | 502,892,326 | 688,495,268 | 1,895,264,587 |
| 1999 | 731,018,441 | 515,827,961 | 707,629,986 | 1,954,476,388 |
| 2000 ^b | 764,532,081 | 556,321,464 | 819,370,030 | 2,140,223,575 |
| 2001 ^c | 795,761,825 | 594,092,873 | 885,378,868 | 2,275,233,566 |
| 2002 ^d | 850,885,481 | 644,360,962 | 982,560,790 | 2,477,807,233 |
| 2003 | 875,000,575 | 622,670,776 | 1,011,530,371 | 2,509,201,722 |
| 2004 ^e | 851,277,150 | 667,333,054 | 1,146,903,515 | 2,665,513,719 |
| 2005 ^f | 971,660,743 | 719,318,733 | 1,237,233,507 | 2,928,212,983 |
| 2006 ^g | 1,009,980,027 | 748,493,050 | 1,307,008,887 | 3,065,481,964 |
| 2007 ^h | 1,059,223,960 | 820,045,557 | 1,327,151,561 | 3,206,421,078 |
| 2008 ⁱ | 1,146,522,479 | 855,452,511 | 1,349,933,464 | 3,351,908,454 |
| 2009 ^j | 1,136,187,623 | 915,205,715 | 1,548,760,210 | 3,600,153,548 |
| 2010 ^k | 1,127,819,469 | 938,670,146 | 1,853,072,976 | 3,919,562,591 |
| 2011 ^l | 1,145,662,738 | 998,519,418 | 1,963,509,180 | 4,107,691,336 |
| 2012 ^m | 1,150,867,146 | 1,024,674,756 | 1,857,203,151 | 4,032,745,053 |
| 2013 | 1,215,628,778 | 1,036,629,468 | 1,754,052,061 | 4,006,310,307 |

^aIncludes federal funds in FY 1968 through FY 1977

^bFY 2000 General Appropriations Act was amended in 2000 to increase General Funds from \$750,858,528 to \$764,532,081, an increase of \$13,673,553.

^cFY 2001 General Appropriations Act was amended in 2001 to increase General Funds by \$1,351,120 from \$794,410,705 to \$795,761,825 and to increase Other Funds by \$2,600,000 from \$591,492,873 to \$594,092,873

^dFY 2002 General Appropriations Act was amended in 2002 to increase General Funds by \$1,487,000 from \$849,398,481 to \$850,885,481, to increase Other Funds by \$1,122,447 from \$643,238,515 to \$644,360,962, and to increase Federal Funds by \$587,000 from \$981,973,790 to \$982,560,790.

^eFY 2004 General Appropriations Act was amended in 2003 during a Special Session to increase appropriations by \$5,516,355 from all funds. This included \$500,000 from General Funds, \$500,000 from Other Funds, and \$4,515,355 from Federal Funds. The 2004 Legislature further amended the FY2004 General Appropriations Act with a reduction of \$28,385,663 from all funds. This amendment included a reduction of \$52,484,358 from General Funds and an increase of \$24,098,695 from Federal Funds.

^fFY 2005 General Appropriations Act was amended in 2005 with an increase of \$17,421,607 from all funds. This included \$633,125 from the General Funds, \$3,258,732 from Federal Funds, and \$13,529,750 from Other Funds. A total of \$3,105,043 from all funds was reappropriated from FY 2004 to FY 2005.

^gFY 2006 General Appropriations Act was amended in 2006 with an increase of \$9,562,768 from all funds. This included \$1,208,296 from General Funds, \$4,708,072 from Federal Funds, and \$3,646,400 from Other Funds.

^hFY 2007 General Appropriations Act was amended in 2007 with an increase of \$19,551,896 from all funds. This included \$1,114,638 from General Funds, \$2,017,458 from Federal Funds, and \$16,419,800 from Other Funds.

ⁱFY 2008 General Appropriations Act was amended in 2008 with an increase of \$11,824,064 from all funds. This included an increase of \$8,807,605 from General Funds, \$3,820,000 from Federal Funds, and a decrease of \$803,541 in Other Funds.

^jFY 2009 General Appropriations Act was amended in 2009 with an increase of \$51,445,062 from all funds. This included an increase of \$117,910,306 from federal stimulus funding, an increase of \$125,000 from non-stimulus federal funding; an increase of \$5,007,393 from Other Funds; and a decrease of \$71,597,637 from General Funds.

^kFY 2010 General Appropriations Act was amended in 2010 with an increase of \$124,278,690 from all funds. This included a decrease of \$5,515,119 from General Funds, an increase of \$100,921,999 from Federal Funds, and an increase of \$28,871,810 from Other Funds.

^lFY 2011 General Appropriations Act was amended in 2011 with an increase of \$43,617,148 from all funds. This included a decrease of 15,743,913 from General Funds, an increase of \$32,774,232 from Federal Funds, and an increase of \$26, 586,829 from Other Funds.

^mFY 2012 General Appropriations Act was amended in 2012 by two separate pieces of legislation. SB 48 and HB 1137 appropriated an additional \$30,779,066 in General Funds, \$7,568,280 in Federal Funds, and \$25,016,351 in Other Funds. Additionally, the Legislature approved a transfer of \$1,000,000 from the General Fund to the Cement Plant Retirement Fund and transfer of \$5,000,000 from the General Fund to the Railroad Trust Fund.