

# Statistical Comparison



The Ninety-First Legislature  
2016



## FOREWORD

Each year the Legislative Research Council receives information requests for miscellaneous facts and figures regarding the Legislature and its committees. This document compiles some of those miscellaneous facts and figures for the Ninety-first Legislature and compares them with previous Legislatures.

If anyone has any suggestions on additional information that might be included in this document, please forward your comments to the Legislative Research Council.

Amanda Jacobs and Paul Giovanetti of the Legislative Research Council staff compiled and organized the data for this document.

This document is also available on the LRC website: [SDLegislature.gov](http://SDLegislature.gov).



# Table of Contents

<b>THE NINETY-FIRST LEGISLATURE</b>	<b>1</b>
<b>THE HOUSE OF REPRESENTATIVES</b>	<b>3</b>
House of Representatives Leadership	3
<b>THE SENATE</b>	<b>4</b>
Senate Leadership	4
Table A Number of Women Legislators	5
Table B Political Control of S.D. Governorship & Legislature (1901-2016)	6
<b>LEGISLATIVE COMMITTEES</b>	<b>9</b>
<b>THE LEGISLATIVE COMMITTEES</b>	<b>11</b>
Table C Total Number of Bills and Resolutions Referred to Committees For Years 2007 through 2016 Senate	12
Table D Total Number of Bills and Resolutions Referred to Committees For Years 2007 through 2016 House of Representatives	13
Graph 1 2016 Distribution of Bills To Senate Committees	14
Graph 2 2016 Senate Committee Workload Compared to Average Year	14
Graph 3 2016 Distribution of Bills To House Committees	15
Graph 4 2016 House Committee Workload Compared to Average Year	15
Table E Number of Standing Legislative Committees Each Session For Years 1891 through 2016	16
Graph 5 Senate Committees Number each Legislative Session	17
Graph 6 Senate Committees Number each Legislative Session	17
<b>DISPOSITION OF BILLS AND RESOLUTIONS</b>	<b>19</b>
<b>2016 DISPOSITION OF BILLS AND RESOLUTIONS</b>	<b>21</b>
Table F Disposition of Senate Bills 2016	23
Graph 7 Disposition of Senate Bills 2016	23
Table G Disposition of House Bills 2016	24
Graph 8 Disposition of House Bills 2016	24
Graph 9 Disposition of Senate Bills 2007-2016	25
Graph 10 Disposition of House Bills 2007-2016	25
Table H Disposition of Senate Bills (1890-2016)	26
Table I Disposition of House Bills (1890-2016)	29
Graph 11 Disposition of Legislative Bills 2007-2016	32
Graph 12 Vetoes 1987-2016	32
Graph 13 Senate Joint Resolutions Introduced 1987-2016	33
Graph 14 House Joint Resolutions Introduced 1987-2016	33
Table J Disposition of all Legislative Bills for Years 1890 through 2016	34

Table K Bills Vetoed by the Governor for Years 1890 through 2016	37
Table L Disposition of Joint Resolutions (1909-2016)	40
Graph 15 Senate Concurrent Resolutions Introduced 1987-2016	42
Graph 16 House Concurrent Resolutions Introduced 1987-2016	42
Graph 17 Senate Commemorations Adopted 1991-2016	43
Graph 17 House Commemorations Adopted 1991-2016	43
Table M Disposition of Concurrent Resolutions (1921-2016)	44
<b>SPECIAL SESSIONS</b>	<b>47</b>
<b>SPECIAL SESSIONS</b>	<b>49</b>
Table N Disposition of Total Bills for All Special Sessions	49
Table O Disposition of Senate Bills for All Special Sessions	50
Table P Disposition of House Bills for All Special Sessions	51
Table Q Disposition of Resolutions and Commemorations for All Special Sessions	52
<b>GENERAL APPROPRIATIONS ACT</b>	<b>55</b>
Graph 19 General Appropriations Act Funds Appropriated (FY 1998-FY 2017)	57
Graph 20 General Appropriations Act Funds Appropriated (FY2008-FY2017)	57
Table R General Appropriations Act General Funds Appropriated (FY1891-FY1967)	58
Table S General Appropriations Act Funds Appropriated (FY1968-FY2017)	59

# THE NINETY-FIRST LEGISLATURE



# THE HOUSE OF REPRESENTATIVES

There was one change in membership from the 2015 to the 2016 House of Representatives.

Representative Steve Hickey resigned his position on September 1, 2015. Representative Hickey has served in the House of Representatives for five years. Wayne Steinhauer was appointed by the Governor on Nov. 19, 2015, to serve the remainder of Representative Hickey's term.

## House of Representatives Leadership

The House of Representatives leadership for the Ninety-first legislature was as follows:

**Speaker:**

Dean Wink, Howes

**Speaker Pro Tempore:**

G. Mark Mickelson, Sioux Falls

**Majority Leader:**

Brian Gosch, Rapid City

**Minority Leader:**

Spencer Hawley, Brookings

**Assistant Majority Leader:**

Steven Westra, Sioux Falls

**Assistant Minority Leader:**

Julie Bartling, Gregory

**Majority Whips:**

Jim Bolin, Canton

Don Haggard, Sioux Falls

Kris Langer, Dell Rapids

Mike Stevens, Yankton

**Minority Whips:**

Paula Hawks, Hartford

Dean Schrempp, Lantry



## THE SENATE

There were two changes in membership from the 2015 to the 2016 Senate.

Senator Dan Lederman resigned his position on March 30, 2015. Senator Lederman had served in the Senate for five years and in the House of Representatives for two years. William Shorma was appointed by the Governor on April 30, 2015, to serve the remainder of Senator Lederman's term.

Senator Timothy Rave resigned his position on March 31, 2015. Senator Rave had served in the Senate for five years and in the House of Representatives for eight years. Senator Fiegen was appointed by the Governor on May 6, 2015, to serve the remainder of Senator Rave's term.

### Senate Leadership

The Senate leadership for the Ninety-First Legislature was as follows:

**President:**

Lt. Governor, Matt Michels, Yankton

**President Pro Tempore:**

Gary Cammack, Union Center

**Majority Leader:**

Corey Brown, Gettysburg

**Minority Leader**

Billie Sutton, Burke

**Assistant Majority Leader:**

Jim White, Huron

**Assistant Minority Leader:**

Troy Heinert, Mission

**Majority Whips:**

Ernie Otten, Tea

Deb Soholt, Sioux Falls

Alan Solano, Rapid City

**Minority Whips:**

Scott Parsley, Madison

Jim Peterson, Reville



**Table A**  
**Number of Women Legislators**

Year	House	Senate
1923	1	0
1925	4	0
1927	1	0
1929	0	0
1931	0	0
1933	1	0
1935	0	0
1937	0	1
1939	1	0
1941	0	0
1943	0	0
1945	0	0
1947	0	0
1949	0	0
1951	1	0
1953	3	0
1955	2	0
1957	1	0
1959	2	0
1961	3	0
1963	2	0
1964	2	0
1965	3	0
1967-68	2	0
1969-70	2	0
1971-72	3	0
1973-74	4	1

Year	House	Senate
1975-76	7	5
1977-78	8	2
1979-80	6	3
1981-82	8	3
1983-84	12	3
1985-86	11	4
1987	16	5
1988	17	5
1989	13	8
1990	13	7
1991-92	15	11
1993-94	14	7
1995	14	5
1996	14	6
1997-98	13	5
1999	9	5
2000	10	5
2001	11	5
2002	11	6
2003-04	13	4
2005-06	14	3
2007-08	13	5
2009	13	7
2010	14	7
2011-12	14	7
2013-2014	18	6
2015-2016	15	7

NOTE: First woman legislator: Representative Gladys Pyle (Beadle) (1923)

First woman senator: Senator Jesse Saunders (Pennington) (1937)



**Table B**  
**Political Control of S.D. Governorship & Legislature (1901-2016)**

Governor			Senate			House		
Year	Rep.	Dem.	Rep.	Dem.	Others	Rep.	Dem.	Others
1901	x		39	1	5	79	5	3
1903	x		41	3	1	76	6	5
1905	x		41	2	2	87	2	
1907	x		38	7		80	9	
1909	x		39	6		95	9	
1911	x		33	11	1	99	4	1
1913	x		33	11	1	88	14	1
1915	x		35	10		85	18	
1917	x		35	10		91	12	
1919	x		43	2		90	10	3
1921	x		44	1		94	4	5
1923	x		34	9	2	84	10	9
1925	x		34	10	1	85	11	7
1927		x	29	16		81	21	1
1929		x	33	12		83	20	
1931	x		31	14		79	24	
1933		x	16	29		33	70	
1935		x	14	31		40	63	
1937	x		22	23		66	37	
1939	x		30	5		62	13	
1941	x		31	4		65	10	
1943	x		31	4		69	6	
1945	x		35	0		72	3	
1947	x		35	0		71	4	
1949	x		27	8		64	11	
1951	x		29	6		66	9	
1953	x		35	0		73	2	
1955	x		29	6		57	18	
1957	x		18	17		48	27	
1959		x	15	20		43	32	
1961	x		23	12		57	18	
1963	x		26	9		58	17	
1965	x		18	16	1	45	30	
1967	x		29	6		64	11	

Governor			Senate			House		
1969	x		27	8		59	16	
1971		x	24	11		46	29	
1973		x	17	18		35	35	
1975		x	16	19		37	33	
1977		x	24	11		48	22	
1979	x		24	11		48	22	
1981	x		25	10		49	21	
1983	x		26	9		54	16	
1985	x		25	10		57	13	
1987	x		24	11		48	22	
1988	x		25	10		48	22	
1989	x		20	15		46	24	
1991	x		18	17		45	25	
1993	x		15	20		42	28	
1995	x		19	16		46	24	
1997	x		22	13		48	22	
1999	x		22	13		51	19	
2001	x		24	11		50	20	
2003	x		26	9		49	21	
2005	x		25	10		51	19	
2007	x		20	15		50	20	
2009	x		21	14		46	24	
2011	x		30	5		50	19	1
2013	x		28	7		53	17	
2015	x		27	8		58	12	

# LEGISLATIVE COMMITTEES



## THE LEGISLATIVE COMMITTEES

The 2016 Legislature was divided into 13 standing committees. The committees and their membership were as follows:

	Senate	House
1. Agriculture and Natural Resources	9	13
2. Appropriations	9	9
3. Commerce and Energy	7	13
4. Education	7	15
5. Government Operations and Audit	5	5
6. Health and Human Services	7	13
7. Judiciary	7	13
8. Legislative Procedure	7	7
9. Local Government	7	13
10. Retirement Laws	5	5
11. State Affairs	9	13
12. Taxation	7	15
13. Transportation	7	13

The workload of the various committees in 2016 and over the past 9 years is summarized in Table C and D on pages 12 and 13.

The number of standing committees each legislative session since 1891 is summarized in Table E on page 16.

**Table C**  
**Total Number of Bills and Resolutions Referred to Committees**  
**For Years 2007 through 2016**  
**Senate**

<b>Committee</b>	<b>2007</b>	<b>2008</b>	<b>2009</b>	<b>2010</b>	<b>2011</b>	<b>2012</b>	<b>2013</b>	<b>2014</b>	<b>2015</b>	<b>2016</b>
<b>Agriculture &amp; Natural Resources</b>	38	32	29	23	18	27	51	22	24	21
<b>Appropriations*</b>	52	60	41	36	31	46	51	57	65	76
<b>Commerce &amp; Energy</b>	51	60	53	48	51	48	47	49	44	33
<b>Education</b>	46	49	37	34	32	27	28	33	33	24
<b>Health &amp; Human Services</b>	44	24	30	24	28	35	31	25	21	26
<b>Government Operations &amp; Audit</b>	8	5	0	1	0	0	0	3	0	0
<b>Judiciary</b>	80	66	56	58	53	59	36	44	46	62
<b>Legislative Procedure</b>	0	0	0	0	0	0	0	0	0	0
<b>Local Government</b>	33	20	28	30	45	34	33	28	30	31
<b>Retirement Laws</b>	0	7	2	4	3	3	4	4	6	3
<b>State Affairs</b>	62	51	65	56	44	50	70	59	61	44
<b>Taxation</b>	32	26	24	27	15	24	22	21	17	20
<b>Transportation</b>	19	30	28	28	19	24	30	30	22	21
<b>Total By Year</b>	465	430	393	369	339	377	403	375	369	361

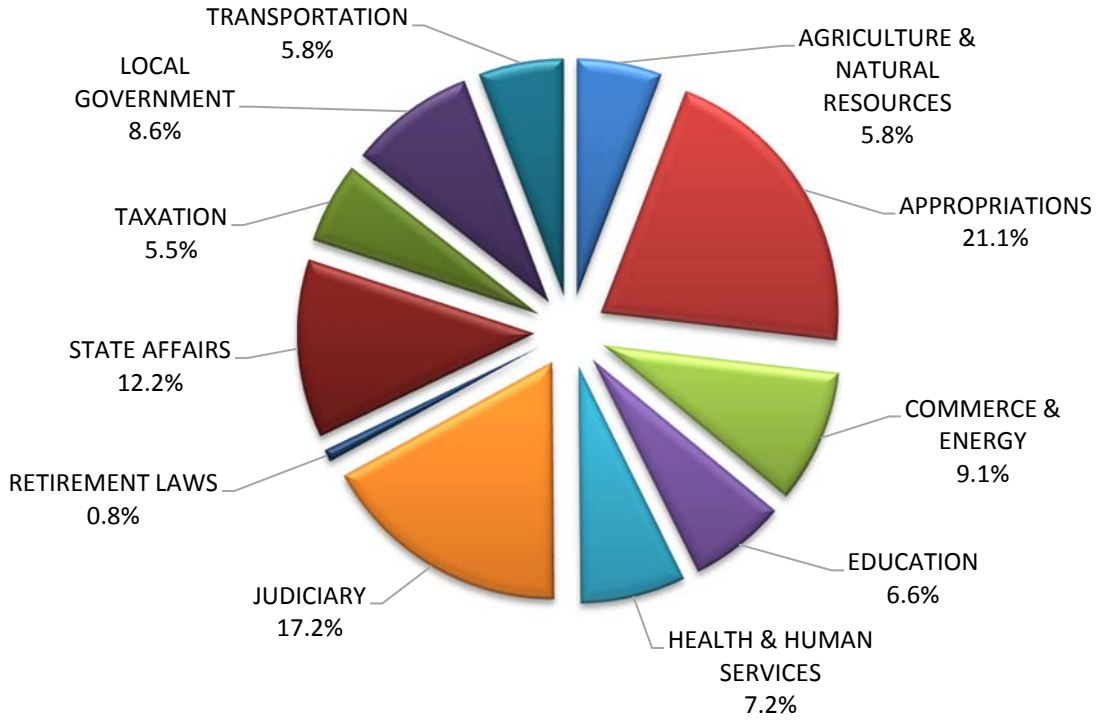
\*FY 16 Appropriations includes all bills referred to the Joint Committee on Appropriations.

**Table D**  
**Total Number of Bills and Resolutions Referred to Committees**  
**For Years 2007 through 2016**  
**House of Representatives**

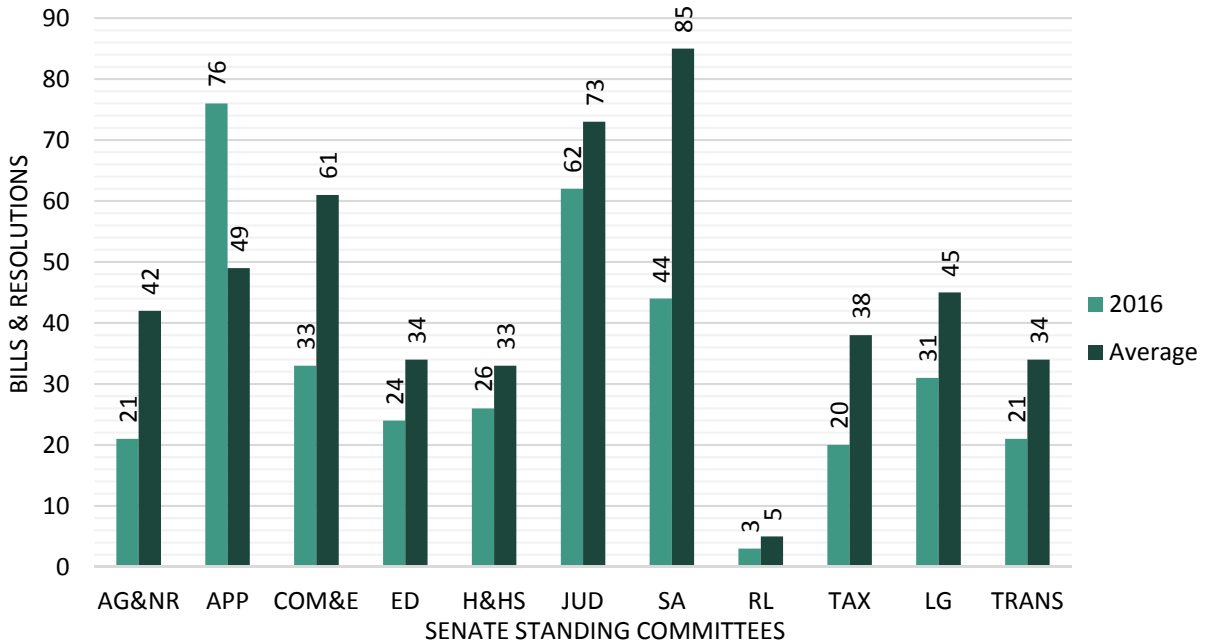
<b>Committee</b>	<b>2007</b>	<b>2008</b>	<b>2009</b>	<b>2010</b>	<b>2011</b>	<b>2012</b>	<b>2013</b>	<b>2014</b>	<b>2015</b>	<b>2016</b>
<b>Agriculture &amp; Natural Resources</b>	33	37	34	30	29	36	43	27	18	30
<b>Appropriations*</b>	55	55	49	43	42	50	32	60	56	78
<b>Commerce &amp; Energy</b>	54	67	73	51	50	46	45	43	51	38
<b>Education</b>	54	56	45	35	26	27	30	29	31	26
<b>Health &amp; Human Services</b>	33	20	22	25	27	31	29	28	22	27
<b>Government Operations &amp; Audit</b>	5	6	0	1	0	0	0	1	0	0
<b>Judiciary</b>	90	75	70	65	66	76	61	69	55	56
<b>Legislative Procedure</b>	0	0	0	0	0	0	0	0	0	0
<b>Local Government</b>	44	34	40	40	48	38	34	27	31	41
<b>Retirement Laws</b>	0	9	3	4	3	3	4	4	5	3
<b>State Affairs</b>	57	67	68	65	68	75	74	68	91	62
<b>Taxation</b>	30	22	34	37	22	27	18	25	29	24
<b>Transportation</b>	24	31	27	30	19	26	29	35	13	15
<b>Total By Year</b>	479	479	465	426	400	435	399	416	402	400

\*FY16 Appropriations includes all bills referred to the Joint Committee on Appropriations.

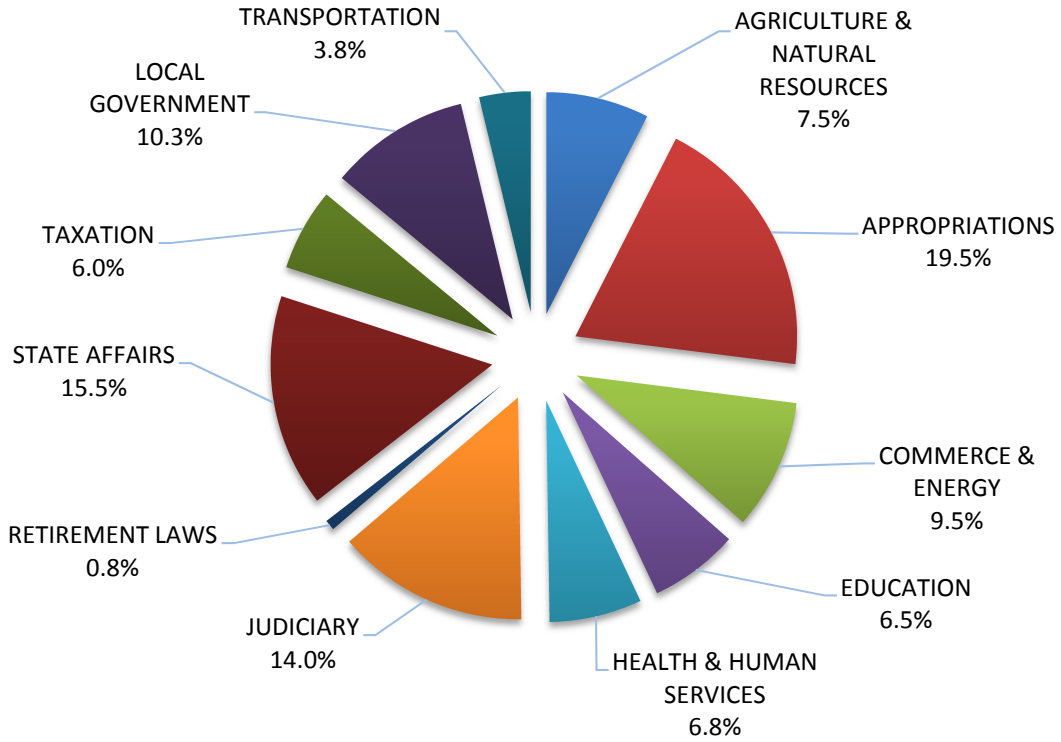
**Graph 1**  
**2016 Distribution of Bills**  
**To Senate Committees**



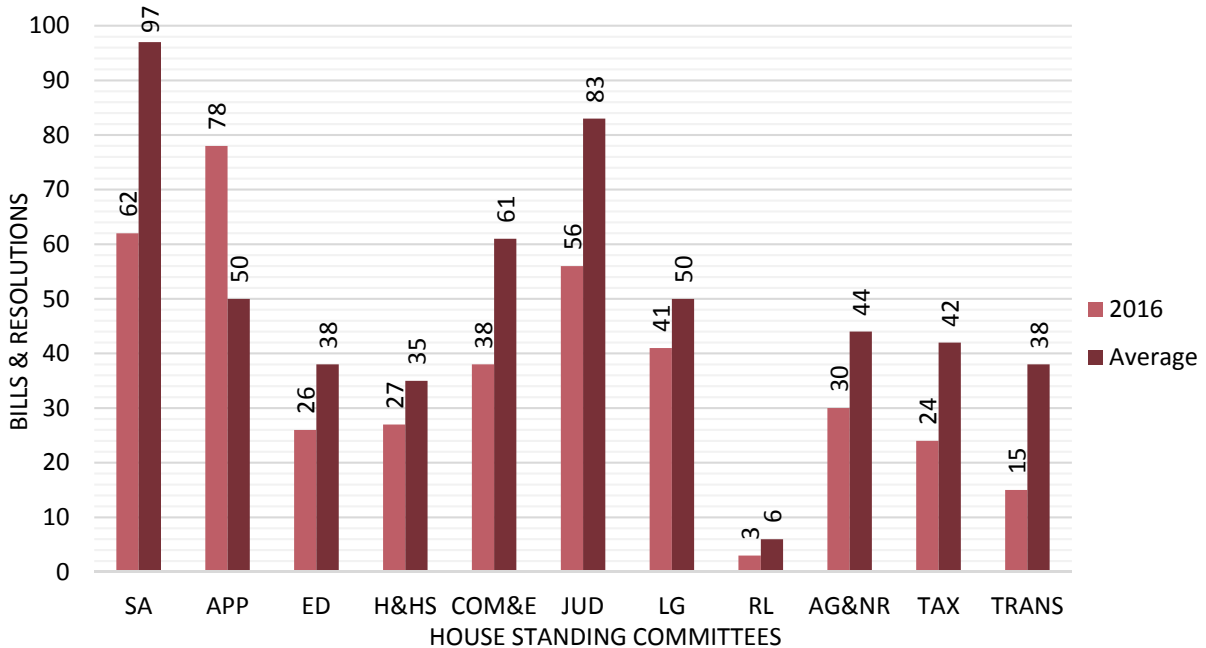
**Graph 2**  
**2016 Senate Committee Workload**  
**Compared to Average Year**



**Graph 3**  
**2016 Distribution of Bills**  
**To House Committees**



**Graph 4**  
**2016 House Committee Workload**  
**Compared to Average Year**

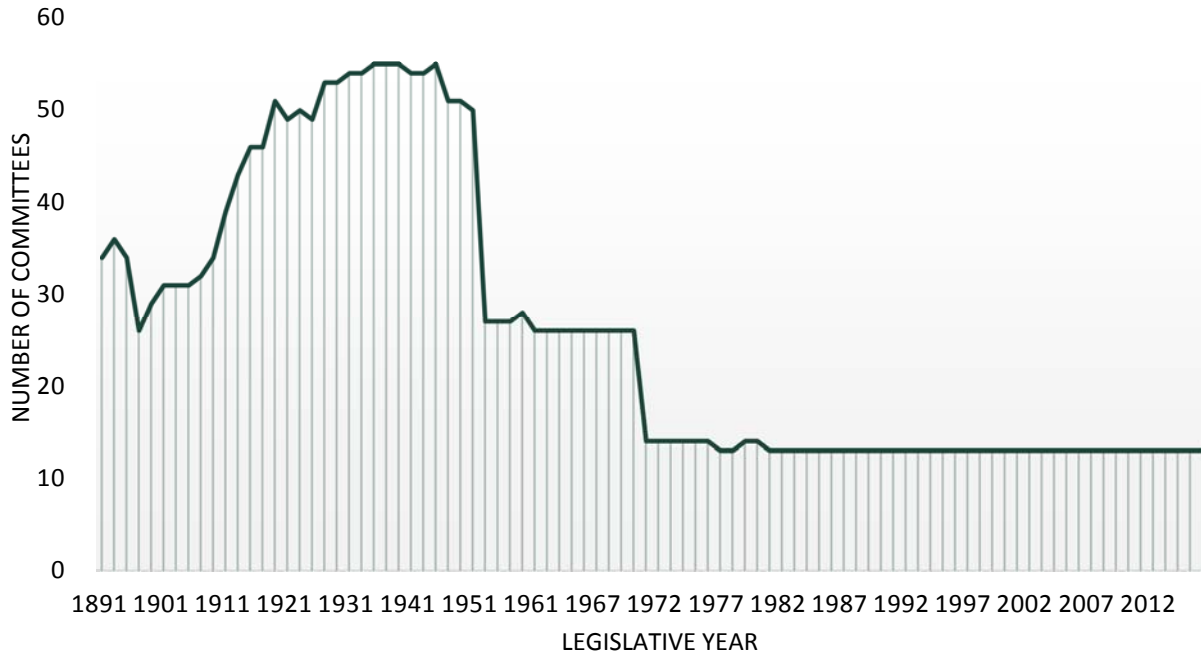




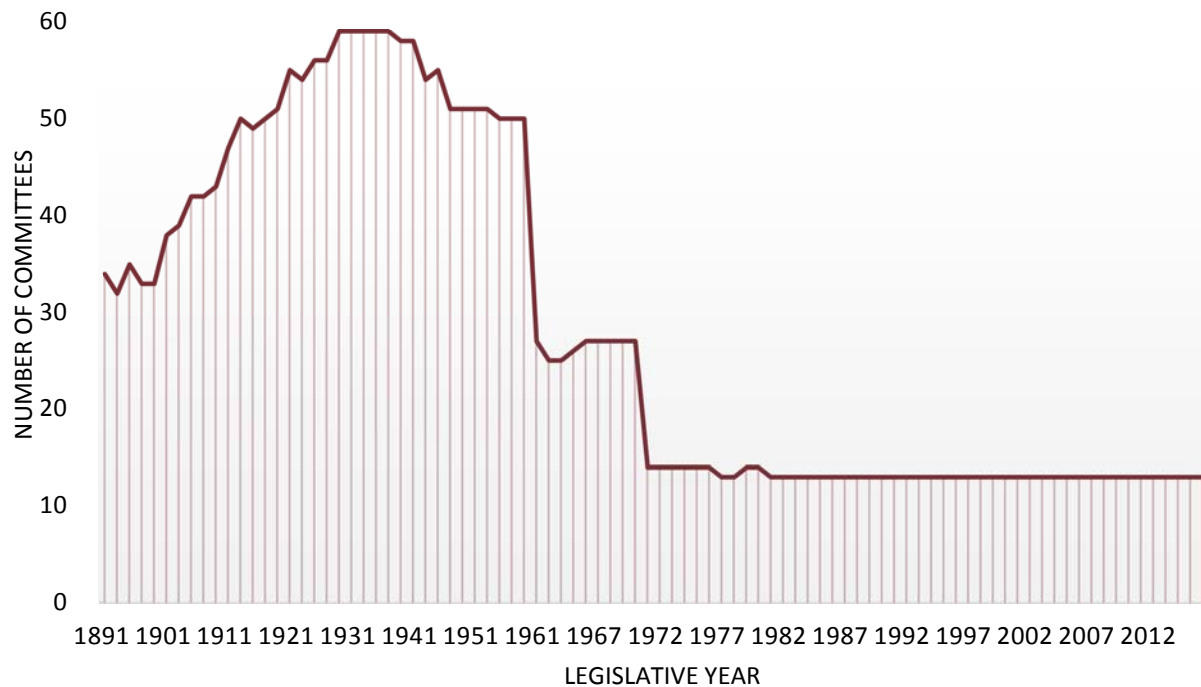
**Table E**  
**Number of Standing Legislative Committees Each Session**  
**For Years 1891 through 2016**

<b>Year</b>	<b>Senate</b>	<b>House</b>	<b>Year</b>	<b>Senate</b>	<b>House</b>	<b>Year</b>	<b>Senate</b>	<b>House</b>
1891	34	34	1957	27	50	1993	13	13
1893	36	32	1959	28	50	1994	13	13
1895	34	35	1961	26	27	1995	13	13
1897	26	33	1963	26	25	1996	13	13
1899	29	33	1964	26	25	1997	13	13
1901	31	38	1965	26	26	1998	13	13
1903	31	39	1966	26	27	1999	13	13
1905	31	42	1967	26	27	2000	13	13
1907	32	42	1968	26	27	2001	13	13
1909	34	43	1969	26	27	2002	13	13
1911	39	47	1970	26	27	2003	13	13
1913	43	50	1971	14	14	2004	13	13
1915	46	49	1972	14	14	2005	13	13
1917	46	50	1973	14	14	2006	13	13
1919	51	51	1974	14	14	2007	13	13
1921	49	55	1975	14	14	2008	13	13
1923	50	54	1976	14	14	2009	13	13
1925	49	56	1977	13	13	2010	13	13
1927	53	56	1978	13	13	2011	13	13
1929	53	59	1979	14	14	2012	13	13
1931	54	59	1980	14	14	2013	13	13
1933	54	59	1981	13	13	2014	13	13
1935	55	59	1982	13	13	2015	13	13
1937	55	59	1983	13	13	2016	13	13
1939	55	58	1984	13	13			
1941	54	58	1985	13	13			
1943	54	54	1986	13	13			
1945	55	55	1987	13	13			
1947	51	51	1988	13	13			
1949	51	51	1989	13	13			
1951	50	51	1990	13	13			
1953	27	51	1991	13	13			
1955	27	50	1992	13	13			

**Graph 5**  
**Senate Committees**  
**Number each Legislative Session**



**Graph 6**  
**Senate Committees**  
**Number each Legislative Session**



# DISPOSITION OF BILLS AND RESOLUTIONS



## **2016 DISPOSITION OF BILLS AND RESOLUTIONS**

During the 2016 Legislative Session, 419 bills were introduced. This was the fewest bills ever introduced during a session. The previous lowest number of bills introduced was 429 in 2015. This number was 10 less than in 2015 and was 147 fewer than the average number of bills previously introduced in a 40-day session. The highest number of bills ever introduced in a legislative session was in 1957 when 929 bills were introduced.

There were 172 Senate bills introduced. This was the fewest Senate bills ever introduced during a session. The number of Senate bills introduced was 21 less than in 2015 and was 74 fewer than the average number of Senate bills previously introduced in a 40-day session. The record for the highest number of Senate bills introduced in a legislative session is 405 which was set in 1913. The previous record for the fewest Senate bills was set in 2002 when only 187 Senate bills were introduced.

Two hundred forty-seven House bills were introduced. The number of House bills was 11 more than in 2015 and was 73 fewer than the average number of bills previously introduced in a 40-day session. The record for the highest number of House bills introduced in a legislative session occurred in 1957 when 576 were introduced. The fewest number of House bills ever introduced occurred in 1905 when only 212 were introduced.

Of all the bills introduced in 2016, 242 passed both houses of the Legislature and were delivered to the Governor. The Governor vetoed six bills and none of those vetoes was overridden by the Legislature. The 236 bills that became law were 79 fewer than the average number of bills previously enacted in a 40-day session and were 22 fewer than became law in 2014. The most bills ever enacted in a single session occurred in 1957 when 505 bills were enacted. The fewest bills were enacted in 1897 when only 104 bills became law.

In 2016, 56.5 percent of the bills introduced were enacted. This was above the previous average of 55.6 percent for a 40-day session. This was slightly lower than in 2015 when 60.1 percent was enacted. The highest percentage of bills ever enacted in a single session occurred in 1947 when 73.1 percent of that year's bills were enacted. The lowest percentage of bills ever enacted in a single session occurred in 1897 when only 18.6 percent of the bills were enacted. In 2016, 55.3 percent of the House bills introduced were enacted. The previous average percentage of House bills enacted in a 40-day session is 55.5 percent. Also, 58.1 percent of the Senate bills introduced were enacted. This was above the previous average percentage of Senate bills enacted in a 40-day session of 55.7 percent.

The number of bills vetoed in 2016 (5) was two fewer than the average number of bills vetoed each year. Only in the years 1933 and 1955 were no bills vetoed by the Governor. The most bills vetoed occurred in 1980 when 30 bills were vetoed.

The number of concurrent resolutions introduced in 2016 was 19. This was two more than was introduced in 2015. Fifteen of the concurrent resolutions introduced in 2016 were adopted.

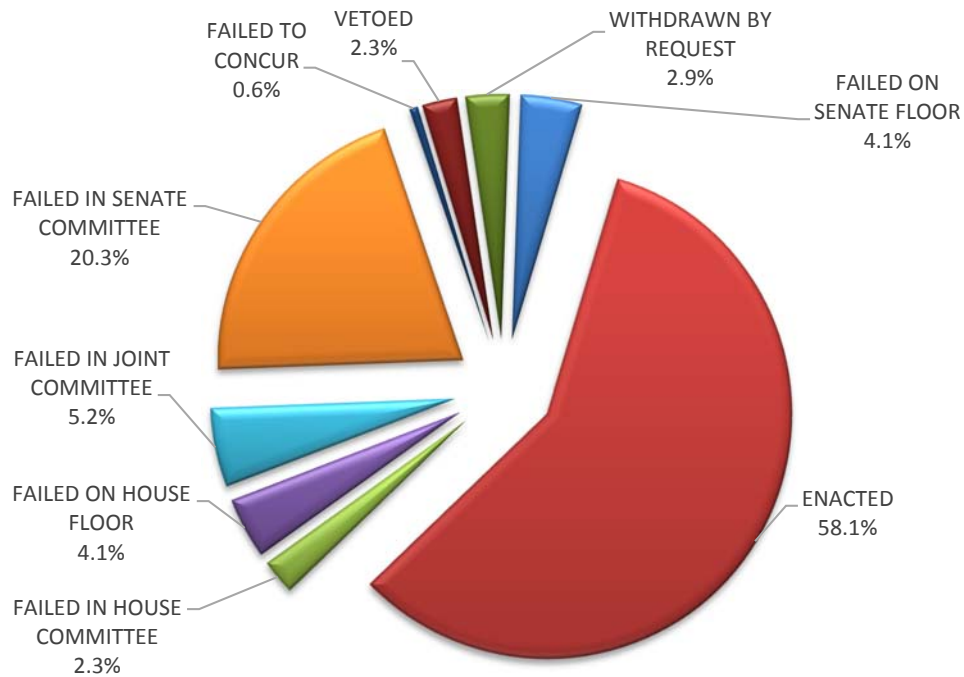
There were two House joint resolutions and four Senate joint resolution introduced in 2016. The number of joint resolutions introduced was two fewer than introduced in 2015.

There were 32 House commemorations and 17 Senate commemorations introduced and approved in the 2016 Legislature. The number of commemorations introduced was sixteen fewer than introduced in 2015. The highest number of commemorations introduced in a legislative session occurred in 2014. Since the Legislature started issuing commemorations in 1989, there has been an average of 22 Senate commemorations and 30 House commemorations each session.

**Table F**  
**Disposition of Senate Bills**  
**2016**

Failed in Senate committee	35
Failed on Senate floor	7
Failed in House committee	4
Failed on House floor	7
Failed in joint committee	9
Failed to concur	1
Vetoed	4
Withdrawn	5
Enacted	100
<b>Total</b>	<hr/> 172

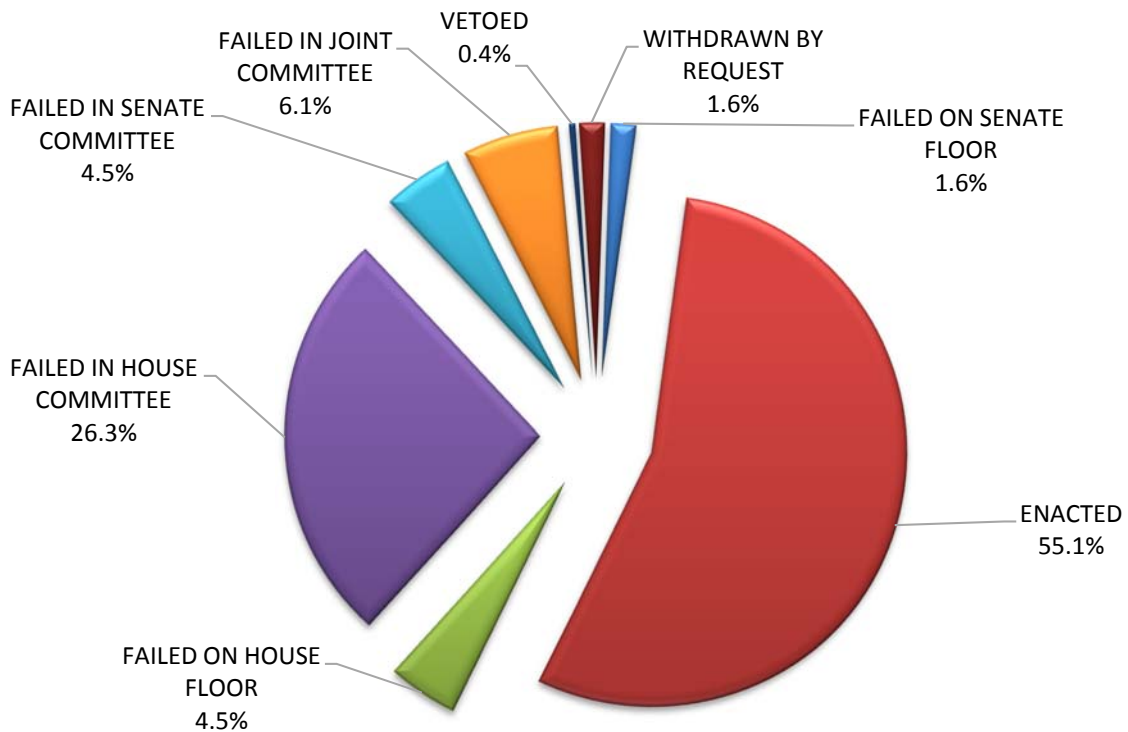
**Graph 7**  
**Disposition of Senate Bills**  
**2016**



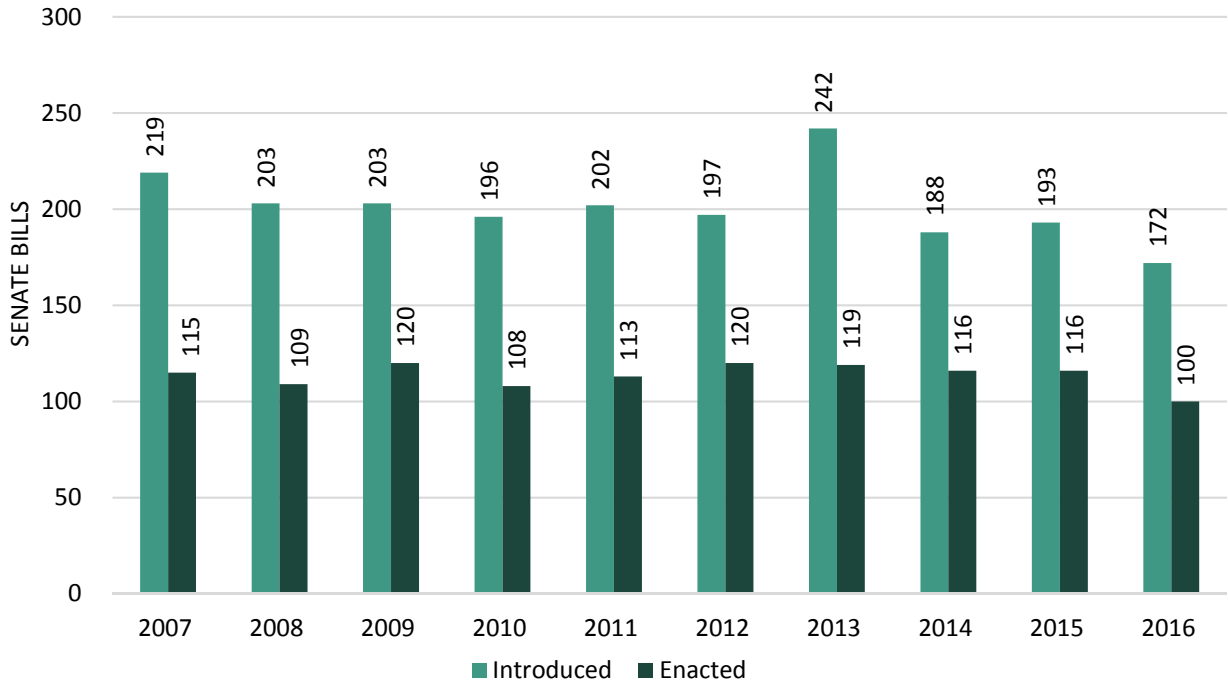
**Table G**  
**Disposition of House Bills**  
**2016**

Failed in House committee	65
Failed on House floor	11
Failed in Senate committee	11
Failed on Senate floor	4
Failed in Joint Committee	15
Withdrawn	4
Vetoed	1
Enacted	<u>136</u>
<b>Total</b>	<b>247</b>

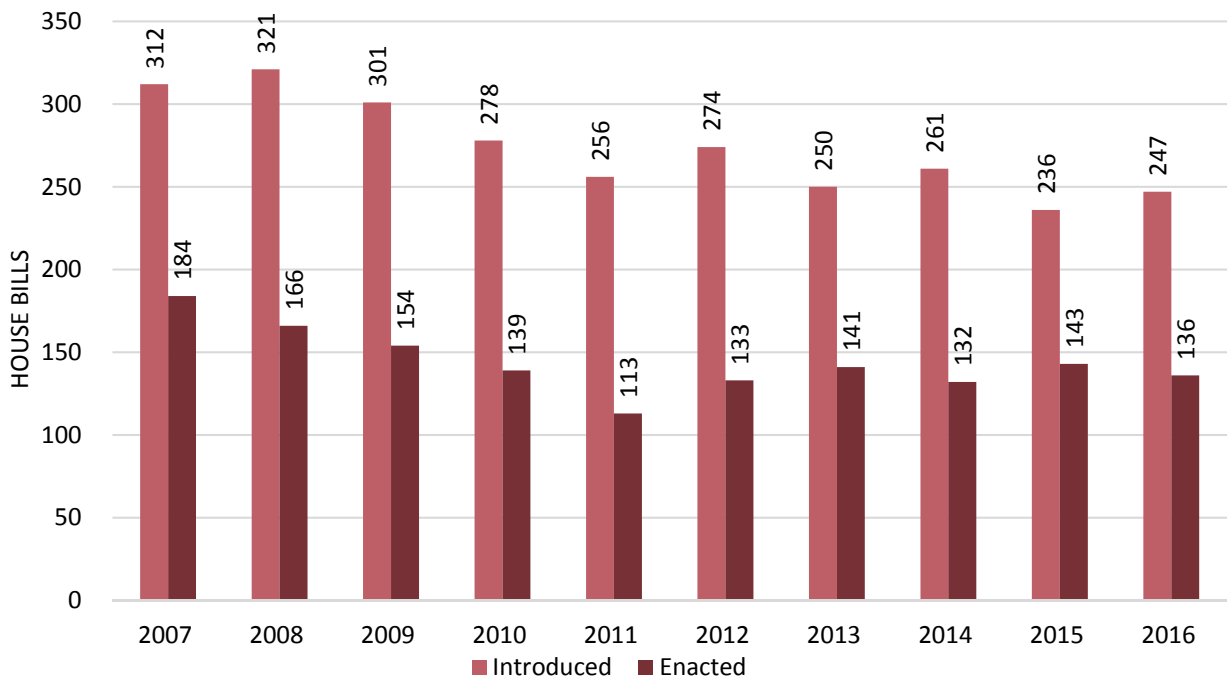
**Graph 8**  
**Disposition of House Bills**  
**2016**



**Graph 9**  
**Disposition of Senate Bills**  
**2007-2016**



**Graph 10**  
**Disposition of House Bills**  
**2007-2016**





**Table H**  
**Disposition of Senate Bills**  
**(1890-2016)**

<b>Session</b>	<b>Introduced</b>	<b>Delivered</b>	<b>Enacted</b>	<b>% Enacted</b>
1890#	270	64	60	22.2%
1891#	263	66	64	24.3%
1893#	316	106	100	31.6%
1895#	370	79	74	20.0%
1897#	249	55	52	20.9%
1899#	299	74	66	22.1%
1901#	226	86	85	37.6%
1903#	233	103	99	42.5%
1905#	245	98	94	38.4%
1907#	291	120	119	40.9%
1909#	333	127	126	37.8%
1911#	322	113	110	34.2%
1913#	405	148	135	33.3%
1915#	318	153	151	47.5%
1917#	304	166	161	53.0%
1919#	275	197	195	70.9%
1921#	348	216	209	60.1%
1923#	335	153	151	45.1%
1925#	319	179	178	55.8%
1927#	268	106	101	37.7%
1929#	231	118	115	49.8%
1931#	241	129	128	53.1%
1933#	215	98	98	45.6%
1935#	222	119	117	52.7%
1937#	283	134	131	46.3%
1939#	322	126	124	38.5%
1941#	377	194	191	50.7%
1943#	235	154	151	64.3%
1945#	299	217	217	72.6%
1947#	267	215	214	80.1%
1949#	292	217	216	74.0%
1951#	326	234	232	71.2%
1953#	351	231	228	65.0%
1955#	393	221	221	56.2%
1957#	353	165	164	46.5%
1959#	386	204	199	51.6%
1961#	372	227	220	59.1%
1963**	371	222	218	58.8%
1964*	193	111	110	57.0%
1965**	251	132	131	52.2%
1966*	200	104	103	51.5%

<b>Session</b>	<b>Introduced</b>	<b>Delivered</b>	<b>Enacted</b>	<b>% Enacted</b>
1967**	256	141	140	54.7%
1968*	213	117	114	53.5%
1969**	240	125	121	50.4%
1970*	220	113	110	50.0%
1971**	250	120	115	46.0%
1972*	278	123	120	43.2%
1973**	239	117	117	49.0%
1974*	263	154	154	58.6%
1975**	333	176	175	52.6%
1976*	274	130	125	45.6%
1977**	291	151	149	51.2%
1978*	343	165	159	46.4%
1979**	272	161	155	57.0%
1980*	256	153	141	55.1%
1981***	248	146	136	54.8%
1982****	245	159	152	62.0%
1983***	257	162	159	61.9%
1984****	223	134	128	57.4%
1985***	311	189	186	59.8%
1986****	293	184	179	61.1%
1987***	285	160	152	53.3%
1988****	348	211	204	58.6%
1989***	328	196	194	59.1%
1990****	342	181	179	52.3%
1991***	268	167	163	60.8%
1992****	273	169	166	60.8%
1993***	312	176	173	55.4%
1994****	269	149	146	54.3%
1995***	242	124	120	49.6%
1996****	287	147	142	49.5%
1997***	272	153	149	54.8%
1998****	242	139	135	55.8%
1999***	252	125	119	47.2%
2000****	209	109	109	52.2%
2001***	255	137	132	51.8%
2002****	187	102	100	53.5%
2003***	226	125	123	54.4%
2004****	218	138	136	62.4%
2005***	225	132	130	57.8%
2006****	210	121	121	57.6%
2007***	219	118	115	52.5%
2008****	203	110	109	53.7%
2009***	203	120	120	59.1%
2010***	196	110	108	55.1%
2011***	202	115	113	55.9%
2012****	197	121	120	60.9%

<b>Session</b>	<b>Introduced</b>	<b>Delivered</b>	<b>Enacted</b>	<b>% Enacted</b>
2013***	242	120	119	49.2%
2014***	188	117	116	61.7%
2015***	193	118	116	60.1%
2016***	172	104	100	58.1%

<b>Averages</b>	<b>Introduced</b>	<b>Delivered</b>	<b>Enacted</b>	<b>% Enacted</b>
# 60-Day Biennial	301	146	143	47.5%
** 45-Day Sessions	278	149	147	52.8%
* 30-Day Sessions	249	130	126	50.7%
*** 40-Day Sessions <sup>+</sup>	243	139	135	55.8%
**** 35-Day Sessions <sup>++</sup>	250	145	142	56.8%

+Includes 39-Day Session in 1985, 2010, & 2015 And 38-Day Session in 2011, 2013, 2014, & 2016

++Includes 34-Day Session in 1998 & 2000 And 33-Day Session in 2012

**Table I**  
**Disposition of House Bills**  
**(1890-2016)**

<b>Session</b>	<b>Introduced</b>	<b>Delivered</b>	<b>Enacted</b>	<b>%Enacted</b>
1890 <sup>#</sup>	362	83	82	22.7%
1891 <sup>#</sup>	307	50	48	15.6%
1893 <sup>#</sup>	266	71	71	26.7%
1895 <sup>#</sup>	352	92	90	25.6%
1897 <sup>#</sup>	310	55	52	16.8%
1899 <sup>#</sup>	272	63	60	22.1%
1901 <sup>#</sup>	282	105	100	35.5%
1903 <sup>#</sup>	297	125	124	41.8%
1905 <sup>#</sup>	212	83	79	37.3%
1907 <sup>#</sup>	303	132	130	42.9%
1909 <sup>#</sup>	423	169	169	40.0%
1911 <sup>#</sup>	416	164	154	37.0%
1913 <sup>#</sup>	497	206	205	41.2%
1915 <sup>#</sup>	398	148	144	36.2%
1917 <sup>#</sup>	427	200	198	46.4%
1919 <sup>#</sup>	281	168	168	59.8%
1921 <sup>#</sup>	370	214	209	56.5%
1923 <sup>#</sup>	334	160	159	47.6%
1925 <sup>#</sup>	287	124	123	42.9%
1927 <sup>#</sup>	271	129	122	45.0%
1929 <sup>#</sup>	292	135	133	45.5%
1931 <sup>#</sup>	328	144	141	43.0%
1933 <sup>#</sup>	314	107	107	34.1%
1935 <sup>#</sup>	225	93	91	40.4%
1937 <sup>#</sup>	262	131	128	48.9%
1939 <sup>#</sup>	318	173	171	53.8%
1941 <sup>#</sup>	389	184	179	46.0%
1943 <sup>#</sup>	248	168	166	66.9%
1945 <sup>#</sup>	218	141	139	63.8%
1947 <sup>#</sup>	310	212	208	67.1%
1949 <sup>#</sup>	353	230	226	64.0%
1951 <sup>#</sup>	365	239	237	64.9%
1953 <sup>#</sup>	444	268	267	60.1%
1955 <sup>#</sup>	422	221	221	52.4%
1957 <sup>#</sup>	576	343	341	59.2%

<b>Session</b>	<b>Introduced</b>	<b>Delivered</b>	<b>Enacted</b>	<b>%Enacted</b>
1959 <sup>#</sup>	526	268	260	49.4%
1961 <sup>#</sup>	496	257	247	49.8%
1963 <sup>**</sup>	469	253	252	53.7%
1964 <sup>*</sup>	239	123	118	49.4%
1965 <sup>**</sup>	399	186	182	45.6%
1966 <sup>*</sup>	353	165	164	46.5%
1967 <sup>**</sup>	394	218	214	54.3%
1968 <sup>*</sup>	350	166	161	46.0%
1969 <sup>**</sup>	394	171	167	42.4%
1970 <sup>*</sup>	367	195	194	52.9%
1971 <sup>**</sup>	380	193	188	49.5%
1972 <sup>*</sup>	373	175	172	46.1%
1973 <sup>**</sup>	410	238	237	57.8%
1974 <sup>*</sup>	391	229	224	57.3%
1975 <sup>**</sup>	342	175	172	50.3%
1976 <sup>*</sup>	388	203	196	50.5%
1977 <sup>**</sup>	448	270	260	58.0%
1978 <sup>*</sup>	365	215	204	55.9%
1979 <sup>**</sup>	343	201	191	55.7%
1980 <sup>*</sup>	372	228	215	57.8%
1981 <sup>***</sup>	383	245	237	61.9%
1982 <sup>****</sup>	333	222	218	65.5%
1983 <sup>***</sup>	368	239	228	62.0%
1984 <sup>****</sup>	358	218	210	58.7%
1985 <sup>***</sup>	373	213	207	55.5%
1986 <sup>****</sup>	391	250	245	62.7%
1987 <sup>***</sup>	371	238	235	63.3%
1988 <sup>****</sup>	349	213	209	59.9%
1989 <sup>***</sup>	433	256	256	59.1%
1990 <sup>****</sup>	388	235	235	60.6%
1991 <sup>***</sup>	417	258	254	60.9%
1992 <sup>****</sup>	350	203	199	56.9%
1993 <sup>***</sup>	356	212	206	57.9%
1994 <sup>****</sup>	395	254	254	64.3%
1995 <sup>***</sup>	360	185	178	49.4%
1996 <sup>****</sup>	364	168	164	45.1%
1997 <sup>***</sup>	285	159	151	53.0%
1998 <sup>****</sup>	330	165	162	49.1%
1999 <sup>***</sup>	304	142	141	46.4%

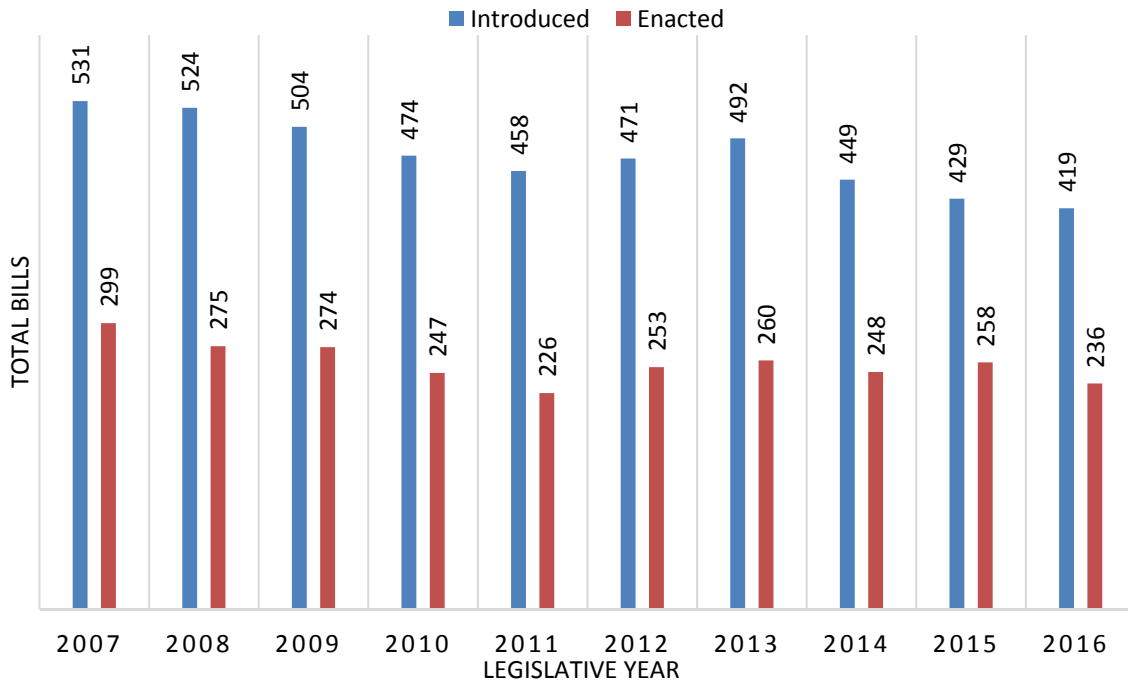
<b>Session</b>	<b>Introduced</b>	<b>Delivered</b>	<b>Enacted</b>	<b>%Enacted</b>
2000****	318	148	144	45.3%
2001***	298	166	160	53.7%
2002****	305	145	142	46.6%
2003***	284	136	135	47.5%
2004****	312	178	175	56.1%
2005***	266	158	154	57.9%
2006****	248	151	149	60.1%
2007***	312	186	184	59.0%
2008****	321	170	166	51.7%
2009***	301	155	154	51.2%
2010***	278	141	139	50.0%
2011***	256	113	113	44.1%
2012****	274	135	133	48.5%
2013***	250	141	141	56.4%
2014***	261	132	132	50.6%
2015***	236	142	142	60.2%
2016***	247	137	136	55.3%

<b>Averages</b>	<b>Introduced</b>	<b>Delivered</b>	<b>Enacted</b>	<b>% Enacted</b>
# 60-Day Biennial	345	158	155	45.1%
** 45-Day Sessions	398	212	207	52.1%
* 30-Day Sessions	355	189	183	51.5%
*** 40-Day Sessions <sup>+</sup>	316	179	175	55.5%
**** 35-Day Sessions <sup>++</sup>	336	190	187	55.7%

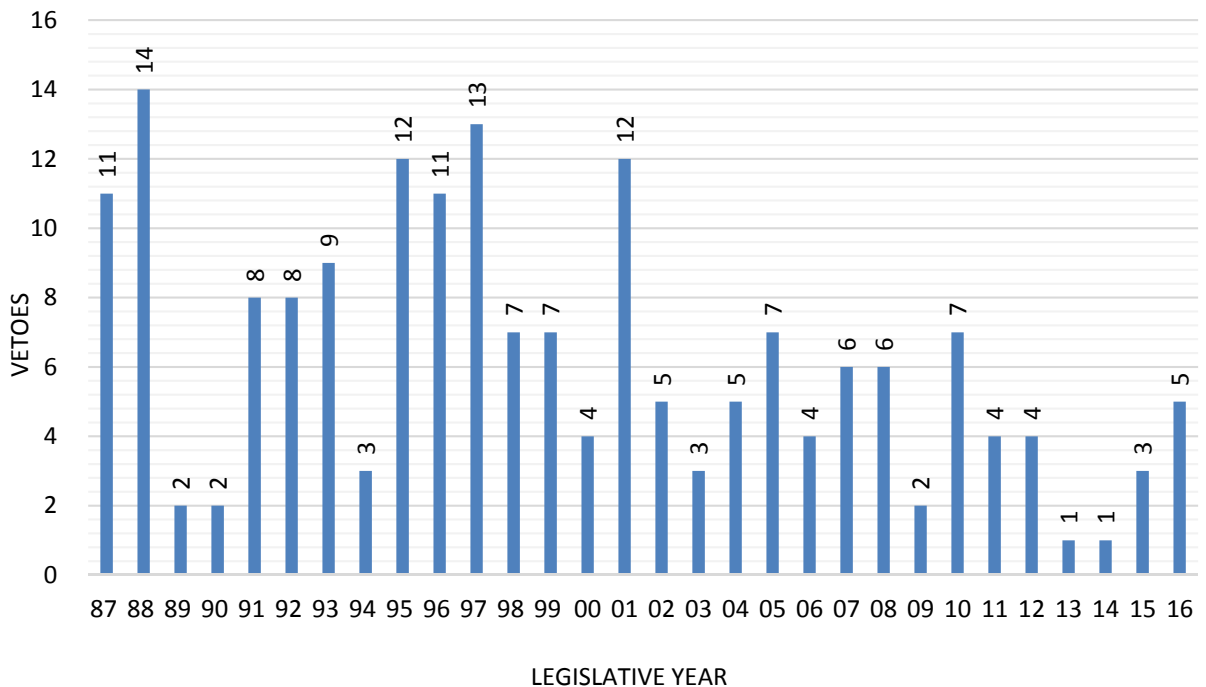
+Includes 39-Day Session in 1985, 1999, 2010, & 2015 And 38-Day Session in 2011, 2013, 2014, & 2016

++Includes 34-Day Session in 1998 & 2000 And 33-Day Session in 2012

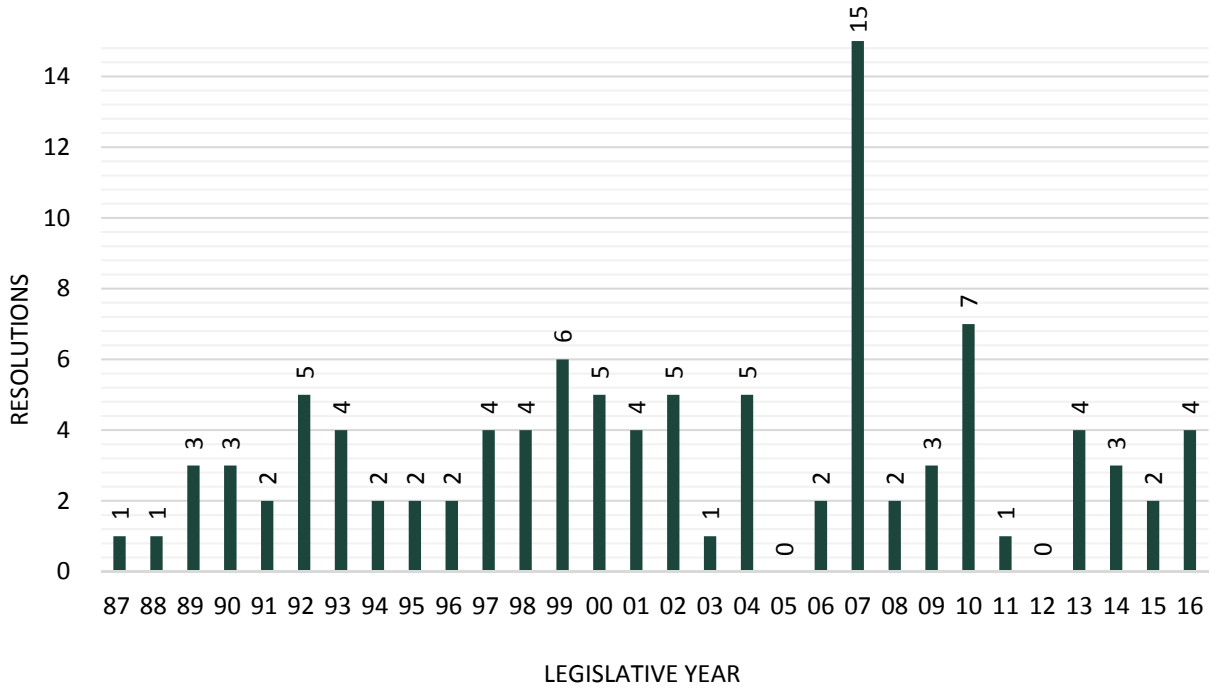
**Graph 11**  
**Disposition of Legislative Bills**  
**2007-2016**



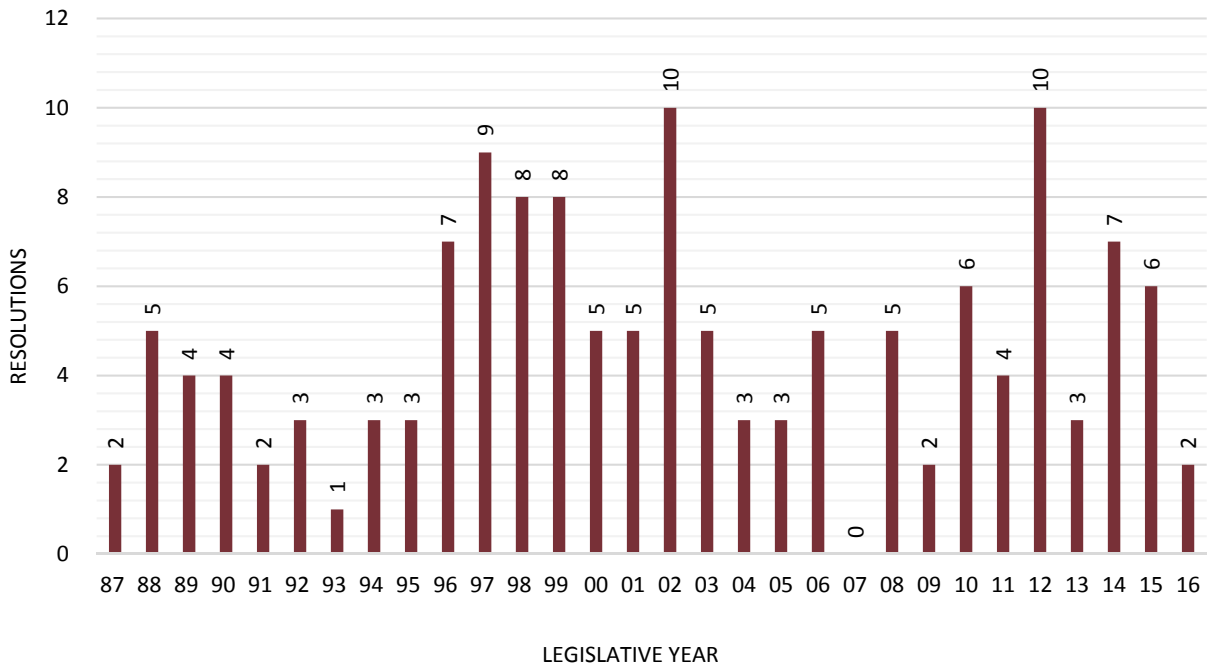
**Graph 12**  
**Vetoes**  
**1987-2016**



**Graph 13**  
**Senate Joint Resolutions**  
**Introduced 1987-2016**



**Graph 14**  
**House Joint Resolutions**  
**Introduced 1987-2016**





**Table J**  
**Disposition of all Legislative Bills for Years 1890 through 2016**

Session	Introduced	Delivered	Total Bills Vetoed <sup>a</sup>	Enacted	% Enacted
1890 <sup>#</sup>	632	147	5	142	22.5%
1891 <sup>#</sup>	570	116	4	112	19.6%
1893 <sup>#</sup>	582	177	6	171	29.4%
1895 <sup>#</sup>	722	171	7	164	22.7%
1897 <sup>#</sup>	559	110	6	104	18.6%
1899 <sup>#</sup>	571	137	11	126	22.1%
1901 <sup>#</sup>	508	191	6 <sup>b</sup>	185	36.4%
1903 <sup>#</sup>	530	228	5	223	42.1%
1905 <sup>#</sup>	457	181	8	173	37.9%
1907 <sup>#</sup>	594	252	3	249	41.9%
1909 <sup>#</sup>	756	296	1	295	39.0%
1911 <sup>#</sup>	738	277	13	264	35.8%
1913 <sup>#</sup>	902	354	14	340	37.7%
1915 <sup>#</sup>	716	301	6	295	41.2%
1917 <sup>#</sup>	731	366	7	359	49.1%
1919 <sup>#</sup>	556	365	2	363	65.3%
1921 <sup>#</sup>	718	430	12	418	58.2%
1923 <sup>#</sup>	669	313	3	310	46.3%
1925 <sup>#</sup>	606	303	2	301	49.7%
1927 <sup>#</sup>	539	235	12	223	41.4%
1929 <sup>#</sup>	523	253	5	248	47.4%
1931 <sup>#</sup>	569	273	4	269	47.3%
1933 <sup>#</sup>	529	205	0	205	38.8%
1935 <sup>#</sup>	447	212	4	208	46.5%
1937 <sup>#</sup>	545	265	6	259	47.5%
1939 <sup>#</sup>	640	299	4	295	46.1%
1941 <sup>#</sup>	766	378	8	370	48.3%
1943 <sup>#</sup>	483	322	5	317	65.6%
1945 <sup>#</sup>	517	358	3	356	68.9%
1947 <sup>#</sup>	577	427	5	422	73.1%
1949 <sup>#</sup>	645	447	5	442	68.5%
1951 <sup>#</sup>	691	473	4	469	67.9%
1953 <sup>#</sup>	795	499	4	495	62.3%
1955 <sup>#</sup>	815	442	0	442	54.2%
1957 <sup>#</sup>	929	508	3	505	54.4%
1959 <sup>#</sup>	912	472	13	459	50.3%
1961 <sup>#</sup>	868	484	17 <sup>b</sup>	467	53.8%
1963 <sup>**</sup>	840	475	5	470	56.0%
1964 <sup>*</sup>	432	234	6	228	52.8%
1965 <sup>**</sup>	650	318	5	313	48.2%
1966 <sup>*</sup>	553	269	2	267	48.3%
1967 <sup>**</sup>	650	359	6	354	54.5%

<b>Session</b>	<b>Introduced</b>	<b>Delivered</b>	<b>Total Bills Vetoed<sup>a</sup></b>	<b>Enacted</b>	<b>% Enacted</b>
1968*	563	283	8	275	48.8%
1969**	634	296	8	288	45.4%
1970*	587	308	4	304	51.8%
1971**	630	313	10	303	48.1%
1972*	651	298	6	292	44.9%
1973**	649	355	1	354	54.5%
1974*	654	383	5	378	57.8%
1975**	675	351	4	347	51.4%
1976*	662	333	12	321	48.5%
1977**	739	421	28	409	55.3%
1978*	708	380	18	363	51.3%
1979**	615	362	18	346	56.3%
1980*	628	381	31 <sup>b</sup>	356	56.7%
1981***	631	391	20	373	59.1%
1982****	578	381	11	370	64.0%
1983***	625	401	16	387	61.9%
1984****	581	352	15	338	58.2%
1985***	684	402	9	393	57.5%
1986****	684	434	13	424	62.0%
1987***	656	398	11 <sup>b</sup>	387	59.0%
1988****	697	424	14	413	59.3%
1989***	761	452	2	450	59.1%
1990****	730	416	2	414	56.7%
1991***	685	425	8	417	60.9%
1992****	623	372	8	365	58.6%
1993***	668	388	9	379	56.7%
1994****	664	403	3	400	60.2%
1995***	602	309	12 <sup>b</sup>	298	49.5%
1996****	651	315	11	306	47.0%
1997***	557	312	13	300	53.9%
1998****	572	304	7	297	51.9%
1999***	556	267	7	260	46.8%
2000****	527	257	4	253	48.0%
2001***	553	303	12	292	52.8%
2002****	492	247	5	242	49.2%
2003***	510	261	3	258	50.6%
2004****	530	316	5 <sup>b</sup>	311	58.7%
2005***	491	290	7	284	57.8%
2006****	458	272	4	270	59.0%
2007***	531	304	6	299	56.3%
2008****	524	280	6	275	52.5%
2009***	504	275	2	274	54.4%
2010***	474	251	7	247	52.1%
2011***	458	228	4	226	49.3%
2012****	471	256	4	253	53.7%
2013***	492	261	1	260	52.8%
2014***	449	249	1	248	55.2%

<b>Session</b>	<b>Introduced</b>	<b>Delivered</b>	<b>Total Bills Vetoed<sup>a</sup></b>	<b>Enacted</b>	<b>% Enacted</b>
2015***	429	260	3	258	60.1%
2016***	419	242	5	236	56.5%

a- All bills vetoes including those overridden, but doesn't include line item vetoes

b- Includes one bill returned for style and form changes but not approved by the Legislature

<b>Averages</b>	<b>Introduced</b>	<b>Delivered</b>	<b>Enacted</b>	<b>% Enacted</b>
# 60-Day Biennial	646	305	299	46.2%
** 45-Day Sessions	676	361	354	52.4%
* 30-Day Sessions	604	319	309	51.2%
*** 40-Day Sessions <sup>+</sup>	559	318	311	55.6%
**** 35-Day Sessions <sup>++</sup>	585	335	329	56.1%

+Includes 39-Day Session in 1985, 1999, 2010, & 2015 And 38-Day Session in 2011, 2013, 2014, & 2016

++Includes 34-Day Session in 1998 & 2000 And 33-Day Session in 2012

**Table K**  
**Bills Vetoed by the Governor for Years 1890 through 2016**

Session	Total Bills Vetoed <sup>a</sup>	House Bills Vetoed	Senate Bills Vetoed <sup>b</sup>	Veto Overridden	Line Item Vetoed in General Appropriations Bill
1890	5	1	4	---	0
1891	4	2	2	---	0
1893	6	0	6	---	0
1895	7	2	5	---	0
1897	6	3	3	---	4
1899	11	3	8	---	3
1901	6 <sup>c</sup>	5 <sup>c</sup>	1	---	0
1903	5	1	4	---	0
1905	8	4	4	---	0
1907	3	2	1	---	0
1909	1	0	1	---	0
1911	13	10	3	---	0
1913	14	1	13	---	0
1915	6	4	2	---	4
1917	7	2	5	---	0
1919	2	0	2	---	0
1921	12	5	7	---	0
1923	3	1	2	---	0
1925	2	1	1	---	2
1927	12	7	5	---	16 <sup>d</sup>
1929	5	2	3	---	1
1931	4	3	1	---	0
1933	0	0	0	---	0
1935	4	2	2	---	0
1937	6	3	3	---	0
1939	4	2	2	---	0
1941	8	5	3	---	0
1943	5	2	3	---	0
1945	3	3	0	---	0
1947	5	4	1	---	0
1949	5	4	1	---	0
1951	4	2	2	---	0
1953	4	1	3	---	0
1955	0	0	0	---	0
1957	3	2	1	---	0
1959	13	8	5	---	0
1961	17 <sup>c</sup>	10 <sup>c</sup>	7	---	0
1963	5	1	4	0	0
1964	6	5	1	0	0
1965	5	4	1	0	0

Session	Total Bills Vetoed <sup>a</sup>	House Bills Vetoed	Senate Bills Vetoed <sup>b</sup>	Veto Overridden	Line Item Vetoed in General Appropriations Bill
1966	2	1	1	0	0
1967	6	4	2	0	0
1968	8	5	3	0	1
1969	8	4	4	0	0
1970	4	1	3	0	0
1971	10	5	5	0	2
1972	6	3	3	0	2
1973	1	1	0	0	0
1974	5	5	0	0	1
1975	4	3	1	0	0
1976	12	7	5	0	0
1977	28	17	11	16	0
1978	18	12	6	1	0
1979	18	11	7	2	0
1980	31 <sup>c</sup>	16 <sup>c</sup>	15	6	1
1981	20	8	12	2	0
1982	11	4	7	0	0
1983	16	12	4	2	0
1984	15	9	6	2 <sup>e</sup>	1
1985	9	6	3	0	0
1986	13	6	7	3	0
1987	11 <sup>c</sup>	3	8 <sup>c</sup>	0	0
1988	14	5	9	3	15
1989	2	0	2	0	0
1990	2	0	2	0	0
1991	8	4	4	0	0
1992	8	4	4	1	5
1993	9	6	3	0	0
1994	3	0	3	0	0
1995	12 <sup>c</sup>	7	5	1	0
1996	11	4	7	2	2
1997	13	9	4	1	0
1998	7	3	4	0	0
1999	7	1	6	1 <sup>f</sup>	0
2000	4	4	0	0	0 <sup>g</sup>
2001	12	7	5	1	0
2002	5	3	2	0	0
2003	3	1	2	1 <sup>h</sup>	2 <sup>g</sup>
2004	5 <sup>c</sup>	2	3 <sup>c</sup>	0	0
2005	7	5	2	1	2 <sup>g</sup>
2006	4	4	0	2	0 <sup>g</sup>
2007	6	3	3	1	0
2008	6	5	1	1	2
2009	2	2	0	1	0

<b>Session</b>	<b>Total Bills Vetoed<sup>a</sup></b>	<b>House Bills Vetoed</b>	<b>Senate Bills Vetoed<sup>b</sup></b>	<b>Veto Override</b>	<b>Line Item Vetoed in General Appropriations Bill</b>
2010	7	4	3	3	0
2011	4	2	2 <sup>c</sup>	2	0
2012	4	3	1	1	0 <sup>g</sup>
2013	1	0	1	0	1 <sup>g</sup>
2014	1	0	1	0	0
2015	3	0	3	1	0
2016	5	1	4	0	0

a- Doesn't include line item vetoes of general appropriations bill

b- Data on veto overrides incomplete prior to 1963

c- Includes one bill returned for style and form changes but not approved by the Legislature

d- General appropriations bill not passed during regular session but was passed in a special legislative session held prior to the beginning of the fiscal year

e- Includes override of line item veto

f- Override of style and form veto

g- Doesn't include a line item veto of special appropriations bill

h- Override of line item veto of special appropriations bill

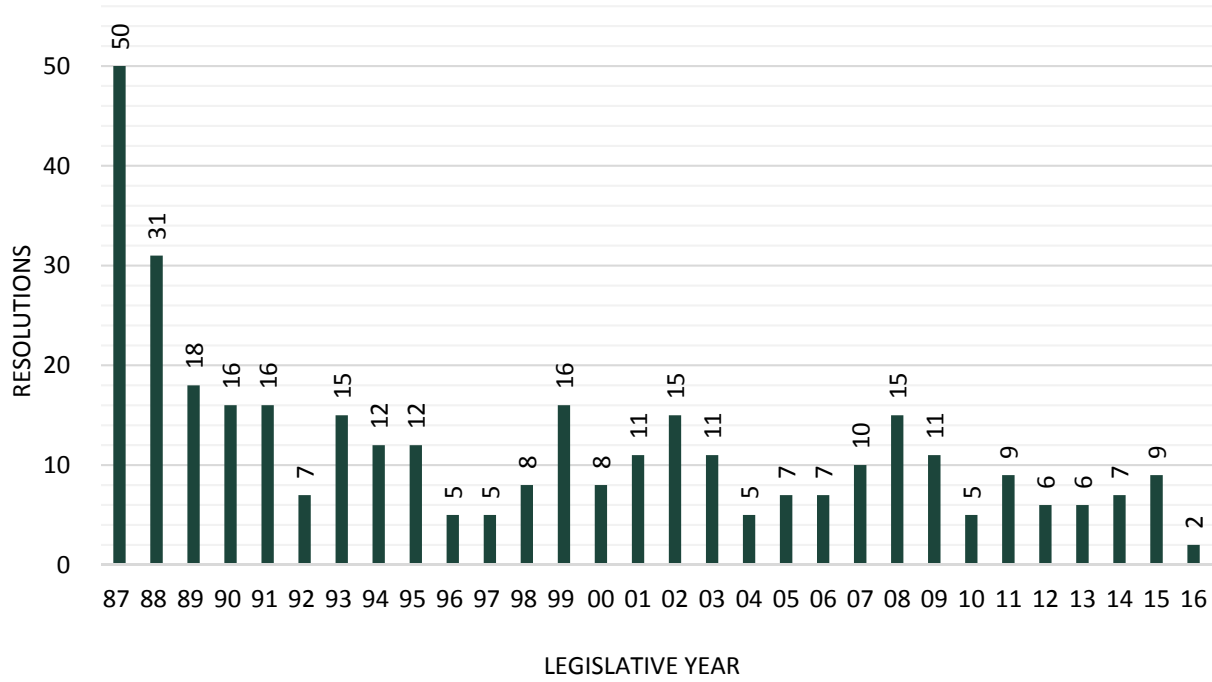
**Table L**  
**Disposition of Joint Resolutions**  
**(1909-2016)**

Session	House Joint Resolutions		Senate Joint Resolutions	
	(Introduced)	(Adopted)	(Introduced)	(Adopted)
1909	38	24	14	3
1911	16	3	25	10
1913	23	10	41	21
1915	20	8	9	4
1917	17	9	17	8
1919	5	0	6	3
1921	7	2	11	5
1923	9	2	9	2
1925	5	0	9	2
1927	3	0	7	0
1929	6	3	7	3
1931	11	2	6	0
1933	11	1	5	2
1935	11	3	8	3
1937	9	2	13	3
1939	15	4	11	1
1941	10	3	9	2
1943	7	1	2	1
1945	10	3	2	1
1947	8	4	4	1
1949	6	4	6	2
1951	2	1	4	3
1953	3	3	5	2
1955	5	1	8	1
1957	6	2	9	3
1959	8	3	13	3
1961	6	1	9	3
1963	8	1	6	3
1964	9	2	7	0
1965	8	1	7	1
1966	8	1	7	1
1967	11	0	9	2
1968	24	2	9	2
1969	7	3	6	0
1970	14	4	12	4
1971	5	1	7	1
1972	18	4	8	1
1973	2	0	3	1
1974	7	2	1	0
1975	5	1	6	3

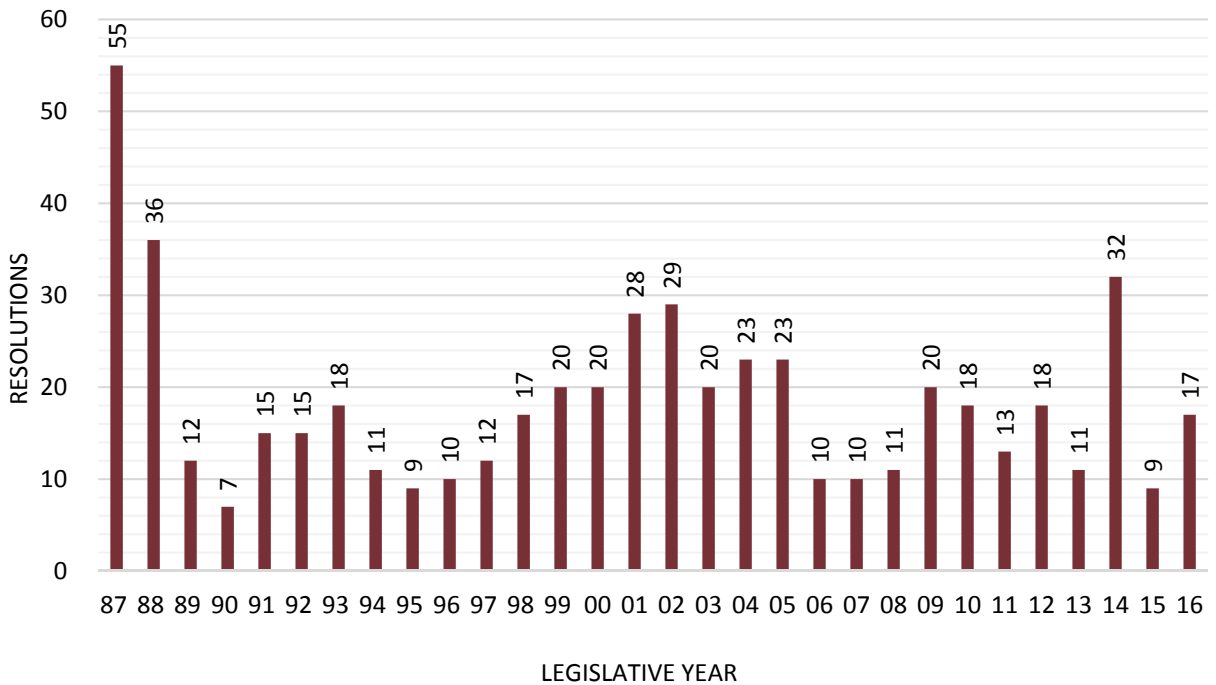
Session	House Joint Resolutions		Senate Joint Resolutions	
	(Introduced)	(Adopted)	(Introduced)	(Adopted)
1976	13	3	3	0
1977	20	14	5	0
1978	8	5	9	3
1979	6	1	5	3
1980	8	4	0	0
1981	4	0	5	0
1982	4	2	3	2
1983	0	0	0	0
1984	5	4	4	0
1985	6	4	3	1
1986	4	2	7	2
1987	2	1	1	0
1988	5	4	1	0
1989	4	1	3	2
1990	4	3	3	1
1991	2	0	2	0
1992	3	0	5	0
1993	1	1	4	3
1994	3	1	2	0
1995	3	2	2	0
1996	7	1	2	1
1997	9	3	4	0
1998	8	2	4	1
1999	8	2	6	0
2000	5	0	5	1
2001	5	0	4	1
2002	10	3	5	0
2003	5	1	1	0
2004	3	1	5	0
2005	3	1	0	0
2006	5	1	2	0
2007	0	0	15	0
2008	5	3	2	1
2009	2	0	3	0
2010	6	1	7	1
2011	4	0	1	0
2012	10	4	0	0
2013	3	0	4	0
2014	7	1	3	1
2015	6	4	2	0
2016	2	0	4	0



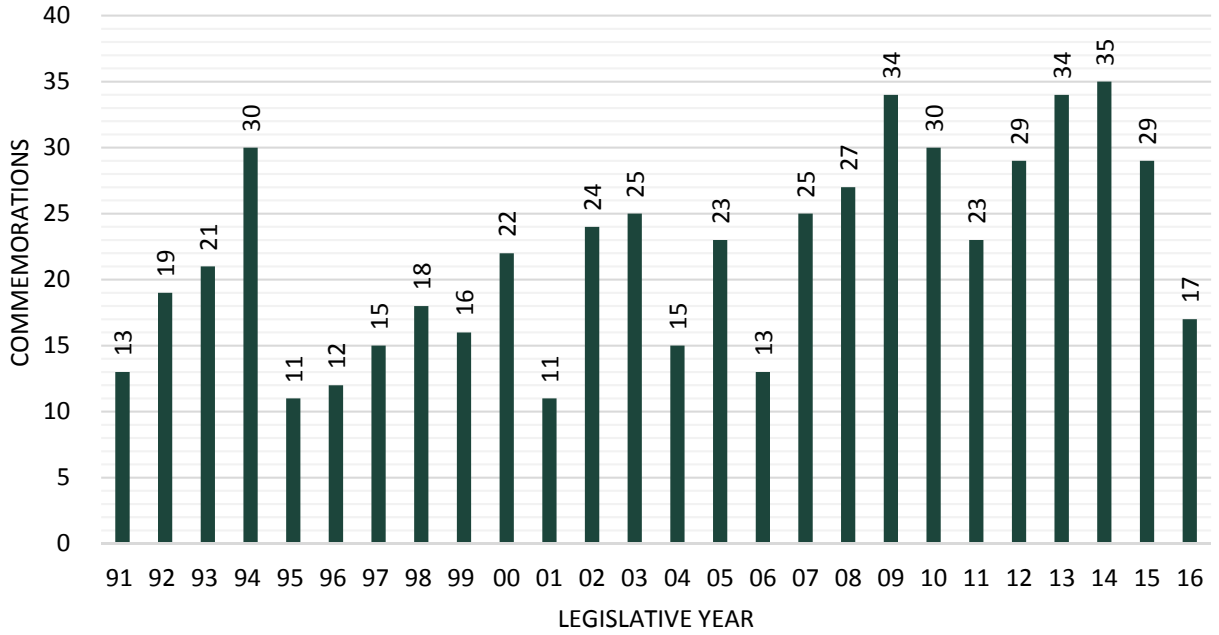
**Graph 15**  
**Senate Concurrent Resolutions**  
**Introduced 1987-2016**



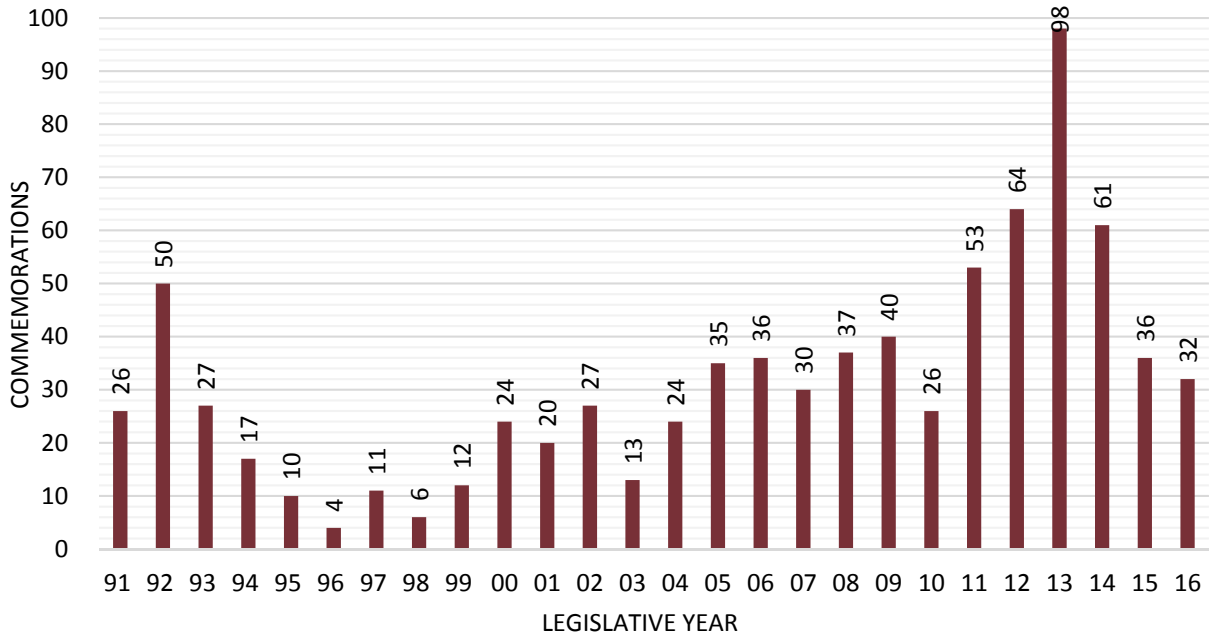
**Graph 16**  
**House Concurrent Resolutions**  
**Introduced 1987-2016**



**Graph 17**  
**Senate Commemorations**  
**Adopted 1991-2016**



**Graph 17**  
**House Commemorations**  
**Adopted 1991-2016**



**Table M**  
**Disposition of Concurrent Resolutions**  
**(1921-2016)**

Session	House Concurrent Resolutions		Senate Concurrent Resolutions	
	(Introduced)	(Adopted)	(Introduced)	(Adopted)
1921	16	N/A	12	N/A
1923	29	10	29	10
1925	11	9	16	14
1927	4	4	23	14
1929	12	9	12	9
1931	23	9	20	15
1933	13	5	5	5
1935	16	8	12	5
1937	14	13	13	10
1939	15	12	12	9
1941	14	9	13	8
1943	9	6	12	6
1945	8	4	5	2
1947	7	6	7	6
1949	7	6	13	12
1951	13	11	15	8
1953	10	5	20	10
1955	13	1	6	2
1957	8	4	11	7
1959	9	2	15	2
1961	21	15	16	11
1963	18	12	14	9
1964	6	3	9	5
1965	26	15	13	8
1966	9	6	7	4
1967	12	10	17	13
1968	8	6	14	10
1969	24	18	11	8
1970	25	12	15	6
1971	30	23	17	11
1972	29	23	9	9
1973	33	28	9	6
1974	24	24	17	11
1975	20	17	20	15
1976	21	15	26	24
1977	21	18	18	15
1978	20	19	24	18
1979	19	17	27	22
1980	34	31	18	16
1981	33	28	31	28

Session	House Concurrent Resolutions		Senate Concurrent Resolutions	
	(Introduced)	(Adopted)	(Introduced)	(Adopted)
1982	43	39	20	16
1983	58	56	34	27
1984	47	45	42	41
1985	37	33	23	21
1986	40	40	44	43
1987	55	52	50	46
1988	36	35	31	29
1989	12	9	18	15
1990	7	6	16	13
1991	15	12	16	12
1992	15	12	7	6
1993	18	15	15	8
1994	11	9	12	8
1995	9	7	12	12
1996	10	7	5	1
1997	12	8	5	4
1998	17	13	8	5
1999	20	13	16	13
2000	20	15	8	6
2001	28	13	11	9
2002	29	20	15	15
2003	20	16	11	9
2004	23	17	5	3
2005	23	18	7	7
2006	10	10	7	5
2007	10	8	10	7
2008	11	11	15	11
2009	20	16	11	9
2010	18	14	5	5
2011	13	10	9	5
2012	18	12	6	6
2013	11	11	6	4
2014	32	19	7	6
2015	9	7	8	8
2016	17	14	2	1

# SPECIAL SESSIONS



## SPECIAL SESSIONS

On October 15-17, 1889, the South Dakota Legislature met for the first time in Special Session to organize and elect officers. No bills or resolutions were addressed at that Special Session. Since then the Legislature has met in Special Session 24 times. The most recent Special Session was October 24, 2011. A summary of the number of bills, resolutions, and commemorations addressed by these Special Sessions follows.

**Table N**  
**Disposition of Total Bills for All Special Sessions**

Session	Introduced	Delivered	Enacted	% Enacted
Feb. 8-11, 1916	6	3	3	50.00%
Mar. 18-23, 1918	68	58	58	85.30%
Dec. 2-4, 1919	0	0	0	-----
Jun. 21-29, 1920	132	88	88*	66.70%
Jun. 22-Jul. 1, 1927	40	21	21	52.50%
Jul. 31-August 5, 1933	59	20	20	33.90%
Dec. 21-24, 1936	14	3	3	21.40%
Jul. 10-12, 1944	7	5	5	71.40%
Feb. 6-16, 1950	40	21	21	52.50%
May 18, 1981	5	1	1	20.00%
Sept. 23-24, 1981	8	4	4	50.00%
May 2-3, 1984	2	1	1	50.00%
Jul. 16, 1987	3	3	3	100.00%
Oct. 3, 1991	6	2	2	33.30%
Nov. 26, 1991	2	2	2	100.00%
May 25, 1993	5	4	4	80.00%
Jul. 11-12, 1994	12	4	4	33.30%
Sept. 9, 1994	25	18	16**	64.00%
Apr. 14, 1997	2	1	1	50.00%
Dec. 28-29, 2000	4	3	3	75.00%
Oct. 23-24, 2001	2	2	2	100.00%
Jun. 26-27, 2003	5	3	3	60.00%
Oct. 14, 2005	1	1	1	100.00%
Oct. 24, 2011	2	2	2	100.00%
<b>TOTAL BILLS</b>	<b>450</b>	<b>270</b>	<b>268</b>	<b>59.60%</b>

\*line item veto

\*\* 2 vetoes and 2 line item vetoes

**Table O**  
**Disposition of Senate Bills for All Special Sessions**

Session	Introduced	Delivered	Enacted	Percent Enacted
Feb. 8-11, 1916	2	2	2	100.00%
Mar. 18-23, 1918	37	35	35	94.60%
Dec. 2-4, 1919	0	0	0	-----
Jun. 21-29, 1920	71	45	45*	63.40%
Jun. 22-Jul. 1, 1927	24	15	15	62.50%
Jul. 31-Aug. 5, 1933	22	9	9	40.90%
Dec. 21-24, 1936	5	2	2	40.00%
Jul. 10-12, 1944	4	3	3	75.00%
Feb. 6-16, 1950	12	10	10	83.30%
May 18, 1981	2	1	1	50.00%
Sept. 23-24, 1981	4	1	1	25.00%
May 2-3, 1984	1	1	1	100.00%
Jul. 16, 1987	2	2	2	100.00%
Oct. 3, 1991	3	2	2	66.70%
Nov. 26, 1991	2	2	2	100.00%
May 25, 1993	3	3	3	100.00%
Jul. 11-12, 1994	3	1	1	33.30%
Sept. 9, 1994	22	18	16**	72.70%
Apr. 14, 1997	1	0	0	0.00%
Dec. 28-29, 2000	3	3	3	100.00%
Oct. 23-24, 2001	1	1	1	100.00%
Jun. 26-27, 2003	3	2	2	66.70%
Oct. 14, 2005	0	0	0	-----
Oct. 24, 2011	0	0	0	-----
	227	158	156	68.70%

\* line item veto

\*\* 2 vetoes and 2 line item vetoes

**Table P**  
**Disposition of House Bills for All Special Sessions**

Session	Introduced	Delivered	Enacted	Percent Enacted
Feb. 8-11, 1916	4	1	1	25.00%
Mar. 18-23, 1918	31	23	23	74.20%
Dec. 2-4, 1919	0	0	0	-----
Jun. 21-29, 1920	61	43	43	70.50%
Jun. 22-Jul. 1, 1927	16	6	6	37.50%
Jul. 31-Aug. 5, 1933	37	11	11	29.70%
Dec. 21-24, 1936	9	1	1	11.10%
Jul. 10-12, 1944	3	2	2	66.70%
Feb. 6-16, 1950	28	11	11	39.30%
May 18, 1981	3	0	0	0.00%
Sept. 23-24, 1981	4	3	3	75.00%
May 2-3, 1984	1	0	0	0.00%
Jul. 16, 1987	1	1	1	100.00%
Oct. 3, 1991	3	0	0	0.00%
Nov. 26, 1991	0	0	0	-----
May 25, 1993	2	1	1	50.00%
Jul. 11-12, 1994	9	3	3	33.30%
Sept. 9, 1994	3	0	0	0.00%
Apr. 14, 1997	1	1	1	100.00%
Dec. 28-29, 2000	1	0	0	0.00%
Oct. 23-24, 2001	1	1	1	100.00%
Jun. 26-27, 2003	2	1	1	50.00%
Oct. 14, 2005	1	1	1	100.00%
Oct. 24, 2011	2	2	2	100.00%
	223	112	112	50.20%

\* line item veto

\*\* 2 vetoes and 2 line item vetoes



**Table Q****Disposition of Resolutions and Commemorations for All Special Sessions**

<b>Session</b>	<b>House Joint Resolutions</b>		<b>Senate Joint Resolutions</b>	
	<b>(Introduced)</b>	<b>(Adopted)</b>	<b>(Introduced)</b>	<b>(Adopted)</b>
Feb. 8-11, 1916	1	0	2	0
Mar. 18-23, 1918	2	2	7	6
Dec. 2-4, 1919	1	1	0	0
Jun. 21-29, 1920	2	1	3	2
Jun. 22-Jul. 1, 1927	0	0	1	1
Jul. 31-Aug. 5, 1933	2	0	0	0
Dec. 21-24, 1936	1	0	0	0
Jul. 10-12, 1944	0	0	0	0
Feb. 6-16, 1950	0	0	1	1
May 18, 198	0	0	0	0
Sept. 23-24, 1981	0	0	0	0
May 2-3, 1984	0	0	0	0
Jul. 16, 1987	0	0	0	0
Oct. 3, 1991	0	0	0	0
Nov. 26, 1991	0	0	0	0
May 25, 1993	0	0	0	0
Jul. 11-12, 1994	1	0	5	1
Sept. 9, 1994	0	0	0	0
Apr. 14, 1997	0	0	0	0
Dec. 28-29, 2000	1	0	1	1
Oct. 23-24, 2001	0	0	0	0
Jun. 26-27, 2003	0	0	0	0
Oct. 14, 2005	0	0	0	0
Oct. 24, 2011	0	0	0	0

<b>Session</b>	<b>House Concurrent Resolutions</b>		<b>Senate Concurrent Resolutions</b>	
	<b>(Introduced)</b>	<b>(Adopted)</b>	<b>(Introduced)</b>	<b>(Adopted)</b>
Feb. 8-11, 1916	0	0	0	0
Mar. 18-23, 1918	1	1	0	0
Dec. 2-4, 1919	0	0	0	0
Jun. 21-29, 1920	0	0	0	0
Jun. 22-Jul. 1, 1927	3	2	5	4
Jul. 31-Aug. 5, 1933	2	1	7	4
Dec. 21-24, 1936	1	1	1	1
Jul. 10-12, 1944	1	1	0	0
Feb. 6-16, 1950	0	0	2	2
May 18, 198	0	0	1	0
Sept. 23-24, 1981	0	0	0	0
May 2-3, 1984	0	0	0	0
Jul. 16, 1987	0	0	1	0

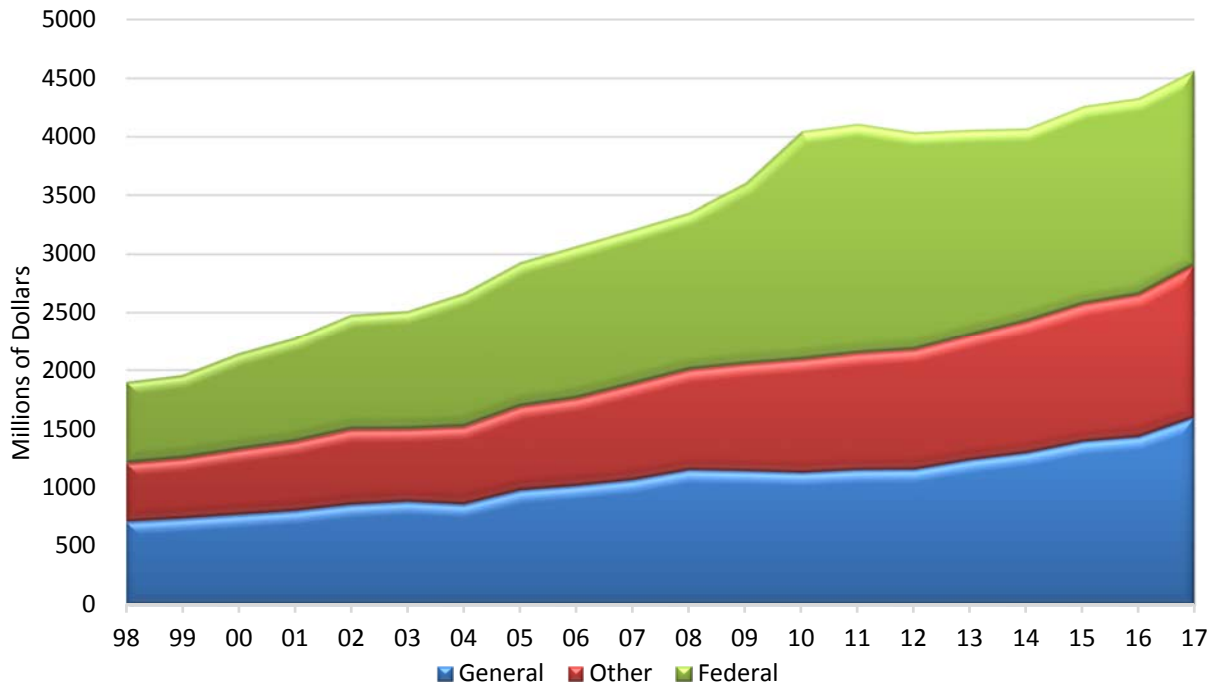
Session	House Concurrent Resolutions		Senate Concurrent Resolutions	
	(Introduced)	(Adopted)	(Introduced)	(Adopted)
Oct. 3, 1991	0	0	0	0
Nov. 26, 1991	0	0	0	0
May 25, 1993	1	1	1	1
Jul. 11-12, 1994	1	0	2	0
Sept. 9, 1994	0	0	0	0
Apr. 14, 1997	0	0	2	2
Dec. 28-29, 2000	0	0	0	0
Oct. 23-24, 2001	0	0	0	0
Jun. 26-27, 2003	0	0	0	0
Oct. 14, 2005	0	0	0	0
Oct. 24, 2011	0	0	0	0

Session	House Commemorations		Senate Commemorations	
	(Introduced)	(Adopted)	(Introduced)	(Adopted)
May 25, 1993	1	1	8	8

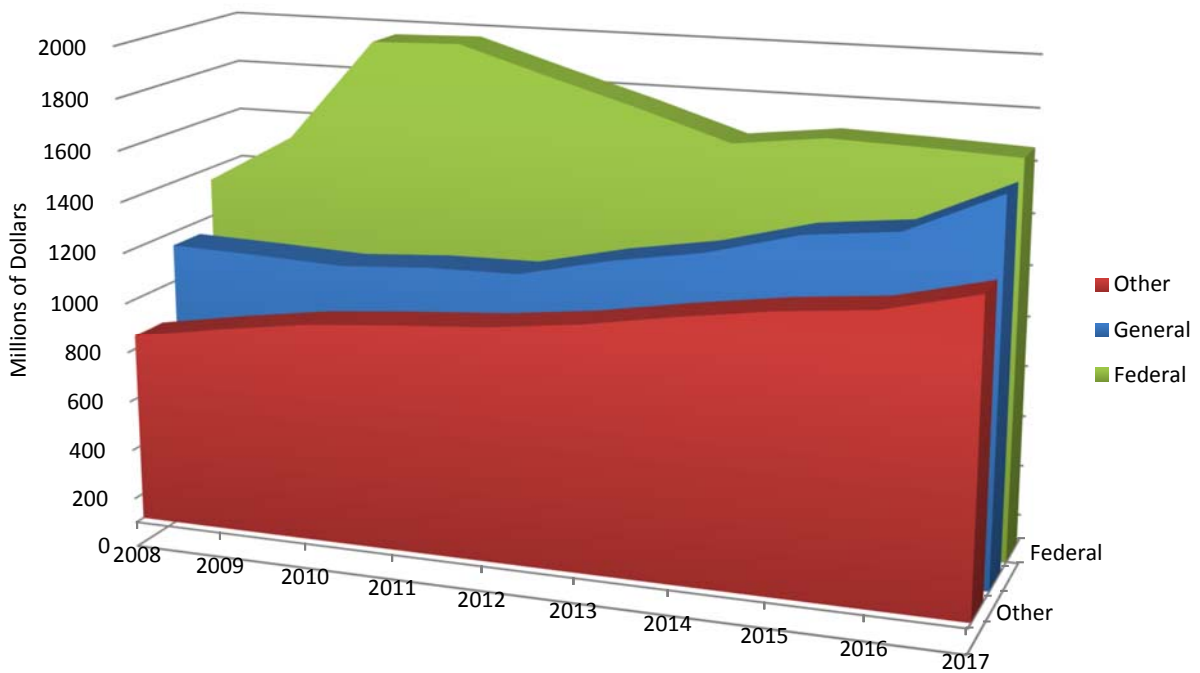
# GENERAL APPROPRIATIONS ACT



**Graph 19**  
**General Appropriations Act**  
**Funds Appropriated (FY 1998-FY 2017)**



**Graph 20**  
**General Appropriations Act**  
**Funds Appropriated (FY2008-FY2017)**



**Table R**  
**General Appropriations Act**  
**General Funds Appropriated (FY1891-FY1967)**

<b>Fiscal Year</b>	<b>General Fund Appropriations</b>	<b>Fiscal Year</b>	<b>General Fund Appropriations</b>
-1891	\$ 438,708	1930-1931	7,290,854
1892-1893	745,059	1932-1933	6,851,843
1894-1895	834,469	1934-1935	5,044,013
1896-1897	744,262	1936-1937	5,102,501
1898-1899	763,882	1938-1939	5,596,817
1900-1901	879,650	1940-1941	5,670,070
1902-1903	1,017,170	1942-1943	6,039,180
1904-1905	1,265,450	1944-1945	7,020,940
1906-1907	1,050,575	1946-1947	7,901,170
1908-1909	1,639,344	1948-1949	10,335,475
1910-1911	1,906,314	1950-1951	14,440,615
1912-1913	2,199,597	1952-1953	17,972,740
1914-1915	2,753,410	1954-1955	21,479,406
1918-1919	3,400,300	1956-1957	24,924,600
1920-1921	5,100,976	1958-1959	33,163,627
1922-1923	6,394,929	1960-1961	33,594,102
1924-1925	7,110,522	1962-1963	40,889,600
1926-1927	7,953,925	1964-1965	49,588,678
1928-1929	6,776,270	1966-1967	108,858,642

**Table S**  
**General Appropriations Act**  
**Funds Appropriated (FY1968-FY2017)**

<b>Fiscal Year</b>	<b>General Funds</b>	<b>Other Funds<sup>a</sup></b>	<b>Federal Funds</b>	<b>Total</b>
1968	\$ 52,318,612	\$ 42,818,964		\$ 95,137,576
1969	56,553,197	42,670,524		99,223,721
1970	75,377,063	49,483,418		124,860,481
1971	85,410,636	54,137,622		139,548,258
1972	100,987,933	46,774,067		147,762,000
1973	94,217,112	63,790,619		158,007,731
1974	105,404,780	71,055,716		176,460,496
1975	130,101,700	93,082,400		223,184,100
1976	148,747,700	125,828,300		274,576,000
1977	163,685,800	154,329,400		318,015,200
1978	153,862,799	111,177,955	\$ 191,925,281	456,966,035
1979	176,299,795	145,566,581	240,039,748	561,906,124
1980	147,504,470	170,063,909	253,637,640	571,206,019
1981	161,579,669	197,037,538	273,438,254	632,055,461
1982	172,055,756	208,445,374	324,559,669	705,060,799
1983	174,377,043	221,118,937	295,722,215	691,218,195
1984	178,149,248	222,855,037	308,617,414	709,621,699
1985	203,429,282	212,456,096	338,965,476	754,850,854
1986	218,843,480	223,998,297	377,829,496	820,671,273
1987	232,845,386	228,240,097	381,152,332	842,237,815
1988	235,122,964	238,721,107	396,346,231	870,190,302
1989	341,853,799	259,720,365	441,632,933	1,043,207,097
1990	400,539,825	300,891,200	456,939,983	1,158,371,008
1991	436,265,445	308,111,741	495,258,267	1,239,635,453
1992	497,950,803	340,385,723	549,288,025	1,387,624,551
1993	541,403,005	368,246,018	592,713,816	1,502,362,839
1994	574,337,802	399,060,914	655,065,237	1,628,463,953
1995	580,668,969	464,718,521	683,964,694	1,729,352,184
1996	596,260,942	483,608,506	713,544,777	1,793,414,225
1997	639,791,721	507,367,301	667,483,365	1,814,642,387
1998	703,876,993	502,892,326	688,495,268	1,895,264,587
1999	731,018,441	515,827,961	707,629,986	1,954,476,388
2000 <sup>b</sup>	764,532,081	556,321,464	819,370,030	2,140,223,575
2001 <sup>c</sup>	795,761,825	594,092,873	885,378,868	2,275,233,566
2002 <sup>d</sup>	850,885,481	644,360,962	982,560,790	2,477,807,233

<b>Fiscal Year</b>	<b>General Funds</b>	<b>Other Funds<sup>a</sup></b>	<b>Federal Funds</b>	<b>Total</b>
2003	875,000,575	622,670,776	1,011,530,371	2,509,201,722
2004 <sup>e</sup>	851,277,150	667,333,054	1,146,903,515	2,665,513,719
2005 <sup>f</sup>	971,660,743	719,318,733	1,237,233,507	2,928,212,983
2006 <sup>g</sup>	1,009,980,027	748,493,050	1,307,008,887	3,065,481,964
2007 <sup>h</sup>	1,059,223,960	820,045,557	1,327,151,561	3,206,421,078
2008 <sup>i</sup>	1,146,522,479	855,452,511	1,349,933,464	3,351,908,454
2009 <sup>j</sup>	1,136,187,623	915,205,715	1,548,760,210	3,600,153,548
2010 <sup>k</sup>	1,122,304,350	967,541,956	1,953,994,975	4,043,841,281
2011 <sup>l</sup>	1,145,662,738	998,519,418	1,963,509,180	4,107,691,336
2012 <sup>m</sup>	1,150,867,146	1,024,674,756	1,857,203,151	4,032,745,053
2013 <sup>n</sup>	1,232,361,618	1,068,340,191	1,754,950,330	4,055,652,139
2014 <sup>o</sup>	1,293,068,278	1,130,054,687	1,643,807,414	4,066,930,379
2015 <sup>p</sup>	1,372,395,933	1,225,264,238	1,679,576,551	4,277,236,722
2016 <sup>q</sup>	1,429,990,456	1,220,850,946	1,675,861,718	4,326,703,120
2017	1,594,982,921	1,309,939,419	1,661,085,224	4,566,007,564

- a. Includes federal funds in FY 1968 through FY 1977
- b. FY 2000 General Appropriations Act was amended by the 2000 Legislature to increase General Funds from \$750,858,528 to \$764,532,081, an increase of \$13,673,553.
- c. FY 2001 General Appropriations Act was amended by the 2001 Legislature to increase General Funds by \$1,351,120 from \$794,410,705 to \$795,761,825 and to increase Other Funds by \$2,600,000 from \$591,492,873 to \$594,092,873
- d. FY 2002 General Appropriations Act was amended by the 2002 Legislature to increase General Funds by \$1,487,000 from \$849,398,481 to \$850,885,481, to increase Other Funds by \$1,122,447 from \$643,238,515 to \$644,360,962, and to increase Federal Funds by \$587,000 from \$981,973,790 to \$982,560,790.
- e. FY 2004 General Appropriations Act was amended by the 2003 Legislature during its Special Session to increase appropriations by \$5,516,355 from all funds. This included \$500,000 from General Funds, \$500,000 from Other Funds, and \$4,515,355 from Federal Funds. The 2004 Legislature further amended the FY2004 General Appropriations Act by reducing appropriations by a net \$28,385,663 from all funds. This included a reduction of \$52,484,358 from General Funds and an increase of \$24,098,695 from Federal Funds.
- f. FY 2005 General Appropriations Act was amended by the 2005 Legislature by increasing appropriations by a net \$17,421,607 from all funds. This included \$633,125 from the General Funds, \$3,258,732 from Federal Funds, and \$13,529,750 from Other Funds. A total of \$3,105,043 from all funds was reappropriated from FY 2004 to FY 2005.
- g. FY 2006 General Appropriations Act was amended by the 2006 Legislature by increasing appropriations by \$9,562,768 from all funds. This included \$1,208,296 from General Funds, \$4,708,072 from Federal Funds, and \$3,646,400 from Other Funds.
- h. FY 2007 General Appropriations Act was amended by the 2007 Legislature by increasing appropriations by \$19,551,896 from all funds. This included \$1,114,638 from General Funds, \$2,017,458 from Federal Funds, and \$16,419,800 from Other Funds.
- i. FY 2008 General Appropriations Act was amended by the 2008 Legislature by increasing appropriations by \$11,824,064 from all funds. This included an increase of \$8,807,605 from General Funds, \$3,820,000 from Federal Funds, and a decrease of \$803,541 in Other Funds.
- j. FY 2009 General Appropriations Act was amended by the 2009 Legislature by increasing appropriations by \$51,445,062 from all funds. This included an increase of \$117,910,306 from federal stimulus funding, an increase of \$125,000 from non-stimulus federal funding; an increase of \$5,007,393 from Other Funds; and a decrease of \$71,597,637 from General Funds.
- k. FY2010 General Appropriations Act was amended in 2010 with an increase of \$124,278,690 from all funds. This included a decrease of \$5,515,119 from General Funds, an increase of \$100,921,999 from Federal Funds, and an increase of \$28,871,810 from Other Funds.
- l. FY 2011 General Appropriations Act was amended in 2011 with an increase of \$43,617,148 from all funds. This included a decrease of \$5,743,913 from General Funds, an increase of \$32,774,232 from Federal Funds, and an increase of \$26,586,829 from Other Funds.
- m. FY 2012 General Appropriations Act was amended in 2012 by two separate pieces of legislation, SB 48 and HB 1137 appropriated an additional \$30,779,066 in General Funds, \$7,568,280 in Federal Funds, and \$25,016,351 in Other Funds. Additionally, the Legislature approved a transfer of \$1,000,000 from the General Fund to the Cement Plant Retirement Fund and transfer of \$5,000,000 from the General Fund to the Railroad Trust Fund.

- n. FY 2013 General Appropriations Act was amended in 2013 by two separate pieces of legislation. SB 90 and HB 1060 appropriated an additional \$23,311,489 in General Funds, \$4,610,380 in Federal Funds, and \$21,444,473 in Other Funds. Additionally, the Legislature approved transfers from the General Fund of \$2,000,000 to the South Dakota Cement Plant Retirement Fund, \$500,000 for Research Commerce Grants, \$2,000,000 for Future Fund Grants, and \$1,000,000 to the Tobacco Reduction and Prevention Fund.
- o. FY 2014 General Appropriations Act was amended in 2014 by HB 1040 which reduced the General Fund appropriation by \$19,515,229 reduced the Federal Fund appropriation by \$34,287,743 and increased the other fund spending authority by \$13,718,844. The reductions were the result of lower Medicaid numbers, lower state aid to education figures, and the establishment of a contingency fund for the Medicaid program (SB 177).
- p. FY 2015 General Appropriations Act was amended in 2015 by SB 55 which reduced the General Fund appropriation by \$16,560,657, reduced the Federal Fund appropriation by \$3,872,289, and increased the other fund spending authority by \$38,977,625.
- q. FY 2016 General Appropriations Act was amended in 2016 by SB48 which reduced the General Fund appropriation by \$12,949,699, reduced the Federal fund appropriation by \$3,435,906, and increased the other fund spending authority by \$6,747,644.