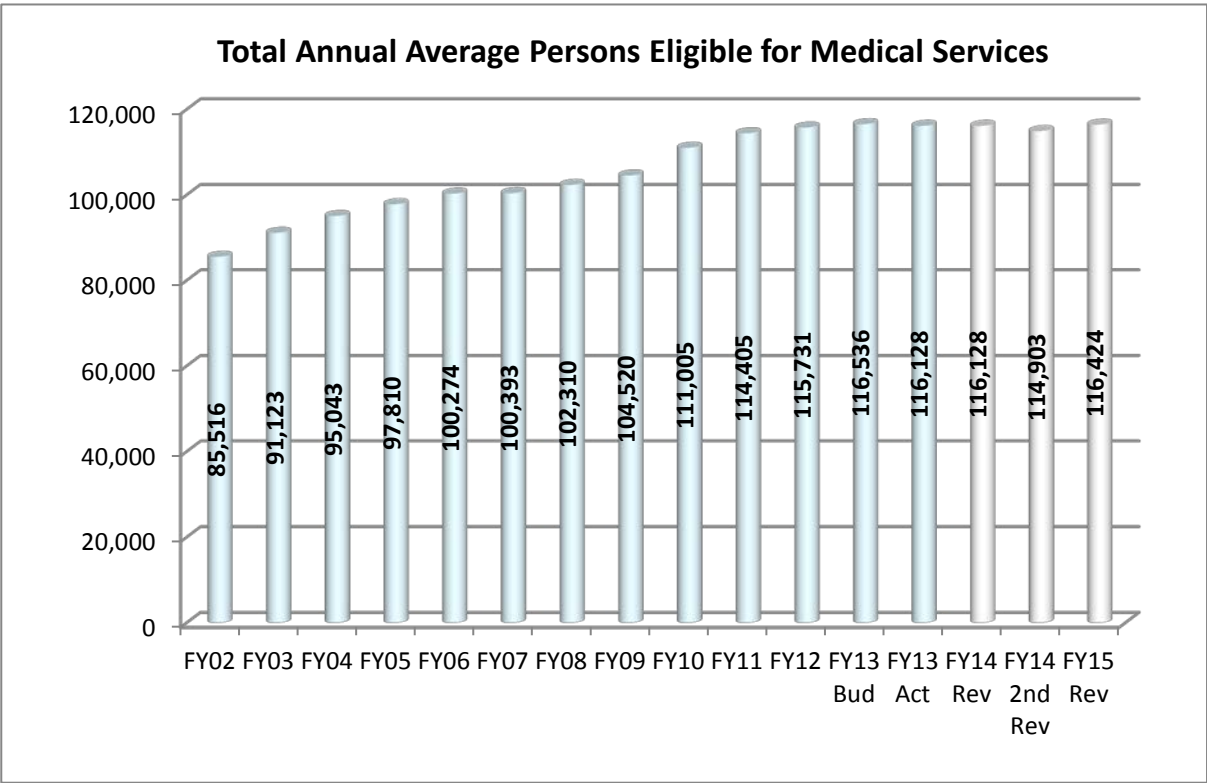
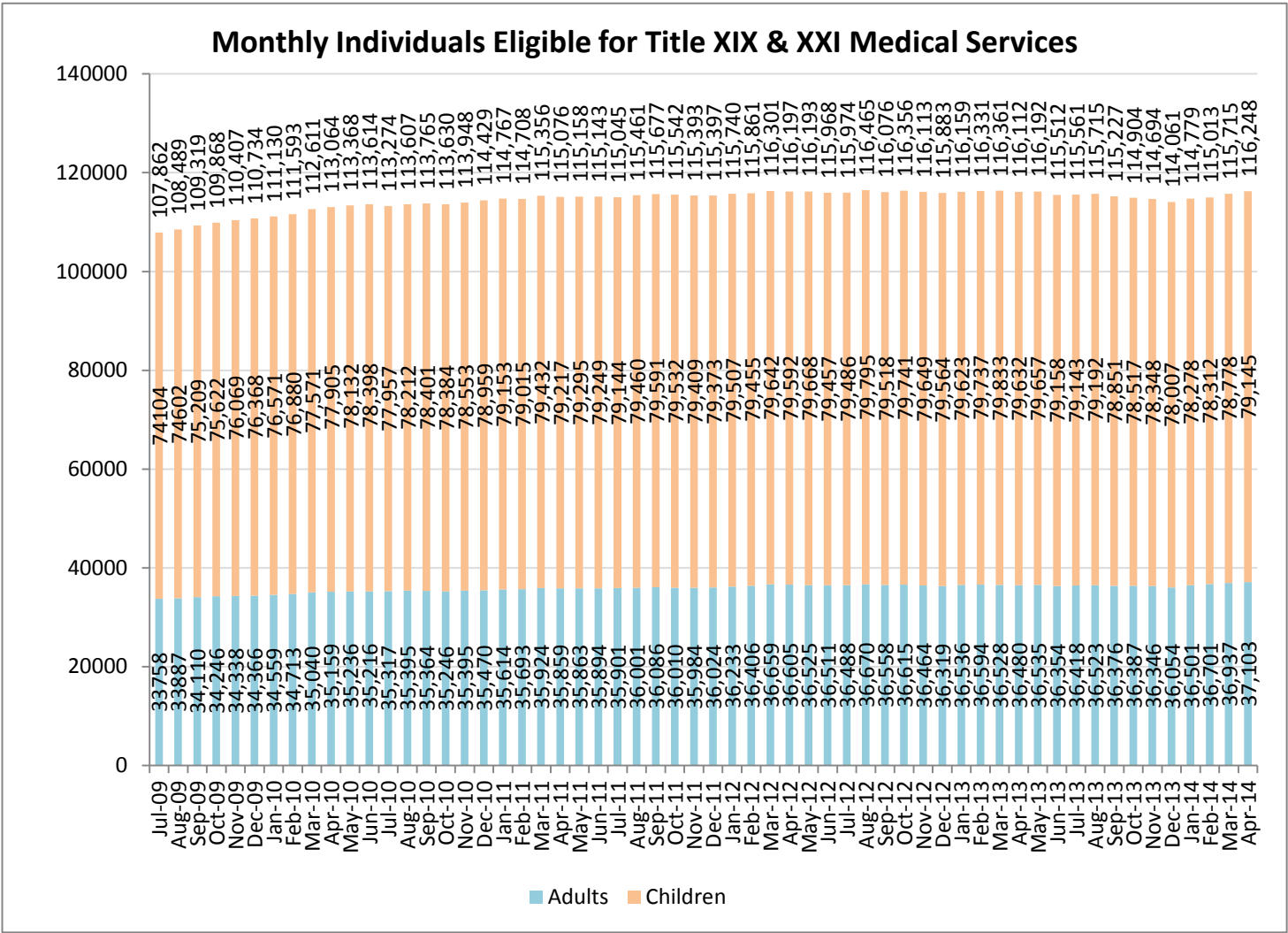


Medical Services (Title XIX & XXI) Eligible Data - April 2014



Monthly Expenditure Data

April 2014

Medical Eligibles and Recipient data:

Represents all departments that utilize Medicaid and SCHIP funds.

	Total	Medicaid	SCHIP
Eligibles	116,248	105,341	10,907
Recipients*	65,748	60,720	5,028
Recipients as percent of Eligibles	57%	58%	46%
Expenditures a/	\$74,410,568	\$72,346,998	\$2,063,570
Expenditures per Eligible	\$640	\$687	\$189
Expenditures per Recipient	\$1,132	\$1,191	\$410

*Recipient is an eligible individual that has had at least one medical service paid for during the month.

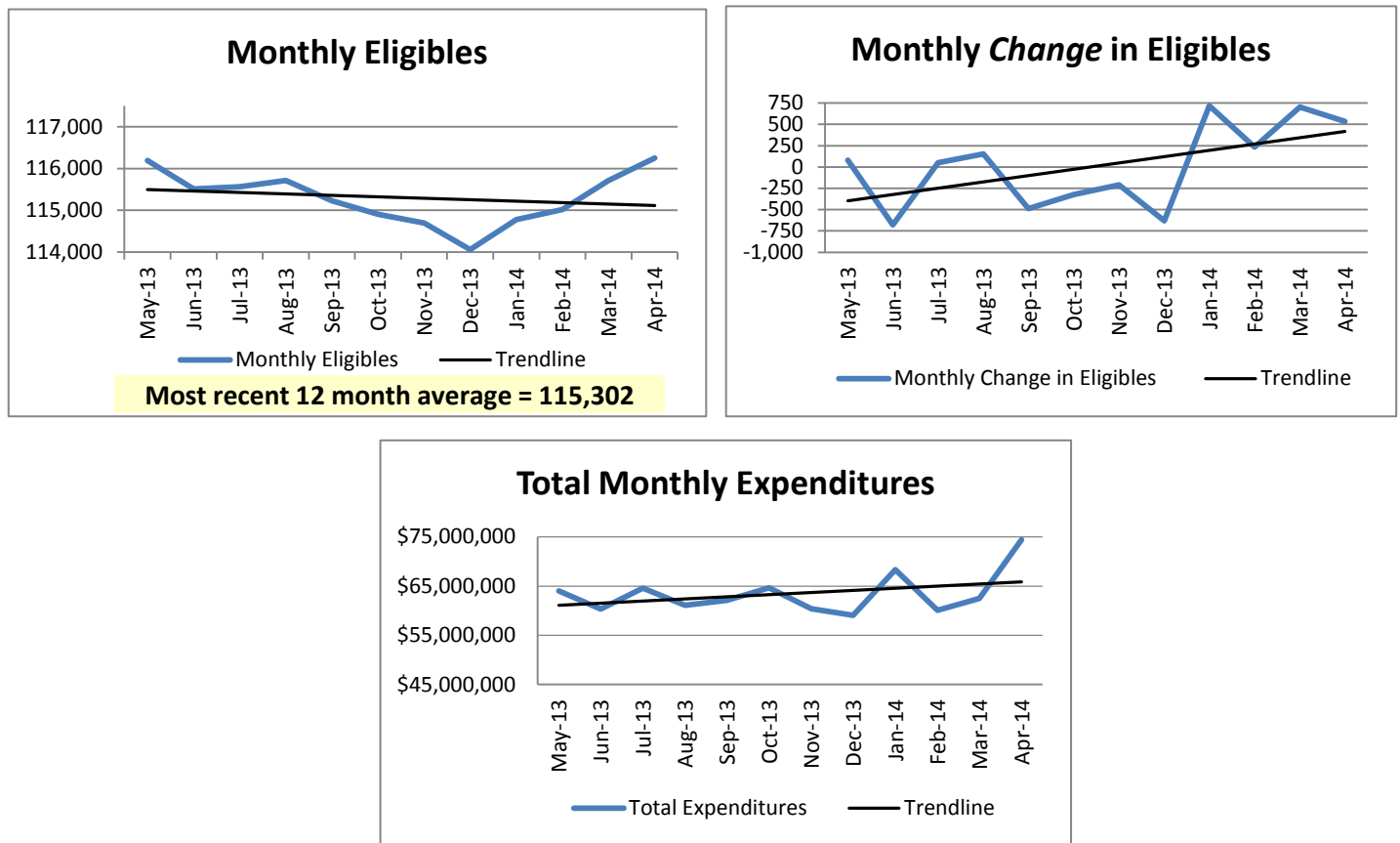
a/ Does not include Premiums for Medicare Part A, Part B and Part D

Payments for Medicare Part A, B and D Premiums

	Part A	Part B	Part D
Payments	\$452,850	\$1,807,007	\$1,461,061

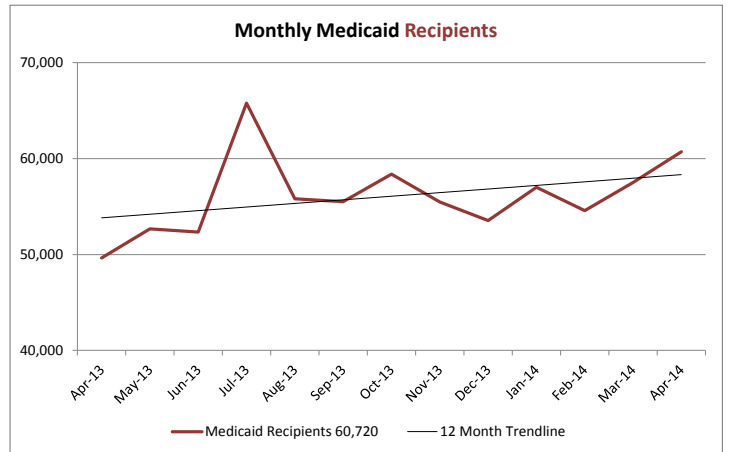
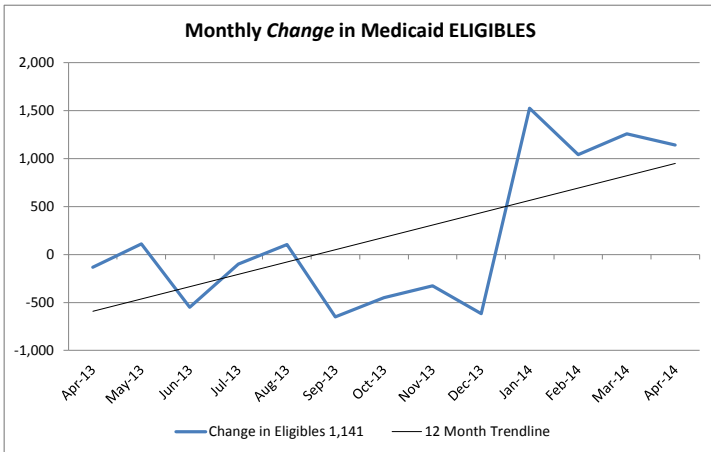
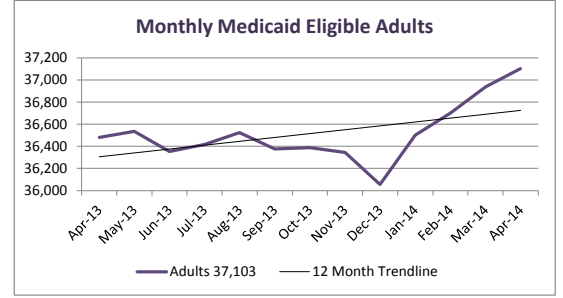
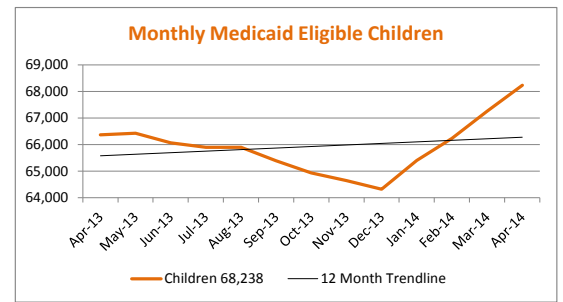
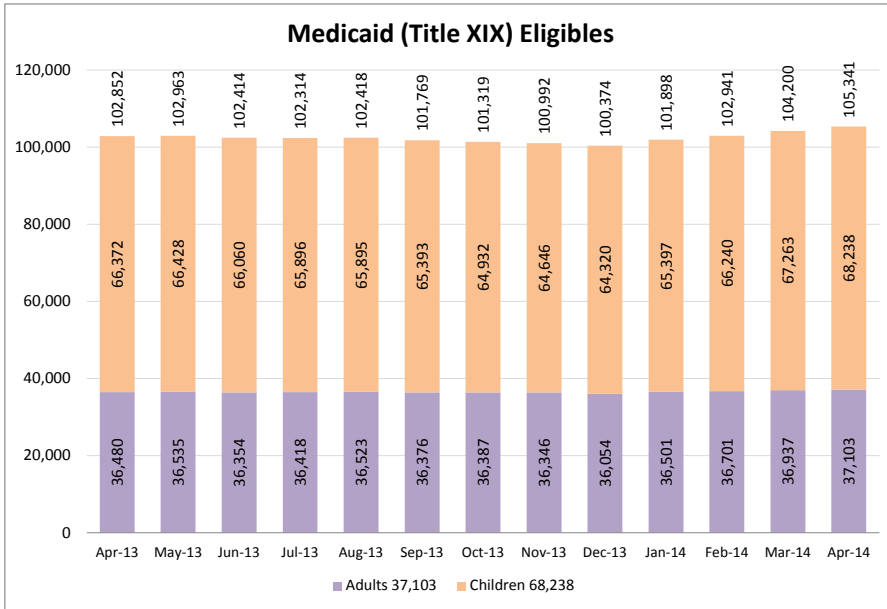
Source: Department of Social Services Monthly Statistical Analysis Report

12 Month Trends



Monthly Medicaid (Title XIX) Data & 12 Month Trends - April 2014

Previous Reports included CHIP (Title XXI)



Recipient Data:

Recipient is an eligible that has had at least one medical service paid during the month.

