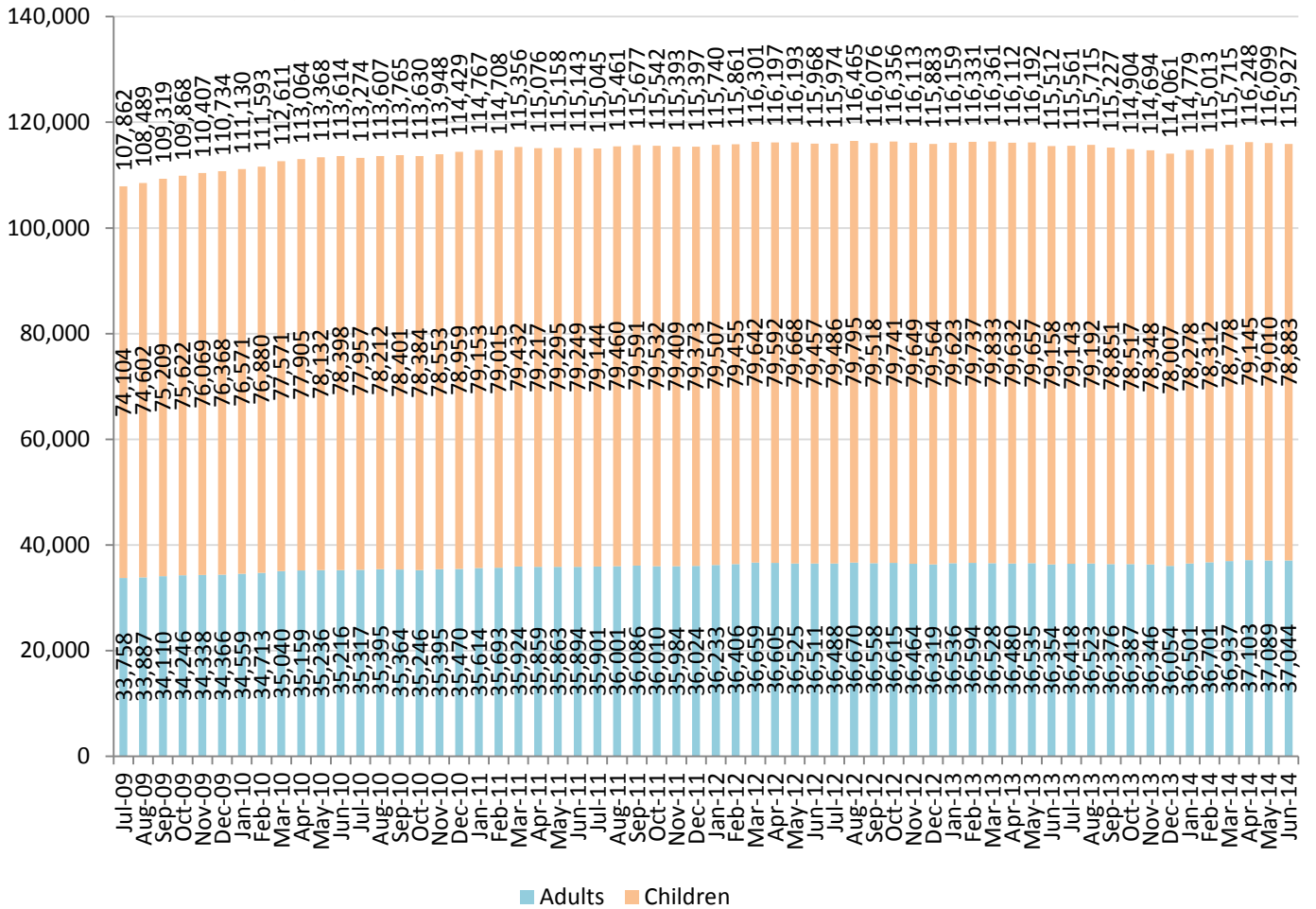
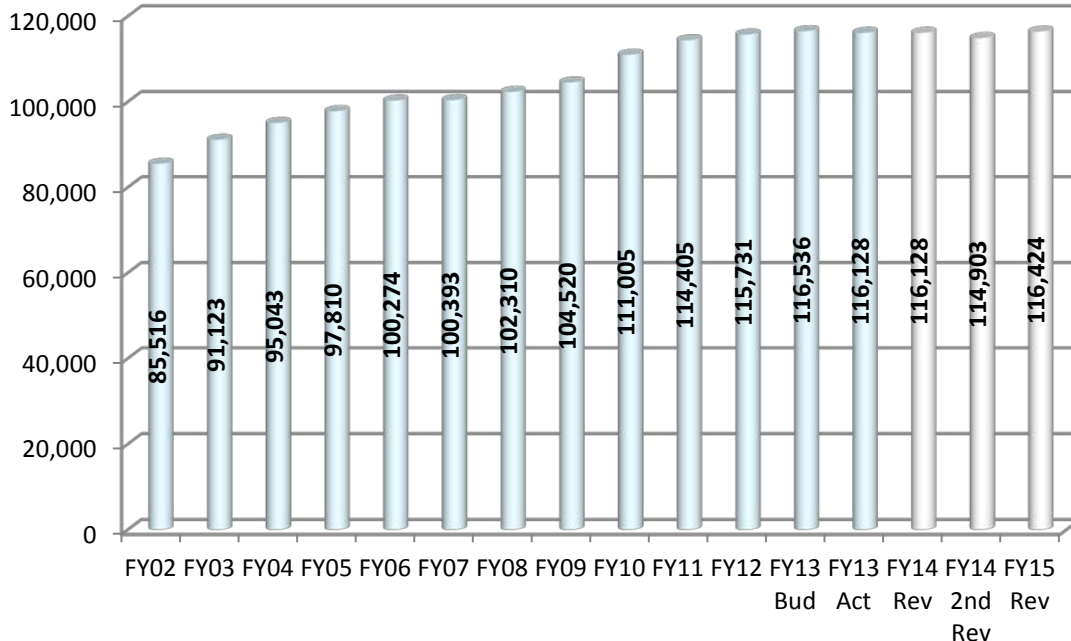


# Medical Services (Title XIX & XXI) Eligible Data - June 2014

## Monthly Individuals Eligible for Title XIX & XXI Medical Services



## Total Annual Average Persons Eligible for Medical Services



# Monthly Expenditure Data

June 2014

## Medical Eligibles and Recipient data:

*Represents all departments that utilize Medicaid and SCHIP funds.*

	Total	Medicaid	SCHIP
Eligibles	115,927	105,085	10,842
Recipients*	59,378	55,121	4,257
Recipients as percent of Eligibles	51%	52%	39%
Expenditures**	\$66,190,063	\$64,608,796	\$1,581,267
Expenditures per Eligible	\$571	\$615	\$146
Expenditures per Recipient	\$1,115	\$1,172	\$371

\*Recipient is an eligible individual that has had at least one medical service paid for during the month.

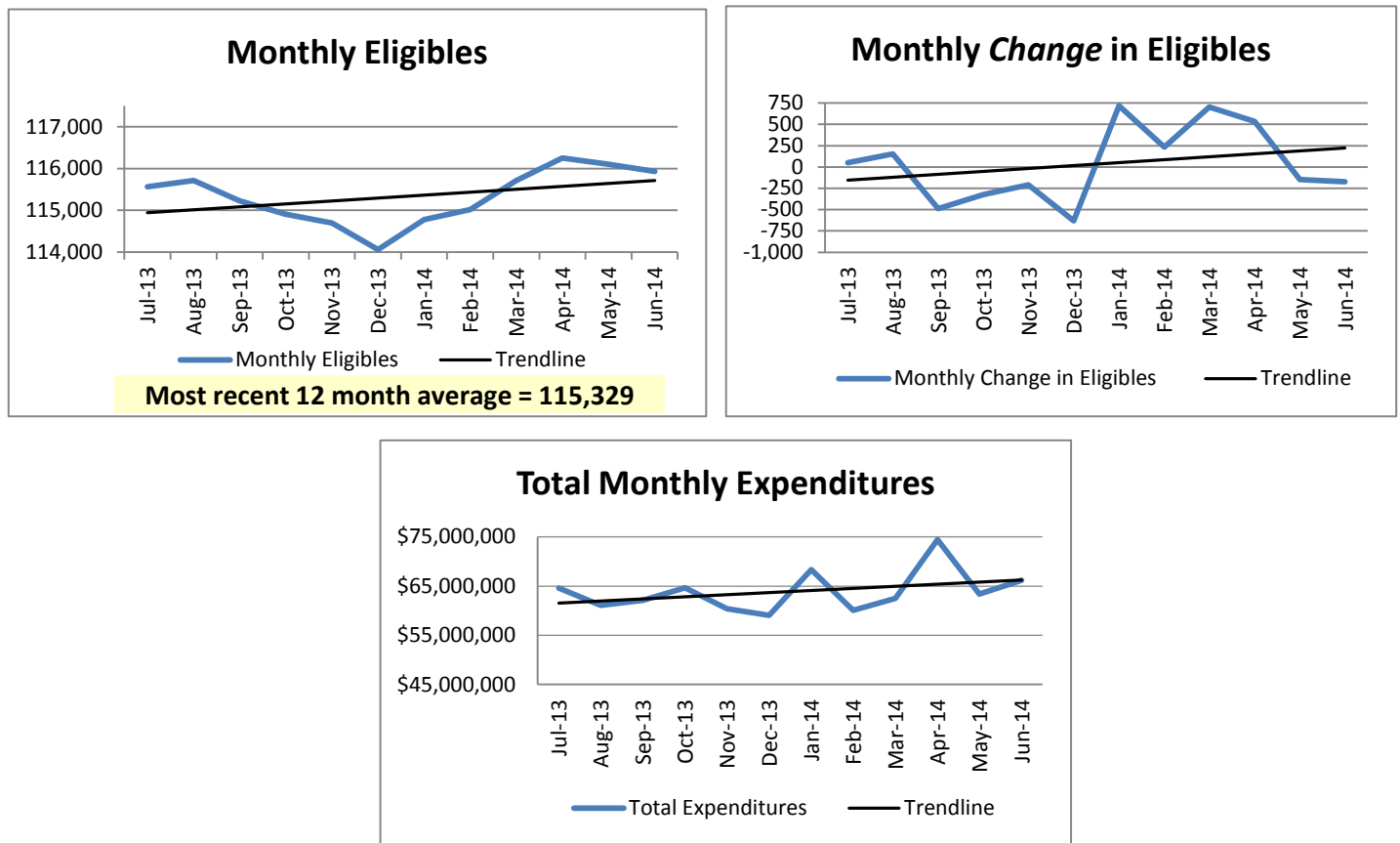
\*\* Does not include Premiums for Medicare Part A, Part B and Part D

## Payments for Medicare Part A, B, and D Premiums

	Part A	Part B	Part D
Payments	\$446,274	\$1,818,227	\$1,436,220

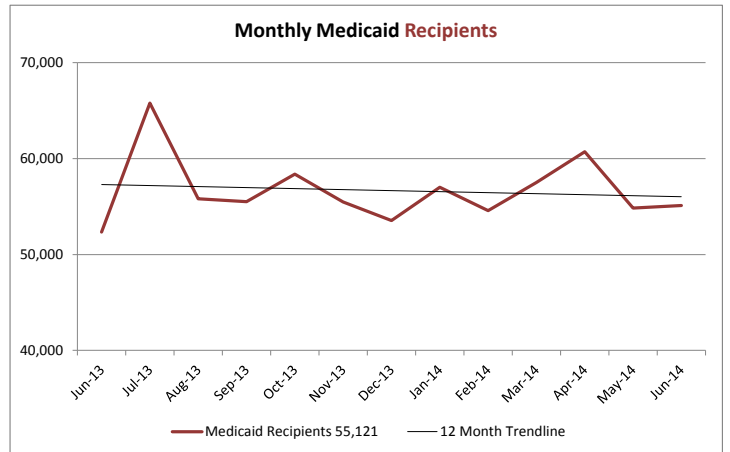
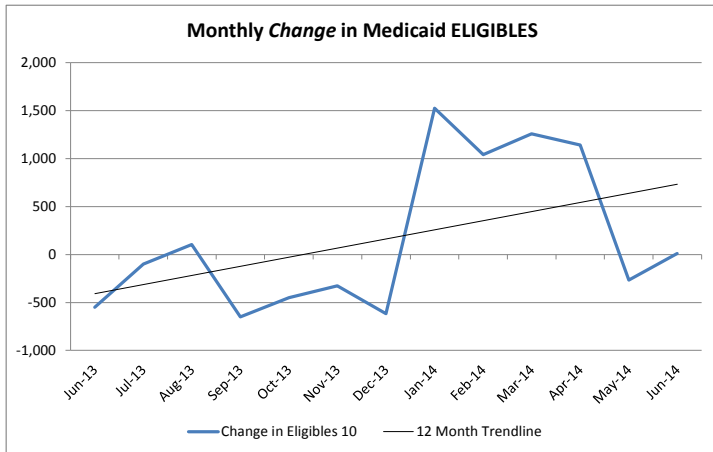
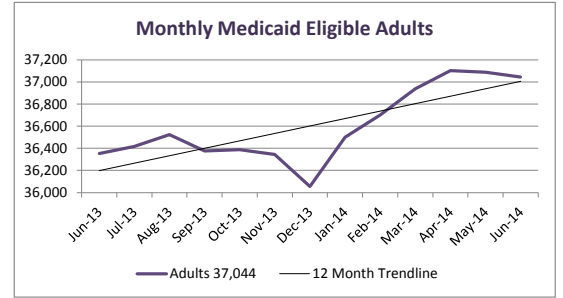
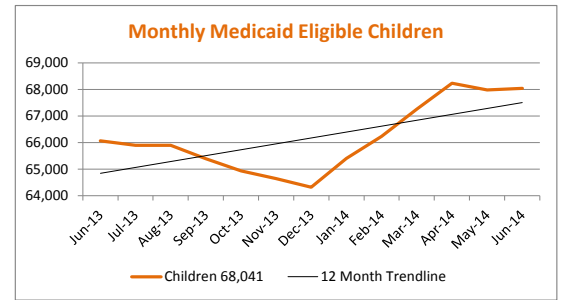
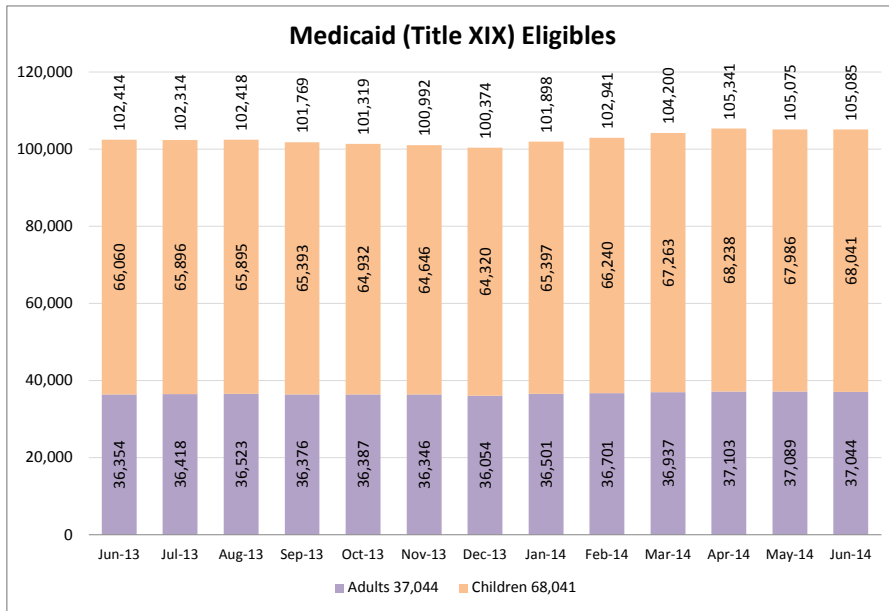
Source: Department of Social Services Monthly Statistical Analysis Report

## 12 Month Trends



# Monthly Medicaid (Title XIX) Data & 12 Month Trends - June 2014

Previous Reports included CHIP (Title XXI)



Recipient Data:

Recipient is an eligible that has had at least one medical service paid during the month.

