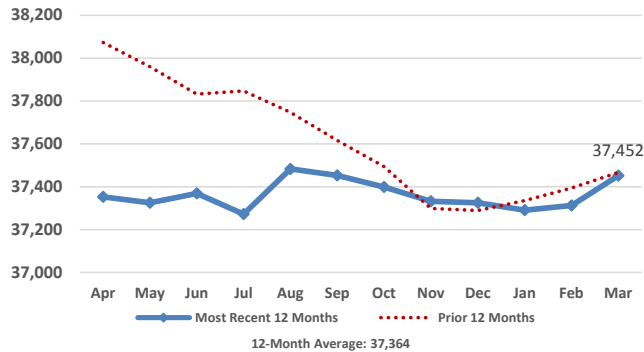


Medical Services Data and Trends

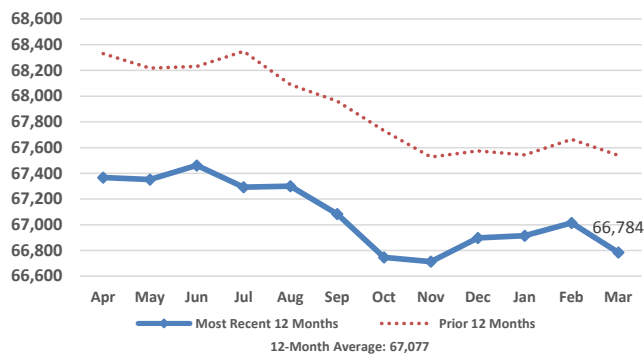
March 2017



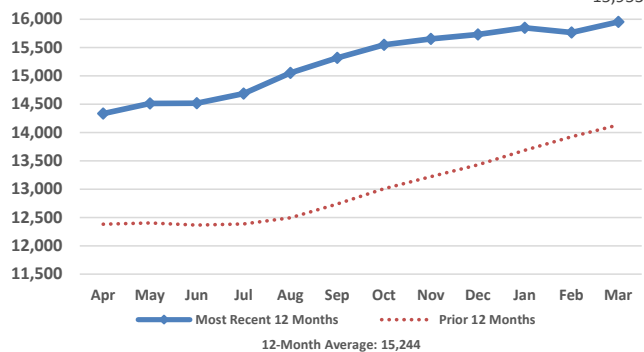
Adult Medicaid Enrollment



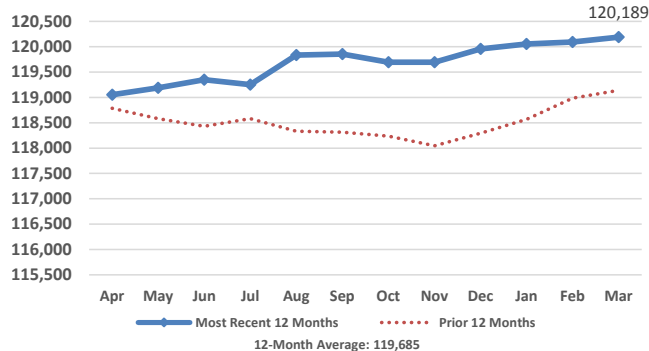
Child Medicaid Enrollment



CHIP Enrollment



Total Medical Services Enrollment



Monthly Enrollment Data

Eligibility Category	Enrollees	Monthly Change	Yearly Change
Aged/Blind Adults	7,078	20	63
Disabled Adults	16,299	(34)	184
Pregnant Women	1,172	(3)	(24)
Parents/Caretaker Relatives	12,903	157	(237)
Medicaid Children	66,784	(230)	(756)
CHIP Children	15,953	186	1,819
Total Enrollees	120,189	96	1,049

Children that moved from Medicaid to CHIP this month: 881
Children that moved from CHIP to Medicaid this month: 687

Monthly Expenditure Data

	Medicaid	CHIP	Total
Enrollees	104,236	15,953	120,189
Recipients*	63,967	7,923	71,890
Recipients as % of Enrollees	61%	50%	60%
Expenditures**	\$84,972,075	\$3,532,550	\$88,504,625
Expenditures per Enrollee	\$815	\$221	\$736
Expenditures per Recipient	\$1,328	\$446	\$1,231

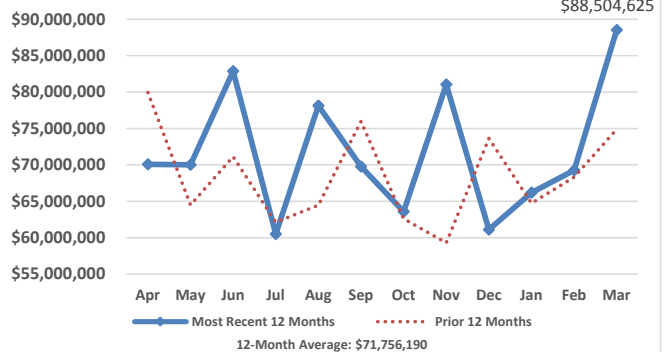
*Recipient is an enrolled individual that had at least one medical service paid for during the month.

** Does not include premiums for Medicare Part A, Part B, and Part D.

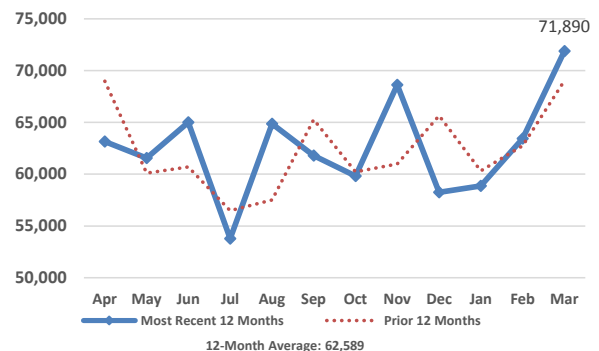
Payments for Medicare Part A, B, & D Premiums

	Part A	Part B	Part D
Persons	1,256	17,535	12,168
Payment	\$498,703	\$2,346,876	\$1,784,457
Average Payment per Person	\$397.06	\$133.84	\$146.65

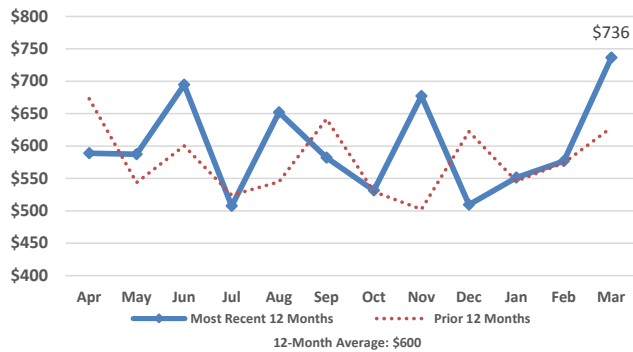
Total Medical Services Expenditures



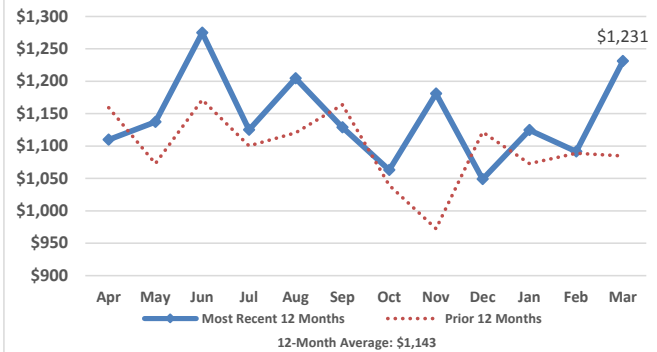
Total Medical Services Recipients



Total Expenditures per Enrollee



Total Expenditures per Recipient



Medicaid Budget

SFY	Enrollment	State	Federal	Total
2016 Actual	105,141	\$381,071,074	\$484,259,479	\$865,330,553
2017 Budget	105,007	\$390,798,052	\$589,074,026	\$979,872,078

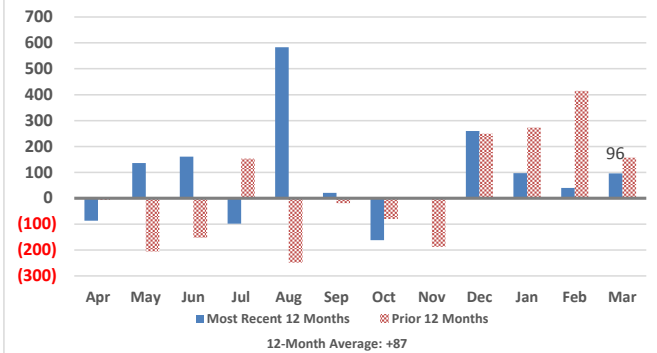
CHIP Budget

SFY	Enrollment	State	Federal	Total
2016 Actual	13,533	\$4,105,971	\$22,800,580	\$26,906,551
2017 Budget	15,340	\$2,581,986	\$25,729,292	\$28,311,278

Total Medical Services Budget

SFY	Enrollment	State	Federal	Total
2016 Actual	118,674	\$385,177,045	\$507,060,059	\$892,237,104
2017 Budget	120,347	\$393,380,038	\$614,803,318	\$1,008,183,356

Change in Medical Services Enrollees



Federal Medical Assistance Percentage

Regular FMAP

SFY	2016	2017	2018
Federal	51.61%	54.11%	55.24%
State	48.39%	45.89%	44.76%

CHIP FMAP

SFY	2016	2017	2018
Federal	83.39%	90.88%	91.67%
State	16.61%	9.12%	8.33%

South Dakota Income Eligibility - Calendar Year 2017

	Parent/ Caretaker	Aged/Blind/ Disabled (Single)	Aged/Blind/ Disabled (Couple)	Pregnant Women	Child Medicaid	CHIP
%FPL:	57%	74%	83%	138%	182%	209%
Family Size	1	\$6,874	\$8,796	X	\$16,643	\$21,949
	2	\$9,257	X	\$13,200	\$22,411	\$29,557
	3	\$11,639	X	X	\$28,180	\$37,164
	4	\$14,022	X	X	\$33,948	\$44,772
	5	\$16,405	X	X	\$39,716	\$52,380
	6	\$18,787	X	X	\$45,485	\$59,987
	7	\$21,170	X	X	\$51,253	\$67,595
	8	\$23,552	X	X	\$57,022	\$75,202

South Dakota Medical Services Expenditures and Enrollees

