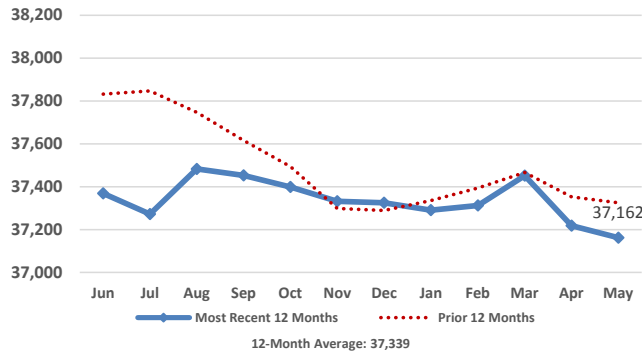


# Medical Services Data and Trends

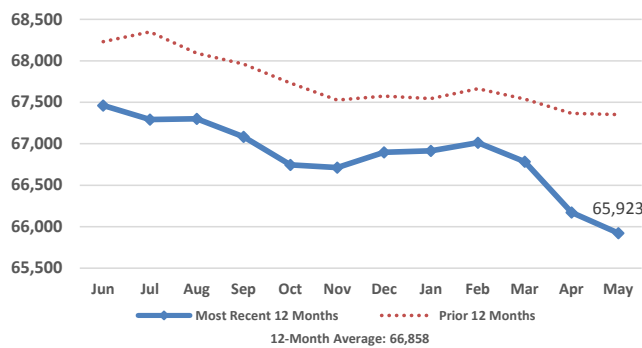
May 2017



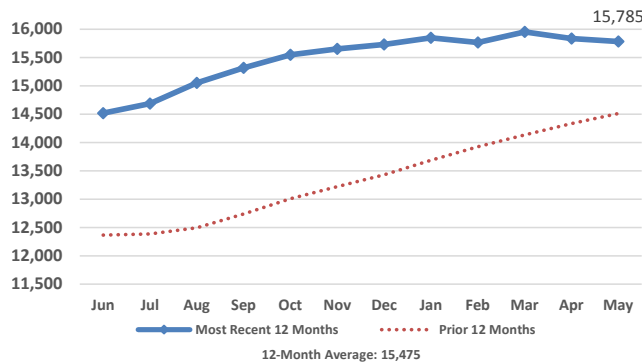
## Adult Medicaid Enrollment



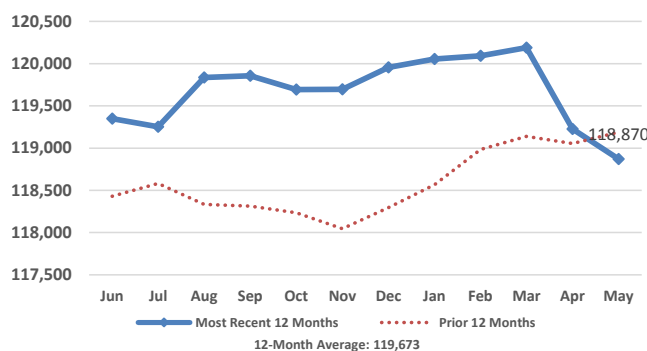
## Child Medicaid Enrollment



## CHIP Enrollment



## Total Medical Services Enrollment



## Monthly Enrollment Data

Eligibility Category	Enrollees	Monthly Change	Yearly Change
Aged/Blind Adults	7,104	10	118
Disabled Adults	16,339	80	190
Pregnant Women	1,145	8	(51)
Parents/Caretaker Relatives	12,574	(154)	(420)
Medicaid Children	65,923	(249)	(1,429)
CHIP Children	15,785	(52)	1,273
<b>Total Enrollees</b>	<b>118,870</b>	<b>(357)</b>	<b>(319)</b>

Children that moved from Medicaid to CHIP this month: 674  
 Children that moved from CHIP to Medicaid this month: 633

## Monthly Expenditure Data

	Medicaid	CHIP	Total
Enrollees	103,085	15,785	118,870
Recipients*	59,883	6,997	66,880
Recipients as % of Enrollees	58%	44%	56%
Expenditures**	\$78,672,086	\$2,908,118	\$81,580,204
Expenditures per Enrollee	\$763	\$184	\$686
Expenditures per Recipient	\$1,314	\$416	\$1,220

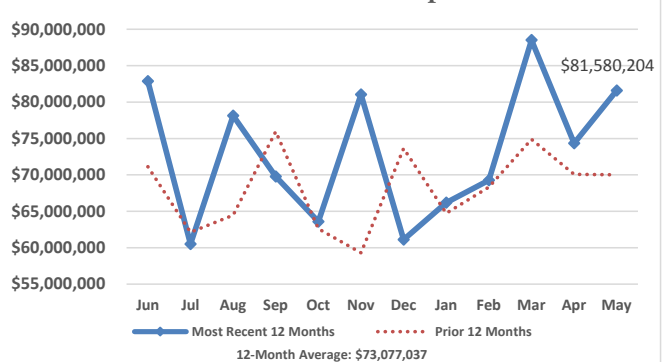
\*Recipient is an enrolled individual that had at least one medical service paid for during the month.

\*\* Does not include premiums for Medicare Part A, Part B, and Part D.

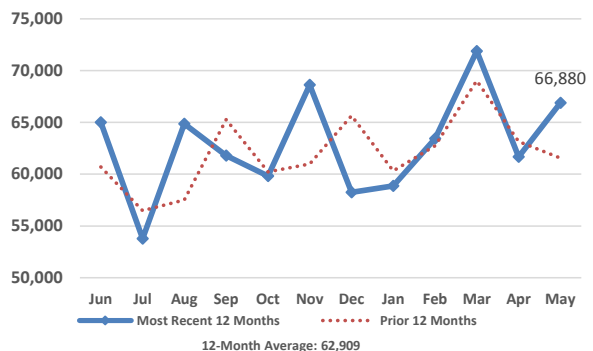
## Payments for Medicare Part A, B, & D Premiums

	Part A	Part B	Part D
Persons	1,270	17,552	12,191
Payment	\$505,724	\$2,350,220	\$1,787,332
Average Payment per Person	\$398	\$134	\$147

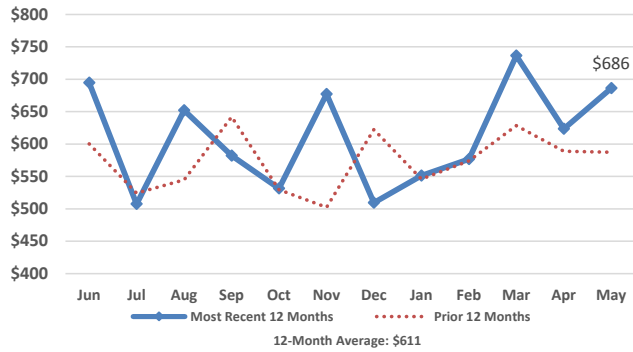
## Total Medical Services Expenditures



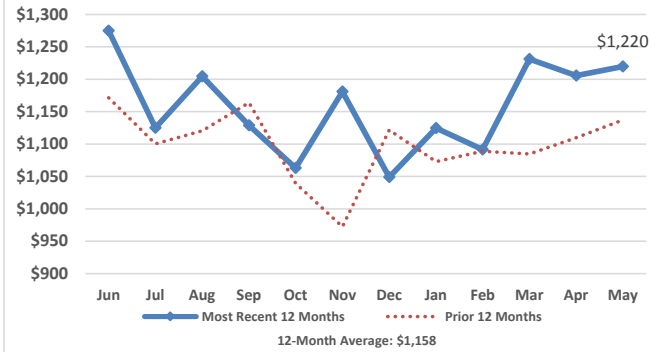
## Total Medical Services Recipients



### Total Expenditures per Enrollee



### Total Expenditures per Recipient



### Medicaid Budget

SFY	Enrollment	State	Federal	Total
2016 Actual	105,141	\$381,071,074	\$484,259,479	\$865,330,553
2017 Budget	105,007	\$390,798,052	\$589,074,026	\$979,872,078

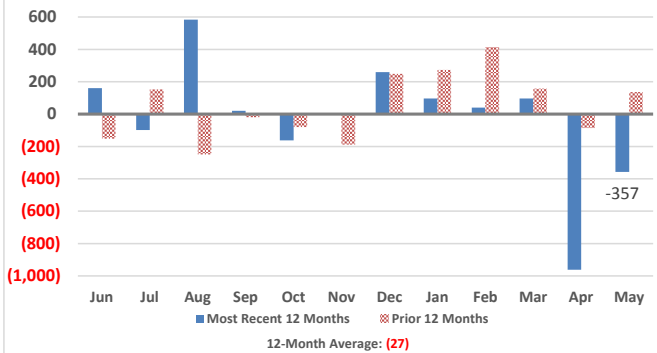
### CHIP Budget

SFY	Enrollment	State	Federal	Total
2016 Actual	13,533	\$4,105,971	\$22,800,580	\$26,906,551
2017 Budget	15,340	\$2,581,986	\$25,729,292	\$28,311,278

### Total Medical Services Budget

SFY	Enrollment	State	Federal	Total
2016 Actual	118,674	\$385,177,045	\$507,060,059	\$892,237,104
2017 Budget	120,347	\$393,380,038	\$614,803,318	\$1,008,183,356

### Change in Medical Services Enrollees



### Federal Medical Assistance Percentage

#### Regular FMAP

SFY	2016	2017	2018
Federal	51.61%	54.11%	55.24%
State	48.39%	45.89%	44.76%

#### CHIP FMAP

SFY	2016	2017	2018
Federal	83.39%	90.88%	91.67%
State	16.61%	9.12%	8.33%

### South Dakota Income Eligibility - Calendar Year 2017

	Parent/ Caretaker	Aged/Blind/ Disabled (Single)	Aged/Blind/ Disabled (Couple)	Pregnant Women	Child Medicaid	CHIP
%FPL:	57%	74%	83%	138%	182%	209%
Family Size	1	\$6,874	\$8,796	X	\$16,643	\$21,949
	2	\$9,257	X	\$13,200	\$22,411	\$29,557
	3	\$11,639	X	X	\$28,180	\$37,164
	4	\$14,022	X	X	\$33,948	\$44,772
	5	\$16,405	X	X	\$39,716	\$52,380
	6	\$18,787	X	X	\$45,485	\$59,987
	7	\$21,170	X	X	\$51,253	\$67,595
	8	\$23,552	X	X	\$57,022	\$75,202

### South Dakota Medical Services Expenditures and Enrollees

