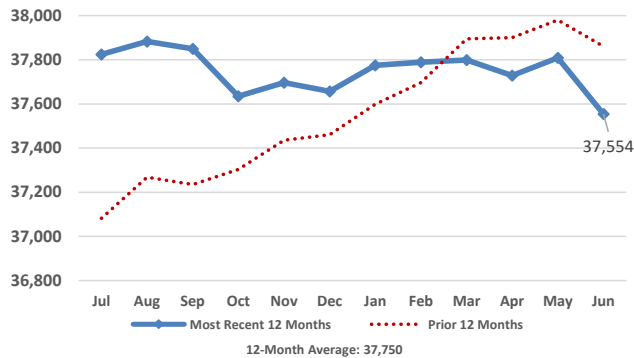


Medical Services Data and Trends

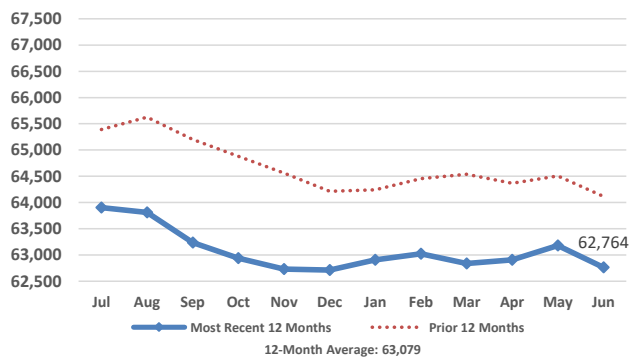
June 2019



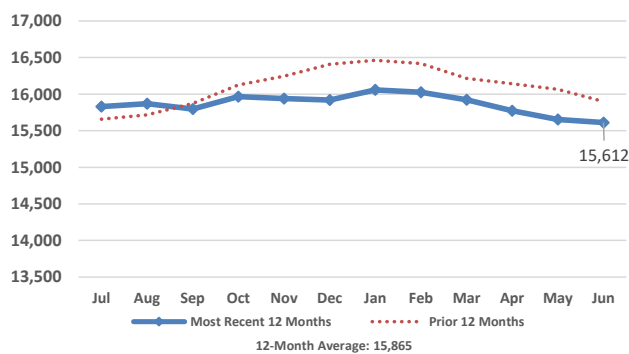
Adult Medicaid Enrollment



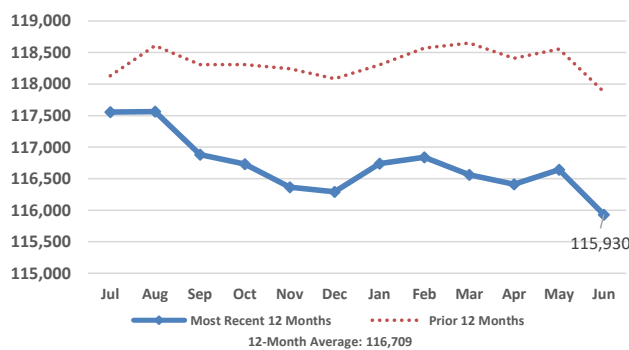
Child Medicaid Enrollment



CHIP Enrollment



Total Medical Services Enrollment



Monthly Enrollment Data

| Eligibility Category | Enrollees | Monthly Change | Yearly Change |
|-----------------------------|----------------|----------------|----------------|
| Aged/Blind Adults | 7,329 | 20 | 81 |
| Disabled Adults | 16,369 | 2 | (125) |
| Pregnant Women | 950 | (53) | (26) |
| Parents/Caretaker Relatives | 12,906 | (224) | (237) |
| Medicaid Children | 62,764 | (417) | (1,352) |
| CHIP Children | 15,612 | (41) | (287) |
| Total Enrollees | 115,930 | (713) | (1,946) |

Children that moved from Medicaid to CHIP this month: 699

Children that moved from CHIP to Medicaid this month: 636

Monthly Expenditure Data

| | Medicaid | CHIP | Total |
|------------------------------|--------------|-------------|--------------|
| Enrollees | 100,318 | 15,612 | 115,930 |
| Recipients* | 52,196 | 5,863 | 58,059 |
| Recipients as % of Enrollees | 52% | 38% | 50% |
| Expenditures** | \$83,381,044 | \$2,674,414 | \$86,055,458 |
| Expenditures per Enrollee | \$831 | \$171 | \$742 |
| Expenditures per Recipient | \$1,597 | \$456 | \$1,482 |

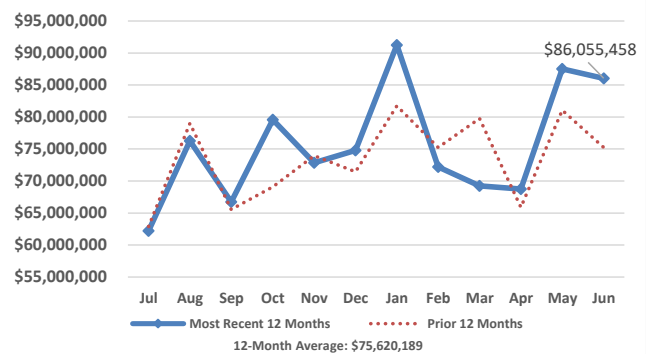
* Recipient is an enrolled individual that had at least one medical service paid for during the month.

** Does not include premiums for Medicare Part A, Part B, and Part D.

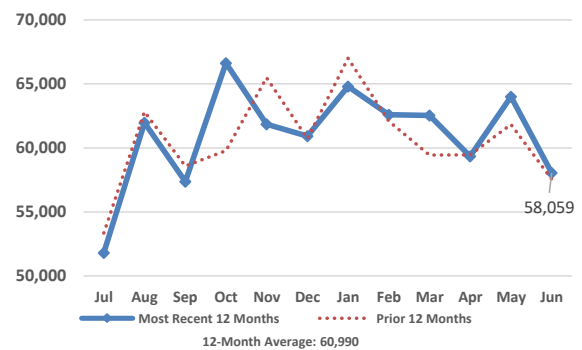
Payments for Medicare Part A, B, & D Premiums

| | Part A | Part B | Part D |
|----------------------------|-----------|-------------|-------------|
| Persons | 1,428 | 18,032 | 12,406 |
| Payment | \$602,828 | \$2,441,340 | \$1,805,554 |
| Average Payment per Person | \$422 | \$135 | \$146 |

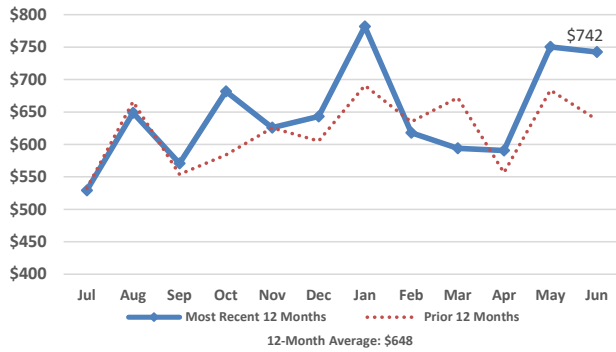
Total Medical Services Expenditures



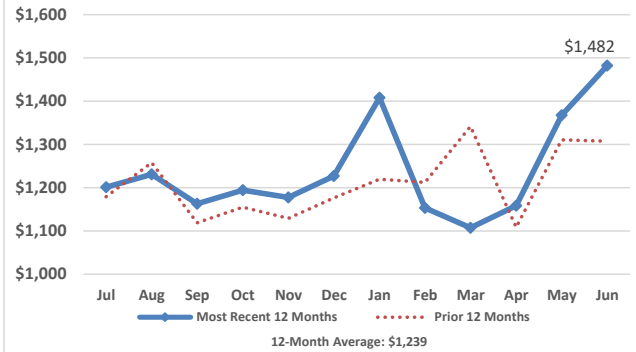
Total Medical Services Recipients



Total Expenditures per Enrollee



Total Expenditures per Recipient



Medicaid Budget

| SFY | Enrollment | State | Federal | Total |
|-------------|------------|---------------|---------------|-----------------|
| 2017 Actual | 104,049 | \$377,530,942 | \$524,267,061 | \$901,798,003 |
| 2018 Actual | 102,235 | \$371,580,450 | \$545,692,260 | \$917,272,710 |
| 2019 Budget | 103,484 | \$392,198,909 | \$656,849,925 | \$1,049,048,834 |

CHIP Budget

| SFY | Enrollment | State | Federal | Total |
|-------------|------------|-------------|--------------|--------------|
| 2017 Actual | 15,570 | \$2,700,989 | \$27,441,048 | \$30,142,037 |
| 2018 Actual | 16,498 | \$2,718,769 | \$29,893,633 | \$32,612,402 |
| 2019 Budget | 15,936 | \$2,494,439 | \$30,588,307 | \$33,082,746 |

Total Medical Services Budget

| SFY | Enrollment | State | Federal | Total |
|-------------|------------|---------------|---------------|-----------------|
| 2017 Actual | 119,619 | \$380,231,931 | \$551,708,109 | \$931,940,040 |
| 2018 Actual | 118,733 | \$374,299,219 | \$575,585,893 | \$949,885,112 |
| 2019 Budget | 119,420 | \$394,693,348 | \$687,438,232 | \$1,082,131,580 |

Federal Medical Assistance Percentage

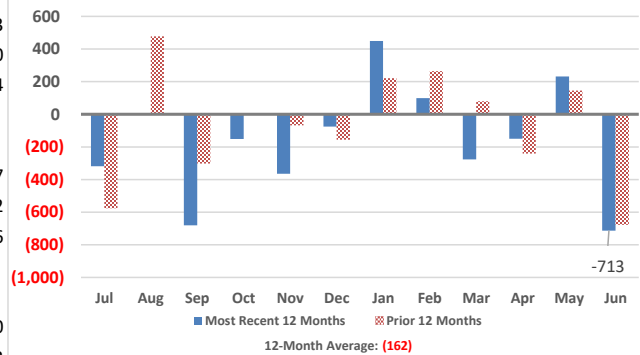
Regular FMAP

| | SFY2017 | SFY2018 | SFY2019 | SFY2020 |
|---------|---------|---------|---------|---------|
| Federal | 54.11% | 55.24% | 56.37% | 57.39% |
| State | 45.89% | 44.76% | 43.63% | 42.61% |

CHIP FMAP

| | SFY2017 | SFY2018 | SFY2019 | SFY2020 |
|---------|---------|---------|---------|---------|
| Federal | 90.88% | 91.67% | 92.46% | 84.55% |
| State | 9.12% | 8.33% | 7.54% | 15.45% |

Change in Medical Services Enrollees



South Dakota Income Eligibility - Calendar Year 2019

| | Parent/ Caretaker | Aged/Blind/ Disabled (Single) | Aged/Blind/ Disabled (Couple) | Pregnant Women | Child Medicaid | CHIP |
|-------|----------------------|-------------------------------------|-------------------------------------|-------------------|-------------------|----------|
| %FPL: | 40% - 59% | 74% | 83% | 138% | 182% | 209% |
| 1 | \$7,380 | \$9,492 | X | \$17,236 | \$22,732 | \$26,104 |
| 2 | \$9,276 | X | \$14,124 | \$23,336 | \$30,776 | \$35,342 |
| 3 | \$10,620 | X | X | \$29,435 | \$38,821 | \$44,580 |
| 4 | \$11,904 | X | X | \$35,535 | \$46,865 | \$53,818 |
| 5 | \$13,236 | X | X | \$41,635 | \$54,909 | \$63,055 |
| 6 | \$14,568 | X | X | \$47,734 | \$62,954 | \$72,293 |
| 7 | \$15,876 | X | X | \$53,834 | \$70,998 | \$81,531 |
| 8 | \$17,160 | X | X | \$59,933 | \$79,043 | \$90,769 |

Medical Services Expenditures and Enrollees

