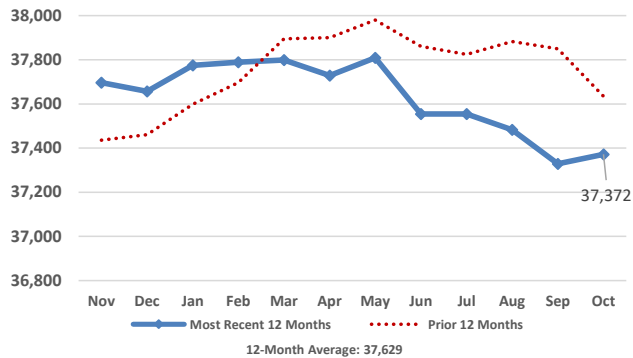


# Medical Services Data and Trends

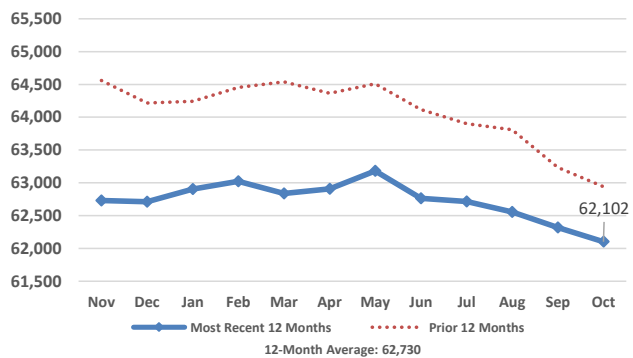
October 2019



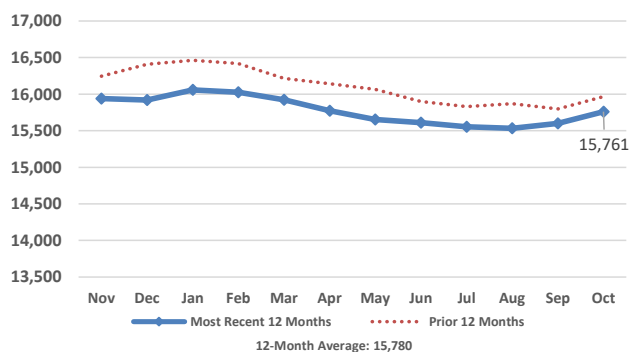
## Adult Medicaid Enrollment



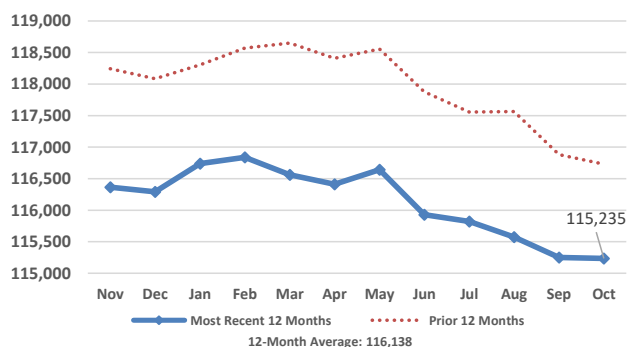
## Child Medicaid Enrollment



## CHIP Enrollment



## Total Medical Services Enrollment



## Monthly Enrollment Data

Eligibility Category	Enrollees	Monthly Change	Yearly Change
Aged/Blind Adults	7,385	10	37
Disabled Adults	16,387	14	60
Pregnant Women	925	11	(63)
Parents/Caretaker Relatives	12,675	8	(297)
Medicaid Children	62,102	(216)	(839)
CHIP Children	15,761	159	(206)
<b>Total Enrollees</b>	<b>115,235</b>	<b>(14)</b>	<b>(1,308)</b>

Children that moved from Medicaid to CHIP this month: 693

Children that moved from CHIP to Medicaid this month: 539

## Monthly Expenditure Data

	Medicaid	CHIP	Total
Enrollees	99,474	15,761	115,235
Recipients*	57,709	7,802	65,511
Recipients as % of Enrollees	58%	50%	57%
Expenditures**	\$78,829,821	\$3,256,097	\$82,085,918
Expenditures per Enrollee	\$792	\$207	\$712
Expenditures per Recipient	\$1,366	\$417	\$1,253

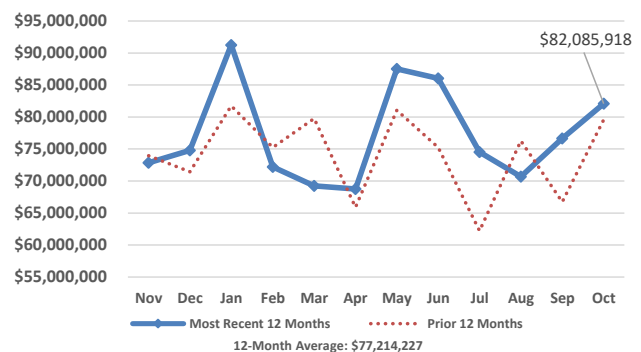
\* Recipient is an enrolled individual that had at least one medical service paid for during the month.

\*\* Does not include premiums for Medicare Part A, Part B, and Part D.

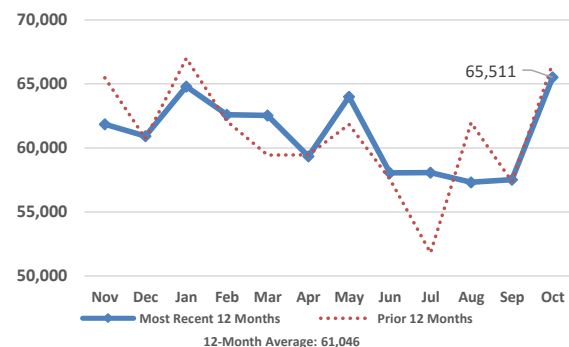
## Payments for Medicare Part A, B, & D Premiums

	Part A	Part B	Part D
Persons	1,442	18,139	12,429
Payment	\$607,610	\$2,455,538	\$1,808,899
Average Payment per Person	\$421	\$135	\$146

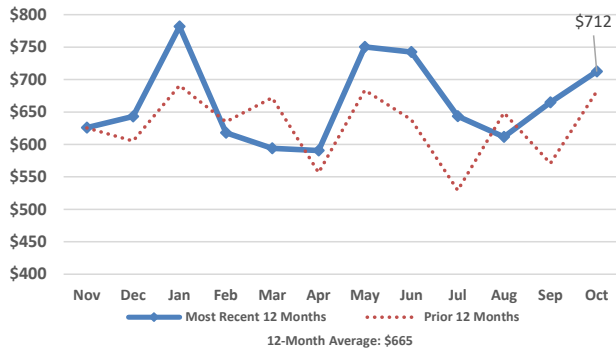
## Total Medical Services Expenditures



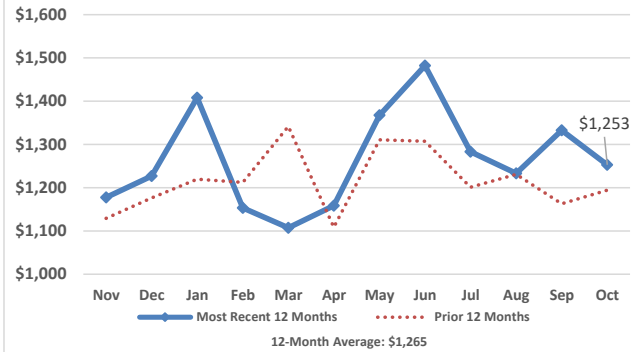
## Total Medical Services Recipients



### Total Expenditures per Enrollee



### Total Expenditures per Recipient



### Medicaid Budget

SFY	Enrollment	State	Federal	Total
2018 Actual	102,235	\$371,580,450	\$545,692,260	\$917,272,710
2019 Actual	100,845	\$369,977,992	\$564,256,326	\$934,234,318
2020 Budget	101,715	\$401,024,091	\$701,029,984	\$1,102,054,075

### CHIP Budget

SFY	Enrollment	State	Federal	Total
2018 Actual	16,498	\$2,718,769	\$29,893,633	\$32,612,402
2019 Actual	15,865	\$2,461,749	\$30,487,236	\$32,948,985
2020 Budget	16,287	\$5,757,973	\$31,510,450	\$37,268,423

### Total Medical Services Budget

SFY	Enrollment	State	Federal	Total
2018 Actual	118,733	\$374,299,219	\$575,585,893	\$949,885,112
2019 Actual	116,710	\$372,439,741	\$594,743,562	\$967,183,303
2020 Budget	118,002	\$406,782,064	\$732,540,434	\$1,139,322,498

### Federal Medical Assistance Percentage

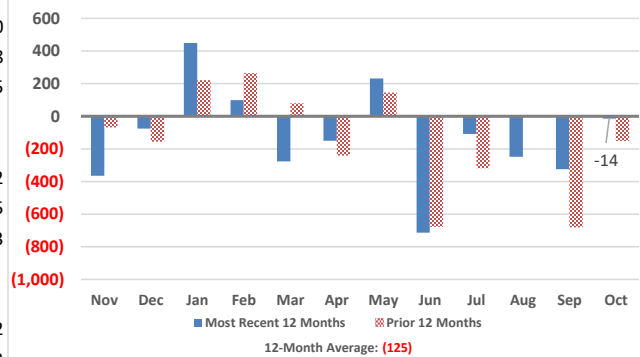
#### Regular FMAP

	SFY2017	SFY2018	SFY2019	SFY2020
Federal	54.11%	55.24%	56.37%	57.39%
State	45.89%	44.76%	43.63%	42.61%

#### CHIP FMAP

	SFY2017	SFY2018	SFY2019	SFY2020
Federal	90.88%	91.67%	92.46%	84.55%
State	9.12%	8.33%	7.54%	15.45%

### Change in Medical Services Enrollees



### South Dakota Income Eligibility - Calendar Year 2019

	Parent/ Caretaker	Aged/Blind/ Disabled (Single)	Aged/Blind/ Disabled (Couple)	Pregnant Women	Child Medicaid	CHIP
%FPL:	40% - 59%	74%	83%	138%	182%	209%
1	\$7,380	\$9,492	X	\$17,236	\$22,732	\$26,104
2	\$9,276	X	\$14,124	\$23,336	\$30,776	\$35,342
3	\$10,620	X	X	\$29,435	\$38,821	\$44,580
4	\$11,904	X	X	\$35,535	\$46,865	\$53,818
5	\$13,236	X	X	\$41,635	\$54,909	\$63,055
6	\$14,568	X	X	\$47,734	\$62,954	\$72,293
7	\$15,876	X	X	\$53,834	\$70,998	\$81,531
8	\$17,160	X	X	\$59,933	\$79,043	\$90,769

### Medical Services Expenditures and Enrollees

