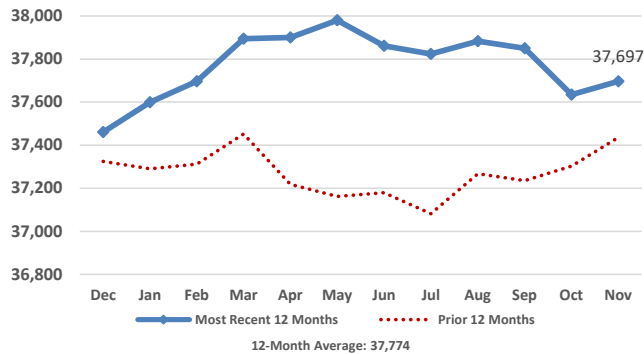


Medical Services Data and Trends

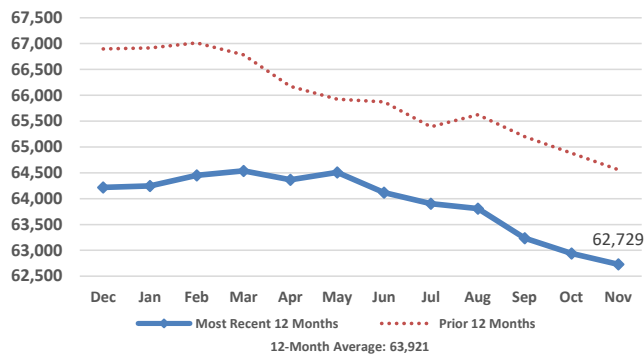
November 2018



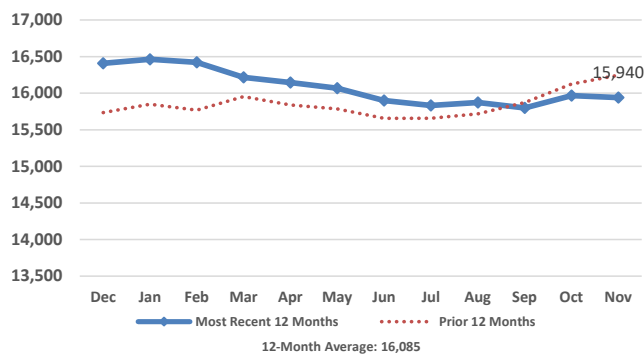
Adult Medicaid Enrollment



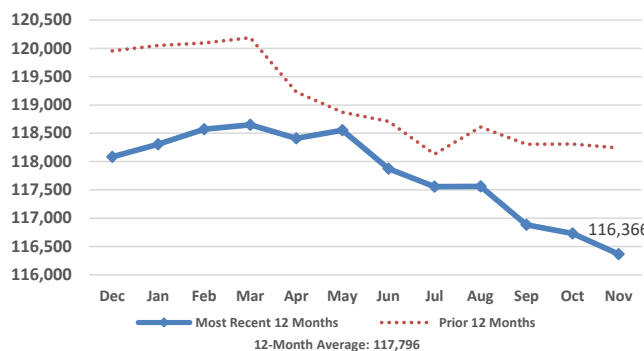
Child Medicaid Enrollment



CHIP Enrollment



Total Medical Services Enrollment



Monthly Enrollment Data

Eligibility Category	Enrollees	Monthly Change	Yearly Change
Aged/Blind Adults	7,315	(33)	51
Disabled Adults	16,526	199	(69)
Pregnant Women	993	5	(92)
Parents/Caretaker Relatives	12,863	(109)	371
Medicaid Children	62,729	(212)	(1,831)
CHIP Children	15,940	(27)	(305)
Total Enrollees	116,366	(177)	(1,875)

Children that moved from Medicaid to CHIP this month: 758
Children that moved from CHIP to Medicaid this month: 714

Monthly Expenditure Data

	Medicaid	CHIP	Total
Enrollees	100,426	15,940	116,366
Recipients*	54,931	6,917	61,848
Recipients as % of Enrollees	55%	43%	53%
Expenditures**	\$70,079,968	\$2,761,141	\$72,841,109
Expenditures per Enrollee	\$698	\$173	\$626
Expenditures per Recipient	\$1,276	\$399	\$1,178

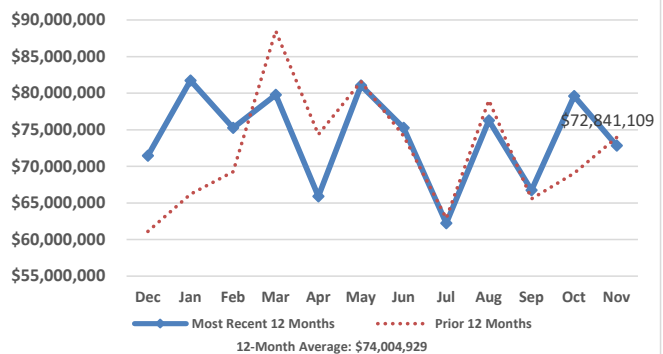
*Recipient is an enrolled individual that had at least one medical service paid for during the month.

** Does not include premiums for Medicare Part A, Part B, and Part D.

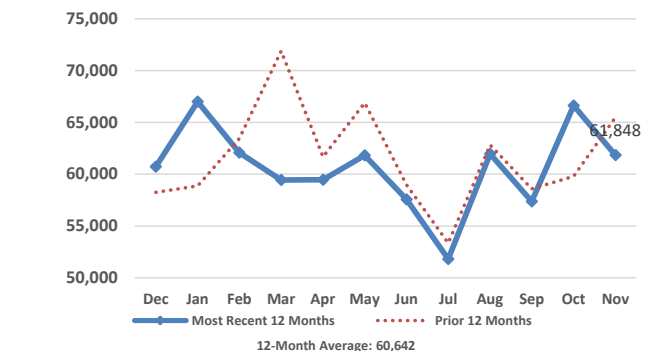
Payments for Medicare Part A, B, & D Premiums

	Part A	Part B	Part D
Persons	1,381	18,000	12,566
Payment	\$562,706	\$2,409,552	\$1,794,899
Average Payment per Person	\$407	\$134	\$143

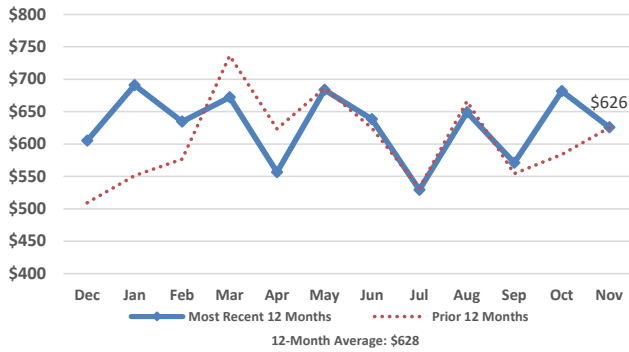
Total Medical Services Expenditures



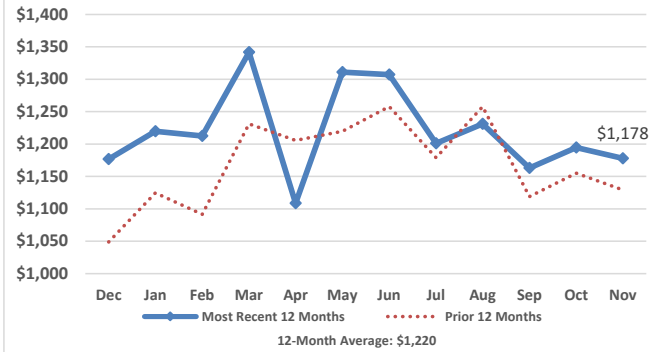
Total Medical Services Recipients



Total Expenditures per Enrollee



Total Expenditures per Recipient



Medicaid Budget

SFY	Enrollment	State	Federal	Total
2017 Actual	104,049	\$377,530,942	\$524,267,061	\$901,798,003
2018 Actual	102,235	\$371,580,450	\$545,692,260	\$917,272,710
2019 Budget	103,484	\$392,198,909	\$656,849,925	\$1,049,048,834

CHIP Budget

SFY	Enrollment	State	Federal	Total
2017 Actual	15,570	\$2,700,989	\$27,441,048	\$30,142,037
2018 Actual	16,498	\$2,718,769	\$29,893,633	\$32,612,402
2019 Budget	15,936	\$2,494,439	\$30,588,307	\$33,082,746

Total Medical Services Budget

SFY	Enrollment	State	Federal	Total
2017 Actual	119,619	\$380,231,931	\$551,708,109	\$931,940,040
2018 Actual	118,733	\$374,299,219	\$575,585,893	\$949,885,112
2019 Budget	119,420	\$394,693,348	\$687,438,232	\$1,082,131,580

Federal Medical Assistance Percentage

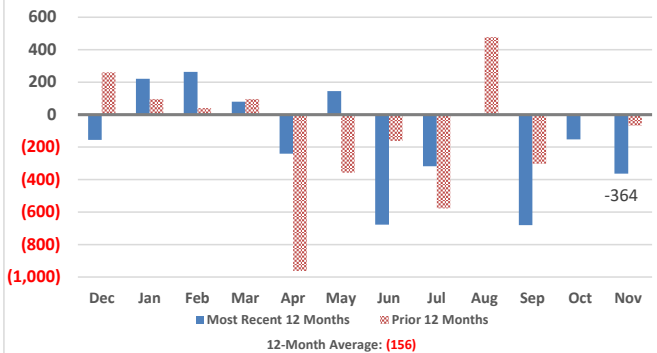
Regular FMAP

	SFY2016	SFY2017	SFY2018	SFY2019
Federal	51.61%	54.11%	55.24%	56.37%
State	48.39%	45.89%	44.76%	43.63%

CHIP FMAP

	SFY2016	SFY2017	SFY2018	SFY2019
Federal	83.39%	90.88%	91.67%	92.46%
State	16.61%	9.12%	8.33%	7.54%

Change in Medical Services Enrollees



South Dakota Income Eligibility - Calendar Year 2018

	Parent/ Caretaker	Aged/Blind/ Disabled (Single)	Aged/Blind/ Disabled (Couple)	Pregnant Women	Child Medicaid	CHIP
%FPL:	57%	74%	83%	138%	182%	209%
1	\$6,920	\$9,000	X	\$16,753	\$22,095	\$25,373
2	\$9,382	X	\$13,500	\$22,715	\$29,957	\$34,401
3	\$11,845	X	X	\$28,676	\$37,820	\$43,430
4	\$14,307	X	X	\$34,638	\$45,682	\$52,459
5	\$16,769	X	X	\$40,600	\$53,544	\$61,488
6	\$19,232	X	X	\$46,561	\$61,407	\$70,517
7	\$21,694	X	X	\$52,523	\$69,269	\$79,545
8	\$24,157	X	X	\$58,484	\$77,132	\$88,574

Medical Services Expenditures and Enrollees

