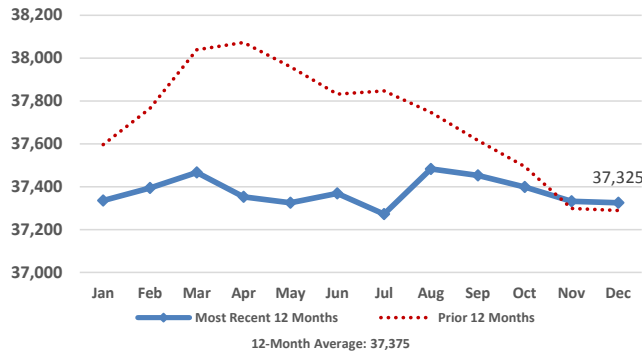


# Medical Services Data and Trends

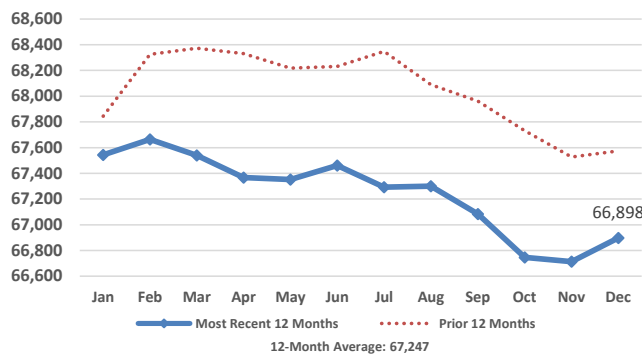
December 2016



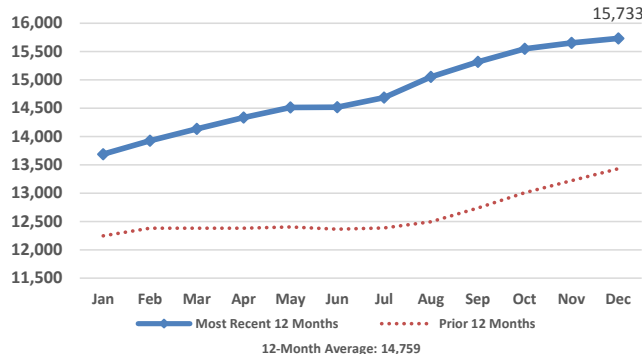
## Adult Medicaid Enrollment



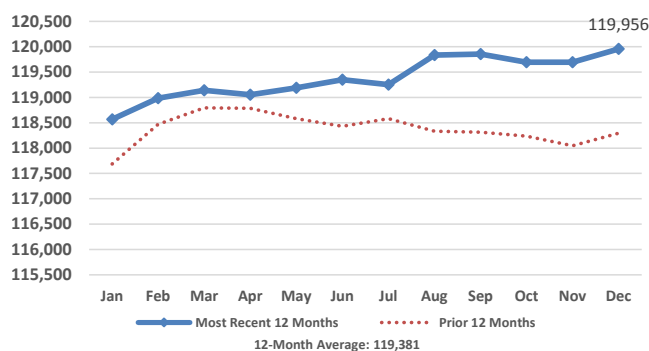
## Child Medicaid Enrollment



## CHIP Enrollment



## Total Medical Services Enrollment



## Monthly Enrollment Data

Eligibility Category	Enrollees	Monthly Change	Yearly Change
Aged/Blind Adults	7,095	19	63
Disabled Adults	16,342	(16)	298
Pregnant Women	1,216	(9)	(32)
Parents/Caretaker Relatives	12,672	(1)	(293)
Medicaid Children	66,898	185	(676)
CHIP Children	15,733	82	2,301
<b>Total Enrollees</b>	<b>119,956</b>	<b>260</b>	<b>1,661</b>

Children that moved from Medicaid to CHIP this month: 753  
Children that moved from CHIP to Medicaid this month: 677

## Monthly Expenditure Data

	Medicaid	CHIP	Total
Enrollees	104,223	15,733	119,956
Recipients*	52,143	6,115	58,258
Recipients as % of Enrollees	50%	39%	49%
Expenditures**	\$58,805,482	\$2,300,262	\$61,105,744
Expenditures per Enrollee	\$564	\$146	\$509
Expenditures per Recipient	\$1,128	\$376	\$1,049

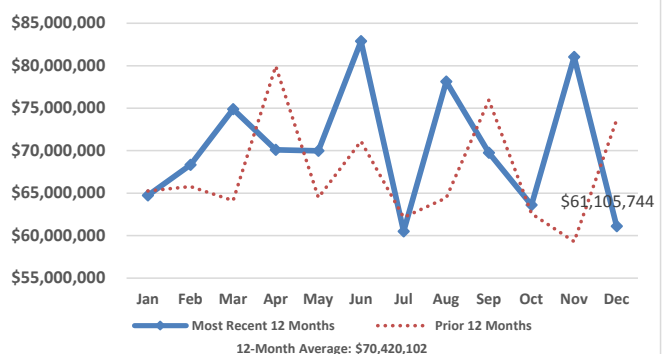
\*Recipient is an enrolled individual that had at least one medical service paid for during the month.

\*\* Does not include premiums for Medicare Part A, Part B, and Part D.

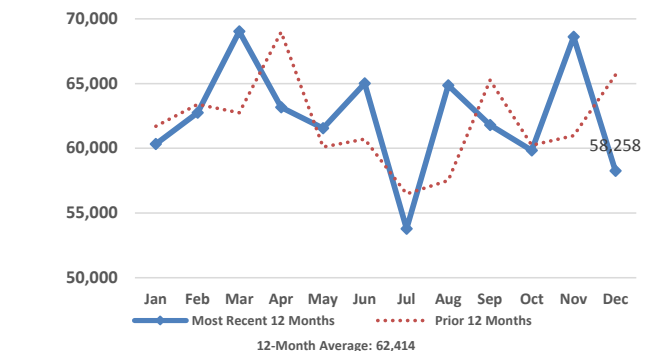
## Payments for Medicare Part A, B, & D Premiums

	Part A	Part B	Part D
Persons	1,237	17,477	12,186
Payment	\$488,571	\$2,127,035	\$1,597,644
Average Payment per Person	\$394.96	\$121.70	\$131.10

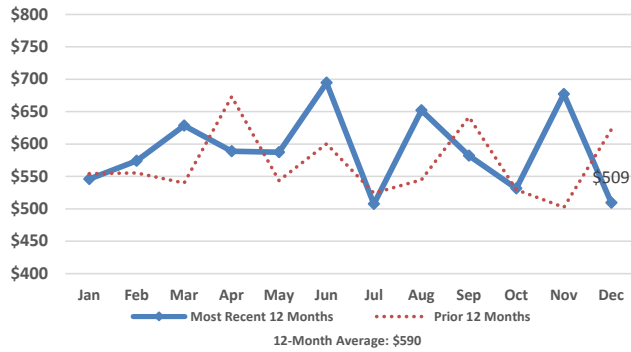
## Total Medical Services Expenditures



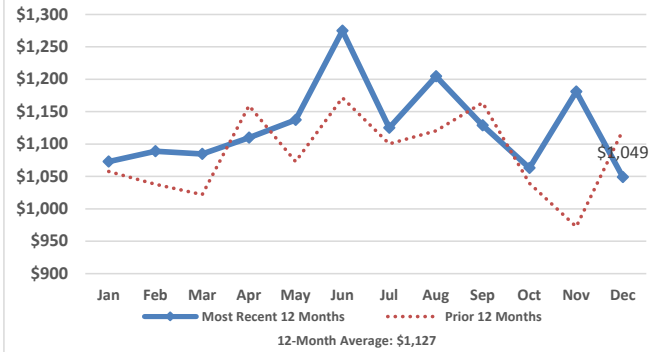
## Total Medical Services Recipients



### Total Expenditures per Enrollee



### Total Expenditures per Recipient



### Medicaid Budget

SFY	Enrollment	State	Federal	Total
2016 Actual	105,141	\$381,071,074	\$484,259,479	\$865,330,553
2017 Budget	107,001	\$390,798,052	\$589,074,026	\$979,872,078

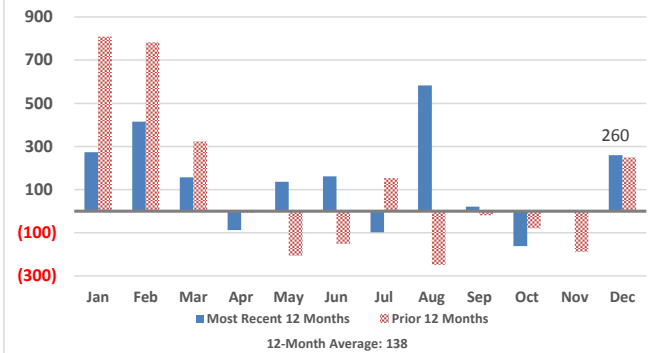
### CHIP Budget

SFY	Enrollment	State	Federal	Total
2016 Actual	13,533	\$4,105,971	\$22,800,580	\$26,906,551
2017 Budget	12,881	\$2,581,986	\$25,729,292	\$28,311,278

### Total Medical Services Budget

SFY	Enrollment	State	Federal	Total
2016 Actual	118,674	\$385,177,045	\$507,060,059	\$892,237,104
2017 Budget	119,882	\$393,380,038	\$614,803,318	\$1,008,183,356

### Change in Medical Services Enrollees



### Federal Medical Assistance Percentage

#### Regular FMAP

SFY	2016	2017	2018
Federal	51.61%	54.11%	55.24%
State	48.39%	45.89%	44.76%

#### CHIP FMAP

SFY	2016	2017	2018
Federal	83.39%	90.88%	91.67%
State	16.61%	9.12%	8.33%

### South Dakota Income Eligibility - Calendar Year 2016

	Parent/ Caretaker	Aged/Blind/ Disabled (Single)	Aged/Blind/ Disabled (Couple)	Pregnant Women	Child Medicaid	CHIP
%FPL:	57%	74%	83%	138%	182%	209%
1	\$6,772	\$8,796	X	\$16,394	\$21,622	\$24,829
2	\$9,131	X	\$13,200	\$22,108	\$29,156	\$33,482
3	\$11,491	X	X	\$27,821	\$36,691	\$42,134
4	\$13,851	X	X	\$33,534	\$44,226	\$50,787
5	\$16,211	X	X	\$39,247	\$51,761	\$59,440
6	\$18,571	X	X	\$44,960	\$59,296	\$68,092
7	\$20,936	X	X	\$50,687	\$66,849	\$76,766
8	\$23,307	X	X	\$56,428	\$74,420	\$85,460

### South Dakota Medical Services Expenditures and Enrollees

