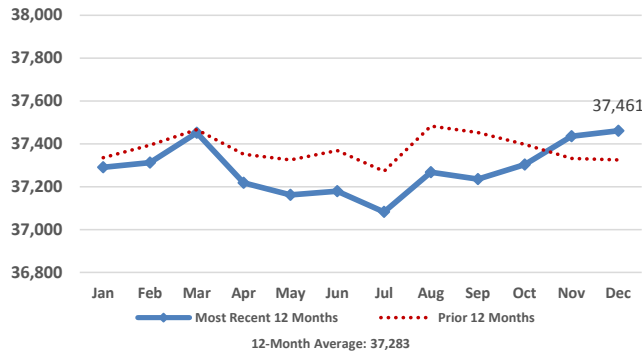


Medical Services Data and Trends

December 2017



Adult Medicaid Enrollment



Monthly Enrollment Data

Eligibility Category	Enrollees	Monthly Change	Yearly Change
Aged/Blind Adults	7,284	20	189
Disabled Adults	16,548	(47)	206
Pregnant Women	1,088	3	(128)
Parents/Caretaker Relatives	12,541	49	(131)
Medicaid Children	64,216	(344)	(2,682)
CHIP Children	16,408	163	675
Total Enrollees	118,085	(156)	(1,871)

Children that moved from Medicaid to CHIP this month: 778
 Children that moved from CHIP to Medicaid this month: 577

Monthly Expenditure Data

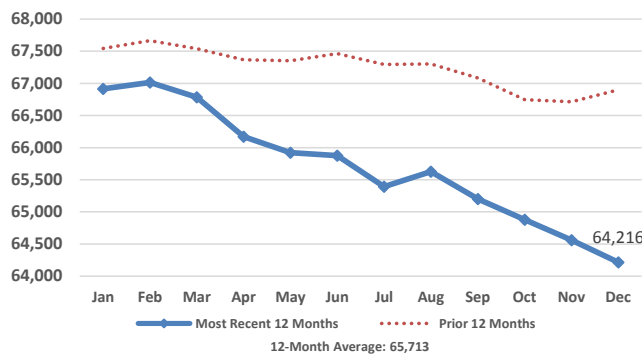
	Medicaid	CHIP	Total
Enrollees	101,677	16,408	118,085
Recipients*	53,875	6,854	60,729
Recipients as % of Enrollees	53%	42%	51%
Expenditures**	\$68,792,332	\$2,662,343	\$71,454,675
Expenditures per Enrollee	\$677	\$162	\$605
Expenditures per Recipient	\$1,277	\$388	\$1,177

*Recipient is an enrolled individual that had at least one medical service paid for during the month.
 ** Does not include premiums for Medicare Part A, Part B, and Part D.

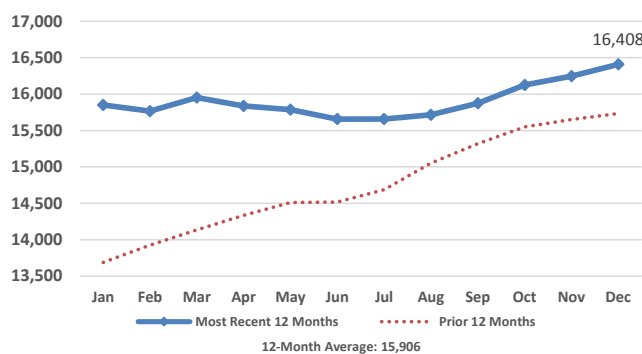
Payments for Medicare Part A, B, & D Premiums

	Part A	Part B	Part D
Persons	1,319	17,800	12,468
Payment	\$525,507	\$2,383,422	\$1,814,426
Average Payment per Person	\$398	\$134	\$146

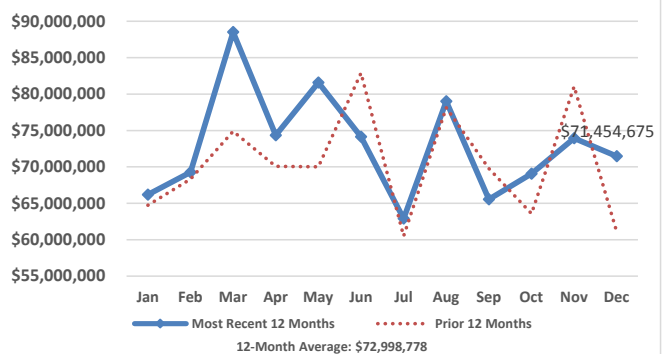
Child Medicaid Enrollment



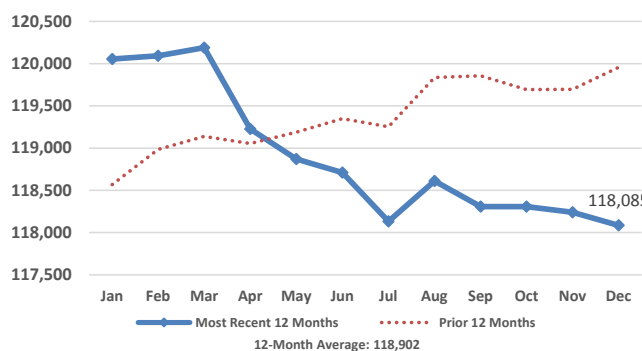
CHIP Enrollment



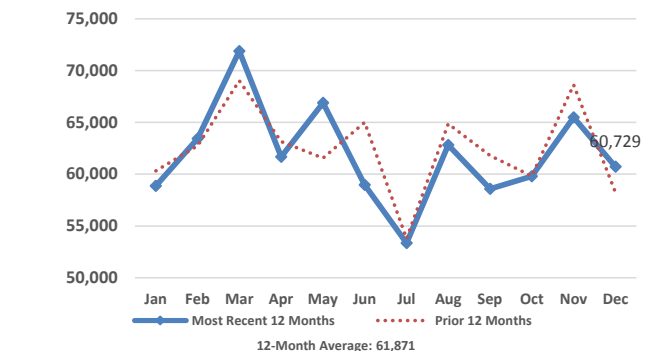
Total Medical Services Expenditures



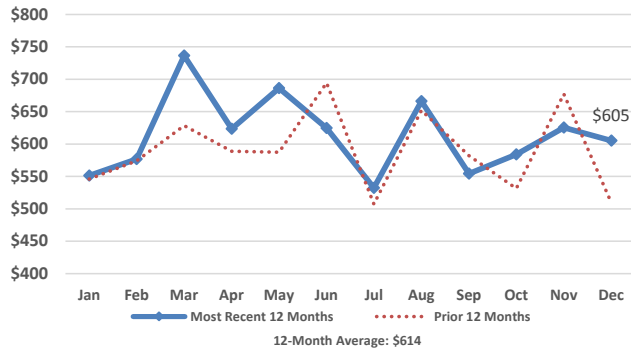
Total Medical Services Enrollment



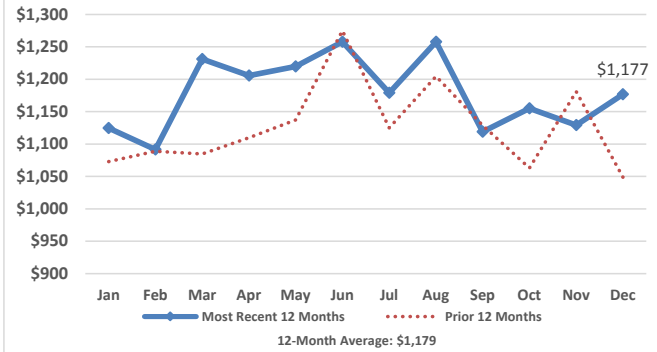
Total Medical Services Recipients



Total Expenditures per Enrollee



Total Expenditures per Recipient



Medicaid Budget

SFY	Enrollment	State	Federal	Total
2017 Actual	104,049	\$377,530,942	\$524,267,061	\$901,798,003
2018 Budget	106,173	\$391,069,891	\$609,462,158	\$1,000,532,049

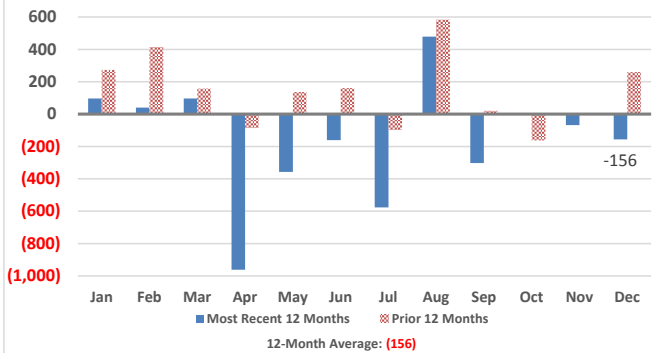
CHIP Budget

SFY	Enrollment	State	Federal	Total
2017 Actual	15,570	\$2,700,989	\$27,441,048	\$30,142,037
2018 Budget	15,847	\$2,623,873	\$28,875,245	\$31,499,118

Total Medical Services Budget

SFY	Enrollment	State	Federal	Total
2017 Actual	119,619	\$380,231,931	\$551,708,109	\$931,940,040
2018 Budget	122,020	\$393,693,764	\$638,337,403	\$1,032,031,167

Change in Medical Services Enrollees



Federal Medical Assistance Percentage

Regular FMAP

	SFY2016	SFY2017	SFY2018	SFY2019
Federal	51.61%	54.11%	55.24%	56.37%
State	48.39%	45.89%	44.76%	43.63%

CHIP FMAP

	SFY2016	SFY2017	SFY2018	SFY2019
Federal	83.39%	90.88%	91.67%	92.46%
State	16.61%	9.12%	8.33%	7.54%

South Dakota Income Eligibility - Calendar Year 2017

	Parent/ Caretaker	Aged/Blind/ Disabled (Single)	Aged/Blind/ Disabled (Couple)	Pregnant Women	Child Medicaid	CHIP
%FPL:	57%	74%	83%	138%	182%	209%
1	\$6,874	\$8,796	X	\$16,643	\$21,949	\$25,205
2	\$9,257	X	\$13,200	\$22,411	\$29,557	\$33,942
3	\$11,639	X	X	\$28,180	\$37,164	\$42,678
4	\$14,022	X	X	\$33,948	\$44,772	\$51,414
5	\$16,405	X	X	\$39,716	\$52,380	\$60,150
6	\$18,787	X	X	\$45,485	\$59,987	\$68,886
7	\$21,170	X	X	\$51,253	\$67,595	\$77,623
8	\$23,552	X	X	\$57,022	\$75,202	\$86,359

South Dakota Medical Services Expenditures and Enrollees

