

East River Appropriations Tour - 2009

Agenda

Monday, August 10th

- 1:00 pm SDSU
- 1:00-2:15-Innovation Campus
 - 2:15-2:30- Drive-by of new facilities on campus
 - 2:30-3:15-Dairy Plant including ice cream treats
 - 3:15-3:30- Drive-by of new facilities on campus con't
- 3:30-4:15 pm URC (United Retirement Center) daycare/nursing home
- 4:15-5:30 pm ADVANCE (Community Support Provider f/k/a ATC)
- 6:00 pm Social and Dinner sponsored by SDSU (tent East of Art Center)
- Following dinner Stay in Brookings-Fairfield Inn

Tuesday, August 11th

- 8:00-9:00 am Drive to Sioux Falls
- 9:00-11:30 am State Penitentiary
- Noon-2:30 pm GEAR Building/University Center & Sioux Falls Chamber
- lunch, discussion and tour
- 2:45 – 3:45 pm SDN (REED Network)
- 4:00 – dinner Investment Council
- discussion and dinner
- Following dinner Drive to Yankton-Best Western Kelly Inn

Wednesday, August 12th

- 7:00-8:00 am Breakfast at Avera Sacred Heart Pavilion
- 8:00-10:30 am Human Services Center
- 10:45-11:45 am Drive to Springfield
- Noon-3:00 pm Mike Durfee State Prison
- lunch, discussion and tour

Lodging:

Monday night: Fairfield Inn, Brookings ··605-692-3500

Tuesday night: Best Western Kelly Inn, Yankton ··605-665-2906

Monday, August 10

1:00 – 3:30 pm

SDSU

1:00-2:15-Innovation Campus

2:15-2:30- Drive-by of new facilities on campus

2:30-3:15-Dairy Plant including ice cream treats

3:15-3:30- Drive-by of new facilities on campus con't

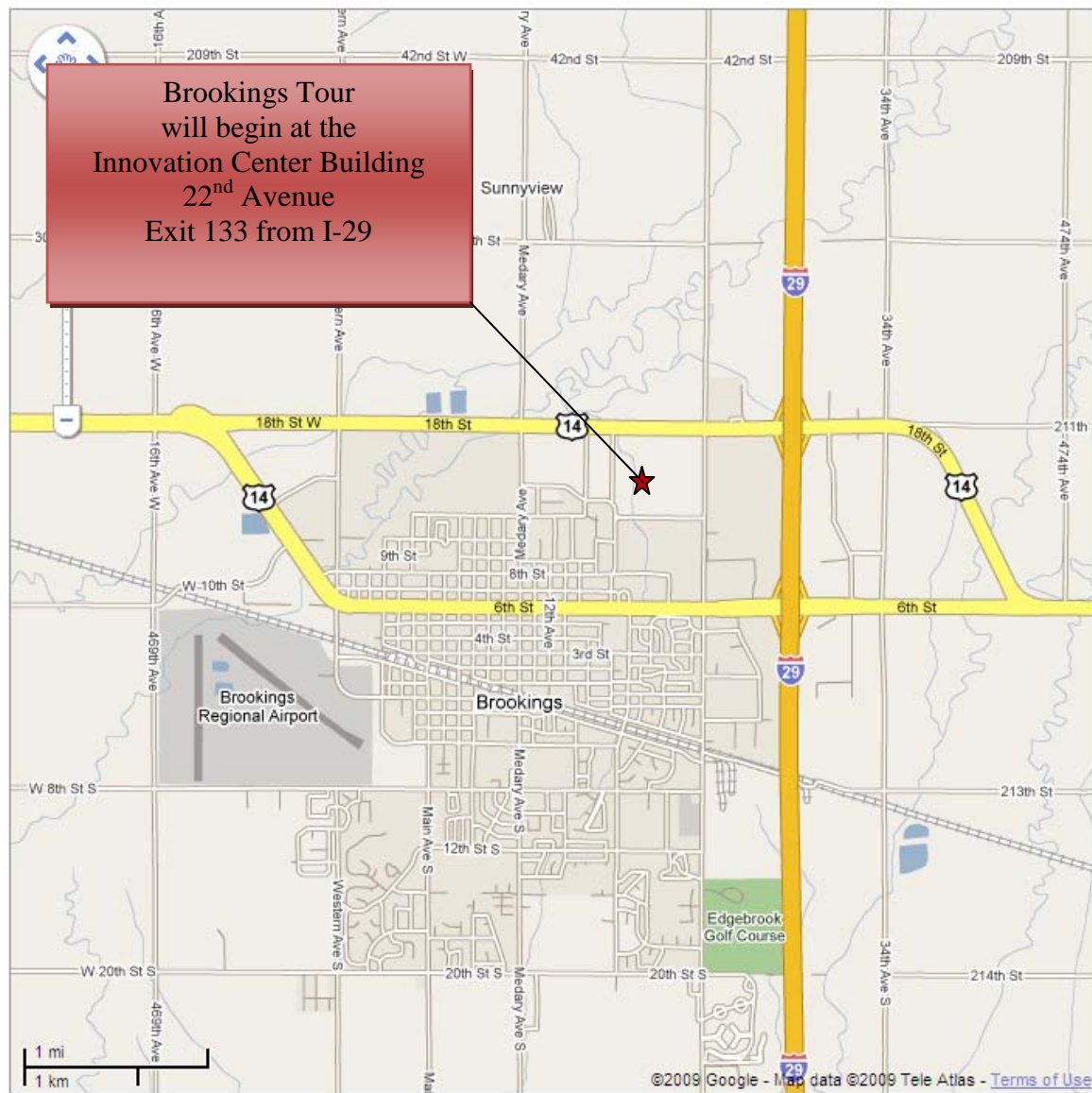
The following are directions to the SDSU Innovation Campus – (Map on next page)

If you are driving from the North on I-29:

1. Exit 133 – Volga/Arlington Exit
2. Turn LEFT onto US-14 Bypass/18th Street
3. Turn LEFT onto 22nd Avenue and drive south
4. When entering 22nd Avenue you will see a building under construction on the east corner of 22nd Avenue/US 14-Bypass (the SDSU Seed Technology Building)
5. Continue driving south
6. The next building you will see to the East is the Innovation Center Building
7. Turn LEFT onto the double-drive main entrance of the SDSU Innovation Campus
8. Continue driving to roundabout that contains the SDSU Innovation Campus signage
9. The road will bend slightly to the right at the roundabout, continue driving
10. Once you reach the end of the roadway, you will turn into the Innovation Center Building
11. There are two parking lots – all guests and visitors must park in the west parking area (the east parking lot is for employees only and all doors on the east side of the building are secured, therefore you have to have a special badge to enter through the east/employee entrance)
12. Guests and Visitors should enter through the west front glass double doors

If you are driving from the South on I-29:

1. Exit 133 – Volga/Arlington Exit
2. Turn RIGHT onto US-14 Bypass/18th Street
3. Turn LEFT onto 22nd Avenue and drive south
4. When entering 22nd Avenue you will see a building under construction on the east corner of 22nd Avenue/US 14-Bypass (the SDSU Seed Technology Building)
5. Continue driving south
6. The next building you will see to the East is the Innovation Center Building
7. Turn LEFT onto the double-drive main entrance of the SDSU Innovation Campus
8. Continue driving to roundabout that contains the SDSU Innovation Campus signage
9. The road will bend slightly to the right at the roundabout, continue driving
10. Once you reach the end of the roadway, you will turn into the Innovation Center Building
11. There are two parking lots – all guests and visitors must park in the west parking area (the east parking lot is for employees only and all doors on the east side of the building are secured, therefore you have to have a special badge to enter through the east/employee entrance)
12. Guests and Visitors should enter through the west front glass double doors



Teresa McKnight, CEO & Executive Director ♦ 605-690-5363

SDSU Innovation Campus – The South Dakota State University Innovation Campus is the first research park to be developed in the state of South Dakota. The 125 acre SDSU Innovation Campus' Master Plan is a plan to:

- o Develop clusters of buildings with focus on wind energy, bio-fuels, agriculture, engineering, software and hardware development, pharmaceutical research, infectious diseases, computers/electronics, information technology, medical biotech, just to name a few.
- o Construct buildings with a mix of office, laboratory, proto-type production, educational, and meeting facilities ranging in height from one to three stories. Full build-out planned for more than one-million square feet of state-of-the-art facilities.
- o Create pedestrian linkages between all buildings to stimulate collaboration and sharing of ideas.
- o Construct state-of-the-art buildings to house innovative scientists and researchers, and leading companies on the cutting edge of new ideas and technologies.

The SDSU Innovation Campus is the product of the SDSU Growth Partnership, a 501(c)(3) non-profit corporation whose partners include Brookings County, the City of Brookings, Brookings Economic Development Corporation, South Dakota State University, SDSU Foundation, and individuals.

NOTE: SDSU will provide the transportation to all tour locations in Brookings after arrival at the Innovation Campus.



SDSU Dairy Plant – The new SDSU dairy plant project is a university/ industry collaboration. Industry partners who joined the Jackrabbit Dairy Council include the American Dairy Association of South Dakota, Davisco Foods International, Valley Queen Cheese Factory, and Wells Dairy. Other manufacturing members include: Glanbia Foods, Hilmar Cheese, and Southwest Cheese Company. In addition, industry suppliers and foundation members include Dairy Management, Inc. (DMI), Ecolab, the S.A. Education Foundation, and the SDSU Foundation.

The 13,000 square foot university dairy plant will be completely modern. It will be attached to the existing dairy plant, which will be used as supporting space for the new dairy plant. The original plant was built in 1962 and no longer meets current needs for Dairy Manufacturing teaching, research, and service activities.

Legislative History: In 2006, SB20 was approved by the Legislature authorizing the construction of the dairy manufacturing plant at SDSU using private donations in the amount of \$4M. In the two most recent legislative sessions, the Legislature approved changes to the authorizing legislation that increased the amount to \$5.852M with an option to increase another 25% if additional donations were secured.

South Dakota State University Capital Improvement Projects - June 2009

	Ten-Year Plan Science or Critical M&R	Legislative Action / Year	Fund Type	Legislative Approved Amount	Last Board Action	Project Status	Projected Completion Date
ACADEMIC FACILITIES							
Health Sciences Complex/Shepard Renovation (AKA Avera Health & Science Center)	2001/2005	HB1084-2008	HEFF	\$ 24,000,000	Apr-07	Construction	Spring 2011
			Donations	\$ 27,000,000			
				\$ 51,000,000			
Administration Building Life Safety Upgrades	Critical	HB1101-2007	Student Fee Bonds	\$ 1,800,000	Dec-08	Construction	Winter 2009
			Deferred Maintenance Savings	\$ 554,611			
			HEFF	\$ 159,881			
				\$ 2,514,492			
Ag Hall	Science	HB1085-2008	Bonds	\$ 8,006,075	Dec-08	Bid	Winter 2010
Briggs Library Remodel			Local	\$ 900,000	Apr-09	Facility Statement	Winter 2009
Dykhouse Athlete Development Center		HB1080-2008	Donations	\$ 6,000,000	Dec-07	Construction	Winter 2009
Dairy Microbiology Building Renovation	Science	HB1085-2008	Bonds	\$ 8,259,250	Dec-08	Bid	Winter 2010
New Dairy Processing Unit		HB1082-2008	Donations	\$ 5,852,000	Oct-07	Design	Summer 2010
Fire Alarm Systems Replacement - Various Buildings	Critical	HB1101-2007	Student Fee Bonds	\$ 1,700,000	Jun-07	Construction	Summer 2010
Harding Hall South Addition		SB53-2007	Donations	\$ 6,500,000	Jun-07	Final Inspection	Spring 2009
Harding Hall South - 4th Floor			Other	\$ 1,035,449	Dec-08	Program Plan	
Northern Plains Biostress Classroom Renovation			Local	\$ 1,000,000	Mar-08	Completed	Winter 2008
Northern Plains Biostress Basement Renovation			Local	\$ 1,800,000	Dec-08	Construction	Summer 2009
Physical Ed Center - Exit Stair Replacement	Critical	HB1101-2007	Student Fee Bonds	\$ 800,000	Jun-07	Completed	Spring 2009
Physical Ed Center - Team Rooms Renovation			Donations	\$ 530,000	Oct-07	Completed	Spring 2009
			Title IX	\$ 300,000			
				\$ 830,000			
Seed Technology Building		SB56-2007	Donations	\$ 6,500,000	Dec-06	Construction	Fall 2010
South Dakota Art Museum			HEFF M&R	\$ 1,800,000	Dec-08	Facility Statement	
South Loop Extension/Steam Condensate Return Utilities			HEFF M&R	\$ 3,800,000	Dec-08	Program Plan	
Student Wellness Center/Locker Room Renovation		HB1011-2006	Local	\$ 569,838			
			City	\$ 500,000			
			Donations	\$ 1,775,000			
			GAF	\$ 8,711,270			
			Title IX	\$ 168,892			
			M&R Fee	\$ 375,000			
				\$ 12,100,000			
REVENUE FACILITIES							
Binnewies Hall - Bathroom Renovations			Local	\$ 1,800,000	Apr-09	Construction	Fall 2009
Larson Commons Renovation			Local	\$ 536,530	Dec-08	Construction	Summer 2009
Mathews Hall Renovation			Local	\$ 973,947	Apr-09	Construction	Fall 2010
New Residence Hall			Bonds/Local	\$ 20,347,185	Apr-09	Construction	Fall 2010
Student Union - Dining Expansion & Additional			Local	\$ 6,596,026	Apr-09	Design	Summer 2010

Monday, August 10
3:30 – 4:15 pm

United Retirement Center Avera 

(daycare/nursing home) ♦ 405 First Ave ♦♦ 605-692-5351 ♦ Sally Damm, Administrator



Connecting Generations

From its website:

The United Retirement Center Avera (URC) was built in 1959 with funds received from a Hill Burton Grant and donations from thousands of individuals living in and around Brookings County. In 1989, an additional 21 beds were built. Today the total number of licensed nursing home beds is 79. In 1991, congregate living apartments known as Park Place Apartments opened to serve the independent resident. In 1999, Park Place Assisted Living opened its doors to 36 individuals. URC Avera is a non-profit corporation operated under the direction of the 9-member Board of Directors.

The URC Child Development Center is a unique child care facility that brings together all generations of people from ages 4 weeks to 100 plus years of age in a shared space environment. The shared space brings about endless opportunities and advantages for both the children and residents who are served within our facility and provides a wonderful and unique learning environment. Our entire campus embraces the A.L.I.V.E. philosophy. This gives the children, families, and staff the benefits of having complete access to teaching staff, dietary staff, nursing staff, housekeeping staff, maintenance staff, recreational therapy staff, and administrative staff within a loving, safe, and homelike environment. We provide quality care and an educational environment that promotes the physical, intellectual, social, and emotional development of each child.

Monday, August 10

4:15 – 5:30 pm

ADVANCE

Community Support Provider (f/k/a ATC) ♦♦ 301 Division Ave ♦♦ 605-692-7852

Larry Franklin, Director



From its website:

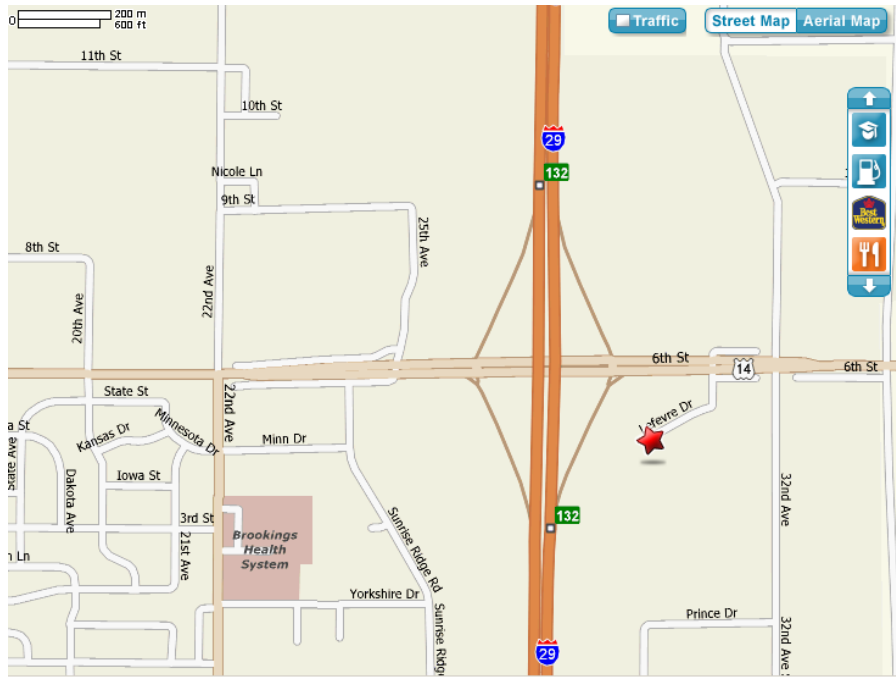
Founded in the early 1970's, **ADVANCE** is a private non-profit organization that supports more than 115 people with developmental disAbilities. These disAbilities range from mental retardation, cerebral palsy, epilepsy, autism, sensory impairments, and congenital disAbilities, to conditions caused by accident, traumatic brain injuries, spinal cord injuries, or diseases such as polio or muscular dystrophy. **ADVANCE** empowers people to make life choices through individualized plans of education and support. **ADVANCE** provides an array of services at a variety of levels, which ultimately support people at home, at work and within their community.

ADVANCE is one of nineteen Community Support Providers in the state of South Dakota. We have seven group homes and two apartment complexes. Funding is primarily through the purchase of service agreements with the State of South Dakota and its school districts. The primary source is the Title XIX Medicaid Home and Community Based Waiver Program. Other sources come from the production work done at the training center, United Way donations, county funds, private donations, and grants.

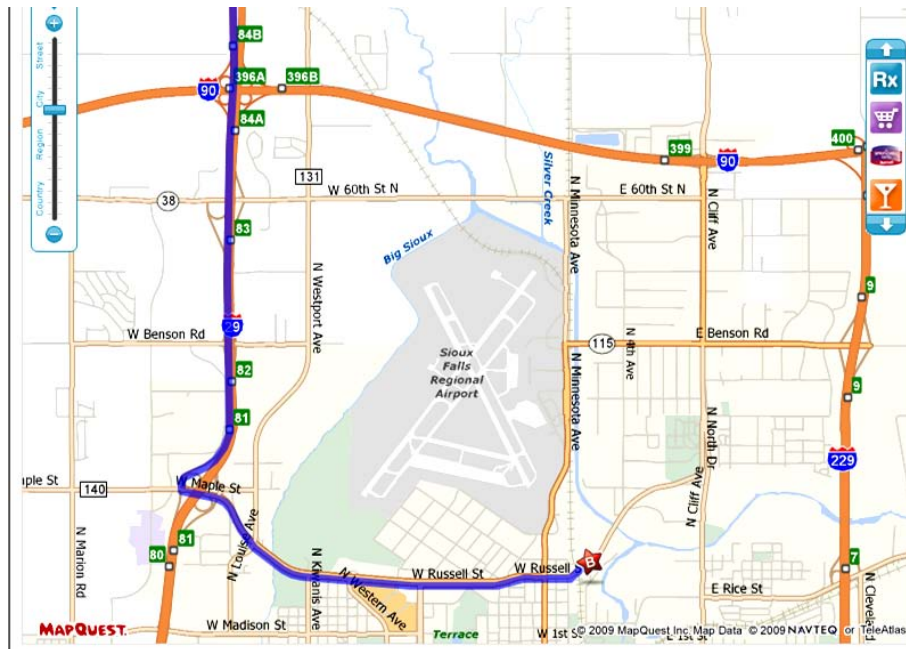
ADVANCE employs about 200 people working in a variety of areas all focused on fulfilling our mission and vision through personalized services and supports. Direct Support Professionals are the foundation to making sure people are living the life they want. This can mean going grocery shopping, going to the movies, passing medications, helping with activities of daily living as well as forming relationships with people. Direct Support Professionals are essential in providing Education, Experience and Exposure as well as advocating for the person.

ADVANCE supports, encourages and actively seeks connections and personal relationships in our community. We have participated in the Hobo Day Parade; we volunteer for Brookings Area Habitat for Humanity and are very active in many churches. We have also held food and clothing drives for the Brookings Domestic Abuse Shelter and have participated in ringing the bell for the Salvation Army for their Christmas drive. In return many people and organizations volunteer time and resources in support of **ADVANCE**. ABATE puts on an annual pancake benefit, local churches provide group and individual bible studies and many individuals spend time just hanging out with people supported.

Monday, August 10
Stay at Fairfield Inn – Brookings
605-692-3500
3000 LeFevre Drive



Tuesday, August 11
8:00-9:00 am - drive to Sioux Falls
9:00-11:30 am
State Penitentiary
Doug Weber, Warden ♦ 605-367-5050



	1: Start out going EAST on US-14/6TH ST toward 5TH AVE. Continue to follow US-14 E.	1.8 mi
	2: Merge onto I-29 S toward SIOUX FALLS.	51.1 mi
	3: Take the MAPLE STREET exit, EXIT 81, toward RUSSELL STREET/ARENA AND CONVENTION CENTER.	0.5 mi
	4: Turn LEFT onto W MAPLE ST.	0.2 mi
	5: Stay STRAIGHT to go onto W RUSSELL ST.	2.5 mi
	6: W RUSSELL ST becomes N NORTH DR.	0.2 mi
	7: End at 1600 N NORTH DR, on the RIGHT.	0.0 mi

*****Please bring your photo ID.*****

The South Dakota State Penitentiary is located in northern Sioux Falls, occupying approximately thirty acres. First constructed as a territorial prison in 1881, it became the South Dakota State Penitentiary when South Dakota was granted statehood in 1889. Though a large portion of the original buildings remain, numerous structural changes have occurred over the years.

The main Penitentiary facility contains three housing units. The G. Norton Jameson Annex began housing inmates in February 1993. The Jameson Annex contains three housing units within a secure perimeter and a minimum security unit known as Unit C, which is located outside the perimeter fence.

Inmate employment within the Penitentiary falls into two basic categories; institutional support and prison industries. Institutional support includes those employed in food service, as clerks for various departments, as cell orderlies and those working in maintenance. Prison Industries consists of upholstery, printing, sign, decal, license plates, carpentry, book bindery, machine shop, Braille unit, garments, and data entry. All but the garment and data entry work is done at the Penitentiary. Most of the work is done for government agencies.

Inmates are offered literacy, Adult Basic Education, and GED classes.

The state Department of Health provides medical, dental, and optometric services for the adult corrections system. The state Department of Human Services provides mental health and chemical dependency services. Treatment is also offered for sex offenders.

Tuesday, August 11

Noon – 2:30 pm

University Center/GEAR Building

4801 N Career Ave ♦ Mark Lee, Executive Dean ♦ 605-367-5380

Lunch sponsored by: Sioux Falls Chamber

- From the State Penitentiary, turn right on North Drive and travel south. North Drive becomes W Russell St. and after approximately 2.5 miles, W Russell St. becomes W. Maple St.
- Travel over I-29 and turn right at the stop light intersection of N. Career and Maple/Russell
- After one mile you will come to a 4 way stop sign.
- Keep going straight through the intersection of Career and Benson
- The road will curve around and you will see a "round about," follow it through to the building on the west (your left side). You will not go under the skywalk....use the west entrance.





Actual location is 4801 N. Career Avenue

Meet at Avera Hall for lunch/discussion. Avera Hall is in the classroom building which is on the west side of Career Avenue. Parking is located west of the building



In 2006, the Board of Regents was authorized to accept a \$5.8M grant from the Great Plains Education Foundation for the purpose of acquiring 263 acres of land from the state Department of Transportation. In addition to the \$8M from the State General Fund for the classroom building, the Regents also approved \$7.7M from the state's Higher Education Facilities Fund (HEFF) to construct the first two phases of the University Center Classroom Building (\$15.7M total cost). The classroom facility, which opened in January of this year, is almost 60,000 square feet and houses classrooms, a physics lab, computer labs, an art classroom, offices, study alcoves, and a journalism studio.

The \$6.3M center for graduate education and applied research, which is known as the GEAR Center, was also built on this site and opened in April of this year. The GEAR Center was funded by \$4.3M in federal funds and \$2M from the HEFF. The GEAR Center is nearly 24,000 square feet and home to the Center for Light Activated Materials, which is one of six 2010 research centers established in South Dakota to conduct focused research in areas of national and international significance. The Centers focus on discoveries that can be commercialized.

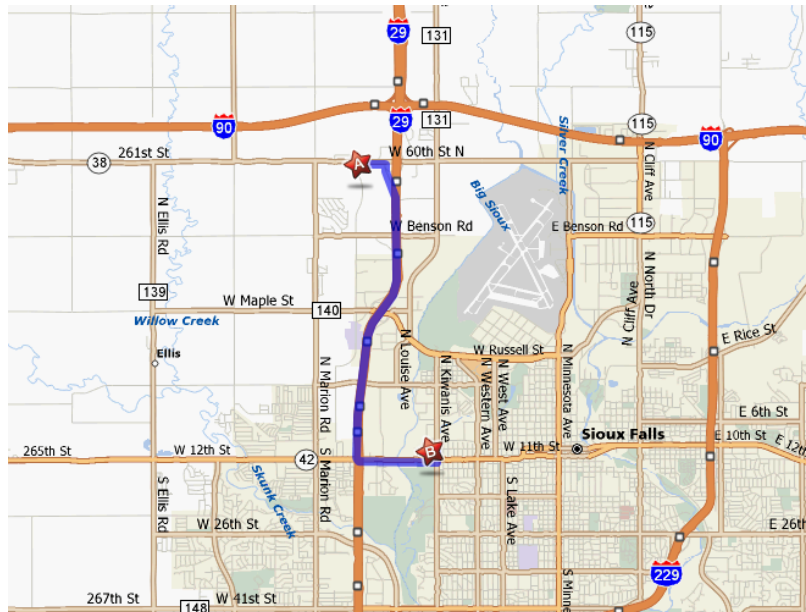
Tuesday, August 11

2:45-3:45 pm

SDN (REED Network)

2900 W 10th St ♦ 605-367-0814

Mark Shlanta, CEO ♦ Vernon Brown, Manager of Marketing & Member Relations



★ W 60th St N & N Career Ave
Sioux Falls, SD 57107
Online Offers: [Motels in Sioux Falls](#) | [Sioux Falls Restaurants](#) | [South Dakota Auto Insurance](#)

▼ Directions from A to B:

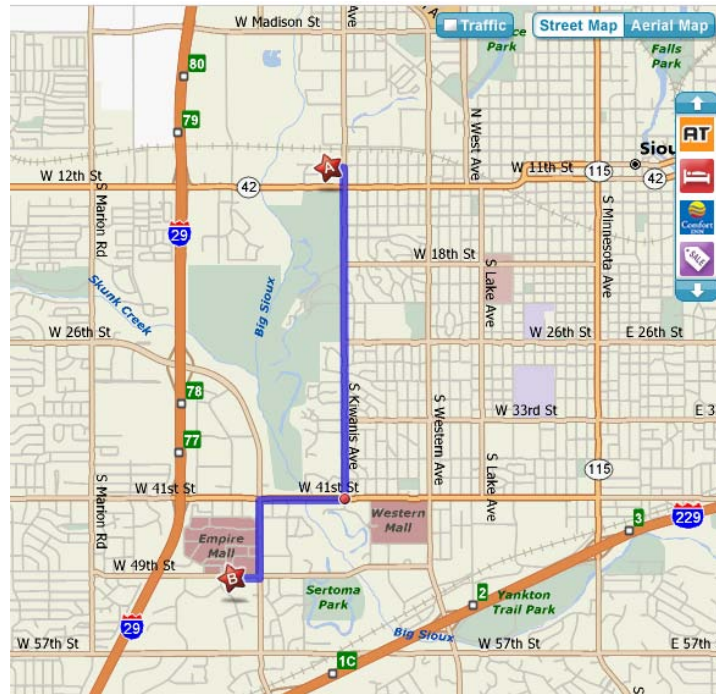
Step	Instruction	Distance
1	Start out going EAST on W 60TH ST N/ SD-38 toward N HARVESTORE RD.	0.4 mi
2	Merge onto I-29 S toward SIOUX FALLS.	3.8 mi
3	Take the SD-42/ 12TH STREET exit, EXIT 79, toward I-29-BL/ DOWNTOWN.	0.4 mi
4	Turn LEFT onto SD-42/W 12TH ST.	1.0 mi
5	Turn LEFT onto S KIWANIS AVE.	0.1 mi
6	Turn LEFT onto W 10TH ST.	0.2 mi
7	2900 W 10TH ST is on the RIGHT.	0.0 mi

★ SDN Communications
2900 W 10th St, Sioux Falls, SD 57104 - 605-367-0814
Online Offers: [Motels in Sioux Falls](#) | [Sioux Falls Restaurants](#) | [South Dakota Auto Insurance](#)

Total Travel Estimates: Time: 8 minutes Distance: 5.81 miles Fuel Cost: [Calculate](#)

The Research, Education, and Economic Development (REED) Network is a partnership between the public and private sector to bring ultra-high speed network services to South Dakota for the advancement of research, education, and the economy. The Governor proposed and the Legislature approved the REED Network project during the 2008 Legislative Session. The total amount budgeted in FY09 for the REED Network was \$14,070,557. The one-time budget items for the network totaled \$11,768,711 with \$8,000,000 coming from a Great Plains Educational Foundation grant and \$3,768,711 from a one-time state appropriation. The on-going budget for the network is \$2,301,846. The REED Network, which represents the underlying optical network contracted for with SDN Communications, closely follows I-90 and I-29 linking universities and research institutions to offer bandwidth of 50,000 Mega bits per second (Mbps). The REED Network links the following institutions: South Dakota State University – Brookings; University of South Dakota – Vermillion; Dakota State University – Madison; Northern State University – Aberdeen; Black Hills State University – Spearfish; SD School of Mines – Rapid City; University Center – Sioux Falls; EROS – rural Garretson; Sanford Lab at Homestake – Lead; and State Government – Pierre.

Tuesday, August 11
4:00-discussion followed by dinner
Investment Council
4009 W 49th St ♦ Matt Clark, State Investment Officer ♦ 605-362-2820
Curt Johnson, Chariman



**SDN Communications**
2900 W 10th St, Sioux Falls, SD 57104

Online Offers: [Hotels in Sioux Falls](#) | [Sioux Falls Restaurants](#) | [South Dakota Auto Insurance](#)

▼ Directions from A to B:

	1: Start out going EAST on W 10TH ST toward W 11TH ST.	0.2 mi
	2: Turn RIGHT onto S KIWANIS AVE.	2.2 mi
	3: Turn RIGHT onto W 41ST ST.	0.5 mi
	4: Turn LEFT onto S LOUISE AVE.	0.5 mi
	5: Turn RIGHT onto W 49TH ST.	0.2 mi
	6: 4009 W 49TH ST # 300 is on the LEFT.	0.0 mi

**Investment Council**
4009 W 49th St # 300, Sioux Falls, SD 57106

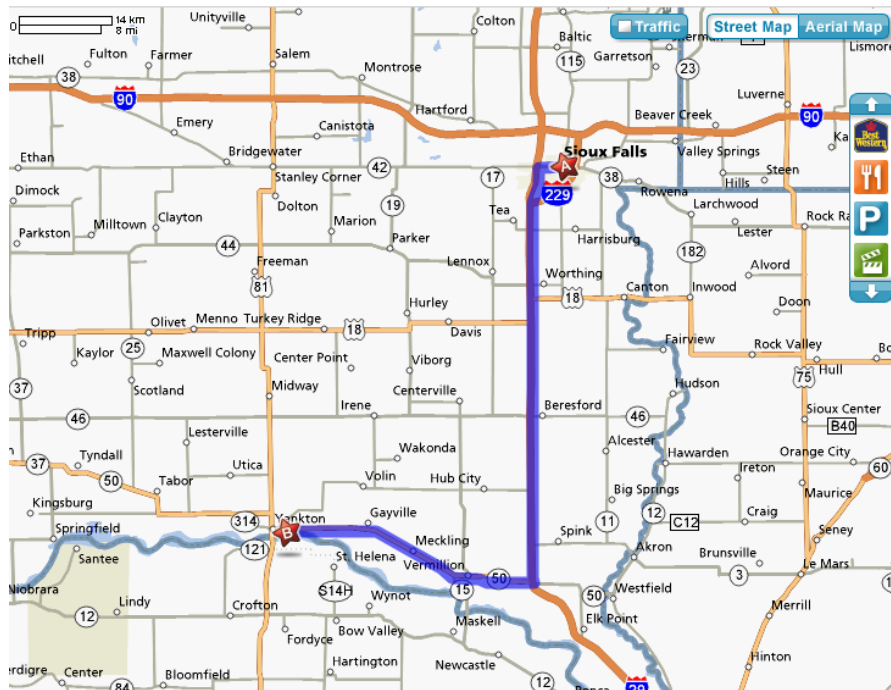
The State Investment Council manages the investments for the South Dakota Retirement System, the South Dakota Cement Plant Retirement Fund, the Cash Flow Fund for all state agencies, the School and Public Lands Fund, the Dakota Cement Trust, the Health Care Trust Fund, and the Education Enhancement Trust Fund. The Council also oversees the Higher Education Savings Plan. The entire portfolio amounts to more than \$8 billion. Following dramatic positive performance in recent years, earnings have fallen sharply with the current recession, e.g., negative by almost \$700 million in FY08.

The Investment Council has 28 FTEs and a FY10 budget of \$8.3M, none of which is General Funds.

Tuesday, August 11
Drive to Yankton

Stay at Best Western Kelly Inn

East of Yankton on Highway 50
605-665-2906



★ Sioux Falls, SD

Online Offers: [Motels in Sioux Falls](#) | [Sioux Falls Restaurants](#) | [South Dakota Auto Insurance](#)

▼ Directions from A to B:

START	1: Start out going NORTH on S PHILLIPS AVE toward E 10TH ST/ SD-42 W.	0.0 mi
WEST 42	2: Turn LEFT onto W 10TH ST/ SD-42 W.	0.6 mi
WEST 42	3: Turn SLIGHT LEFT onto SD-42 W.	2.2 mi
SOUTH 29	4: Merge onto I-29 S via the ramp on the LEFT.	52.5 mi
WEST 50	5: Merge onto SD-50 W via EXIT 26 toward VERMILLION/ YANKTON.	31.1 mi
END	6: End at 1607 E HIGHWAY 50.	0.0 mi

There are 0.2 miles between your ending location and the end of your driving directions. Use local maps to get from the end ending location.

★ Best Western Kelly Inn

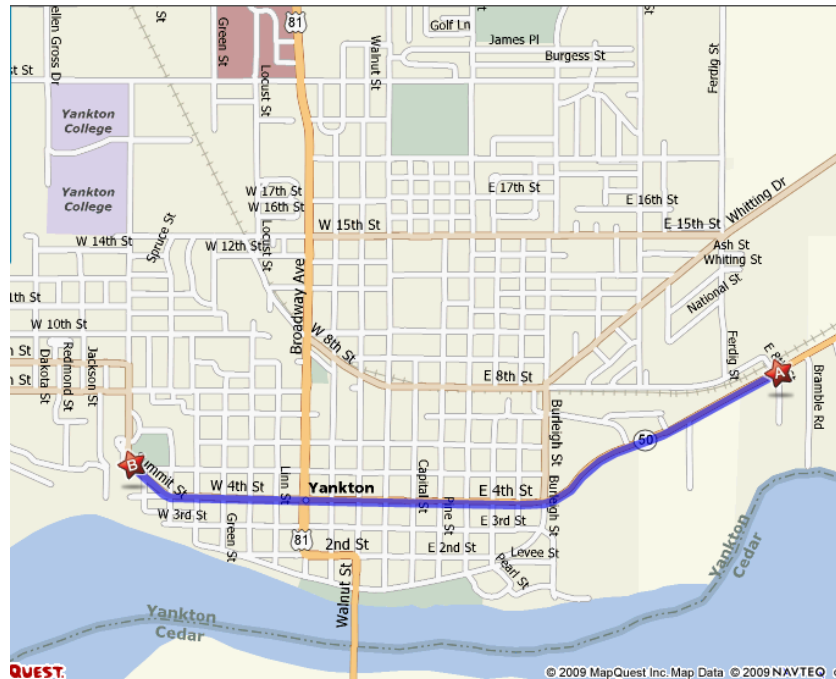
1607 E Highway 50, Yankton, SD 57078 - 800-780-7234

Online Offers: [Motels in Yankton](#) | [Yankton Restaurants](#) | [South Dakota Auto Insurance](#)

Total Travel Estimates: Time: 1 hour 32 minutes Distance: 86.34 miles Fuel Cost: [Calculate](#)



Wednesday, August 12
7:00-8:00 am
Breakfast at Avera Sacred Heart Pavilion



★ 1607 E Highway 50
Yankton, SD 57078-6406
Online Offers: [Motels in Yankton](#) | [Yankton Restaurants](#) | [South Dakota Auto Insurance](#)

▼ Directions from A to B:

Icon	Instruction	Distance
START	1: Start out going SOUTHWEST on SD-50 toward E 8TH ST.	1.5 mi
Yellow diamond	2: SD-50 becomes W 4TH ST/SD-52.	0.4 mi
Yellow diamond	3: Turn SLIGHT RIGHT onto SUMMIT ST/SD-52.	0.2 mi
END	4: End at 501 SUMMIT ST, on the LEFT.	0.0 mi

★ 501 Summit St
Yankton, SD 57078-3855
Online Offers: [Motels in Yankton](#) | [Yankton Restaurants](#) | [South Dakota Auto Insurance](#)

Total Travel Estimates: Time: 5 minutes Distance: 2.10 miles Fuel Cost: [Calculate](#)

The Pavilion is the newest building on the campus. **As you begin to curve right there is a large parking lot to your left and the Pavilion is right there. It is marked with large letters on the outside of the building.

In 1991, Governor George S. Mickelson directed that a study of the existing HSC campus be conducted. This study found it would be more costly to upgrade existing buildings than construct new ones specifically designed for patient treatment. Governor Mickelson advanced bills proposing design and construction of a new psychiatric facility which passed by an overwhelming majority of the 1992 Legislature.

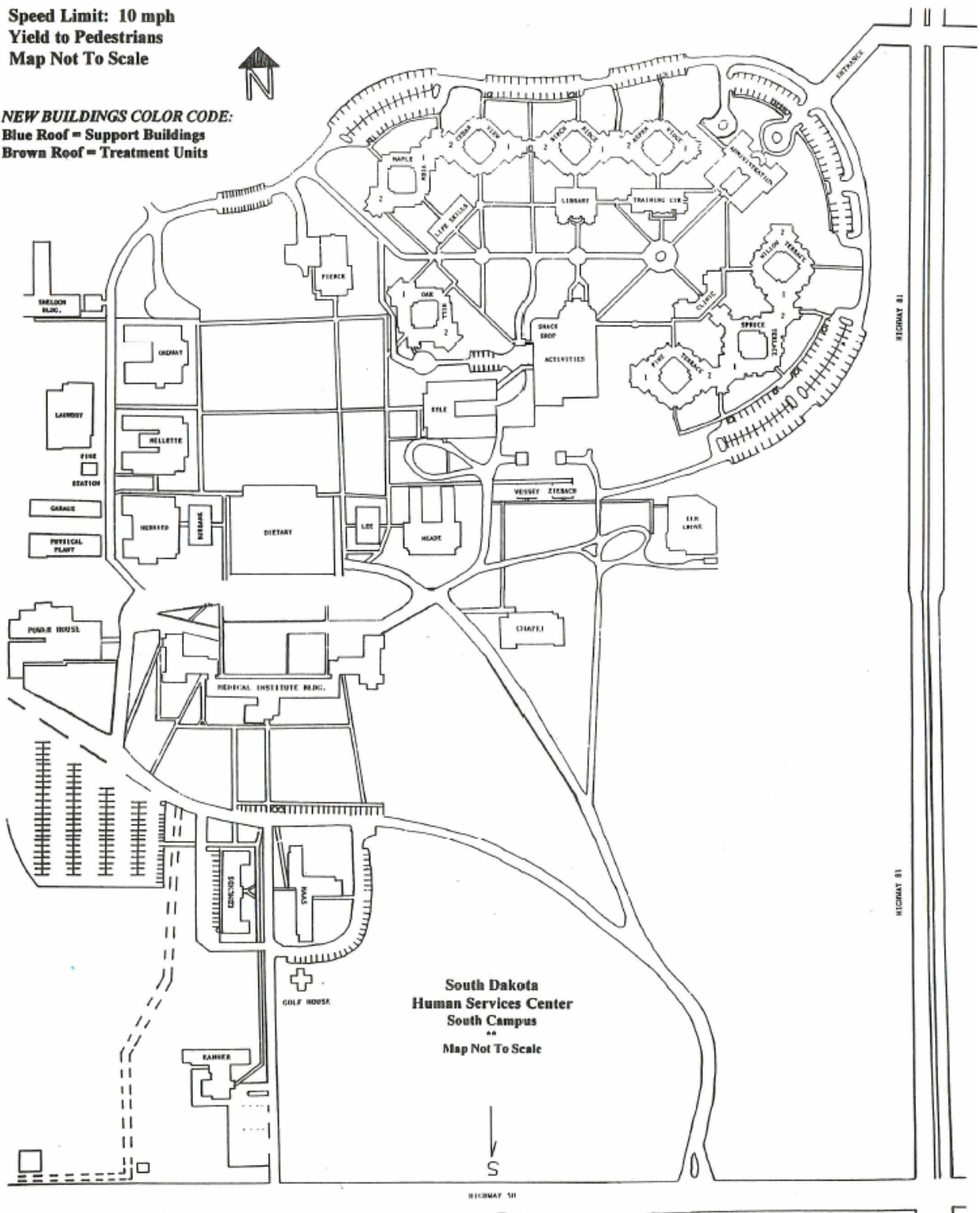
During the 2009 Legislative Session, the Department of Human Services proposed an addition to the admissions area of the HSC. The Legislature passed HB1033 which provided \$750,000 of other funds to design and construct the addition.

SOUTH DAKOTA HUMAN SERVICES CENTER

George S. Mickelson Center for the Neurosciences
North Campus

Speed Limit: 10 mph
Yield to Pedestrians
Map Not To Scale

NEW BUILDINGS COLOR CODE:
Blue Roof = Support Buildings
Brown Roof = Treatment Units



Maps

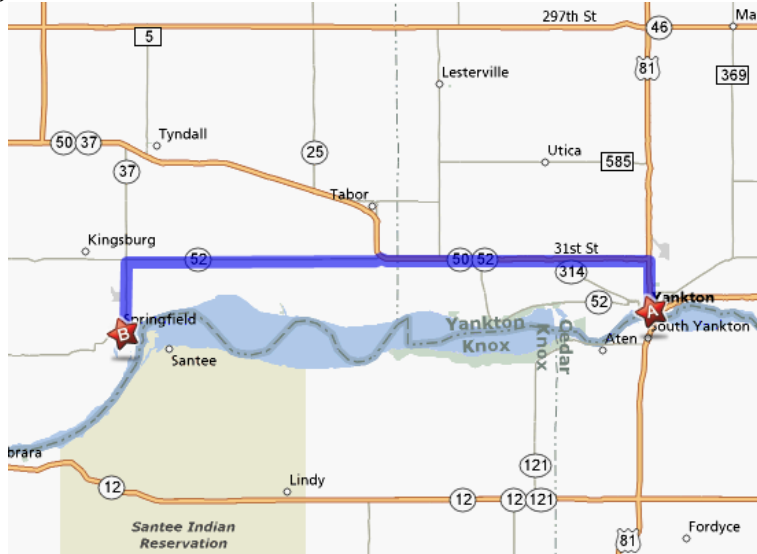
Wednesday, August 12

10:45-11:45 am – drive to Springfield

Noon-3:00pm-Mike Durfee State Prison (lunch/tour/discussion)

1412 Wood St ♦ Bob Dooley, Warden ♦ 605-369-2201

Yankton to Springfield:



Yankton, SD

Online Offers: [Motels in Yankton](#) | [Yankton Restaurants](#) | [South Dakota Auto Insurance](#)

▼ Directions from A to B:

START

1: Start out going NORTH on US-81 N/BROADWAY AVE/BROADWAY ST toward W 4TH ST/SD-50. Continue to follow US-81 N/BROADWAY AVE.

2.6 mi

2: Turn LEFT onto SD-50/31ST ST. Continue to follow SD-50.

12.9 mi

3: Turn LEFT onto SD-52.

12.2 mi

4: Turn LEFT onto SD-37.

3.8 mi

5: Turn RIGHT onto SD-37/8TH ST.

0.2 mi

END

6: Welcome to SPRINGFIELD, SD.

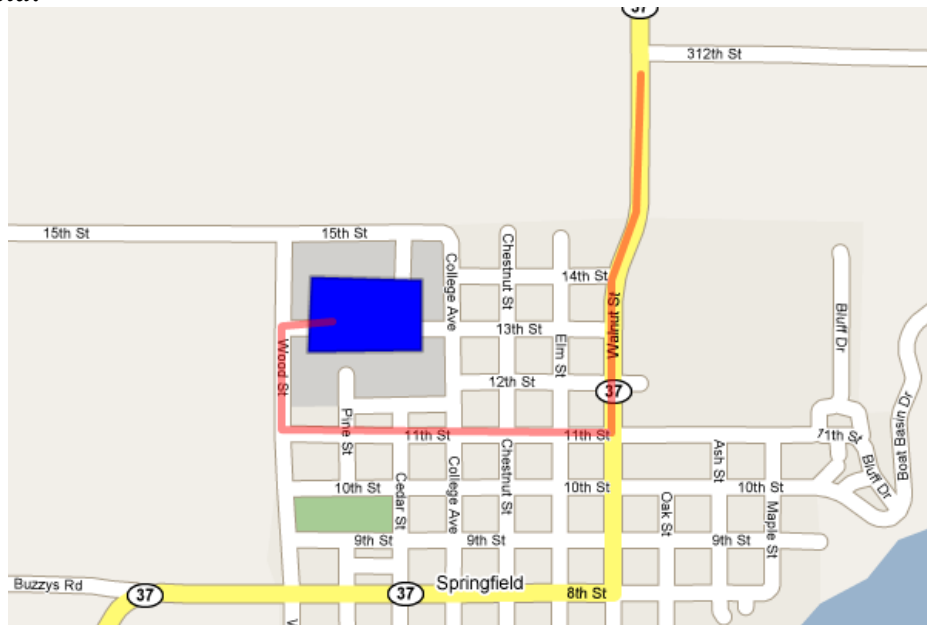
0.0 mi

Springfield, SD

Online Offers: [Motels in Springfield](#) | [Springfield Restaurants](#) | [South Dakota Auto Insurance](#)

Total Travel Estimates: Time: 48 minutes Distance: 31.75 miles Fuel Cost: [Calculate](#)

In Springfield:



*****Please bring your photo ID.*****

The Mike Durfee State Prison is located on the campus of the former University of South Dakota at Springfield. The 1984 Legislature closed USD/S and authorized the Board of Charities and Corrections to establish the correctional facility. Springfield State Prison opened in December of 1984, when the female inmates from the Women's Correctional Facility in Yankton were transferred to the new institution. Male inmates began transferring to the institution in January 1985.

The institution remained co-ed with both males and females located on the same campus for several years. With the opening of the Herm Solem Public Safety Center in Pierre in November 1997, the women were transferred to the South Dakota Women's Prison within the Solem Public Safety Center, and the Springfield State Prison became an all-male institution for the first time. On September 10, 1999, the prison was renamed in honor of Mike Durfee, Deputy Director of the South Dakota Department of Corrections.

Most inmates at MDSP are Low Medium custody inmates. There is also a disciplinary segregation unit at MDSP. The prison is home to many programs, including Literacy, Adult Basic Education, and GED classes. Vocational Education classes in Welding, Machine Tool, Auto Body, Landscape/Horticulture, and Auto Mechanics are also offered. Treatment programs are available for chemical dependents and sex offenders. Many of the inmate work programs are based at the Durfee State Prison.

Durfee State Prison also supervises minimum-security units in Yankton and in Rapid City.

The state Department of Health provides medical, dental, and optometric services for the adult corrections system. The state Department of Human Services provides mental health and chemical dependency services. Treatment is also offered for sex offenders.