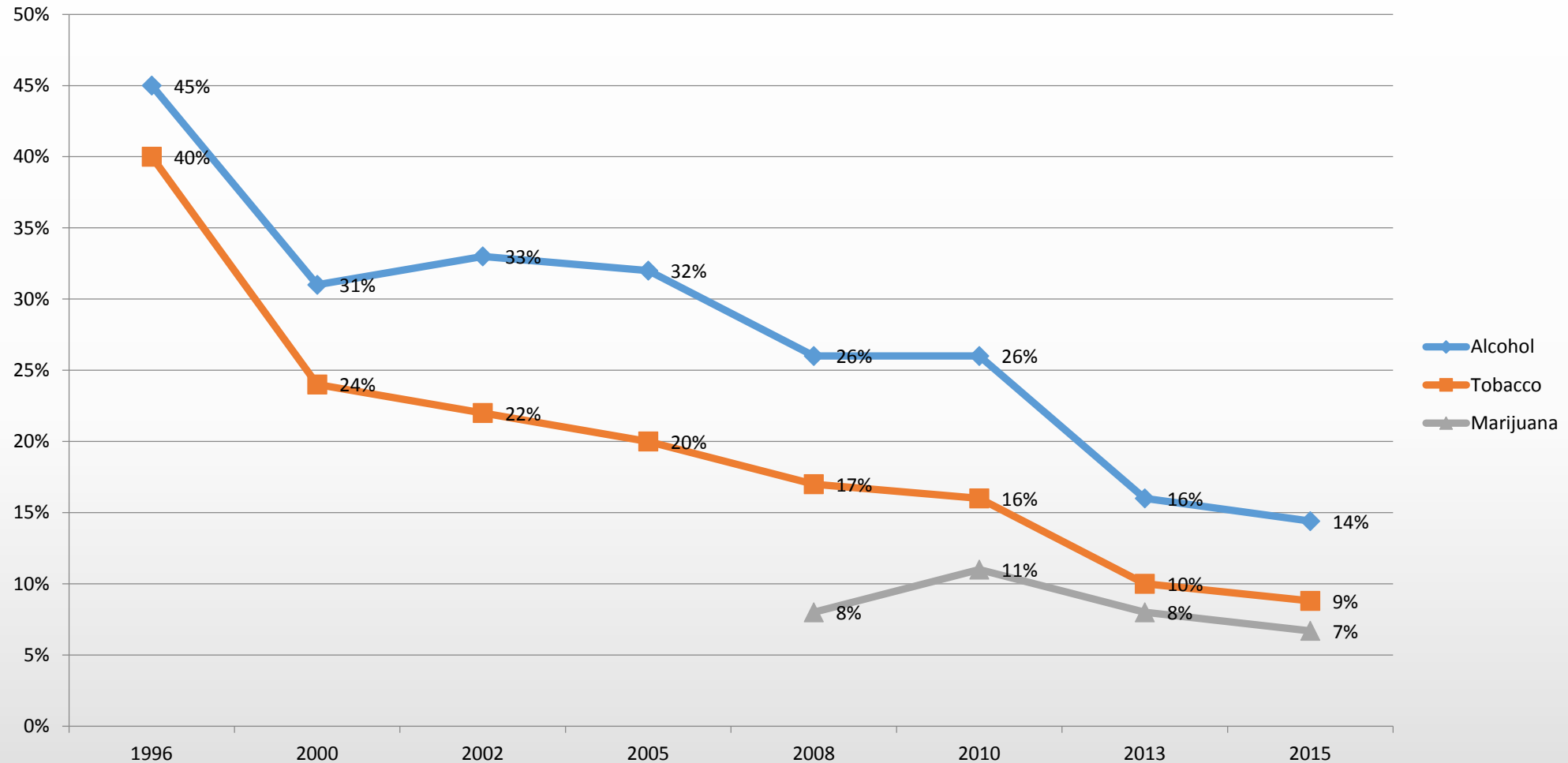


Our Efforts are making
a difference...

- School based prevention and early intervention programming through **Project SUCCESS and Positive Action at WMS & WHS**
- Partnerships with existing community organizations, agencies and resources through **Communities Mobilizing for Change on Alcohol**

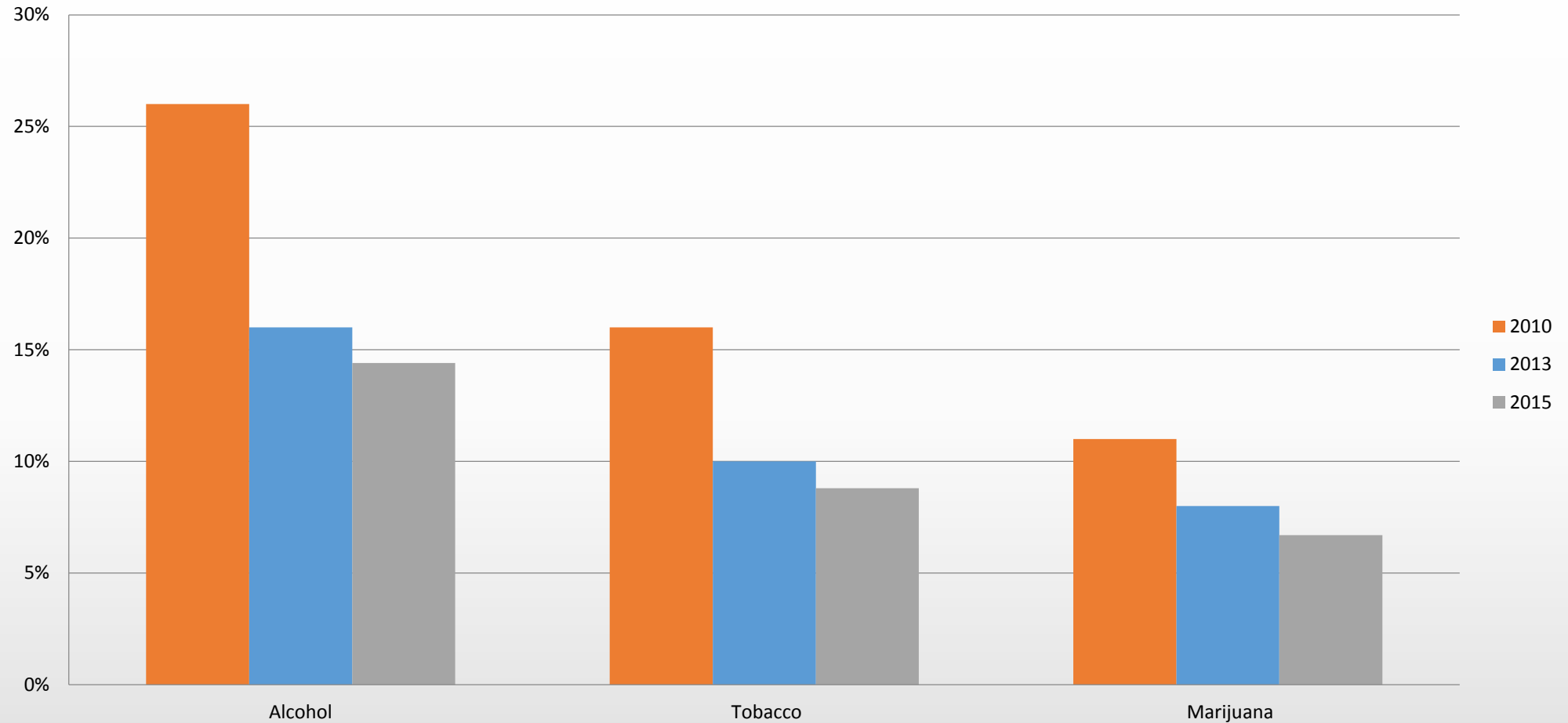
Kelli Rumpza, Certified Prevention Specialist
Watertown Healthy Youth Coordinator

30 Day Use among Watertown students grades 7-12



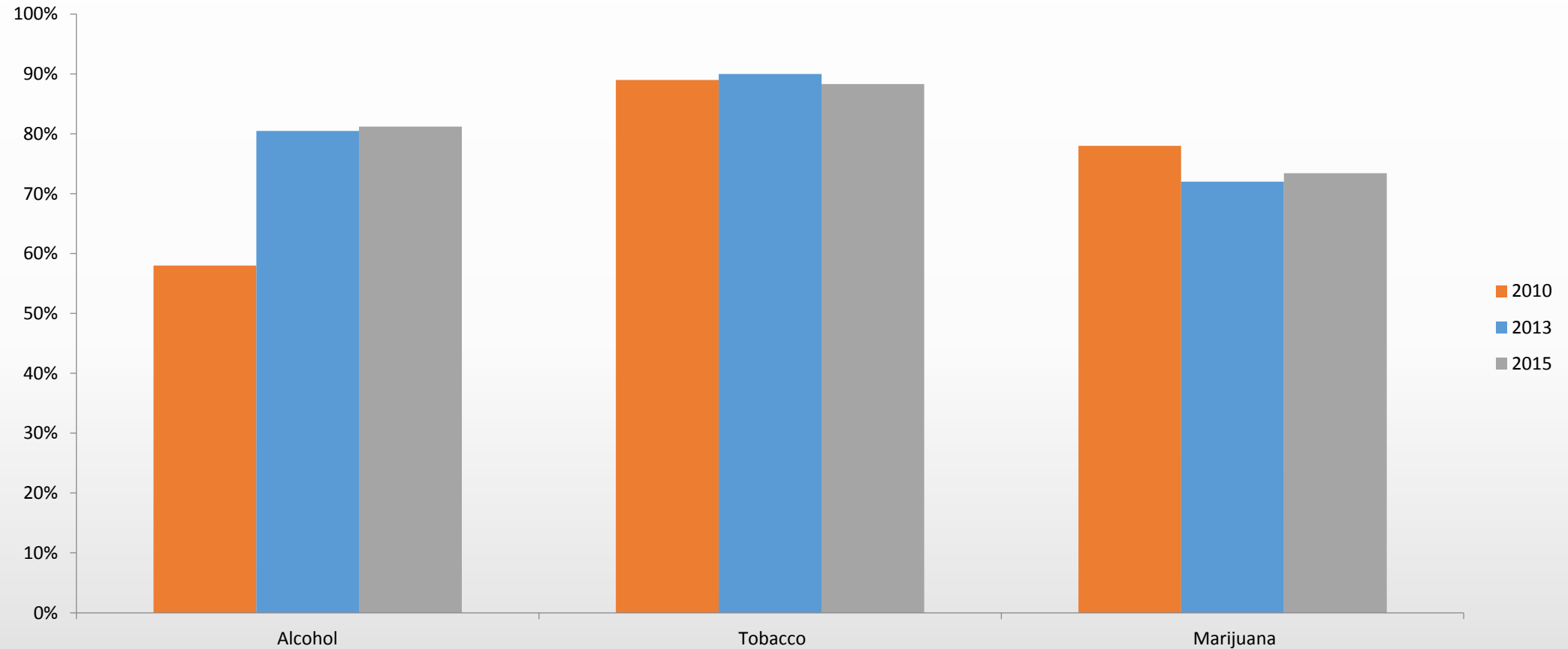
Source: Search Institute's Profile of Student Life survey administered to Watertown students grades 7-12, Fall 2010; PRIDE survey administered to Watertown students grades 7-12, Fall 2013 and Fall 2015.

30 Day Use of Watertown students grades 7-12



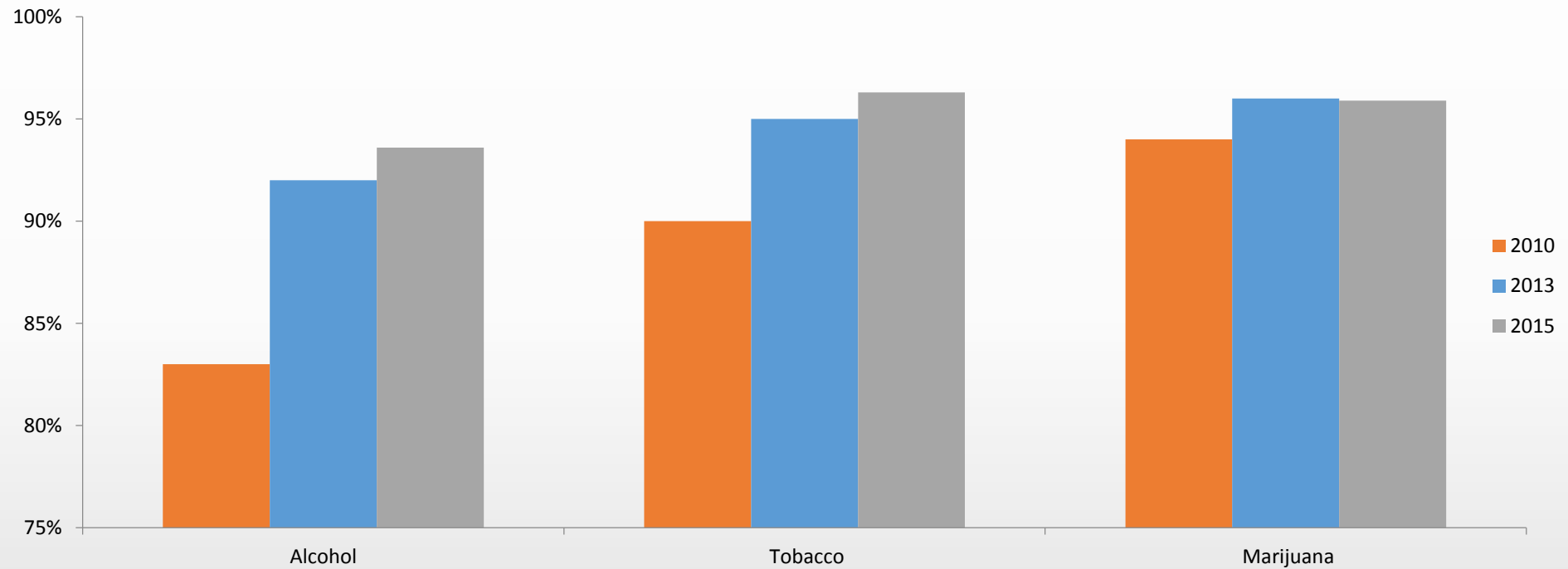
Source: Search Institute's Profile of Student Life survey administered to Watertown students grades 7-12, Fall 2010; PRIDE survey administered to Watertown students grades 7-12, Fall 2013, and Fall 2015.

Watertown Students Grades 7-12 Perception of Risk of Harm



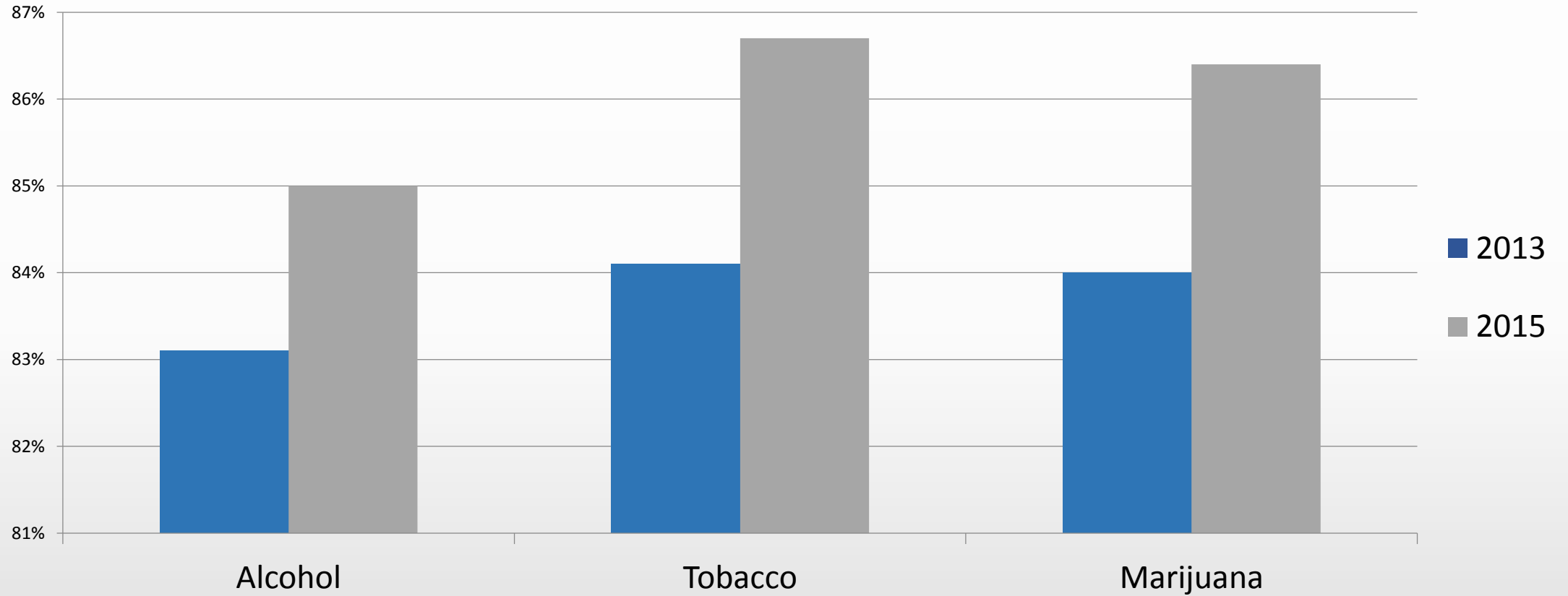
Source: Search Institute's Profile of Student Life survey administered to Watertown students grades 7-12, Fall 2010; PRIDE survey administered to Watertown students grades 7-12, Fall 2013 and Fall 2015.

Perception of Parental Disapproval of Use



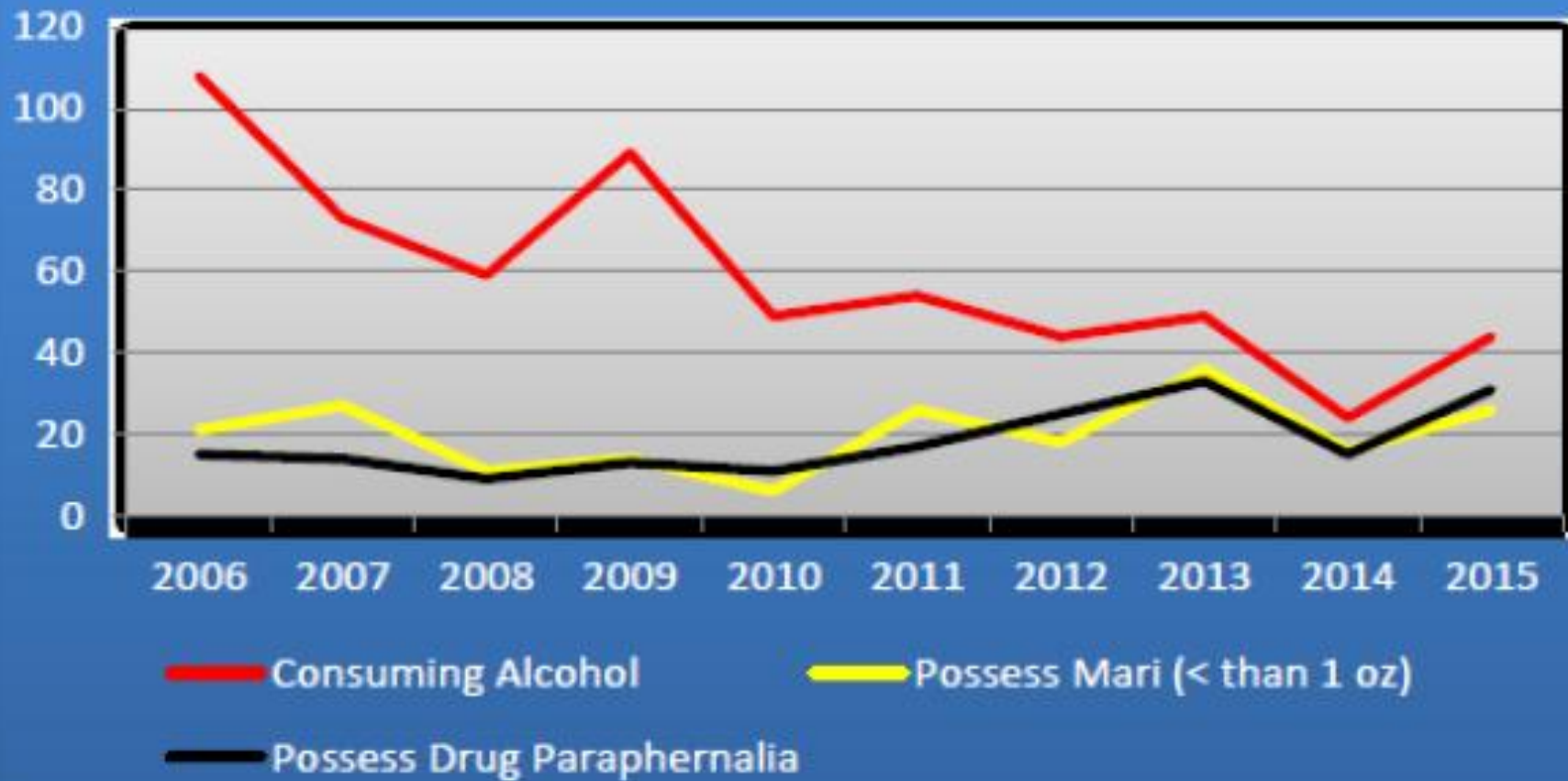
Source: Search Institute's Profile of Student Life survey administered to Watertown students grades 7-12, Fall 2010; PRIDE survey administered to Watertown students grades 7-12, Fall 2013 and Fall 2015.

Perception of Friend Disapproval of Use

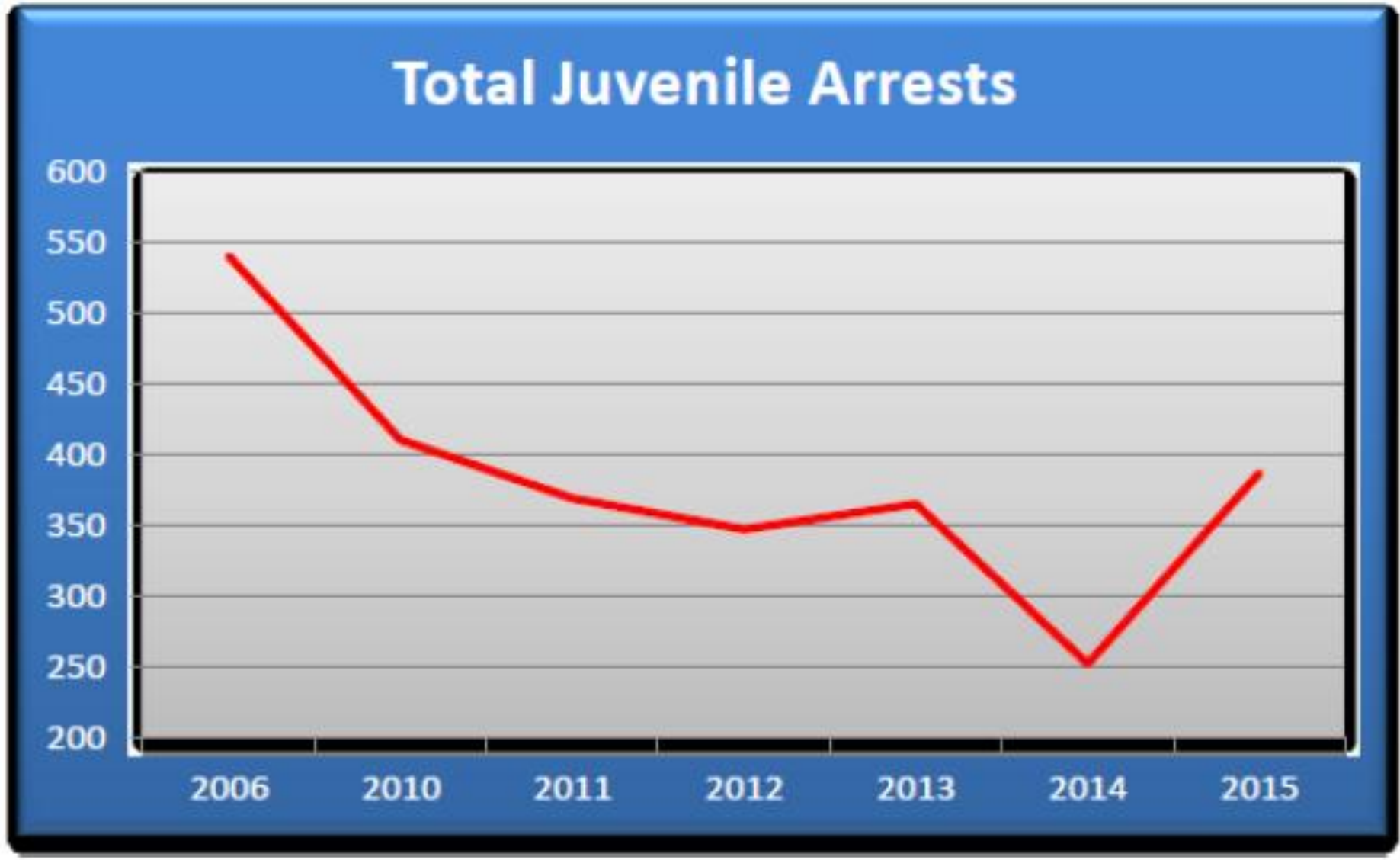


Source: PRIDE survey administered to Watertown students grades 7-12, Fall 2013 and Fall 2015.

Drug & Alcohol Arrests (Juveniles)



From Watertown Police Department Annual Report 2015



From Watertown Police Department Annual Report 2015

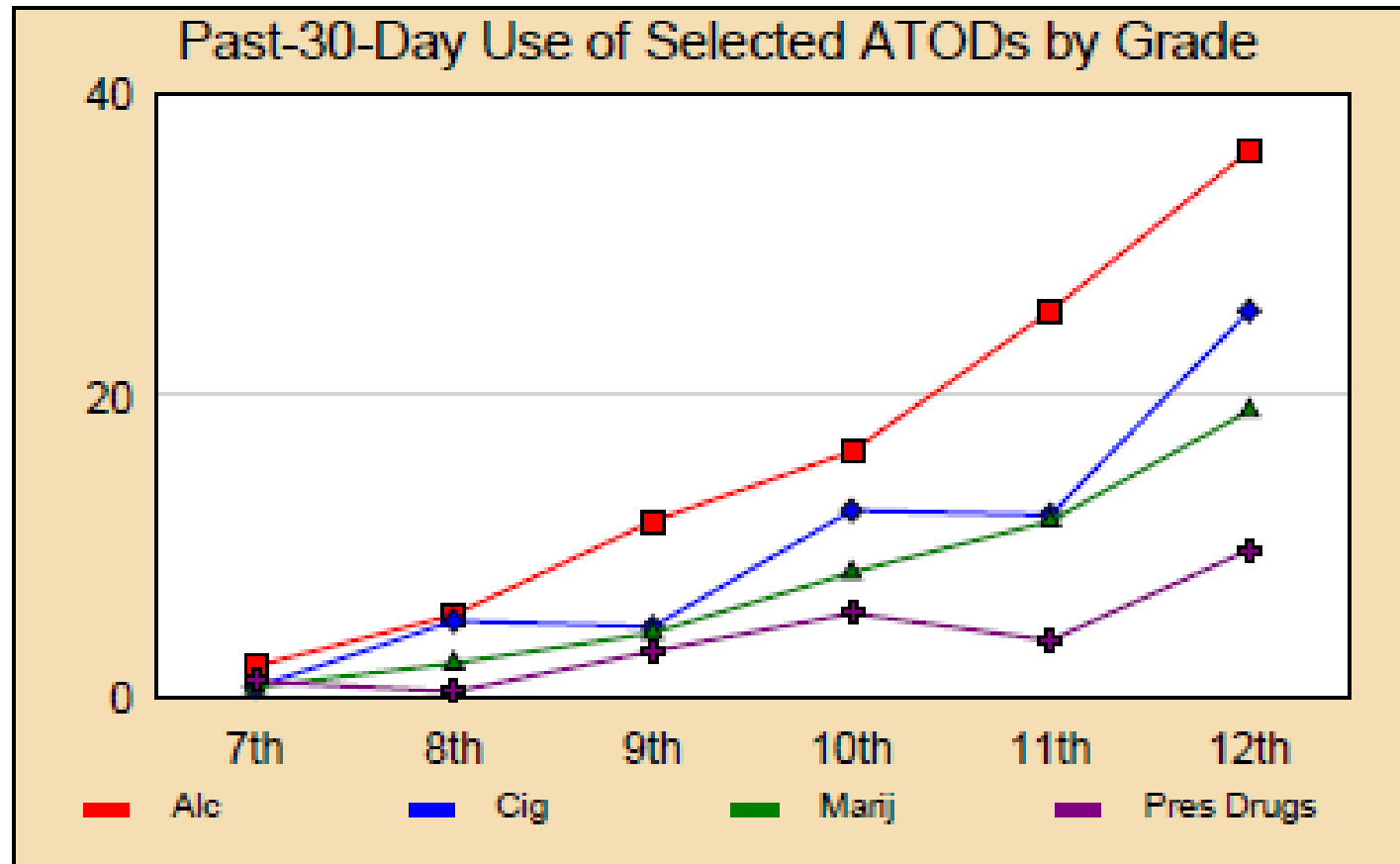
Watertown comparison to State and National

	PRIDE (2013) grades 9-12	YRBSS (2013) High School Data grades 9-12	
	Watertown	South Dakota	United States
Alcohol 30-day use	23.9%	30.8%	34.9%
Binge Alcohol use.	17.1%	17.2%	20.8%
Riding with a driver who had been drinking	14.2%	17.3%	21.9%
Cigarettes 30-day use	13.9%	16.5%	15.7%
Marijuana 30-day use	11.8%	16.1%	23.4%
Seriously considered attempting suicide	18.2%	16.9%	17.0%
Made a plan about how they would attempt suicide	11.8%	13.0%	13.6%
Texting and driving	* no data	61.3%	41.4%
Electronic vapors 30-day use	*no data	*no data	*no data

	PRIDE (2015) grades 9-12	YRBSS (2015) High School Data grades 9-12	
	Watertown	South Dakota	United States
Alcohol 30-day use	20.9%	28.0%	32.8%
Binge Alcohol use.	16.0%	14.3%	17.7%
Riding with a driver who had been drinking	15.2%	20.1%	20.0%
Cigarettes 30-day use	12.5%	10.1%	10.8%
Marijuana 30-day use	9.9%	12.4%	21.7%
Seriously considered attempting suicide	16.7%	16.1%	17.7%
Made a plan about how they would attempt suicide	10.9%	11.8%	14.6%
Texting and driving	41.8%	63.2%	41.5%
Electronic vapors 30-day use	20.8%	17.3%	24.1%

Past 30-day Use by Grade

2015 Pride Data



Where and When Students Use

2013 Pride Data

Table 5.3: Where Do Students Report Using

DRUG	AT HOME	AT SCHOOL	IN A CAR	FRIENDS' HOUSE	OTHER
Tobacco	6.0	1.5	7.0	6.2	5.5
Alcohol	9.0	0.5	2.4	14.5	6.3
Marijuana	2.4	0.6	4.3	6.7	3.1
Presc Drugs	1.9	0.8	0.7	1.3	1.5

2013 Pride Data

Table 5.4: When Do Students Report Using

DRUG	BEFORE SCHOOL	DURING SCHOOL	AFTER SCHOOL	WEEK NIGHT	WEEK END
Tobacco	5.0	2.4	7.8	6.9	8.5
Alcohol	0.7	0.6	2.0	2.9	20.9
Marijuana	1.5	1.0	3.1	4.0	8.3
Presc Drugs	1.5	0.9	1.1	1.5	2.5

2015 Pride Data

Table 5.3: Where Do Students Report Using

DRUG	AT HOME	AT SCHOOL	IN A CAR	FRIENDS' HOUSE	OTHER
Tobacco	4.8	1.4	5.7	4.5	4.3
Alcohol	7.2	0.3	1.1	11.8	5.9
Marijuana	2.8	0.8	3.9	4.5	3.6
Presc Drugs	2.3	0.8	0.9	1.6	1.9

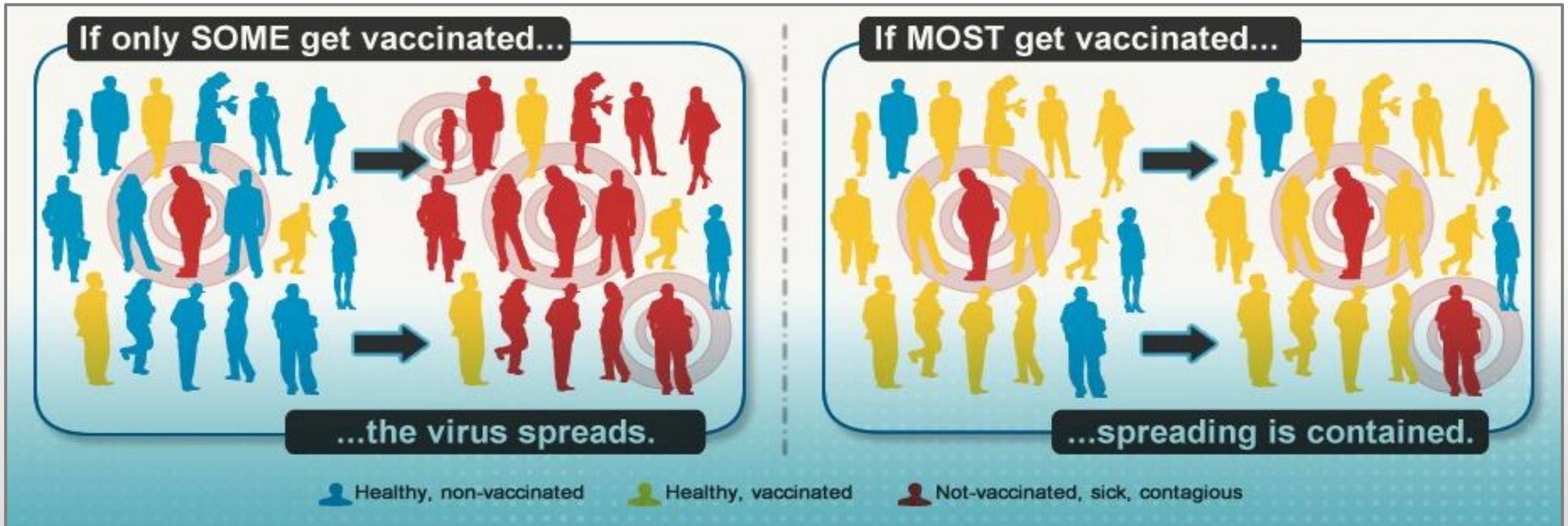
2015 Pride Data

Table 5.4: When Do Students Report Using

DRUG	BEFORE SCHOOL	DURING SCHOOL	AFTER SCHOOL	WEEK NIGHT	WEEK END
Tobacco	4.3	1.7	5.4	4.3	6.9
Alcohol	0.5	0.3	1.7	2.3	16.3
Marijuana	1.8	0.6	2.8	3.2	7.0
Presc Drugs	1.0	0.9	1.3	1.2	2.8

Prevention

Vaccination





Kelli Rumpza, Community Prevention Specialist

Human Service Agency

P: 884-3518

E: kellir@humanserviceagency.org