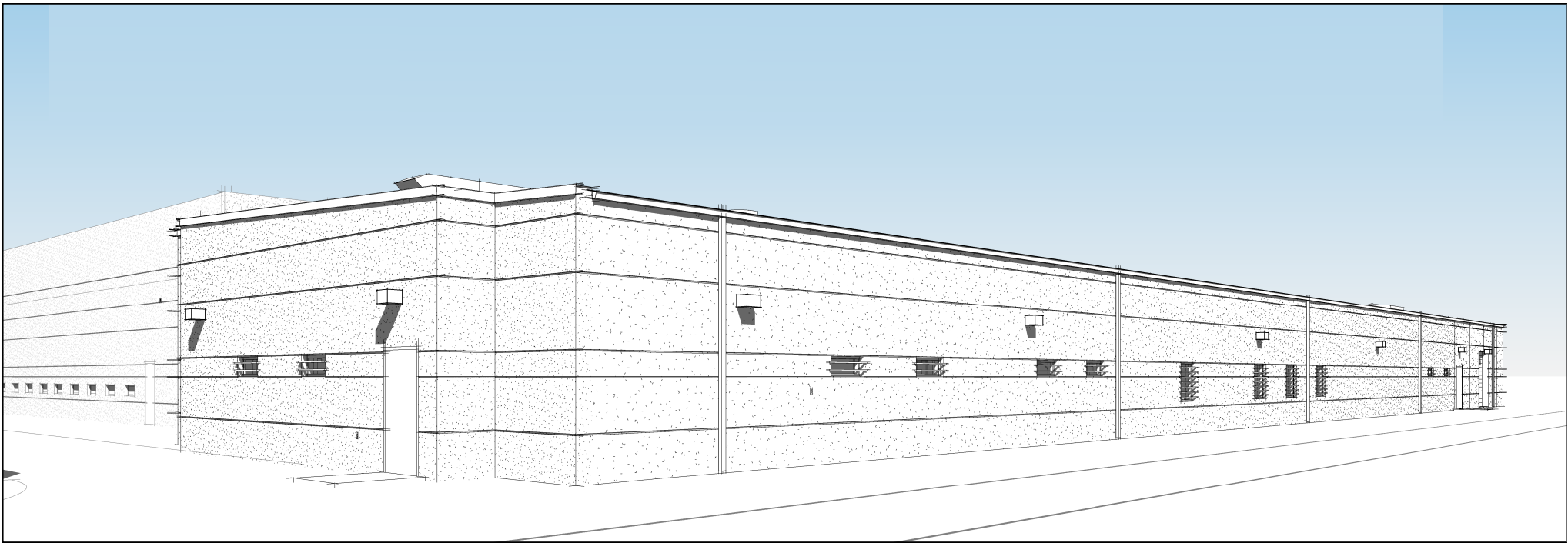


**Jameson Prison Annex
Medical Expansion and Behavioral Health Remodel
South Dakota State Penitentiary
Sioux Falls, SD**



- May 2019 to January 2020 Design
- January 2020 GMP from Henry Carlson Construction
- January 2020 to February 2020 Bid-out by CMR
- February 2020 – March 2020 Procurement of Materials and Coordination
- April 2020 – Construction begins
- November 2020 – New Construction Complete
- December 2020 – Owner moves into new space
- January 2021 – March 2021 Remodeling of vacated space for new use.
- March 2021 – Remodel Phase Complete

